

## Daily Features and Special Attractions

(Continued from Page F27)

**FARM ANIMAL LEARNING CENTER** - This exhibit of small farm animals gives young people a chance to learn about animals, how they are cared for and their contributions to agriculture. Your children will love this exhibit on the Upper Concourse of the Large Arena, sponsored by Students for the Responsible Use of Animals from Penn State University and Delaware Valley College.

**FFA CONVENTION** - One thousand FFA members will converge on the Farm Show Complex for their Mid-Winter Convention in the Large Arena on Monday at 4 p.m. More than 200 vo-ag students will be presented with Keystone Degrees for their involvement in supervised agricultural projects throughout the past year. A few selected members will also receive coveted State Star Awards for excellence in their fields.

**FARM SHOW SCHOLARSHIP FOUNDATION** - The Pennsylvania Farm Show Scholarship Foundation provides an avenue for granting scholarships to deserving agricultural students. Funding for the Scholarship Foundation is derived from donations, membership fees and a small percentage from the Junior Livestock Sale. Any youngster who exhibited a market steer, lamb or hog at the Farm Show since 1993 is eligible to apply for 16 scholarships. This year's scholarships will be awarded at 9 a.m. on January 12 in the Small Arena, just prior to the start of the Junior Livestock Sale.

**FASHION SHOW** - Farm Show Fashions With a Flair offers exhibitors in selected clothing classes an opportunity to model their creations in the Family Living Area. Entries will be judged by a panel of fashion experts and \$300 in monetary awards will be divided among first and second place winners. The show is limited to approximately 35 entries entered by December 1. The show will be held about 5 p.m., following the Cocoa Cake and Cookie Contest.

**FOLK DANCE FESTIVAL** - The Folk Dance Festival, scheduled for 7 p.m. on Monday night in the

Large Arena, is always a spectacular sight. Sixty sets of attractively costumed dancers vie for monetary prizes in three age divisions. Members of several local clubs will demonstrate the latest in round and square dance techniques during the evening.

**FOOD BANK COLLECTION** - A food bank collection is being conducted for the first time at the 1995 Farm Show on behalf of the Pennsylvania Association of Regional Food Banks. Farm Show visitors are encouraged to bring a few non-perishable food products along for this worthwhile effort. Canned fruits, canned meats and canned fish are the most desirable items, and they can be deposited at five main entrances.

**FOOD COURT** - Pennsylvania commodity associations offer their specialties for sale in the East Building, dubbed the Farm Show Canteen this year to coincide with other World War II activities. From apples to zucchini, there's literally something for everyone in the Food Court, including apple dumplings and apple cider, baked potatoes and broccoli, cauliflower and catfish, chicken sandwiches and chicken soup, french fries and frozen yogurt, lamb stew and lots of sandwiches, mushrooms and milkshakes, potato donuts and pork barbecues, honey ice cream and maple syrup products, cinnamon rolls and shoo fly pies, fish and chips, fish sandwiches and smoked trout, and vegetable soup and vegetable salad.

**FOOD MARKET** - The Pennsylvania Food Market, on the upper level of the Northeast Building, will resemble a mini trade show when 14 companies come together to promote their food products. Some of Pennsylvania's finest snack foods, candy, spices, processed meats, condiments and beverages will be available for sales and sampling this year. We hope you are impressed with the diversity of Pennsylvania agribusinesses.

**FOOD PANTRY** - Through the cooperation of statewide agricultural organizations, the Pennsylvania Food Pantry in the West Lobby is a showcase of products produced and processed in Pennsylvania. Cooking

demonstrations will be conducted by culinary students several times each day featuring many of the products on display.

**4-H EXHIBITS** - Food and nutrition, clothing and textiles, crafts and child care, animal science and entomology, photography and woodworking, gardening and wildlife are all among the project categories that 4-H club members can submit for judging. The 4-H display area is located on the second floor of the Northeast Building.

**4-H HORSE DRILL TEAM** - Members of the Cumberland County 4-H Horse Drill Team will perform a precision riding program on Saturday afternoon between 4 p.m. and 5 p.m. in the Large Arena. Year after year, this group demonstrates riding maneuvers that are a popular part of the Farm Show entertainment card.

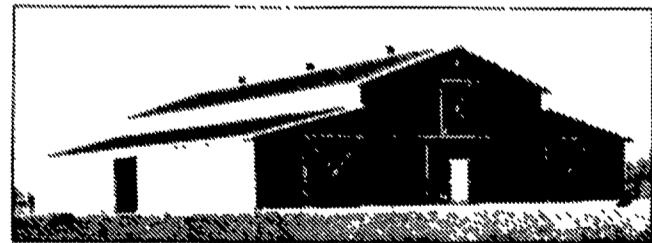
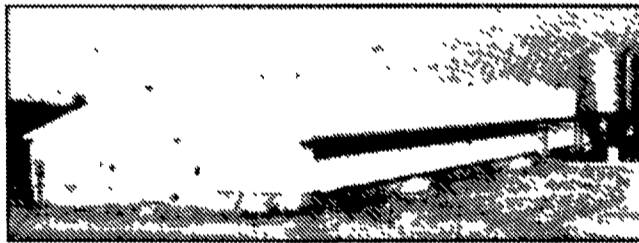
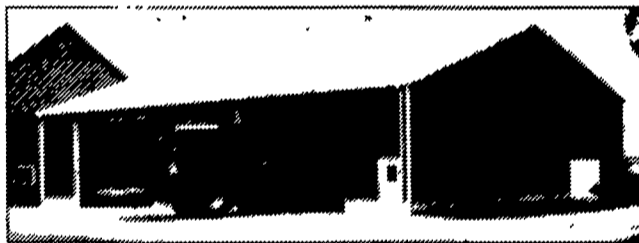
**HORSE SHOWS** - Horse shows and contests are always popular with Farm Show visitors and dominate the entertainment programs in the Large Arena. Competition takes place in Belgian, Percheron and Clydesdale classes, draft horse hitched classes, and horse and pony pulling contests. About 200 horses compete for Farm Show premiums throughout the week.

**HORSE AND PONY PULLING** - Sixty teams are likely to compete in the popular horse and pony pulling contests on Tuesday and Wednesday. These contests find several classes of horses and ponies pulling a weighted sled across the floor of the Large Arena, attempting to outdistance their competitors.

**HORTICULTURE CENTER** - You are sure to find inspiration for your own landscaping projects when you see what the professionals have done in the horticulture exhibits on the second floor of the Northeast Building. Along with some of the nursery dealers, you will see exhibits by Penn State University and Delaware Valley College.

**HOURS** - Farm Show hours are 8 a.m. to 9 p.m. on Saturday, Monday, Tuesday and Wednesday. Sunday's hours are 11 a.m. to 6 p.m. and Thursday's show hours are 8 a.m. to 4 p.m. The hours of the Main Building are (Turn to Page F30)

# Engineered For Life On The Farm.



Choose from a wide range of standard or custom Lester wood frame agricultural buildings. Each features value engineered Uni-Frame® construction. Top quality materials. The industry's leading warranty.

And the support of the nation's leading building company.

Reap the benefits of quality, affordable storage. Call your local Lester dealer or 1-800-826-4439 today.

**Stop By And Visit Us At  
The Pennsylvania Farm Show  
January 7-13 Booth #'s 650-651**

**LESTER**™  
LESTER BUILDING SYSTEMS  
A Division of Butler Manufacturing Company

**Contact The Lester  
Dealer Nearest You  
Today For A Quote  
Or More Information**

**PENNSYLVANIA**

Anville  
**H.R. WEAVER  
BUILDING  
SYSTEMS**  
(717) 838-3753

West Chester  
**DELAWARE  
VALLEY  
STRUCTURES,  
INC.**  
(610) 344-7242

Coalport  
**FOUR COUNTIES  
CONTRACTORS,  
INC.**  
(814) 672-5751

Lebanon  
**LEBANON  
BUILDING  
SYSTEMS, INC.**  
(717) 272-4449

Montoursville  
**COUNTRY  
CONSTRUCTION**  
(717) 368-1718

New Oxford  
**UMBAUGH  
BUILDINGS, INC.**  
1-800-222-9047

Winterford  
**ROBERT R.  
SMITH  
& SONS**  
(814) 825-5828

**MARYLAND**  
Reisterstown, MD  
**REYNOLDS &  
YELLOTT  
CO., INC.**  
(410) 833-1840

Street, MD  
**GOMPF CONST.  
CO.**  
(410) 692-5350

Taneytown, MD  
**RASCHE  
BROTHERS, INC.**  
(410) 756-4457

**NEW JERSEY**  
Mt. Holly, NJ  
**MATTSON  
ENTERPRISES,  
INC.**  
(609) 261-3600

**LESTER**™  
LESTER BUILDING SYSTEMS  
A Division of Butler Manufacturing Company