

SEE THESE UNITS ON DISPLAY AT THE PA FARM SHOW
In The J-Star Booths #174-179 and 203-204



NEW BELT FEEDERS & CONVEYORS



**Big Capacity Delivery...
 With All The Advantages Of
 Dependable, Efficient, Low Profile
 Direct Drive Design!**

That's what farmers really appreciate about the new Jamesway family of Direct XPress Feeders and Conveyors. All models feature a dependable and efficient heavy duty industrial drive, with enclosed oil bath and standard 1, 2 or 3 HP C-faced motors. Our direct drive design eliminates pulleys, jackshafts, sprockets, chains, V-belts and shields. The low profile motor and drive can be mounted on either side for added installation versatility.

- The Direct XPress family includes:
- DXF 1400 - Single or Divided Lot 14' - Wide Belt Feeder 180' Maximum Length
 - DXC 1400 - 14' - Wide Belt Conveyor 180' Maximum Length
 - DXC 1800 - 18' - Wide Belt Conveyor 180' Maximum Length
 - DXC 2400 - 24' - Wide Belt Conveyor 124' Maximum Length

"X" Sides Are Standard
 All Direct XPress System models feature heavy 16-gauge weather resistant galvanized steel sides in 2-1/2', 5' and 10' sections. We call them "X" sides because they are "X-tra" strong and will span 20' between supports. And they are built to last and will stay looking good "X-tra" long!

Do It Your Way!
 Match your feeding layout and requirements with reversible elevating conveyors, inclines and declines without sacrificing capacity, speed and uniform delivery. All inclines and declines are infinitely adjustable up to 30 degrees elevation for textured belt and up to 15 degrees elevation for smooth belt.

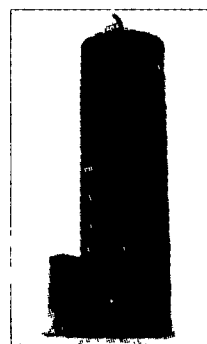
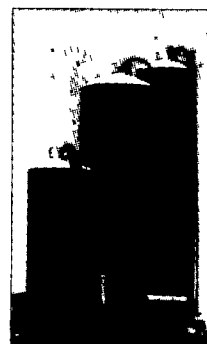
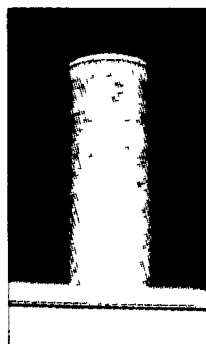
Tough 1/8" thick polyester belt with PVC covering and dependable stainless steel industrial splice is a year round performer and flexes in sub-zero weather. Choice of smooth or textured belt for conveyors in 14", 18" and 24" widths. Belt speed is 230 feet per minute.



**Big Jim[®]
 B.U.C.S.[™]**

**The Solution to Bottom
 Unloader Problems...from
 the Silo Unloader Expert**

Your Jamesway Dealer has loads of information — including an in-depth video — about Big Jim B.U.C.S., the Bottom Unloader Conversion System by Jamesway. See how you can get faster unloading, increased capacity, better quality feed and reduced maintenance in your steel, poured concrete or concrete stave silo. You can even tour a farm with a B.U.C.S. installation at work. So call your Jamesway Dealer now and get the expert advice you need!



VOLUMAXX

**MORE GUTS
 MORE GLORY**



Volumaxx[™] unloader — because you expect the best from the leader.

Bring your old Jamesway[®] ring-drive up-to-date with a Re-New[™] Kit. Ask your dealer for more details. He's the best in the business!

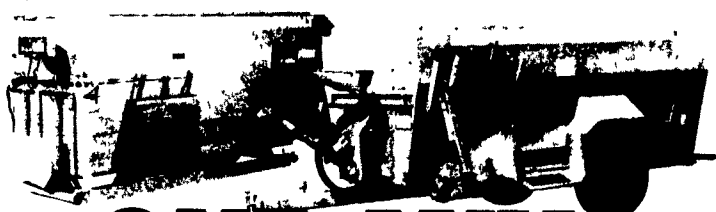
MORE
 Stainless Steel

MORE
 Protection

The new Volumaxx[™] unloader impeller features reversible, adjustable stainless steel paddles, a beveled-up 3/16" stainless steel impeller band in the critical wear areas and a stainless steel auger shroud cover. More stainless steel for longer wear and low maintenance!

The new Volumaxx unloader and Re-New Kit are covered by the exclusive Jamesway three-year warranty. We call it C.A.P. (Customer Assurance Protection). That's peace of mind.

**YOU JUST
 CAN'T MATCH**



OUR MIX

TMR Ruffage Master

These new Oswalt[®] four auger Model 200/250 mixers are designed to process and mix all feeds, including baled hay, into a fully-blended TMR better than anyone! The aggressive, notched, 20" diameter, full-pitch, four auger mixing pattern, dual shear shelf design



and exclusive, self-lubricating Tuff-Glide[®] liners help feed materials flow more freely, reducing horsepower requirements and virtually eliminating material hang-ups and dead spots. The end result: A better quality of mix! See your Oswalt Dealer today!



LAPP'S BARN EQUIPMENT

2005 Old Philadelphia Pike, Gap, PA 17527
 Phone: 717-443-6134

