

197 FFA'ers To Receive Keystone Degree At Farm Show

(Continued from Page F10)

tural experience is a pleasure horse enterprise. She has served on the following committees: window exhibit, citrus, recreation, and Food for America. She is the current chapter president and was vice president in 1993 and secretary in 1992. In addition, she has done well in dairy foods, dairy judging, and pleasure horse.

Jessica plans to attend a four-year college and major in agricultural education.

David A. Walters

David A. Walters, son of Larry and Thelma Walters, Tyrone, Blair County, is a four-year member of the Bellwood-Antis FFA Chapter at Bellwood-Antis High School.



David has work experience in home improvement, as well as on-farm and off-farm work experience and wildlife conservation and skills and tasks. He has held offices of president, treasurer, and sentinel, and has received the Star Greenhand Award and the scholarship award. He looks at the possibility of college or trade school in the future.

Jessica Webber

Jessica Webber, 17, daughter of Bruce and Jeana Webber, Richland, Berks County, is a four-year member of the Conrad Weiser chapter at Conrad Weiser High School. She has served on the elm tree committee, the Wernersville Hospital committee, the soybean embryo project, and was the chair of the recreation committee.



Jessica has served as reporter, vice president, and secretary of her chapter and sang in state chorus.

Lew Weidner

Lew Weidner, 17, son of Daniel and Arlett Weidner, Coudersport, Potter County, is a four-year member of the Spud Growers FFA Chapter at Coudersport High School.

Lew has served on the banquet, fruit, and bird seed sales committees and has received chapter awards in beef production and diversified livestock production. He plans for four years in the Army in the future.

Kristy Sue Wilson

Kristy Sue Wilson, 17, daughter of Don and Mary Wilson, Delta, York County, is a four-year member of the Kennard-Dale FFA Chapter at Kennard-Dale High School.



Kristy has had SAE and dairy heifer projects and was chair of the citrus committee in 1994. She has also served on the leadership committee.

In 1994 she was the county reporter and has served as chapter secretary and treasurer. She has received the Greenhand, Chapter, and County White Rose degrees. As secretary for the parliamentary procedure team, the team placed first in the county, area, and regional contests in 1993.

Chad E. Wolf

Chad E. Wolf, 18, son of Larry and Linda Wolf, Idaville, Adams County, is a four-year member of the Bermudian FFA Chapter at Bermudian Springs High School.



In 1992-1993,

Chad took part in the poultry production course and raised 45 turkeys. In 1994, he gained work experience by working on the Jo-Bo Holstein Farm. He is the chapter vice president and received the Star Agribusiness Award. He served as an adviser in 1994 and received both a gold and a silver in poultry production. He was the chapter reporter in 1992-1993.

Chad wants to continue his job on John and Bonnie Hess's dairy farm in Gettysburg and would like to own his own farm in the future.

Shawn Wolf

Shawn Wolf, 17, the son of Don and Connie Wolff, Albion, Crawford County, is a four-year member of the Conneaut Valley chapter at Conneaut Valley High School.

Shawn is active in many FFA activities and has served as chapter president for two years. He raises swine for his SAE projects

and recently started making maple syrup. Shawn plans to attend college to become a game warden after graduation.

Sarah Wolford

Sarah Wolford, 18, daughter of Marlin and Lisa Field, Fredericksburg, Lebanon County, is a four-year member of the Northern Lebanon FFA Chapter of the Northern Lebanon High School.

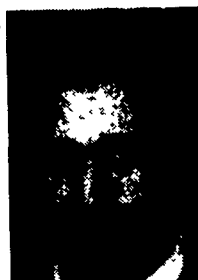


Sarah's activities have included pleasure horse for four years, the banquet committee, and the dance committee, the citrus, bologna, cider and sub sales committees. She has been involved in the work study co-op, horse judging, and has attended the national convention in 1994.

Credits include student adviser, horse production, foundation medals, Greenhand and Chapter degrees, project book award, and gold, silver, and bronze medals at state for project books. In the future, she plans to attend a four-year college and major in a field related to agriculture.

Loren Burns Wright

Loren Burns Wright, 17, son of Jim and Donna Wright, Millers-town, Perry County is a six-year member of the Greenwood FFA Chapter at Greenwood High Schools.



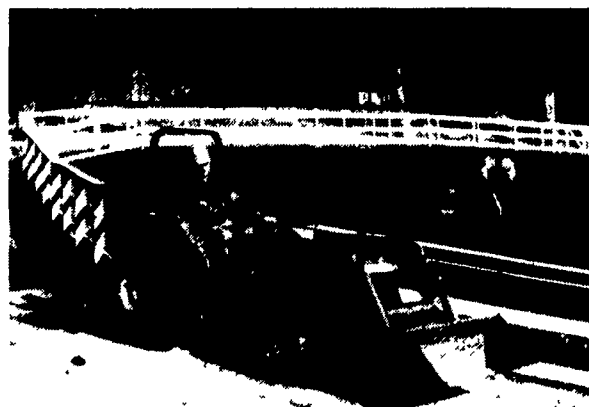
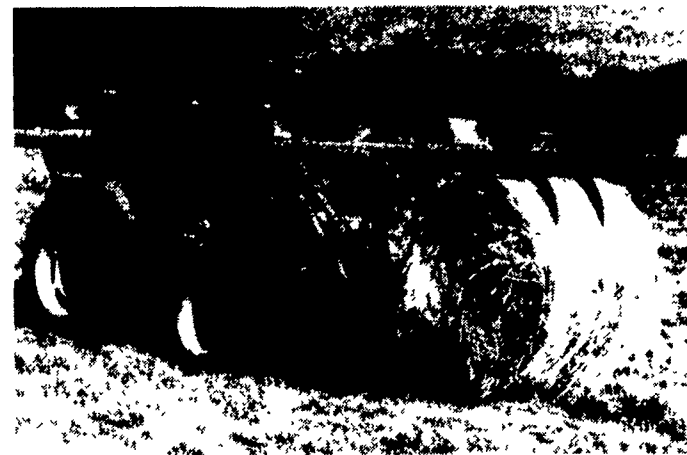
Loren has worked in a greenhouse project and served on

(Turn to Page F14)

KUBOTA'S POWER LINE-UP

From our 10 HP lawn and garden tractor to our 91 PTO HP Turbo-Charged farm tractors, Kubota has the right tractor to handle all your needs. Our line of tractors are powerful, dependable, fuel efficient and all are built by Kubota to exacting quality standards.

When you need power and demand results from a quality tractor, look at Kubota's line-up of performance tractors.



KUBOTA LAWN & GARDEN TRACTORS	
MODEL	HORSEPOWER
T-Series	13.5-17
G-Series	16-21
KUBOTA B & L- SERIES TRACTORS	
MODEL	PTO HORSEPOWER
B50-Series	13-20
B7100	13
B20	13.5
L1 Series	20.5-33
L3 Series	38-49
KUBOTA M-SERIES	
MODEL	PTO HORSEPOWER
M30 Series	42-76
M50 Series	49.5-85
M80 Series	70-91

Kubota Tractor Corporation markets a full line of tractors through a nationwide network of over 1,000 dealers.



See Your Local Kubota Dealer

PENNSYLVANIA Avondale THOMAS POWER EQUIP., INC. 215-268-2181	Chambersburg STOUFFER BROS., INC. 717-263-8424 Cochranville STOLTZFUS FARM SERVICE, INC. 215-593-2407 Elizabethtown MESSICK FARM EQUIP. INC. 717-367-1319	Jersey Shore THOMAS L. DUNLAP 717-398-1391 Honesdale MARSHALL MACHINERY, INC. 717-729-7117 Lebanon & Lancaster KELLER BROS. TRACTOR CO. 717-949-2000 717-589-2500	Mifflinburg MIFFLINBURG FARM SUPPLY, INC. 717-966-3114 New Berlinville ERB & HENRY EQUIPMENT, INC. 215-367-2169 Reading NICARRY EQUIPMENT, INC. 215-926-2441	West Chester WENNER FORD TRACTOR, INC. 215-399-9615 York YORK TRACTOR, INC. 717-764-1094	MARYLAND Hagerstown ARNETT'S GARAGE 301-733-0515 Flemington & Clinton PONIATOWSKI BROS. EQUIP. CO. INC. 908-735-2149	Hainesport MATERIAL HANDLING SYSTEMS 609-267-6100 DELAWARE Newark NEWARK KUBOTA, INC. 1-800-955-3031
---	--	---	---	---	---	---