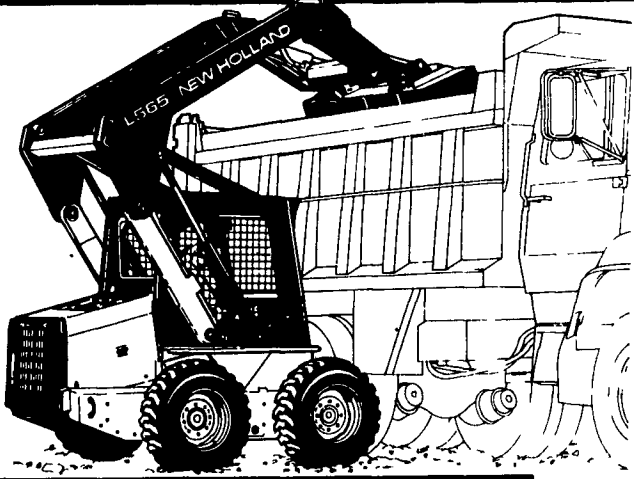


# STEADY PERFORMER



## TOUGH ENOUGH

New Holland Super Boom™ skid-steer loaders are tough enough to handle any job...time after time.

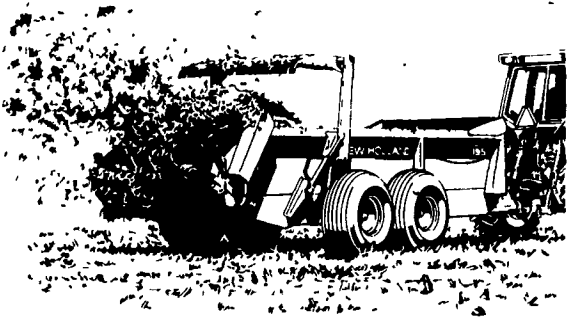
The all-new Super Boom features:

- A stronger boom and frame
  - A new electrical system
  - Improved hydraulics
  - A new attachment system
  - Operating loads up to 2,050 pounds
- Stop in and see what makes the all-new Super Boom so tough.



NEW HOLLAND

# CAPACITY KING



## THE BIGGEST

The New Holland Model 195 box spreader is up to your biggest spreading job.

- **Capacity.** The "195" takes on 410 bushels (440 cu. ft.) without flinching.
- **Strong construction.** Corrosion-resistant steels last and last. And an HDPE floor means smooth unloading, even in cold weather.
- **Bonded Protection warranty.** If the polyethylene floor fails or the sides rust, we'll replace them free for 12 years
- **Fast clean out...**even with this big-capacity strong box.
- **Large tandem oscillating wheels.** Allow faster ground speeds in rough terrain, with less ground compaction.



NEW HOLLAND

Check out our biggest New Holland spreader from the biggest name in spreaders.

### QUALITY USED EQUIPMENT FOR SALE

- |                            |                                     |
|----------------------------|-------------------------------------|
| • JD 950 Tractor           | • IH 700 Plow Auto Reset Semi-Mount |
| • David Brown 885 Tractor  | • NH 190 Spreader (Like New)        |
| • Deutz Allis 6260 Tractor | • NH 256 Baler                      |
| • NH 355 Grinder Mixer     | • NH 276 Baler                      |
| • NH 790 Forage Harvester  | • NH 315 Baler w/70 Thrower         |
| • NH 8 Forage Wagon        | • NH 311 Baler w/75 Ejector         |
| • NH 411 Discbine          | • IH 430 Baler                      |
| • NH 38 Flail Chopper      | • NH 855 Round Baler                |
| • NH 162 Hay Tedder        |                                     |
| • (3) NH 489 Haybins       |                                     |

### BHM FARM & LAWN EQUIPMENT

SALES PARTS SERVICE  
Route 634 - 2 Miles North of Annapolis, PA  
Telephone 717-867-2211

### HYMAN EQUIPMENT

BALTIMORE, MD.

(410) 337-3570

Call Alan Hyman anytime



20,000 Lb. Hyster Gas 8' Fork, Very Good Cond. \$17,500



7,000 Lb. Clark 4WD, Gas \$7,000

**-MECHANICS SPECIALS- MANY OTHER FORKLIFTS IN YARD - CALL FOR SPECS**



8,000 lb. Pneumatic Forklift, LPG, 6' Forks, Side Shift \$3,500

2,000 lb. Electric Walk Behind Forklifts 5 Left \$1,500 to \$2,000 Ea. Electric Pallet Jacks \$500 to \$800 Ea.

★ SEE BELOW DESCRIPTION

### FORKLIFTS

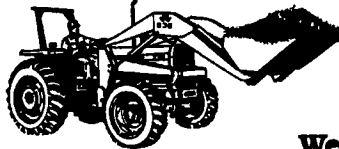
- |   |   |
|---|---|
| ★12,000 lb. 4WD forklift, (O) time 453 Detroit Diesel.....\$15,000                              | 4,000 lb. Baker, towable turf style lift, needs little work.....\$3,000 |
| 15,000 lb. Trojan articulating, 7' forks, Cummins diesel, very good cond.....\$15,000           | 10,000 lb. Hyster Karry Krane, runs good.....\$6,000                    |
| 5,000 lb. Hyster, side shift solid tire, LPG, 1987, 3-stage, excel. cond., low hrs.....\$10,000 | 5,000 Lb. CAT, solid tire, LPG, S/S, very good..\$5,000                 |
| 4,000 lb. Towmotor, solid tire, LPG, P/S, light rattle & forks won't come down.....\$1,200      | 6,000 lb. Clark pneumatic, runs great (smokes). \$4,000                 |
| 2,500 Lb. Hyster 3 Wheel Pneumatic Gas, Auto, P/S, Very Good Cond.....\$3,000                   | 5,000 Lb. Hyster solid tires LPG, 3 stage very good..... \$4,500        |
| 3,000 Lb. A/C LPG Runs.....\$800  | 4,000 Lb. Baker electric, new battery.....\$4,000                       |
|   | 3,000 Lb. Raymond Reach Truck, Good Cond..\$3,000                       |
|   | 5,000 Lb. Clark, Electric w/charger, very good condition.....\$3,000    |
|   | 10,000 Lb. Dual pneumatic, old but runs.....\$1,000                     |

## IMAGINE!

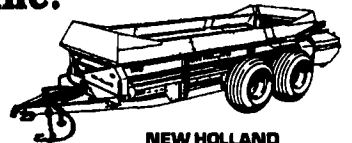
### This Much Quality at One Location

#### Meyers Implements, Inc.

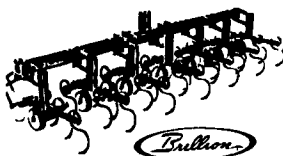
400 North Antrim Way  
Greencastle, PA 17225  
(717) 597-2176



MASSEY-FERGUSON



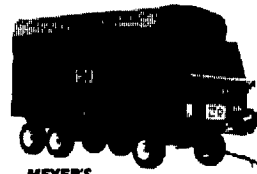
NEW HOLLAND



Bullhorn



CLAAS



MEYERS



NEW IDEA

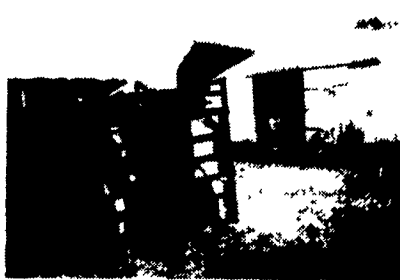
We at Meyers Implements, Inc. have strived for many years to bring our customers the best products available. While one eye was fixed on the goal of providing quality products, the second was looking out for affordability. As a result, we have assembled the highest quality products available on the market and because of our dual commitment we can offer them at the most competitive prices.

As an extension of our commitment, our fully-stocked parts department and award-winning service department stand ready to serve. So before you are disappointed by buying somewhere else, give us a call.

Satisfaction is what we sell!

**FARMLUND INC.** Introduces A Quality Built, Reasonably Priced New Product for 1995

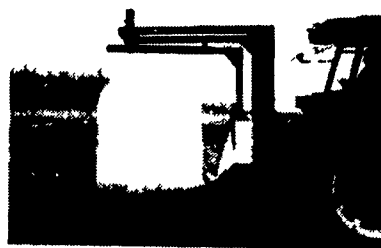
## The Farmlund Hoof Trimming Table Built for Cow Comfort



- Easy Loading & Set Up.
- Wide Belts & Hydraulic Lift for Cow Comfort.
- Comfort for All Size Animals
- STRAIGHT THROUGH COW TRAFFIC.
- TRAILER TYPE & STATIONARY UNITS.

### Farm Lund Round Bale Wrappers Excellent for Dry Hay & Hi-Moisture

Cut the plastic wrap from the tractor seat and lower the bale to the ground. "Two machines in one." This hydraulic bale wrapper bales and can be used to move bales to barn or feed lot. New for 1995 Trail Model Wrappers - Call for Price -



Best Made Best Price Made in USA

See Us At The Pa State Farm Show Booth 571-573

3164 Oregon Pike, Leola, PA 17540 • Lancaster County 717-656-7499 Call Collect • Dealerships Available

To the 100's of farmers who purchased our units in 1994 - We sincerely Thank you and look forward to serving you in 1995.