

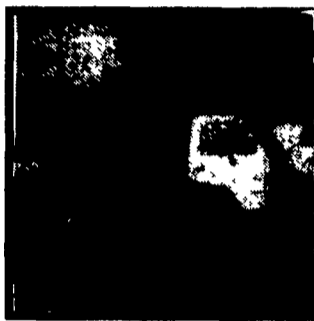
# TRUCKS

The Best Selection of New & Used Trucks Is  
At Pennsylvania's Leading Truck Source

## NEW HOLLAND FORD



**NEW 1994 FORD  
F-150  
PICKUP**  
6 cyl, 5 speed transmission, power steering, power brakes, AM/FM stereo cassette, interval wipers, cloth seats, #F2657  
**\$219 Per Month**  
**NOW ONLY \$12,599**



**NEW 1994 ISUZU  
NPR 109"  
WHEEL BASE**  
4 cyl, 5 speed transmission, power steering & brakes, stereo & cassette, tilt steering wheel, 135 horsepower, 11,050 GVW, & More! #3145  
Original Retail List. \$23,905 **SAVE \$5707**  
**NOW ONLY \$18,198**



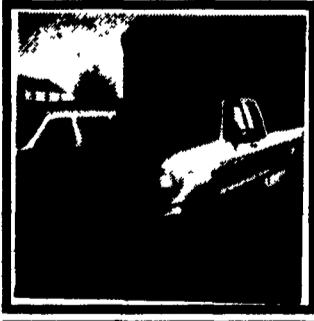
**NEW 1995 FORD  
E-150  
CLUB WAGON**  
Loaded 8 passenger people mover! V8, 5.8L, auto/od trans, power steering & brakes, air conditioning, AM/FM stereo & cassette, cruise control, tilt steering wheel, much more! #F4318  
**SAVE OVER \$3275**  
**NOW ONLY \$19,698**



**1993 FORD  
E-150 CARGO  
VAN**  
4.9L, 6 cyl, automatic transmission, power steering & brakes, air conditioning, AM/FM stereo, only 38,000 miles, #P8567  
**NOW ONLY \$13,987**



**1981 FORD  
SUPER DUTY  
CAB & CHASSIS**  
7.3L diesel engine, 5 speed transmission, power steering & power brakes, AM/FM, 161" wheel base, only 22,000 miles, #F4327A  
**NOW ONLY \$16,983**



**1993 FORD  
F-150 SUPER  
CAB 4x4**  
5.0L, V8, 5 speed, air cond, power steering & brakes, power windows & locks, tilt wheel, cruise, stereo cass, XLT trim, captain's chairs, 2-tone, only 21,000 miles, #F4423A  
**NOW ONLY \$21,988**

Prices include repairs if applicable. 94 F-150 4x2 payment is based on 9.8% apr for 60 months with 20% cash or trade equity tax and tags additional

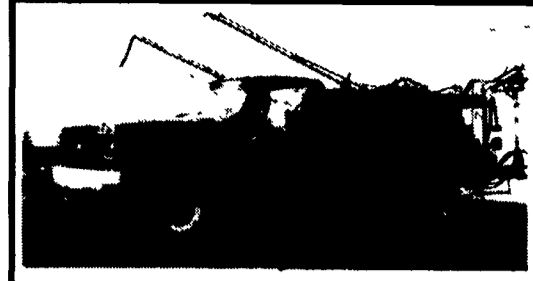
## New Holland FORD & ISUZU TRUCKS

Route 23, New Holland PA  
717-354-4901 • 800-642-8605

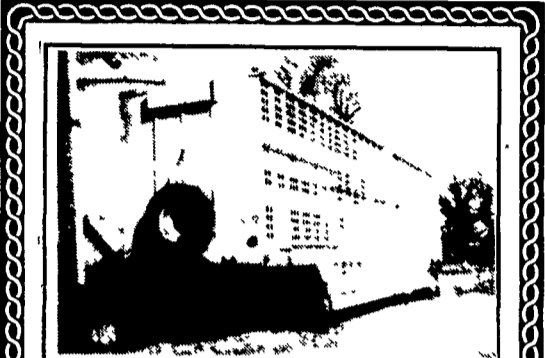


**1986 F350 Dolly, Diesel, A.T., P.S., P.B.,  
AM/FM radio, 93,000 miles \$6,995**

**COUNTRYSIDE AUTO SALES  
(717)664-2170 OFFICE  
(717)865-3488 HOME**



**1979 Chevy**  
350 Eng., 4x4, 400 Gal. S.S. Tank, 40' Hydraulic Booms, Foam Marker, John Blue Spray Pump, 49,000 Mi., A/C, P.S.  
**Price \$7,750**  
**717-687-6535**



**1976 Merrit 48' Double Deck Pot**  
Extra Nice for Year \$8,000  
Winchester, VA.  
Call - (703) 662-0057 - Day  
(703) 888-3706 - Night

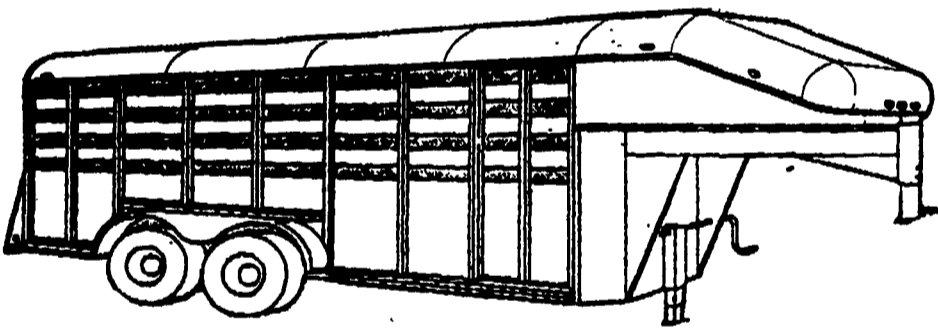


**1973 F600 Ford**  
4 Speed 2 Speed Axle Dump With Hog And Grain Body  
Adams Co., PA  
**(717) 528-4223**

**SEE HOSTETTLERS AT THE PA FARM SHOW**  
at both of our locations

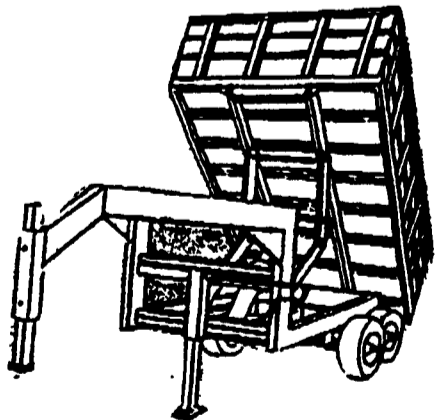
*As always we will have a sample of our truck equipment and trailers on display: Plus; Some New Things on Display*

**Introducing the New Moritz Gooseneck with the Aerodynamic Nose**



**See it at our Display in the Large Exhibit Area**

Also check Out our Complete Line of Dump Trailers. From our Small 5' x 8' Single Axle Dump thru our 12' Heavy Duty Contractor Dump Trailer to a 15000# Gooseneck Grain Trailer



**Don't Forget to Drop By our Second Display in the Horse Barn.**

**We have a Complete Line of Both Aluminum and Steel Livestock Available for your Trailering Needs.**

**See You at the Farm Show**



**Hostetler Truck Bodies & Trailers**  
Rt. 322 Milroy, PA 17063  
**717-667-3921**