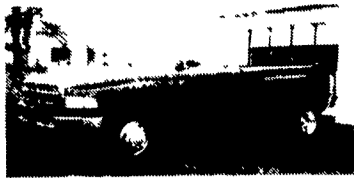


INTERNATIONAL 6x6 BRIDGE TRANSPORTING STAKE BODY TRUCKS

Front Winch, PS, Air Brake, 1400/20 Tires, 21 ft. Bed with removeable steel racks. Continental 6 cyl. engine. LIKE NEW 600-2,500 Miles. Excellent for off road heavy duty cargo transporting with their all wheel drive and ability to climb a maximum grade of 70 degrees. Double Frame. A must for every farmer.

\$2,500 to \$10,500
(814) 834-1018 St. Marys, Pa.



1994 Dodge RAM 3500 Laramie S.L.T., Duallie, Cummins Turbo Diesel, Auto, PS, PB, PW, PDL, Cruise, Tilt, Air, Factory Towing Package, 410 Ratio with Overdrive, Red & Black, Less Than 500 Miles with 7-Year 70,000 Mile Engine Warranty



1993 Ford XLT F250, 4x4, Super Cab, 351 EFI, Auto, PS, PB, PW, PDL, Cruise, Tilt, Air, AM-FM Cass., 8800 GVW, Blue & Silver, 17,000 Miles with Bal. of Factory Warranty, Like New

A&J Auto Sales

798 E. Main St. Rt. 322 East
Ephrata, PA 17522

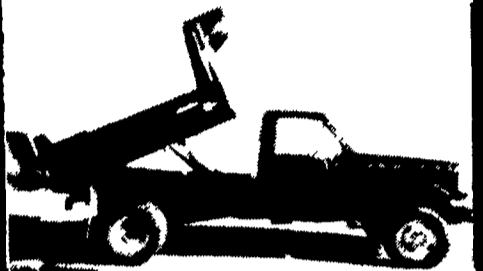
717-733-2873



1989 F350 4 Door Stakebody, 12' bed, Dual Wheels, AT, 351 Engine, Dual Tanks, 95,000 miles, Good Cond.
\$9,900

(717) 385-0401 8:00-3:30 Weekdays
(717) 385-3385 Evening & Weekends

DIESEL



(4) 1995 F-350 4X4 THIELE 8' E-LINE CHORBOY DUMPTRUCKS
all with Ford's 7.3L Powerstroke turbo diesel, 5-speed transmission, 2-3 yd. capacity, 11,000 GVW, (3) more on the way, (2) will also have a Western unimount snow plow
CALL TODAY!

DIESEL



(6) 1995 F-450 SUPER DUTY THIELE 8' AND 10' E-LINE CHORBOY DUMPTRUCKS
all with Ford's 7.3L Power Stroke turbo diesel, 5-speed transmission, 3-4 yd. capacity, 15,000 GVW
(2) IN STOCK, 4 COMING

DIESEL



1995 E-350 AEROCELL 16' CUBE VAN
7.3L Power Stroke Turbo Diesel, automatic overdrive with air conditioning
COMING IN SOON!

351



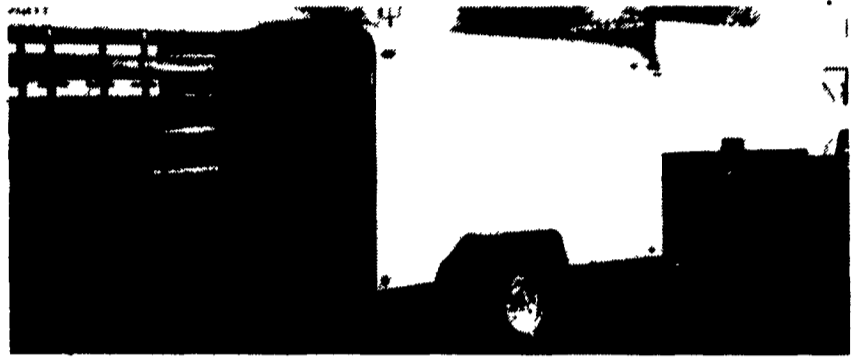
1995 E-350 AEROCELL 14' CUBE VAN
351, auto overdrive with air conditioning
**IN STOCK
READY FOR BUSINESS!!**

Ford
KELLER BROS.

RD 7 Box 305 Lebanon PA 17032
717-949-2000
300-309-FORD



Enclosed Utility Trailer



ECONOLITE STEEL FLATBEDS

TWO HORSE THOROUGHbred WITH DRESSING ROOM \$5995

4161 Oregon Pike
Ephrata, PA 17522



STAR Chevrolet • Oldsmobile • Geo

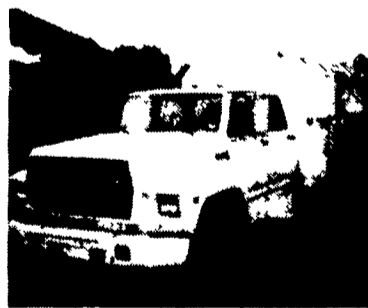
627-1220 or 859-7700

AT THE BROWNSTOWN EXIT OF RT. 222

Huntingdon Equipment

Rentals Available **GOOD USED EQUIPMENT**

Huntingdon Valley, PA • 215-672-9667 • 1-800-543-3833 • Eddie



1985 F-600 8.2 Diesel, Auto, 5 Man Cab, Utility With Rollup Door On Rear, Clean, Low Mileage, 1 of 3.



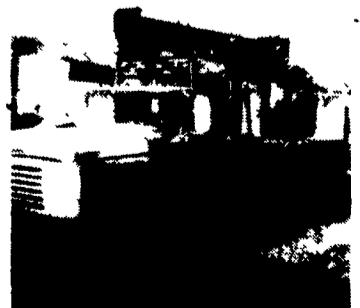
1970 Ford 800 V8 5 Speed with Aux. Trans, 39,000 GVW, VAC Brakes 13'4" Fran Fleet Maintained, 73,000 Miles.



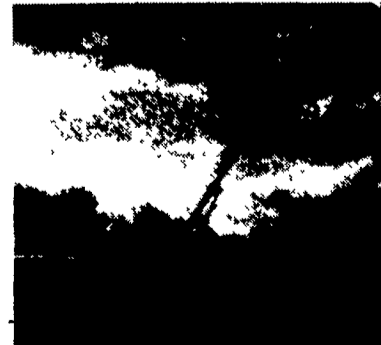
International Presser Digger This Unit Is Ready To Work, Winter Sale Price \$6,500



Holan 70' Double Bucket 75' working height mounted on 1981 Western Standard, 6x6 Flatbed, CAT 3208, Auto.



Need a Lift? We Have A Large Selection Of Boom Trucks Up To 14,000 lbs. Cap. Some With Post Diggers.



Bucket Trucks 28' to 65' Gas and Diesel. Call For Details.

DIGGER DERRICKS/AERIAL BUCKETS/UTILITY EQUIPMENT