

'86 Chevy, hyd. lift gate, \$2550; '83 Regal, \$500. 302/653-5539.

'87 GMC 2500 Sierra Classic, 9 passenger suburban, 454 FI, auto, PB, PS, air, AM-FM cassette, brown & tan, 49,000 miles, 1 owner, excellent condition, \$9,600. 717-733-2873

'89 GMC SL 2500, HD, 1/2 ton, 350 auto, PS, PB, AM-FM, 8,600 GVW, 53,000 miles, 1 owner, \$8,975. 717-733-2873

'90 Dodge LE 250, 1/2 ton, 318 EFI, auto, PB, PS, PW, PDL, cruise, tilt, air, AM-FM cassette, 7,400 GVW, 2 tone brown, 1 owner, excellent condition, \$9,600. 717-733-2873

'91 Ford Custom F250 1/2 ton, 302 EFI, 5 spd., PS, PB, AM-FM cassette, dual tanks, 6,600 GVW, 32,000 miles, red, excellent condition, \$9,900. 717-733-2873

'91 Ford F150 Super Cab, 300 EFI, auto, PS, PB, air, AM-FM, dual tanks, 6,250 GVW, 37,000 miles, dark blue, \$11,900. 717-733-2873

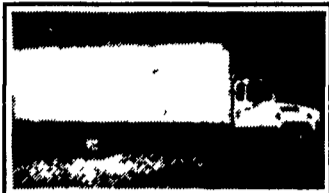
'91 GMC Rally STX 8 passenger, 350 FI, auto, PB, PS, PW, PDL, cruise, tilt, dual air, AM-FM, 39,000 miles, new radials, excellent condition, \$13,995. 717-733-2873

'92 Cheyenne 2500, 4x2, 6.5 turbo diesel, 5-spd., 35K, white, 1 owner, 100K warranty, \$14,900. 301/824-4812.

MARTIN'S USED TRUCKS & EQUIPMENT INC.

560 Lampeter Rd., Lancaster, Pa. 17602
(717) 392-6266 (717) 299-6200

Ask For ROB MARTIN JR.



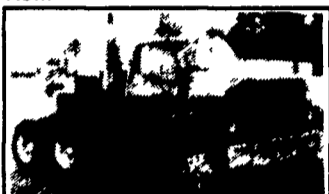
1989 CS 200 MACK Mid-Liner - 25,000 GVW (No CDL) Intercooled Turbo motor-5 spd., P/S, A/C, Pa Inspected-24 Ft. Van body-Like New.



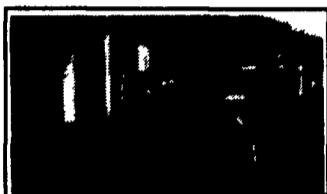
1987 Ford F350 - 351 motor, Auto, P/S, 76,000 Miles with READING Utility Body - Ex. Cond;



1982 MACK F600 - 300 HP-5 spd. - P/S-A/C-air ride suspension sliding fifth wheel. No rust - truck in Exc shape \$5,800; also (2) S/S - 2 comp 5800 gal. Milk trailers \$2500 & \$6500.



1983 GMC Brigadier Truck Tractor- 238 Detroit-10 spd-11R/22.5 high tread, differential lock, 111,000 mi. on truck, inspected-very clean truck



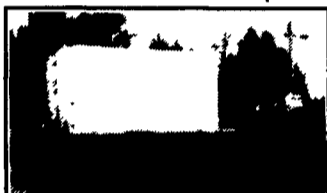
1984 GMC Brigadier Truck Tractor - 240 Cummins-7 spd-176,000 mi. in very good cond (would make a nice dump truck)



1983 MACK - R688ST- 350 HP motor, 15 spd Fuller, 11R22.5 high tread - P/S-air nde cab-sliding fifth wheel, low mileage, good looking truck, good for hauling heavy equipment



1977 IH 1950 - 466-5+2-P/S-A/B - 35000 GVW-good for a 20 to 22 ft. body \$4000.00



Truck Body's Refrigerated & Dry Vans - 10 ft. to 42 ft., Good for storage or over the road-Free delivery within 10 miles: \$250 end up

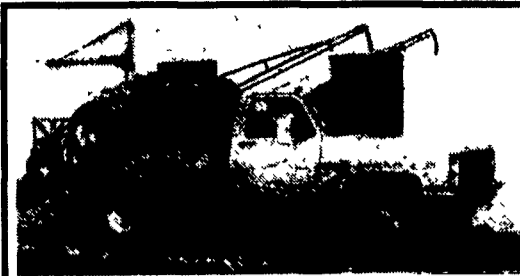


1973 F350 Ford Utility Truck - 300-6 cylinder-4 spd truck is inspected and in nice shape \$1850.00

E-TOWN DODGE

1995 Dodge Cab & Chassis 4x4
Also, 1/2, 3/4 & 1 ton 4x4.
Pickup Trucks in Stock
(25) Dakota's in Stock
1994 Ford F-150 4x4, Super Cab, 7,000 Mile

ASK FOR MILTON HESS
Certified Truck Specialist
717-367-6644
717-653-6667
Elizabethtown, PA



1984 Chevy
350 Eng., 4x4, 550 Gal. S.S. Tank, 40' Hydraulic Booms, Foam Marker, Wash Out Tank, Creek Fill Pump, Single or Dual Wheels, Mileage-55,000 mi
Price \$13,750
717-687-6535

(800) 533-3837

YOUR DIRECT LINE TO GENUINE GM PARTS

When you call the number listed above you'll reach our wholesale parts specialists, who can help you keep your GM repair work moving quickly. Ask About:

- Specializing in GM Medium Duty Trucks, Current and Obsolete.
- \$500,000 Parts Inventory
- Parts Locator For Those Hard To Find Items
- We Ship Anywhere. Local Delivery Available.
- Experienced, Knowledgeable Personnel.

LEFEVER BROS.
DILLSBURG

(717) 432-9697

Quality Dealer Since 1921

406 U.S. Route 15 • Dillsburg, PA 17019



Mr. Goodwrench



1995 Marmon SB57S

Cat 3406E @ 375 h.p., RTLO 14610B, Eaton Axles, 12,000' F/A, 40,000' R/A, 172" W/Base, Neway Air Susp @ 40,000', Holland 18" A/Slide, Dual 100 Gal. Alum Tanks, 11R22.5 Bridgestone Tires, 10 Alcoa Wheels, Heavy Duty Car Kit, Deluxe Interior, Tractor Weight 15,740', Stock #S087



1995 Freightliner FLD120SD

Cat 3406E @410 hp, RTX 14609B Jake Brake, Rockwell 12,000' F/A, 40,000' R/Axle, 188" W/Base. F/Liner Airliner Susp. @ 44,000#, Holland 24.5" A/Slide, Dual 70 Gal. Alum. Tanks, 275/80R24.5 Michelins, 10 Alcoa Alum. Wheels, Heavy Duty Cab Kit, Benchmark Interior, Stock # 663894



1995 Marmon Small Sleeper SB90S

Cat 3406E @ 435, RTLO 15610B, Eaton Axles 12,000' F/A, 40,000' R/Axle, Neway Air Beam @ 40,000', Holland 18" A/Slide, Dual Alum. Tanks 80 Gal., 285/75R24.5 Bridgestone Tires, Alum & Steel Wheels, Tractor Weight 16,820' Stock # S091



(2) FL70 Cab & Chassis

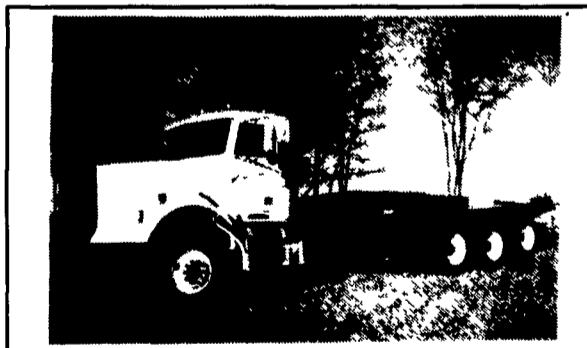
33,000 GVW
Cum 8.3 @ 300 hp,
Allison World Trans.,
Automatic 6-Speed, 11R 22.5
Michelin Tires; Freightliner
Air Susp. Wheelbase @ 234",
A/C, P/S,
Stock # 778707

26,000 GVW
Cum 5.9 @ 210 hp,
Fuller 6 Speed,
A/C, P/S,
255/80R22.5 Michelin
W/Base 252"
Stock # 638678



1988 Marmon 57P Dump

Cat 3406B @ 425 hp, RTO 14613 w/Jake, Eaton Axles, 20,000 F/A, 46,000' R/A w/Pusher, Hendrickson Air Suspension, 18.5 Speed Body w/ Air Gate, Stock # 00428



1995 Freightliner FLD120SD

Cat 3406E @ 435 h.p., RTLO-16713A, Rockwell Axles, 20,000 F/A, 46,000' RA, Rockwell Tag Axle with Neway Air Lift @ 20,000', Hendrickson RTE 460, 46,000' Rear Susp., Driver Controller Traction Diff., Both Rear Axles, Wheelbase 255", Dual 70 Gal. Alum. Tanks, Front Tires 315/80R225-20 Ply, Rear Drive 11R24.5, Tag Axle 80R22.5, Heavy Duty Cab Kit, Jake Brake, Stock # 720214

DUTCHMAN'S TRUCK SERVICE, INC

2355 N. READING ROAD, P.O. BOX 325 PA TURNPIKE EXIT 21
DENVER, PENNSYLVANIA 17517

"A GOOD DEALER IS A GOOD INVESTMENT"

PHONE 717-336-2867 PA 1-800-769-9887 FAX 717-336-2774

Ask For Phil Higgins or Blair Moyer

