

FOR SALE

2 Prelude sons, 1 year old, Dam; Leadman, will finish 2 year record over 26,000 lb. milk 3.4F 3.3P 76lb PRO. Gr.Dam VG 86 Cleitus with sons in A.1. 2-4 24,022 4.1F 3.3P 72 lbs PRO. Next 4 Dams all VG and up to 30,000 lb milk. "Prices Valiant Bess" cow family.

Please call

Ar-Joy Farm
Duane Hershey
(610) 593-5998

BUY DOWN & INJURED CATTLE

100 Mile Radius Of Harrisburg, Pa.
 Prompt Payment - Top Price Paid

JOHN JONES

717-249-7685 Res.
 717-432-4225 Shop

**FOR RENT
 FLOAT-A-COW**



With The Aqua-Cow Rise System Get that down cow up on her feet with warm water therapy. Warm water supplied, also a cow stretcher - a well designed cart to get down cows out of barns.

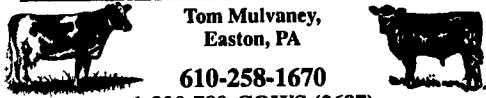
For More Information:
LEE-MAR FARM
 2724 Conestoga Creek Rd.,
 Morgantown, PA 19543
(610) 286-9052

8 CATTLE

Hargett Farms 14825 Conus Road Boyd, MD 20841	Pond View Farm 2531 Jolly Acres Road White Hall, MD 21161
William Gray 7200 Dustin Road Sharpsburg, MD 21782	Brad-Key Farms 11228 Keyville Road Lanctown, MD 21787
Wilt Mont Choice Farm 1633 Oakland Road Rosterstown, MD 21336	Deerfield Farm 875 Driver Road Marriottsville, MD 21104

TOP PRICES FOR ALL TYPES OF BEEF CATTLE
 CULL COWS, BULLS, STEERS, also Down or Crippled Cattle

MULVANEY LIVESTOCK SERVICES



Tom Mulvaney,
 Easton, PA

610-258-1670

1-800-789-COWS (2697)

Calls Taken 6 AM to 10 PM - 7 Days A Week

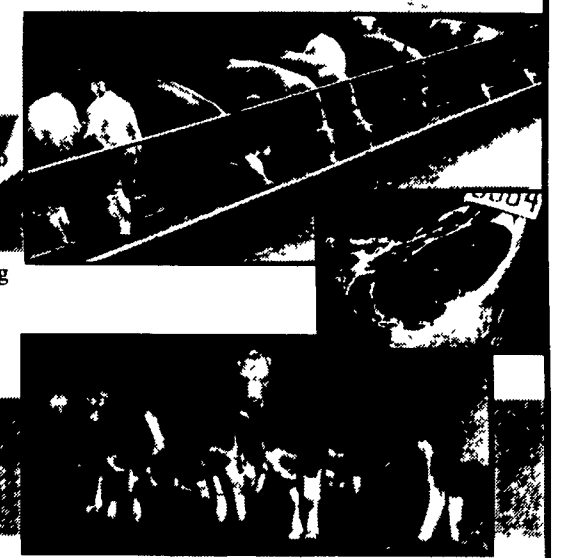
IN PA - Northampton, Lehigh, Berks,
 Lancaster and parts of Chester & Lebanon
 Counties

★ All Cattle Paid on Hanging Dressed Weight ★

**Who Saw You
 Can't Have It All**

It's ironic that the breeds which do not excel in the traits that are important to you say that no one breed can satisfy your

our products fast growing, efficient offspring that are ideal for Value-Based Marketing, a rare combination that other breeds envy.

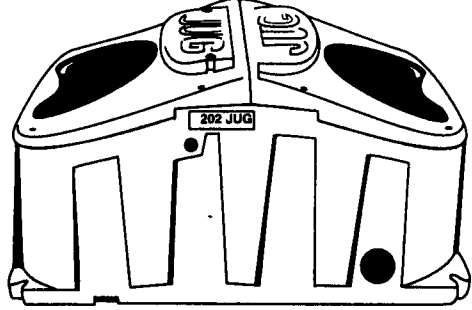


Use Simmental.

For more information contact:
AMERICAN Simmental ASSOCIATION
 Maryland Simmental Association
 B. Gosnell, President
 410-833-3494
 Sec/Treas. Norma Beam
 1-410-239-7759

Participate in the SimGenetic "Win-A-Chevy-Truck" Sweepstakes
 Call or write for details

The JUG passes the "winter of '93-'94" test



Remember the c-c-c-c-cold winter of '93-'94? Wondering what the next one will bring and how your herd will fair?

Install the energy-efficient JUG to reduce concerns about freezing cattle fountains. Even in the coldest weather, the JUG performed, while the competition's waterers did not.

While the JUG's thick urethane insulation keeps the winter cold out, its patented drawtube recirculates water. Cooler bowl water exchanges with warmer reservoir water to keep bowl water open. The JUG will do its job.

A cold weather test conducted by an Iowa college during the winter of '94 demonstrated its energy efficiency. The JUG used only 108 kilowatts of electricity over four months for a cost of \$8.64. A competitor's waterer used 816 kilowatts, costing \$65.28, almost eight times as much. The test confirmed the JUG's energy efficiency.

No other waterer equals the Jug for clean, palatable water. Low maintenance, the JUG also meets the requirements for dairy approval.

REINECKER AG PRODUCTS

7270 Old Harrisburg Road, York Springs, Pennsylvania 17372
(717) 528-8428 or 1-800-247-0037

Brandt's Farm Supply Elizabethtown, PA (717) 367-1221	LOCAL DEALERS	Boivin Farm Supply Vergennes, VT (802) 475-2494
Cedar Crest Equipment Lebanon, PA (717) 270-6600	Pine Glen Farm Service Lewistown, PA (717) 899-7400	Dairyland Sales Troy, PA (717) 297-4128
Lee Hershey Kirkwood, PA (717) 529-6744	Lyc0 Dairy Service Cogan Station, PA (717) 494-0708	SVF Sales Somers, CT (203) 749-4795
Mike Jarrett Montgomery, PA (717) 547-1789	Kauffman Farm Supply, Inc. Mt. Pleasant Mills, PA (717) 539-4571	Ickes Farm Supply Oosterburg, PA (814) 493-2290
Bruce Lemmon Carlisle, PA (717) 249-8434	Hess Equipment Mifflinburg, PA (717) 986-1998	Farmer Boy Ag Myerstown, PA (717) 866-7565
Lyn-Lee Farms State College, PA (814) 238-1233	Comfort Confinement Auburn, NY (315) 252-6923	Maryland Livestock Equip. Mt. Airy, MD (800) 352-4866

For Sale
Limousin Bulls
 Black & Red
 From weaning to breeding age.
 Excellent genetics and performance.
 Also bred & open heifers
Wolfcreek Farm
 703/948-3624

REGISTERED HIGHLAND CATTLE
 Discover the breed that still retains special traits acquired from its ancestors of Scotland
 -Bred cows, heifers and bulls for sale.
 -Health guaranteed.
 -Info available upon request.
DAY DREAM ACRES
 908-303-0902

8a EXOTIC ANIMALS

Deja Vu
 Ullmanns

(610) 868-0186

Female Llama
 being bottle fed bonded to people, wonderful disposition \$2,000
Winding Creeks Farm
717/865-4473

HERDS FOR SALE
NEW AND USED

ALL SIZE HERDS, TIE AND PARLOR, NO B.S.T. HERDS. CATTLE MOVED FROM FARM TO FARM NO JUNK COWS. FINANCING FOR QUALIFIED BUYERS IN LANCASTER COUNTY

MILLER — BARD
QUALITY MAKES THE DIFFERENCE

(717) 786-1146

QUALITY MADE US #1
QUANTITY MAKES ALL #2

Discover
BABY LLAMAS

Our New Arrivals

- ♦ 8 beautiful llama babies
- ♦ 5 babies are 1/2 Bolivian
- ♦ Deposit accepted at 2 months old
- ♦ Welcome them into your home this fall

Backed by Personal Service:

- ♦ General care and handling instructions included.
- ♦ Answer line to help with questions
- ♦ In-depth background on each animal.

R.D. # 2, Box 738, Annville, PA 17003
717-867-5472