



A 1st Class Team  
Together For 25 Years!



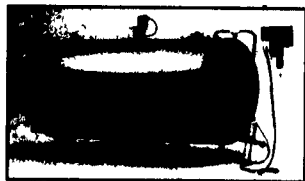
# RUFUS BRUBAKER REFRIGERATION

And...

**MUELLER**  
DAIRY FARM EQUIPMENT

## Offer Scroll-Compressor Technology

New in 1994



*You may pay less for some  
dairy farm equipment...  
but it can cost you more!*

*Equipment cost is  
not the only cost of  
cooling milk.*

In the long run, total operating costs of a Mueller® milk-cooling system are generally substantially less than those of "bargain-brand" milk-cooling equipment.

Example	Mueller	Competition
Cost of equipment	\$31,000	\$28,000
Cost of electricity @ .08 kW for 12,000 lbs milk/day for 10 years	\$17,550	\$22,850
Total operating cost for ten years	\$48,550	\$50,850
Savings	\$2,300	

Contact your Mueller distributor for further comparisons.



**Southern Service Center**  
76 Pumping Station Rd.  
Quarryville, Pa.  
717-786-1617  
Vic Leininger

## MAIN OFFICE

1048 North Penryn Rd.  
Manheim, Pa. 17545

**717-665-3525**  
Ken or Ed Brubaker

**Northern Service Center**  
541 Frystown Rd.  
Myerstown, Pa.  
717-933-4711  
Ken Kopp

★ Call Today For All Your New or Used Milk Tank And Refrigeration Equipment Needs!

## VISIT US AT PA FARM SHOW

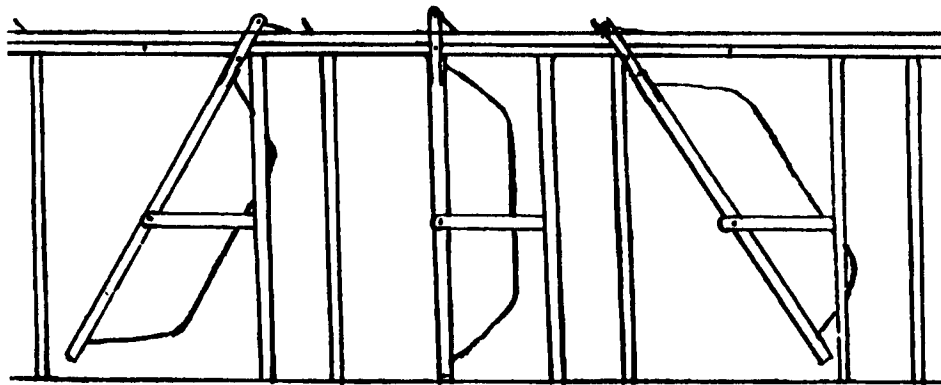
Stop and See Us In The Wayne Wyant Display Area

### See Us for All Your Dairy Care Needs

Tie Stalls (all kinds)  
Free Stalls (all kinds)  
Lever Rows  
Grates (custom made)

Paneling and Pens  
Gutter Grates  
Water Bowls  
Galvanized Pipe  
Energy-Free Drinkers

### NEW FROM SHOW-EASE STALL CO. AUTOMATIC RELEASE SELF LOCKING LEVER ROW

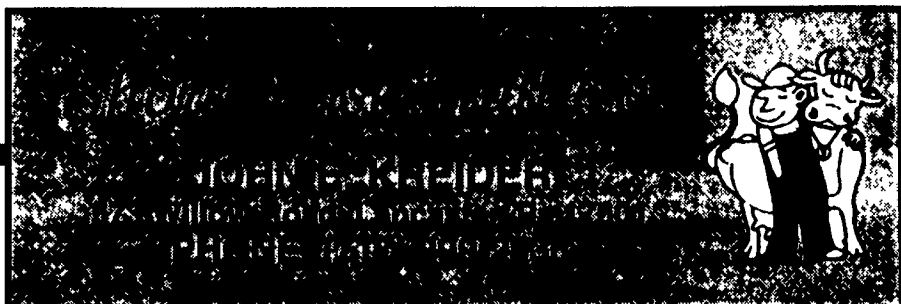


open to eat                      tied                      automatic release

• We custom make to fit your barn. Call for a dealer in your area.

### DID YOU KNOW?

We have many equipment bargains resulting from our Badger rental and leasing business. Stop in and ask us about them today.



## 6 DAIRY EQUIPMENT

2 Westfalia Stimopuls Milk-ers w/Bio Claw, Weaverline 323 Silage Cart (717)756-2370.

(8) DV300 w/Deltatron electric pulsation & super-light claws. 301/790-3698.

Complete pipeline: Surge 8HP, motor and 2300 direct drive vacuum pump (2 months old), (8) Eclipse milker units, (7) True-test milk meters, receiver jar, pump, SS wash vat and pipeline, \$6000. 814-634-5507.

### USED TANKS

545 Gal. Sunset  
600 Gal. D2 Girton  
500 Gal. Jamesway  
625 Gal. D4 Girton  
1000 Gal. OH Mueller  
2000 Gal. OH Mueller

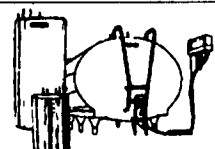
Hagerstown, MD  
301-797-3921

### DURABLE RUBBER

Naturally Comfortable  
**COZY COWMATS**  
and  
**HAPPY MOOMATS**

### CEDAR CREST EQUIPMENT

608 Evergreen Rd.  
Lebanon, PA 17042  
717-270-6600  
800-646-6601



1-1000 gal. Mueller OH  
3-900 gal. Mueller OH  
1-1250 gal. Surge  
500, 600 gal. Milk Keeper  
500, 600 gal. Zeroes  
300, 400, 500 gal. Mojonniers  
300, 400, 500, 600 gal. Girtons  
MANY MORE GOOD USED COOLERS IN STOCK

MARTIN'S  
REFRIGERATION  
(717) 352-2783

## WANTED:

Good Used Milk Tanks - Any Size  
No Ice Banks or Girton

**1-800-448-4697**

## Lapp ENERGY FREE DRINKERS



No Gas/No Electric

**MODEL 4014**  
14 Gallon

**MODEL 2008**  
9 Gallon

- After marketing for 6 years our customers tell us it's still the best and unique drinker you can buy today.
- Units have non-siphoning all plastic 3/4" water valve
- Units have 3/4" PVC shut off-and-on ball valve right behind water valve
- Drinker lid is designed w/no grooves on top that can encourage bacteria-germs that could seep inside unit.
- The Poly-Drinkers are high density urethane foam insulated with drain plugs. Model #3009 has proven to work outside in our area with minimum - 2 horses - and in maximum -50 head beef.



**LAPP CUP**  
Model X-03 Plastic Water Cup  
• No Button! • No Clapper!  
Anti-Siphon Plastic Float Valve = Adjustable Water Level

See US AT PA FARM SHOW - BOOTH # 123

Mfg. By

## DYNAMO COMPANY

New Holland, PA 17557 717-354-9205

- |  |  |
|--|--|
| CEDAR CREST EQUIP<br>Lebanon, PA 717-270-6600            | PEACHEY'S HARNESS SHOP<br>Bellefonte, PA 717-483-6235              |
| PAUL B ZIMMERMAN<br>Lutz, PA 717-738-7350                | SHIRK'S ANIMAL HEALTH<br>East Earl, PA 717-445-5323                |
| DANIEL'S FARM STORE<br>Leola, PA 717-656-6982            | McMILLEN BROS<br>Loysville, PA 717-789-3961                        |
| NISSLEY'S FEEDING EQUIP<br>Willow St., PA 717-786-7654   | VALLEY HARDWARE<br>958 Vintage Rd., Christana, PA 17509            |
| MIFFLINBURG FARMERS EXCH<br>Mifflinburg, PA 717-966-1001 | BRANDT'S FARM SUPPLY<br>Elizabethtown, PA 717-367-1221             |
| SHOW-EASE STALL CO<br>Lancaster, PA 717-299-2536         | LEINBACH FARM MKT<br>Shippensburg, PA 717-532-5511<br>800-346-2334 |
| ZIMMERMAN'S FARM SERVICE<br>Bethel, PA 717-933-4114      | CENTRE HALL FARM STORE<br>Centre Hall, PA 814-364-1393             |
| KREIDER MFG<br>Manheim, PA 717-665-6259<br>800-766-1715  | SOMERSETBARN EQUIP<br>Somerset, PA 814-445-5555                    |
| D&M FARM SUPPLY<br>Bedford, PA 814-623-8129              | POTOMAC VALLEY SUPPLY<br>Hagerstown, MD 301-223-6877               |
|  | WALNUT BARN & DAIRY<br>Port Royal, PA 717-436-5017                 |

## ARE YOUR COWS HAVING FOOT PROBLEMS?

Pamper Them with  
Heavy Gooved  
Rubber Flooring  
For Those Heavily  
Traveled Areas.  
Placed over concrete to  
prevent cows foot problems



COW MATS Save Cows, Time & Bedding. One Piece up to 100 ft.

**Bob Gabel**

Route 16,  
Chaffee, N.Y. 14030  
Phone Collect 716-496-6025



**NEW & USED SPUTNIKS**  
(and Sputnik parts!)

Milkers

## NOBLE ROAD MILKING EQUIP.

S.R. STOLTZFUS • 1523 KIRKWOOD PIKE • KIRKWOOD, PA 17536 • 717/529-1226

Dairy Equipment & Supplies • Sales, Service, & Repair  
Westfalia • Delaval • Top Line • Bou-Matic  
Animal Health Supplies • Soaps & Detergents

SPECIAL PRICE: Sputnik socks - \$49.75/case,  
(6 boxes per case), new vacuum pumps, carrying pails,  
stainless steel tubs, and inflations.



WE INSTALL VACUUM SYSTEMS!



Vacuum Systems