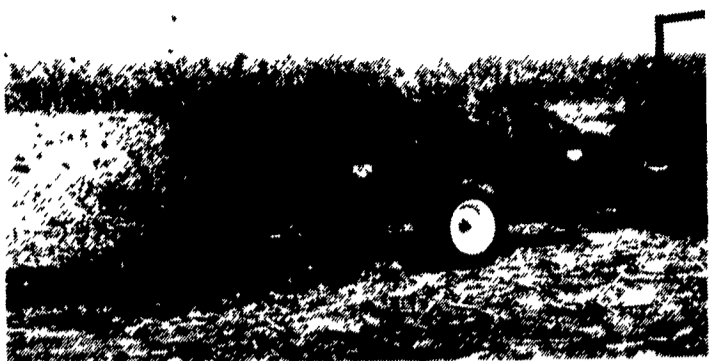


## At Last... A Line Of Manure Spreaders Designed For The Low-Input Farmer.

Affordable and well-built, but no extra frills design. Made for the way you work.



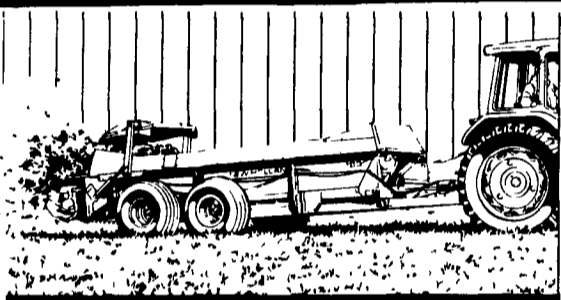
- 7 Sizes available from 25 to 128 bu.
- Ground Drive or PTO.
- High-Density polyethylene floor comes with 20 year warranty.
- Prices start under \$1,000 (plus freight)

If you're in need of a manure spreader but can't justify spending \$4,000 for one, then call us now for a free brochure and price list.



2617 Stumpton Rd., Dept. LF  
Bird-In-Hand, PA 17505  
(717) 656-3050

185



## NO SPREADER BUILT BETTER

- The New Holland Model 185 is built to last.
- Strong, corrosion-resistant steel sides.
  - High-density polyethylene (HDPE) floor.
  - Lifetime Bonded Protection warranty.

This 287-bushel spreader features oscillating tandem wheels that allow faster ground speeds with less ground compaction. Get fast, smooth unloading at two spreading rates with the standard worm gear drive.

Stop in and see why this is the best-selling spreader in its class.



NEWHOLLAND

*Seasons Greetings*  
from everyone at  
**BHM Farm & Lawn Equipment**

We Will Be Closed Monday, Jan. 2nd To Give Our Employees An Extra Day Of Holiday Vacation. For emergency Parts or Service on Jan. 2nd Before 2:30 PM For Parts Call 838-4068 and For Service Call 867-2493 or 933-8714

### QUALITY USED EQUIPMENT FOR SALE

- |                            |                                     |
|----------------------------|-------------------------------------|
| • JD 950 Tractor           | • IH 700 Plow Auto Reset Semi-Mount |
| • David Brown 885 Tractor  | • NH 190 Spreader (Like New)        |
| • Deutz Allis 6260 Tractor | • NH 256 Baler                      |
| • NH 355 Grinder Mixer     | • NH 276 Baler                      |
| • NH 790 Forage Harvester  | • NH 315 Baler w/70 Thrower         |
| • NH 8 Forage Wagon        | • NH 311 Baler w/75 Ejector         |
| • NH 411 Discbine          | • IH 430 Baler                      |
| • NH 38 Flail Chopper      | • NH 855 Round Baler                |
| • NH 162 Hay Tedder        |                                     |
| • (3) NH 489 Haybines      |                                     |

## BHM FARM & LAWN EQUIP.

SALES - PARTS - SERVICE  
Route 934 - 2 Miles North of Annyville, PA  
Telephone 717-867-2211

**1 FARM EQUIPMENT**

**LIGHTNING**  
Material Installation  
Free Estimates or Information mailed  
Call toll free:  
**1-800-532-0990**

**Harvester Knives**  
1-800-WEAVER D

JD cast centers and wheels 16.9x34 tires, 40-50% tread, (3 1/8" axle). JD #30 bale ejector. (717) 324-2168.

## Norm Shores & Son Tractor

RR 5, Towanda, PA 18848

717-265-9014

### USED TRACTORS

- |                                                                                                                 |                                                                               |
|-----------------------------------------------------------------------------------------------------------------|-------------------------------------------------------------------------------|
| JD 4440, cab & air, quad, 1982 model, weights all around, 20.8x38 tires, nice condition                         | Case IH 885, cab, air, 4WD, w/Case IH 2255 Loader, 2300 hours, very nice      |
| JD 4620 w/cab, duals & weights, front wheel assist, nice clean tractor                                          | Case IH 685, 4WD, w/IH 2255 Loader, 700 Hours, Excellent                      |
| JD 4430, cab, air, quad, 77 model, weights all around, very nice                                                | IH 1086, cab, air, 1981, 4WD, 2 remotes, 2 PTO's, 20.8x38 tires, very nice    |
| JD 4320, Factory Cab, Duals, Weights, Quick Hitch, Absolutely 1-Of-A-Kind!                                      | IH 1086, 79 Model, Red Power, Cab, Air, Weights, Excellent                    |
| Ford 7700, Cab, Air, Dual Power, 38" Tires, Blue Power Special, Nice Tractor                                    | IH 986, 81 Model, Cab & Air, Radials, 2400 Original Hours, Immaculate         |
| Ford 7700, Dual Power, Dual Remotes, Weights, 2400 Hours, Excellent                                             | IH 886 4 Post ROPS, w/38" Tires, 2 Remotes                                    |
| Ford 6610 Series II w/Dual Power, Dual Remotes, Dual PTO, Equipped w/Ford 7210 QT Loader, 1000 Hours, Excellent | IH Hydro 84 w/38" tires and bar axles, 2 remotes, IH 2250 quick attach loader |
| Ford 5610 Dsl., Dual Power, Dual Remotes, w/QT Loader, 7' QT Bucket, Ind. Valve, Very Nice                      | MF 3545, 2 PTO's, 2 remotes, 20.8x38, non-cab, extra nice                     |
| Ford 801 Gas 5-Spd., Live PTO, PS, Weights, Chains, Rear Blade, Very Nice                                       | AC 8070, 1984 model, Cab, Air, Weights, 4WD, Power Shift, Excellent           |
| Case IH 5130 Maximum, 4WD, cab, air, power shift, 1300 hours, excellent                                         | AC 7045, Cab, Air, Power Shift, Weights All Around, Good Tractor              |
| Case 2090, Cab, Air, PS, Front Weights 18x38 Tires, Very Nice                                                   | White 2-70, 4WD, 2 remotes, 3 spd. over/under, good condition                 |
|                                                                                                                 | White 2-135, 4WD, cab, air, 2 remotes, 2 PTO's, 2400 hours, extra nice        |
|                                                                                                                 | White 2-155, Cab & Air, Duals, Weights, Triple Outlets, Very Nice             |

FNH 785 Skid Steer, 72" bucket & pallet forks, boom hyd., very clean unit

### FORAGE WAGONS

- |                                                                            |                                                                                 |
|----------------------------------------------------------------------------|---------------------------------------------------------------------------------|
| Gehl 970, 3 Beater w/Roof w/Gehl Tandem Wagon, Used Very Little, Excellent | Gehl 970, 3 beater w/roof & JD 12-ton tandem                                    |
| Dion Forage Wagon, 8 beater w/roof & 12 ton tandem, excellent, choice of 3 | Rex 3 beater w/roof tandem axle wagon, steel sides, very nice condition (Lamco) |
| Gehl 970, 3 beater, no roof, w/JD 12-ton tandem                            |                                                                                 |

### USED FORAGE EQUIPMENT

- |                                                                                   |                                                                               |
|-----------------------------------------------------------------------------------|-------------------------------------------------------------------------------|
| JD 5400 Self Propelled Harvester Cab, 4WD, 4RN Head, Nice Clean Unit              | Gehl 600 w/Manual Controls, 540 PTO, Electric Sharpener And Hay Pickup Head   |
| NH 900, tandem axle, metal alert, electric controls, hyd. tongue, choice of heads | NH 892 w/824 Corn Head And Hay Pickup Head, Electric Controls, Very Nice      |
| Gehl RC800 recutter blower, very nice condition                                   | NH 892 w/3RN Auger Base & 8' Pickup Head, Electric Controls, Good Condition   |
| Gehl 1060 tandem axle, electric controls, hyd. tongue, 7' pickup & 2RN corn       | JD 3960 w/2RN Or 2RW, Electric Controls, Hyd. Tongue, Nice Original Harvester |
| Gehl FB88 forage blower, very nice                                                |                                                                               |
| Gehl 1200 w/Electric Controls w/3RN Corn Head, Good Condition                     |                                                                               |

### USED PLANTERS AND DRILLS

- IH 510 18x7 DD drill w/3 compartments, excellent  
JD 7000 4R conservation, monitor, dry fert. & insecticide boxes  
JD 7000 4RN, dry, plateless, insecticide boxes

### USED PLOWS AND CHISELS

- Ford 151 4x18 spring auto reset w/spring loaded coulters, very nice (same as White 508)  
IH 720 4x18 auto reset w/coulters & gauge wheel  
Oliver 588 4x18, auto reset w/coulters & gauge wheel  
JD 1710 9-tooth mulch tiller w/walking tandems, very nice

### USED DISCS AND HARROWS

- Brillion 11' Packer w/4" Axle  
Knowles 20' Transport Spring Tooth Harrow w/Leveling Rake, Very Nice  
Bush Hog 1440 18' hyd. wing fold rock flex finishing disc  
Brillion 10' double packer  
JD 16' transport type spring tooth harrow, good condition  
McConnell 16' transport spring tooth harrow  
White 253 12' finishing disc w/tandem wheels, very nice  
White 265 11' heavy frame cutting disc w/tandem wheels & 24" blades

### USED HAY EQUIPMENT

- NH 450 3 Pt. Sickle Bar Mower w/7' Bar  
Gehl 318 Hyd. Fold "V" Rake, Excellent Condition  
JD 625 3 Pt. Hyd. Drive Hay Rake, Excellent  
Hesston 1014 12' hydro swing haybine, stub guards, nice clean machine  
FNH 489 Haybine w/Stub Guards, Good Rolls, Nice  
NH 479 haybine, very nice  
NH 258 rake w/dolly wheel & rubber teeth  
NH 316 w/#70 thrower, excellent

### USED HARVESTER HEADS

- Gehl 2R Snapper head, very nice  
NH 770 Hay Pickup Head  
NH 3 RN Auger base package w/8' pickup

### MISCELLANEOUS

- |                                                   |                     |
|---------------------------------------------------|---------------------|
| 18x38 Axle Mount Duals For Ford                   | 18x34 Snap-On Duals |
| 18x38 Axle Mount Duals For IH                     | 20x38 Snap-On Duals |
| Allied 760 QTw/7' bucket and brackets for JD 4020 |                     |