

Route 41  
Atglen, Pa. 19310



800-964-1550  
610-593-3500  
fax 593-2510

**NOTICE...HOLIDAY HOURS**  
We will be closed from December 24, 1994  
until 7AM January 2, 1995

**Post & Frame Building Materials**  
**Metal Roofing our Specialty**



R Panel - 26 Gauge

- 20 yr. warranty
- 26 & 29 Gauge
- Window Doors
- Insulation
- Overhead Garage Doors
- Electric Openers
- Trusses

**Ask About Special Pricing On Close Out Colors**

**FLOORING**

Ash "Golden-Oak", Red Oak, Walnut,  
3 to 7 Inch Wide Planks, 3/8 and 3/4"  
Thick, T&G, KD,  
\$1.95 to \$2.75 Sq. Ft.

Custom & Stock Floor & Moldings

**610-565-6038**

**Pole Buildings**

30x40x10  
1-10x10 Slider  
1-Service Door \$7,195

24x32x8  
1-9x7 Overhead Door  
1-Service Door \$5,395

Other Sizes Available

Call Anytime

**1 (800) 352-1782**  
Cheyenne Buildings

**4 BUILDINGS AND SUPPLIES**

**Winners Move Fast!**

**LIQUIDATION SALE!**

Cancelled Models Must Be Cleared!



Qty.	Size
2	40'x60'
1	50'x100'
3	40'x40'
2	30'x42'

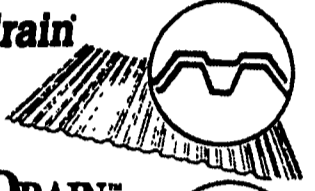
Call Immediately!  
**American Steel Arch, Inc.**  
**1-800-942-1234**

First Come-First Serve!  
Limited Inventory!

**Roofing & Siding**

**Channelrain**

Available in 12 Colors



**CENTURYDRAIN**



Best Color Retention in the Industry  
Full Line: Nails, Trim, Screws  
Delivery Available

**MARTIN'S ROOFING & SIDING**  
258 Walnut Bottom Rd. Rt. 81  
Shippensburg, PA 17257 Exit 10  
**(717) 532-3460**

It Pays To Use MSR Lumber



MACHINE STRESS RATED

LMA5 SPS-2 S-Dry

2250 f 1.9E

R.D. #3 Box 370-A1 • Cogan Station, PA • 17728

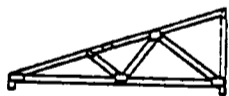
**BLACK BEAR TRUSS, CORP.**

"OUR TRUSSES BEAR UP"

Happy Holiday • Many Thanks To Our Valued Customers.

We appreciate your business and look forward to serving you in 1995

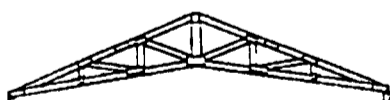
Thank you for putting your trust in us!



MONO



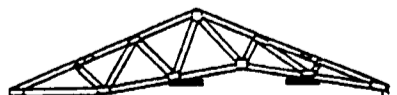
FINK TRUSS Top Chord Overhang



S66 - DOUBLE HOWE SCISSORS



DOUBLE CANTILEVER Bottom Chord Overhang

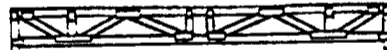


VAULT Slope Slope



STUDIO WITH TWO BEARING POINTS

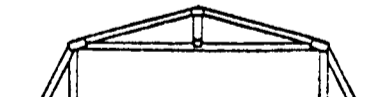
- ✓ On-Site in Ten Days
- ✓ Crane Optional with Delivery
- ✓ Custom Built with MSR Lumber
- ✓ First Quality
- ✓ Reliable Schedule
- ✓ Competitive Prices
- ✓ Personal Service



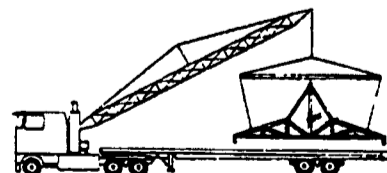
FLOOR TRUSSES



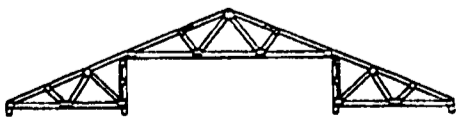
DUAL SLOPE (DOUBLE PITCH)



GAMBREL ATTIC



ROOM-IN-ATTIC



3 PIECE RAISED CENTER BAY



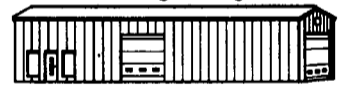
FLAT (PRATT)



Contact your nearest dealer or  
**Call 1-800-326-9689**  
or Fax (717) 998-9875

**HAPPY HOLIDAYS!**

We would like to THANK YOU for helping us make Independence Steel Products North East, Inc one of the fastest growing All-Steel Building Companies in this country! In doing so, we have set up a QUICK-SHIP\* Building Package!



This special building is set up to provide you with,  
\*QUICK DELIVERY  
\*LOW TOTAL INVESTMENT  
Choose widths from 30' to 60' and lengths to meet your needs!  
\* Loads may not be applicable for all areas.

Call for a FREE Brochure...

**INDEPENDENCE**  
STEEL PRODUCTS NORTH EAST, INC.

**1-800-553-7833**

**POLE BUILDINGS**  
"KOHLER & KOHLER"  
WE SPECIALIZE IN POLE CONSTRUCTION



We're Building Our Business On Customer Satisfaction And Quality Construction. We Are Prepared To Meet Your Building Needs At Saving Prices

Please Call For Your Free Estimates  
**(717) 252-2874**