

Keystone Peterbilt, Inc.

1467 Manheim Pike • P.O. Box 4396 • Lancaster, PA 17604

1-800-243-2458



717-299-6630

Trucks - New and Used

1995 MODEL 330 MEDIUM DUTY
PETERBILT Engine Cat
 3116 230 HP,
 Transmission Fuller
 FS6306A, 6 Speed, Rear
 Axle Eaton 21065S
 21,000 Front Axle Eaton
 EFA 12F4 12,000 Wheel
 Base 190 Cab to Axle
 120 Cab to End of Frame
 195 33,000 GVW



1989 PETERBILT 378 Conventional, wheelbase 235", Faton DS402 40,000 lbs.; 3406B 50 ATAAC 425 @ 1800, 1450 @ 1200; Jacobs Brake 3406B; Fuller RTO 15618 18 Speed; Alum Cab 119" BBC Fargis Hood; 48" Sleeper



1981 FREIGHTLINER FLC12064 NIC-400 Engine, RTO12515 Trans., 38,000-4 11 R. Axle, Susp, F-Liner, Air



1989 FREIGHTLINER FLT-86, 2 Axle Tractor, 3406 Eng, RTX1609B Trans., RS23 1160 R Axle, Spring Susp.



1989 PETERBILT, Model 375, Eng. Cat 3306, 300 HP Trans., Fuller TR11609A, Eaton Drive DS402 Ratio 3.55

C.P. MARTIN FORD, INC.

RT. 272 ACROSS FROM THE GREEN DRAGON SIGN IN EPHRATA-THE HEART OF LANCASTER COUNTY

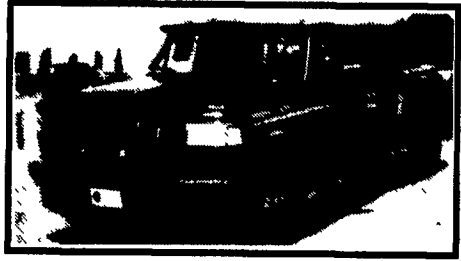
733-6644 OR 1-800-258-2677

'93 CHEVY Z-71 SUPERCAB, V-8, Auto., 40,000 Miles (P411)	'93 CHEVY SILVERADO 4X4, V-8, Auto., 10,000 Miles (F135)	'93 FORD F-150 4X4, 6 Cyl., 5 Spd., 11,000 Miles (4181A)
'93 FORD F-150 4X4, XL, Auto., Blue (P399)	'93 FORD F-150 4X2, XLT, 302, V-8, Auto., Short Bed, Only 5,800 Miles (4234A)	'93 FORD F-150 4X2, XLT, V-8, Auto., 13,000 Miles (6058A)
'89 FORD F-250 4X2, Supercab, V-8, Auto., XL (F107)	'92 FORD F150 4X2, Supercab, XLT, Auto., Loaded (6052A)	'91 FORD BRONCO 4X4, Eddie Bauer, Red, Loaded, 46,000 Miles (F108)
'92 FORD E-150 Cargo Van, Auto., 31,000 Miles (P374)	'92 FORD E-350, 15 Passenger, Red, Loaded (N613A)	'94 FORD F-150 4x4, V-8, Auto., 16,000 Miles, Red (F136)

Mark Vills • Pickups • Broncos • Stake Body • Crew Cabs

Contours • Aspires • Diesel Pickups • Mustangs • Thunderbirds

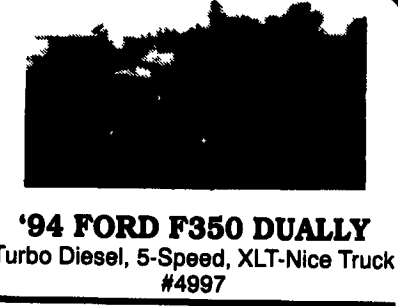
Explorers • Grand Marquis • XLTs • Custom Vans



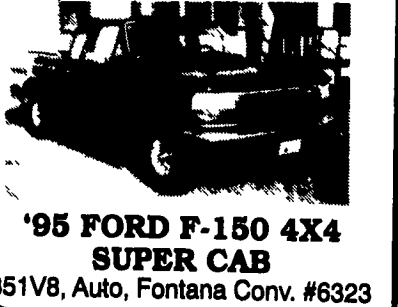
Great Selection F250's & F350's Supercab & Crew Cab
 Turbo Diesels In Stock



'95 FORD AEROSTAR XLT
 All Wheel Drive - Great In The Snow
 8 To Choose From



'94 FORD F350 DUALY
 Turbo Diesel, 5-Speed, XLT-Nice Truck
 #4997



'95 FORD F-150 4X4 SUPER CAB
 351V8, Auto, Fontana Conv. #6323



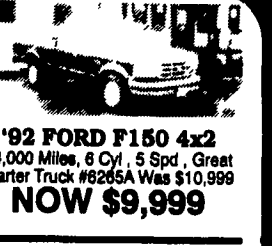
'95 FORD F250 SUPERCAB
 4X4, V8, Automatic, XLT Package
 #6355



'93 FORD EXPLORER
 XLT, Loaded, Only 33,000 Miles
 #P2037, Was 23,999
NOW \$22,799



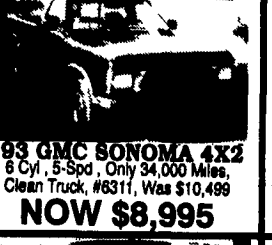
'93 FORD RANGER
 Super Cab 6 Cyl., 5 Speed, Air, Cassette,
 12,000 Miles, #P2027, Was \$14,999
NOW \$13,664



'92 FORD F150 4x2
 44,000 Miles, 6 Cyl., 5 Spd., Great
 Starter Truck #6265A Was \$10,999
NOW \$9,999



'91 FORD F-150 4X4
 Air Cond., PS, PB, Only 11,000
 Mi., #6197A
A STEAL AT \$14,999



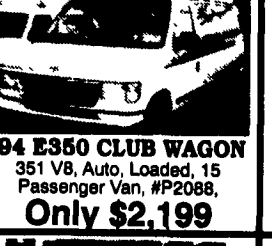
'93 GMC SONOMA 4X2
 6 Cyl., 5-Speed, Only 34,000 Miles,
 Clean Truck, #6311, Was \$10,499
NOW \$8,995



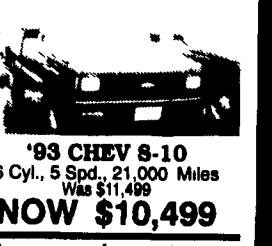
'93 FORD F150 4X2
 Supercab, 302 V8, Auto, XLT,
 13,000 Miles, #P2028 Was \$18,999
NOW \$18,199



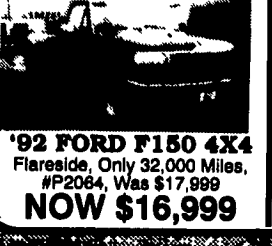
'93 FORD F150 4X4
 Supercab, 31,000 Miles, 302, Auto,
 #P2061 Was \$21,999
Now \$20,799



'94 E350 CLUB WAGON
 351 V8, Auto, Loaded, 15
 Passenger Van, #P2088,
Only \$2,199



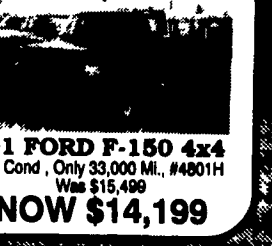
'93 CHEV 8-10
 6 Cyl., 5 Spd., 21,000 Miles
 Was \$11,499
NOW \$10,499



'92 FORD F150 4X4
 Flareside, Only 32,000 Miles,
 #P2084, Was \$17,999
NOW \$16,999

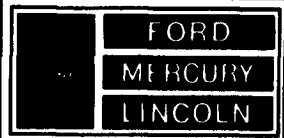


'91 FORD RANGER XLT
 50,000 Miles, Manual, 4 Cyl.,
 Economy Drive w/Truck Ability,
 #5083A Was \$7,999
NOW \$7,499



'91 FORD F-150 4x4
 Air Cond., Only 33,000 Mi., #4801H
 Was \$15,499
NOW \$14,199

Unless the Sheehy Emblem is on Your Car or Truck... You Probably Paid too Much!



LEBANON

-20th & CUMBERLAND STS. - RT. 422 WEST
 9-9 DAILY; 9-5 SATURDAY • SHEEHY HOTLINE : (717) 272-7671 OR 533-5293

PARTS DEPT OPEN
 DAILY 8-5
 SAT 8-12
 717-273-8168

Mystiques • Cougars • Continentals • Town Cars • 4x4s • Rangers