

1989 Dodge 3/4 ton Cummins turbo diesel A.T., P.S., P.B., A.C., AM/FM, P.W., P.L., T.W.C.C., 104,000 miles, in excellent condition **\$8,995**

**COUNTRYSIDE AUTO SALES**  
(717)664-2170 OFFICE  
(717)865-3488 HOME

- 89 Silverado ext. cab 4x4, long bed, 8600 GVW, auto, 400 HD trans., tow package
- 91 Silverado ext. cab, long bed, 8600 GVW, 3:73 rear, loaded, 47,000 miles
- 93 Silverado 4x4, 8' bed, 8600 GVW, 4:10 rear, tow package, loaded
- 1993 Ford F150 XLT ext. cab, 4x4, 1-owner, loaded

**717/733-6548**

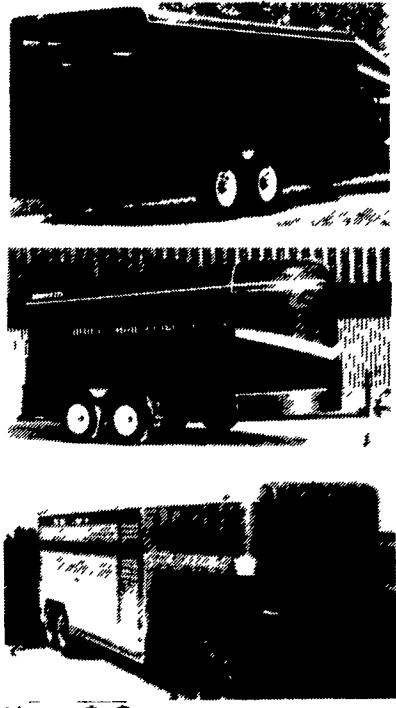


**1987 CONV TANDEM FREIGHTLINER TRACTOR** all new tires, Wetline, 350 Gig cam comm, 3 stage Jake, 9 speed Fuller, air cond Like New, 240 K miles

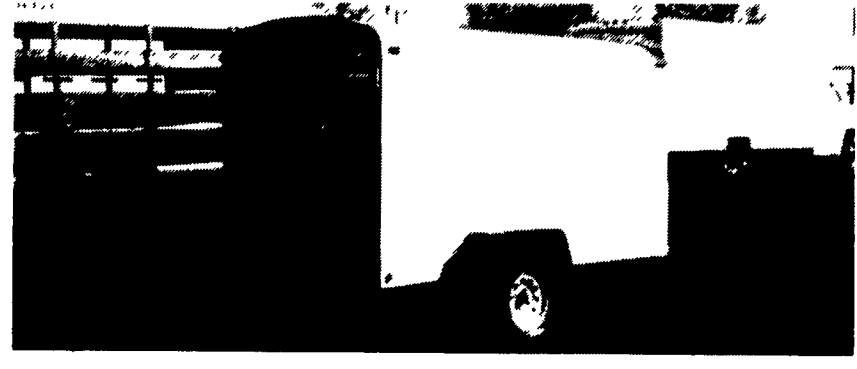
**Price \$19500**  
**914-726-4180**

- (1) 1985 Mack Tri Axle Dump RD686S Tag for 73,280, Engine 300 HP, Transmission 6 Speed, Miles 225,000; Jacob Brake; Power Steering; Tires 11Rx24.5 Front & Rear 70%; Tires Two Extra 80%; Wheels Cast Spoke Type, Air Condition; Radio AM-FM Cass
- (1) 1986 GMC Stake Body Engine Gas; Miles 44,000; Transmission 4 Speed; GVW 24,500; 5 Speed Rear Axle; Body 18' Stake with Hoist for Dump; Color blue
- (2) 1984 Ford F600 Dump Trucks GVW 21,200; Engine 370 V-8 Gas; Transmission 4 Speed; Miles 68,762; Color Black; 5 Speed Rear Axle; Tires 50%; 12' Dump Body

Please call and ask for more information, Joe Sheetz, Charlie Heilman, Bill Martz.



**Enclosed Utility Trailer**



**ECONOLITE STEEL FLATBEDS**

**TWO HORSE THOROUGHbred WITH DRESSING ROOM \$5995**

4161 Oregon Pike Ephrata, PA 17522



**STAR** Chevrolet • Oldsmobile • Geo  
627-1220 or 859-7700  
AT THE BROWNSTOWN EXIT OF RT. 222

**DIESEL**



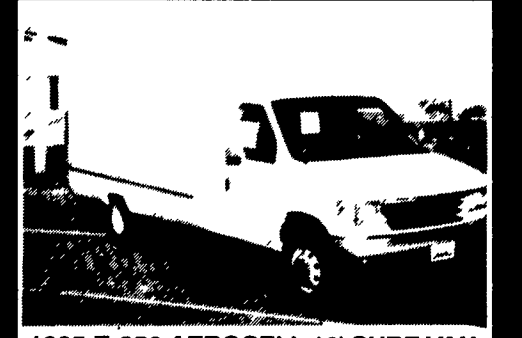
(4) 1995 F-350 4X4 THIELE 8' E-LINE CHOR BOY DUMPTRUCKS all with Ford's 7.3L Powerstroke turbo diesel, 5-speed transmission, 2-3 yd. capacity, 11,000 GVW, (1) in stock, (3) more on the way, (2) will also have a Western unimount snow plow **CALL TODAY!**

**DIESEL**



(6) 1995 F-450 SUPER DUTY THIELE 8' AND 10' E-LINE CHORBOY DUMPTRUCKS all with Ford's 7.3L Power Stroke turbo diesel, 5-speed transmission, 3-4 yd. capacity, 15,000 GVW **COMING IN SOON!**

**DIESEL**



1995 E-350 AEROCELL 16' CUBE VAN 7.3L Power Stroke Turbo Diesel, automatic overdrive with air conditioning **COMING IN SOON!**

**351**



1995 E-350 AEROCELL 14' CUBE VAN 351, auto overdrive with air conditioning **IN STOCK READY FOR BUSINESS!!**

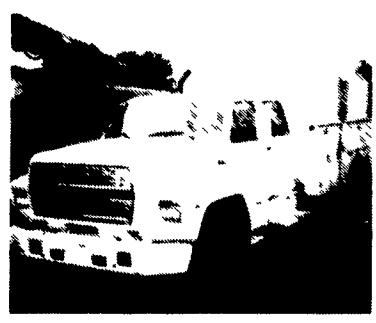
OUR LOWEST "NO HASSLE PRICE" IS MARKED ON EVERY VEHICLE EVERY DAY PERIOD

TRY US! 717-949-2000  RD 7, Box 405 Lebanon, PA 17042 **KELLER BROS.**

**Huntingdon Equipment**

Rentals Available **GOOD USED EQUIPMENT**

Huntingdon Valley, PA • 215-672-9667 • 1-800-543-3833 • Eddle



1985 F-600 8.2 Diesel, Auto, 5 Man Cab, Utility With Rollup Door On Rear, Clean, Low Mileage, 1 of 3



1970 Ford 800 V8 5 Speed with Aux. Trans, 39,000 GVW, VAC Brakes 13'4" Fran Fleet Maintained, 73,000 Miles.



International Presser Digger This Unit Is Ready To Work. Fall Sale Price \$6,500.



Holan 70' Double Bucket 75' working height mounted on 1981 Western Standard, 6x6 Flatbed, CAT 3208, Auto



Need a Lift? We Have A Large Selection Of Boom Trucks Up To 14,000 lbs. Cap Some With Post Diggers.



Bucket Trucks 28' to 65' Gas and Diesel. Call For Details.

**DIGGER DERRICKS/AERIAL BUCKETS/UTILITY EQUIPMENT**