

VIRGINIA CATTLE & HOGS

Virginia Weekly

Richmond, Va.
Wednesday, Dec. 14, 1994

WEEKLY REVIEW IN VIRGINIA: REVIEW OF VIRGINIA DIRECT HOGS FOR THE PERIOD DECEMBER 6-12, 1994. RECEIPTS FOR HOT CARCASS BASIS TOTALED 2565 HEAD. RECEIPTS FOR LIVE BASIS PLANT DELIVERY (WITHIN A 30 MILE RADIUS) TOTALED 425 HEAD. RECEIPTS FOR LIVE BASIS COUNTRY BUYING STATIONS TOTALED 594 HEAD. THE VIRGINIA DIRECT HOG MARKET - TRENDS COMPARED TO LAST MONDAY BARROWS AND GILTS: HOT CARCASS BASIS 163-191 LB. CARCASS TREND: \$3.64 HIGHER. PRICE: \$41.06 48% LEAN YIELD <27mm(1.15 IN. TENTH RIB) BACK-FAT. LIVE BASIS LOCAL PLANT DELIVERED (WITHIN 30 MILE RADIUS) US 2-3 220-250 LBS. TREND: \$1.50 HIGHER. PRICE: FEW 27.50-29.50. LIVE BASIS VIRGINIA COUNTRY POINTS U.S. 1-3 220-250 LBS 24.00.

SLAUGHTER STEERS AND HEIFERS 0%; SLAUGHTER COWS 13% SLAUGHTER BULLS 2%, SLAUGHTER CALVES AND VEALERS LESS THAN 1%; FEEDER CATTLE UNDER 600 LBS 60%, OVER 600 LBS 25%. PRICE RANGES FOR VIRGINIA WEEKLY AUCTIONS: SLAUGHTER

COWS TOTAL HEAD COUNT 1193 HEAD UTILITY & COMMERCIAL COWS 2-4 34.00-44.25 CUTTER & BONING UTILITY 1-3 31.00-43.00 CANNER & LOW CUTTER 1-2 25.00-39.50.

SLAUGHTER BULLS: HEAD COUNT 150 HEAD BULLS - 1-2 900-1300 LB 38.00-48.00 FEW 54.50 1-2 1300-1600 LB 42.00-54.00 1-2 1600 LB & OVER 41.25-53.00.

SLAUGHTER CALVES 30 HEAD CALVES - GOOD & CHOICE 250-500 LB. 58.00-62.00.

SLAUGHTER LAMBS TOTAL HEAD COUNT 374 HEAD WOOLED CHOICE FEW PRIME 1-2 FEW 3 91-129 LB. 67.50-72.50 GOOD & FEW CHOICE 1-2 83-89 LB. 75.25-83.50 GOOD & FEW CHOICE 1-2 90 LB. 69.50 GOOD & FEW CHOICE 1-2 66-69 LB. 88.50-90.00 FEEDER LAMBS MEDIUM & LARGE 1-2 85-100 LB. 65.50-74.50 MEDIUM & LARGE 1-2 70-85 LB. 72.00-82.00 MEDIUM & LARGE 1-2 60-70 LB. 72.50-90.75

SLAUGHTER HOGS 68 HEAD BARROWS AND GILTS **SEVERAL LQTS RETURNED FOR HOME SLAUGHTER- ** US 1-3 200-250 LB. 27.25-32.50 US 2-4 250-300 LB. 22.150-30.00 FEW 32.00-45.50.

SOWS US 1-3 300-500 LB. 25.00-27.00, US 1-3 500 LBS. & OVER 21.00-25.00.

FEEDER CATTLE TOTAL HEAD COUNT FOR ALL WEIGHTS 7554

HEAD. STEERS: MEDIUM 1 300-400 76.00-89.00 400-500 70.00-80.00 500-600 60.50-77.00 600-700 62.00-72.00 700-800 60.00-72.00 800-900 59.50-69.50 900-1000 54.50-64.50.

HEIFERS: MEDIUM 1 200-300 65.00-73.00 300-400 59.00-74.00 400-500 55.00-70.00 500-600 50.00-66.00 600-700 54.00-66.00 700-800 53.00-61.00 800-900 48.00-56.00.

SPECIAL SLAUGHTER CATTLE SALE HELD AT MADISON, VIRGINIA ON DECEMBER 10, 1994 101 HEAD SOLD. STATE GRADED.

SLAUGHTER STEERS AND HEIFERS 99 HEAD.

STEERS CHOICE 2-3, 1000-1150 LB. 64.50 - 65.50 CHOICE 2-3, 1150-1300 LB. 62.00 - 67.00 CHOICE 2-3, 1300-1450 LB. 61.75 - 67.00 CHOICE 2-3, 1450 LBS. & OVER 57.75 - 64.50 SELECT 2-3, 1000-1200 LB. 58.75 - 62.50 SELECT 2-3, 1200 LBS. & OVER 52.00 - 58.75.

HEIFERS CHOICE 2-3, 950 LBS. & UNDER 42.00 - 52.00 CHOICE 2-3, 950-1100 LB. 52.50 - 62.25 CHOICE 2-3, 1100-1300 LB. 61.00 - 66.00 CHOICE 2-3, 1300 LBS. & OVER 63.50 - 63.75.

SLAUGHTER COWS 2 HEAD BREAKING UTILITY & COMMERCIAL 2-4 35.00 - 38.00.

SPECIAL GRADED SLAUGHTER CATTLE SALE HELD AT FREDERICKSBURG, VIRGINIA ON 08-DEC-94 106 HEAD SOLD STATE GRADED.

STEERS CHOICE 2-3, 1000-1150 LB. 63.25 - 66.00 CHOICE 2-3, 1150-1300 LB. 61.00 - 68.50 CHOICE 2-3, 1300-1450 LB. 60.25 - 67.40 CHOICE 2-3, 1450 + 55.00 SELECT 2-3, 1000-1200 LB. 55.00 - 58.50 SELECT 2-3, 1200 + 55.25 - 61.75.

HEIFERS CHOICE 2-3, 950-1100 LB. 55.50 - 64.50 CHOICE 2-3, 1100-1350 LB. 60.00 - 67.00 CHOICE 2-3, 1300 + 56.00 SELECT 2-3, 1100-1300 LBS. 51.00 - 55.50.

SPECIAL SLAUGHTER CATTLE SALE HELD AT MARSHALL, VIRGINIA ON DECEMBER 6, 1994 48 HEAD

SOLD STATE GRADED.

STEERS: CHOICE 2-3 1150-1300 LB. 64.50-67.75 CHOICE 2-3 1300-1450 LB. 64.60-68.50 CHOICE 2-3 1455-1650 LB. 59.75-65.50 SELECT 2-3 1170-1335 LB. 55.00-60.00.

WEEKLY SUMMARY OF STATE GRADED FEEDER CATTLE SALES FOR THE WEEK OF DECEMBER 5 THRU 10, 1994. TOTAL 2901 HEAD SOLD. SALES WERE HELD AT THE FOLLOWING AREAS:

DEC. 5, LYNCHBURG 318 HEAD DEC. 6, WYTHEVILLE 179 HEAD DEC. 8, HARRISONBURG (ROCKINGHAM) 975 HEAD DEC. 8, CULPEPER 979 HEAD DEC. 8, FRONT ROYAL 450 HEAD.

STEERS 1619 HEAD MED & LARGE 1 SMALL 1 MED & LARGE 2 300-400 71.50- 87.00 62.00- 67.00 69.00- 84.50 400-500 70.00- 86.00 60.00- 69.00 65.00- 85.00 500-600 64.50- 76.50 60.00- 63.00 60.00- 77.00 600-700 61.50- 73.00 52.00- 64.00 58.00- 68.25 700-800 64.00- 73.00 58.00 59.00- 62.50 800-900 63.00- 72.00 59.00- 60.25 55.00- 58.00 900-1000 64.50- 70.25 - 63.75 1000-1100 60.00- 64.00.

HEIFERS 1275 HEAD MED & LARGE 1 SMALL 1 MED & LARGE 2 300-400 54.00- 70.00 53.50 59.00- 70.00 400-500 60.00- 67.00 50.00- 54.50 53.00- 66.00 500-600 59.50- 65.00 50.00- 57.00 51.00- 64.00 600-700 59.00- 66.75 45.50- 51.00 49.00- 60.00 700-800 55.00- 65.75 - 58.00 800-900 52.00- 59.00.

BULLS 7 HEAD MED & LARGE 1 400-500 79.50 500-600 75.50.

A SERVICE OF VIRGINIA DEPARTMENT OF AGRICULTURE & CONSUMER SERVICES MARKET NEWS OFFICE IN COOPERATION WITH USDA. 804-786-3947.

North Virginia

Richmond, Va.
Thursday, Dec. 15, 1994
THE ORANGE AND BLACKSTONE AUCTIONS ARE UNAVAILABLE TODAY. THERE WILL BE NO REPORTS.

Belleville Livestock Auction

Belleville, Pa.
Wednesday, Dec. 14, 1994
Report Supplied by PDA

CATTLE 298... PDA .. Supply included 190 head Dairy cows ..sl. cows 1.00 lower. HOLSTEINS: few Select 55.35-59.60, few Standard 48.00-50.50. COWS: Breaking Utility and Commercial 38.50-42.60, Cutter and Boning Utility 37.00-41.50, Canner and Low Cutter 32.00-36.50. Shells down to 26.00. BULLS: one Yield Grade No. 1 1530 lbs. 47.00, few No. 2 880/1300 lbs. 39.00- 44.10. FEEDER CATTLE: Bulls: few Medium Frame No. 1 600/800 lbs. 46.50-49.00.

CALVES 90... VEALERS: few Standard and Good 75/90 lbs. 42.00-47.00, Utility 55/85 lbs. 26.00-40.00. FARM CALVES: No. 1 Holstein bulls 90/125 lbs. 90.00-130.00, No. 2 80/120 lbs. 50.00-70.00; few No. 1 Holstein heifer 100/145 lbs. 100.00-200.00.

HOGS 38... BARROWS AND GILTS: US 1-2 225/245 lbs. 32.00-32.10, two head 33.75. SOWS: one US 1-3 60 lbs. 19.75. BOARS: couple 10.00 & 18.00.

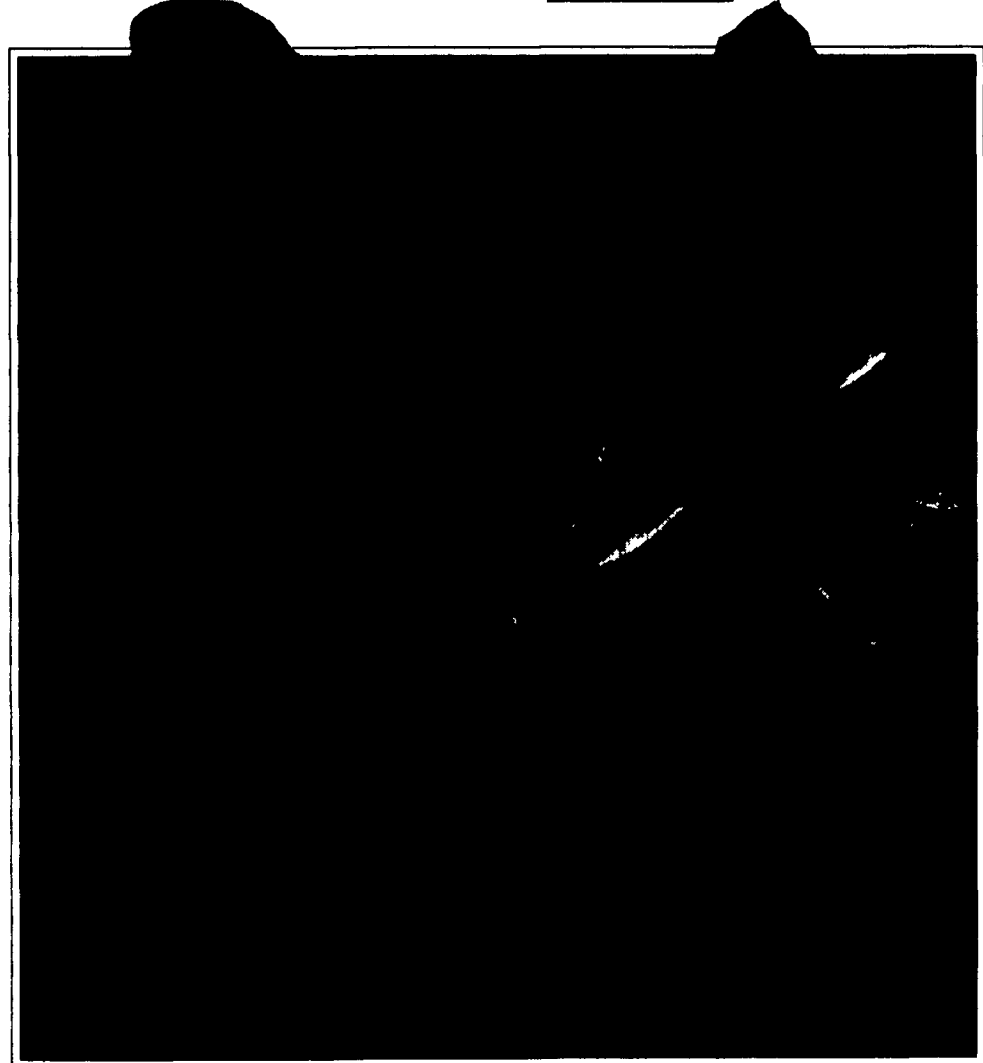
FEEDER PIGS 106... US 1-3 20/30 lbs. 9.00-15.00, lot 75 lbs. 22.00, lot 125 lbs. 37.00. --- per head.

SHEEP 38... Slaughter lambs: Choice 60/125 lbs. 65.00-78.00. New Crop lambs: few Choice 50/70 lbs. 90.00-131.00. Slaughter sheep: 21.00-32.00.

GOATS 6... Few Large 34.00-65.00. --- per head.

HOLSTEIN DAIRY COWS \$650.00-\$1400.00 mostly \$800.00-\$1200.00. --- per head.

INTRODUCING PRISM2...



Prism... a good alfalfa made better with Prism2!

- Superior Yield Potential
- Excellent Winterhardiness
Fall Dormancy = 4 WH = 2.5
- Better Disease Resistance
- High Resistance to Cool Season Leaf Diseases
1.38 out of 5
- 80-90% Multi-leaf Expression



Our reputation is growing in your fields!
1-800-442-7391

Breathe Clean, Cool Powered Air



Combined respiratory, head, eye, and face protection creates a personal mini-environment of clean air for you to work. You can do more work in less time because you take fewer breaks. By increasing productivity you

increase profit - not to mention comfort!
Use it for:

- Ragweed and other pollens in field mowing
- Making hay - especially round bales
- Combining
- Handling poultry
- Cleaning chicken houses

Similar products available to protect you in your orchard spraying and to control odor problems.

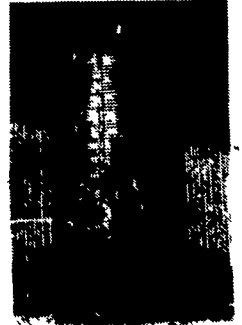
— Call 1-800-234-7417 for more information —

S.E.I. ENVIRONMENTAL SUPPLY
21515 Peachtree Road, PO Box 368, Barnesville, MD 20838
301-972-7417 • FAX 301-916-3517 • Toll Free 1-800-234-7417
VISA/Mastercard Accepted



QUALITY BINS

We assemble, deliver & set-up bins on your farm



Models Available: Your Choice Of 6, 7, 9, 12 and 15 Ft. All Galvanized Hepper-Bottom Bins

We Ship UPS
Check Our Warehouse Prices 24-Hour Service

Swine & Poultry Systems Specialists
FARMER BOY AG.
410 E. LINCOLN AVE., MYERSTOWN, PA 17067
Hours: Mon.-Fri. 7:00 to 5:00; Saturday 7:30 to 11:30
PH 717-866-7565