

**Public Auction Register**

Closing Date Monday 5:00 P.M. of each week's publication

**FEBRUARY**  
 WED. FEB. 1 - 6:30 PM Winross Trucks & Toys. A&C Diefenbach Auction, Inc. 100 W. Jackson St., New Holland, Pa.  
 FRI. FEB. 3 - 10 AM Horse Sale. New Holland Sales Stables, Inc. 101 W. Fulton St., New Holland.

**Lancaster Farming, Saturday, December 17, 1994-B31**

FRI. FEB. 10 - 9AM Farm equip., tractors & farm supplies. A&C Diefenbach Auction, Inc. 100 W. Jackson St., New Holland, Pa.

port, Pa. near Rt. 15 blinker light. Jonas & Salone Fisher, owners. By Fraley Auction Co.

Robert E. and Jeffrey R. Martin, Randall L. Ranck, aucts.

SAT. FEB. 11 - 11AM Penn Yan, New York. Aaron Weaver Farm Machinery Auction. Pirrung Aucts, Inc 716-728-2520.

THURS. FEB. 23 - 10AM Farm machinery. Located E. of Lanc. from Junction of Rt. 30 and 41 go S. on Rt. 41 1 mile to Town Clock, turn right, cross railroad bridge turn left on Mine Rd go approx. 2 miles to Smyrna Rd. turn left first farm on right. Lanc. Co., Pa. For Calvin D and Lillian Beiler. Leon E. Kurtz, J. Omar Stoltzfus, Aucts.

FRI. FEB. 24 - Modern farm machinery, 6 tractors, backhoe, Case 1h 1460 combine, etc on farm 3 miles W of Muncy near Mall Sellers, Muncy Farms-Frank White. Fraley Auction Co

FRI. FEB. 17 - 10 AM Horse Sale. New Holland Sales Stables, Inc., 101 W Fulton St., New Holland.

THURS. FEB. 23 & FRI. FEB. 24 - 8:30AM Farm equip, new, used and abused, antique tractors and engines. Located 10 miles E. of Lanc. turn off Rt. 23 on S. Groffdale Rd. Right on Mussers School Rd, Lanc. Co., Pa Elias S and B. John Beiler, owners.

FRI. FEB. 24 - 11AM Farm machinery. One mile West of the Buck, along Rt. 372 or app. 6 miles E. of Rt. 74. By Marvin & Shirley Herr. Kreider, Kline & Good Aucts.

MON. FEB. 20 - 10:30AM (Blizzard Date Feb. 22). Shrewsbury (York Co.) Pa Thompson Farms Auction of Tractors, Trucks, Irrigation and Potato Farming Equip. Pirrung Aucts., Inc. 716-728-2520.

WED. FEB. 22 - 9AM Full line horse farm machinery, 8 work hgoreses, produce, etc. 8 miles S. of Williams-

SAT. FEB. 25 - Farm machinery, milking equip, farm truck for James H & Phebe Martin at Leinbach Auction, Shippensburg, Pa Cumb. Co. Andrew Martin, auct

**PUBLIC SALE OF VALUABLE REAL ESTATE 9.7 ACRES M/L WOODLAND SAT., JAN. 7, 1995 2:00 P.M.**

Located at 1565 S. Cocalico Rd., Denver, West Cocalico Twp., Lanc. Co. Take Rt. 272 N. of Ephrata to PP&L Building, turn left on Schoeneck Road thru Village of Schoeneck to sale. Watch for sign.

Real Estate consists of 1 1/2 story frame dwelling containing eat-in kitchen, living room w/insert for wood stove, bath, bedroom. 2nd floor has 2 bedrooms. Electric heat, well water.

1 car frame garage, large enclosed pavilion. 27 ft. round above ground swimming pool, situated on 9.7 acres woodland. Zoned R300.

10% down day of sale, balance at settlement.

OPEN HOUSE: Sat., Dec. 24 and Sat., Dec. 31 from 10:00 a.m. to 12:00 noon or by appointment. Call 717-336-6983.

Michael Kane, Atty.

**A**ri Pannebacker Auction Service Auctioneers Art & Barry

TERMS BY ROBERT W. WINGENROTH ESTATE

#AU001476-L • 717-336-6983

**HARRY RUDNICK AND SONS, INC. GALENA, MD 1-410-648-5601**

**MON., DEC. 19th at 12 Noon 42 HOLSTEIN DAIRY COWS**

This fine Holstein herd consists of 31 milking cows 8 dry cows & 3 springing heifers. Artificially bred by Atlantic Breeders Coop. Pregnancy examined, milking 49 lbs. average per cow per day. Herd is mostly young from 3 to 6 years of age. Good size and condition. 16 are first calf heifers freshened in the fall. Milking parlor trained, T.B. and bangs accredited with interstate papers available.

Consigned by

**CAREY FARMS, INC.** of Milford Del. to be sold in Galena, Md. at noon

Rudnick Auctioneers, Route 213, Galena, MD

**PUBLIC AUCTION Valuable Real Estate 30 Acres M/L Steer & Tobacco Farm THURS., JAN. 12, 1995 Auction Time 2 P.M.**

Location: 1022 Ridge Ave., Ephrata, (East Cocalico Twp.), from Ephrata take Rt. 272 North to Denver/Reamstown traffic light turn right onto Church St. towards Reamstown to stop sign turn right onto Reamstown Rd. to Ebersole Rd turn left to Ridge Ave. turn left onto Ridge Ave. to farm on left



Real Estate consists of 30 acres M/L with approx. 22 acres tillable land. Balance pasture w/spring fed pond. Brick & frame 2 1/2 story house w/1st floor large country kitchen, living rm. & family rm. 2nd floor 4 bedrms. 2 story frame bank barn set up for steers. Frame tobacco barn w/capacity for 6 acres of tobacco. Frame equipment shed. All buildings in good state of repair - Spacious 4 bedrm. home. Ideal property for family. Easy access to major roads. Terms: 10% down day of auction, balance on Feb. 21, 1995. For pictured brochure & info call auctioneers at 717-445-4309 or 717-733-1006. Inspection by open house on Sats., Dec. 24, 31 & Jan. 7 from 1-4 PM or by appointment call auctioneers at above numbers.

Terms by

**Allen Z. & Frances H. Hoover**

Auction conducted by Randal Kline, Lloyd Kreider Roy Good Jr. - Auctioneers AU2116L 717-445-4309



SAT. FEB. 25 - 9AM Complete liquidation at public auction. Willards Turkey Farm, machinery & operating supplies, tractors, farm equip, misc Located at 24900 Raven Rock Road James G. Cochran, auct.

SAT. FEB. 25 - 9 30AM Parksburg, Chester Co Full line farm machinery, 2 International diesel tractors, 1066 and 986, grain truck, cattle truck. By Omar and Dorcas Smoker. Steve Petersheim Auct.

SAT. FEB. 25 - 2PM 1 1/2 story brick and farm dwelling w/2 car garage attached. At West End of New Holland at 906 W Main St. Terms by: John Glick Robert E. & Jeffrey R. Martin, Randall L. Ranck, aucts.

TUES. FEB. 28 - 9AM Public sale of late model farm machinery and tractors Edwin Hornign and Sons, 248 Meadow Valley Rd., Ephrata, Lanc Co., Pa. Rentzel, Goodrich & Brown.

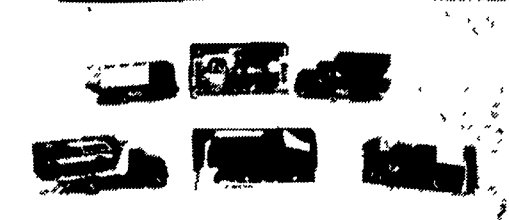
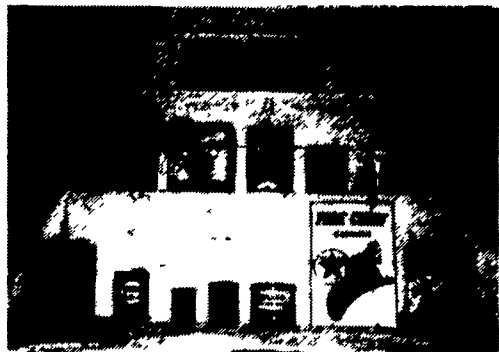
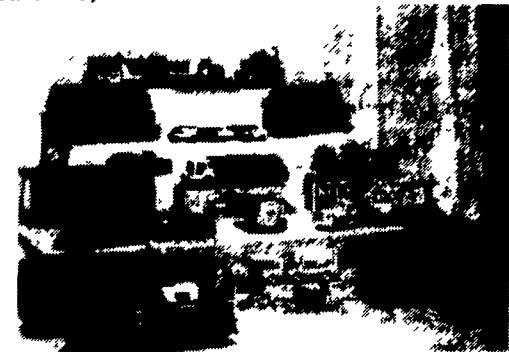
**MARCH**

WED. MAR. 1 - 6:30PM Winross trucks & toys. A&C Diefenbach Auction, Inc. 100 W. Jackson St., New Holland, Pa.

THURS. MAR. 2 - 9AM Farm machinery, hay, straw & corn silage. Take Rt. 222 4 mi. S. of Lanc, Pa. turn left on Gypsy Hill Rd to first farm right, or from Strasburg Rt. 741 to Rt 222 turn right 1/4 mile to Gypsy Hill Rd. By Spring-Belle Farm c/o Roger Mills Kreider, Kline & Good Aucts.

**★ OUTSTANDING TOY AUCTION ★ & GASOLINE ADVERTISING MEMORABILIA MONDAY, DECEMBER 26, 1994 9:00 A.M.**

LOCATED AT HARRY'S AUCTION 11 Graybill Road • Leola, PA (8 miles east of Lancaster, just off Rt. 23 in the village of Bareville). (PA Turnpike to exit 22, follow Route 23 West 12 miles to Bareville)



PEDAL TRACTORS: Farmall 560; Case-O-Matic; J D 60; J. D. 4450

FARM TOYS: Farmall - Plastic M with wagon (N.B.); 400 with split rims; 560 with Cab 404 (Bubble Pack); 1456 (Blue Box); 966; 682 Cadet; Combine; Grain Drill; Ford 4000 & 6000 (N.B.); M.F. 860 Combine (N.B.); Oliver Disc (N.B.); Tru-Scale Implements (N.B.); 1986 - 1990 Museum Sets; Toy Farmer; Collector Tractors & MANY MORE!

ERTL BANKS: #1-#10; Harley Davidson #1 - #3; Eastwood, Tru-Value; Amoco & many more! Texaco Airplanes.

HESS TRUCKS: 1964 "B" Mack; 1970 Fire Pumper; 1972 Tanker; 1975 & 1976 Barrel Vans; 1980 Training Van, 1982 - Present; Hess Funnel; Service Plus Tanker & Barrel Van; Wilco & Servco Trucks, Mayflower Truck, Hess Signs. (Approx. 60 Hess Trucks).

ERTL TRUCKS: Ertl Van Lines; Loadstar Tiltbed; I. H. Grain Truck; HaulPak Dumptruck; I. H. Scouts; Dumptrucks; Tru-Scale Trucks including Service Truck; R.O.E. Feeds.

NYLINT TRUCKS: Tournhauler; Michigan Crane; Cannon; Highway Emergency; U-Haul Sets; Hertz; American Tow Truck; Camper; Ladder Truck; Pepsi Truck. STRUCTO: Machinery Hauler; Chrome Construction; Ladder Truck; Tow Truck; Horse Truck; Livestock.

PRESSED STEEL: Tonka - Log Hauler; Livestock; Pick-up & Trailer Rescue Squad; Mobil Clam; Gasoline Tanker; Crane; Customized Pick-up Air Force Ambulance; Army & U.S.A.F. Jeeps; Chevron Stake Truck; AAA Tow Truck; Farms Truck; Dump Trucks.

BUDDY-L: G.M.C. Livestock Set; Camper; Texaco Tankers; Texaco Fire Engine; Coca-Cola; Sand & Gravel Truck; Horse Truck; Dump Trucks.

MISCELLANEOUS TOYS: G.I. Joe Spacewalk (N.B.); G.I. Joe Dolls & Army Jeep; Marx Basketball Game (N.B.); Wolverine Merry-Go-Round; American Flyer Train Set; Model Kits - Winross, Hubley, Roberts Trucks. Many more pieces being received to late for advertising.

**GASOLINE ADVERTISING TO BE SOLD AT 9:00 a.m.**

Numerous Cans, Signs, Radios; Tins; Dealer Awards; Oil Can Banks & Premiums including Sinclair; Texaco; Gulf; Qualer; Mobil & More.

FOR CONSIGNMENT INFORMATION CONTACT: Richard Harry at 656-2436 or 656-6107 (AU-1906) Randy Stoltzfus at 656-8919 (AU-2183)

**NO OUT OF STATE CHECKS**

\* AUCTIONEERS NOTE: All toys are sold without reserve. This is a large quality cataloged auction with approx. 500 lots. If you are considering selling 1 toy or a collection please give us a call. We have been conducting monthly toy auctions for the past 6 years. \*\*\* Please note Gasoline advertising will be sold first.

**\* AUCTION \* AUCTION \* AUCTION \* AUCTION \* AUCTION \* AUCTION \* ANNUAL PUBLIC SALE**

We will offer for sale the following tractors, farm equipment and furniture located 7 miles South of Martinsburg, WV -- OR -- 14 miles North of Winchester, VA off Interstate 81, Take Exit #5 (Inwood) Route 51 East approx. 3 1/2 miles East of Inwood, WV turn right at Shutt's Cash Grocery - .2 mile to sale.

**SATURDAY — DECEMBER 31, 1994 AT — 9:00 AM FURNITURE AT — 10:00 AM**

a good selection of farm tractors and new and used farm equipment including rakes, rotary cutters, balers, yard rakes, plows, elevators, disc, shop tools and other items too numerous to mention.

Oak china closet, dry sink, Oak server, dining room suite, breakfast set, chest of drawers, old radio, microwave stand, water bed, several bedroom suites, Oak chair, curio stand, Oak coffee table, like new Kelvinator refrigerator, TV, metal kitchen cabinets, metal shelves, elec. sewing machine, lawn furniture, 12 hp riding mower, 10 hp riding mower, mirror, floor lamp, swing set, dolls, carnival glass, iron skillet, dishes (some old), bed linens and tools.

TERMS: CASH OR GOOD CHECK. NOTHING TO BE REMOVED UNTIL SETTLED FOR. ID REQUIRED TO ACQUIRE A BIDDING NUMBER. ALL ANNOUNCEMENTS SALE DAY TAKE PRECEDENCE OVER ALL ADVERTISING.

Open Daily - Monday through Saturday 8 am until 5 pm Consignments Welcome No consignments taken on Sunday Bring a load - Buy a load - Trade a load EDGAR A. BOHRER, SR. - SALE MANAGER WV LIC. #18 EDGAR A. BOHRER, JR. - AUCTIONEER WV LIC. #1104 304-229-8354

NOTE: The furniture listed above is from 3 house lots including 2 estates one of which is the estate of Hazel Bohrer, Paw Paw, WV.

NOT RESPONSIBLE FOR ACCIDENTS ON PREMISES LUNCH RIGHTS RESERVED

\* AUCTION \* AUCTION \* AUCTION \* AUCTION \* AUCTION \* AUCTION \*