

# Agri-Women Hold Convention

TIGARD, Oregon — American Agri-Women celebrated their 20th Anniversary at this year's annual convention, hosted by Oregon Women for Agriculture,

Several of us worked together and finished in short order. Now my problem is getting a good idea for decorating the two tables that have been assigned to me. I think that I'll start with some of my own evergreens and holly plus red ribbon.

We expect to go to a Christmas tree farm for our tree. Last year we found that the fresh-cut tree lasted very long. Our tree will need to be a small one as I put it on a chest that faces a big window. First thing that I must do is empty the chest top of 15 pictures of family members. I hope that I can find an empty drawer to put them in temporarily. Things do seem to get rearranged over this season but we look forward to having a lot of company.

November 10-14. Participants from across the U.S. gathered to reflect upon the strength of AAW; a group that has grown from a few concerned farm wives to more than 50 state and commodity affiliates throughout the nation today, with the newest affiliate Ohio Holstein Women.

Ardath DeWall, AAWs current President stated, "Our members have celebrated our successful history and look forward to implementing our new strategic plan in 1995. Some of AAW's goals for the coming year are to implement new alliances, increase our efforts to inform all segments of our society about the economic significance of American agriculture and to become a potent force in shaping proactive policies for agriculture in the future. "In addition, two new national officers were elected; Jeraldine Mulkey from Monmouth, Oregon will serve as Sec-

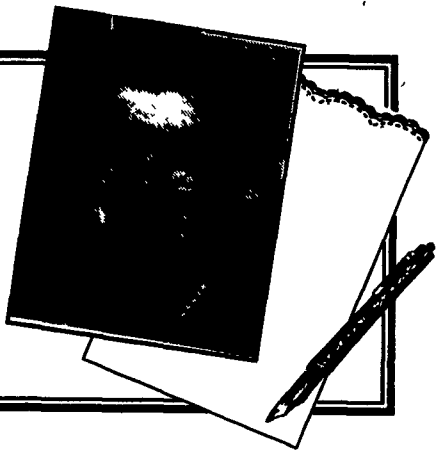
retary and Kathryn Alder of Melba, Idaho will be Vice President of Education.

Alston Chase, noted environmental writer and scholar addressed the group about the need for MW members to "become involved in shifting the nation's environmental policy away from an elitist, class war ideology toward a more scientifically sound and pragmatic approach that recognizes the significant role that humans have always had in shaping the landscape."

Dr. Fred Obermiller, an agricultural economist from Oregon State University and expert on land use stressed a need to break the "unholy trinity" of current environmental policy, by requiring mandated funding for new regulations and laws, requiring cost/benefit/risk analysis of new environmental proposals as well as fair compensation for any government "taking" of private property.

## Ida's Notebook

by  
Ida Risser



My living room is full of books and flowers. The impatiens and begonias have lots of red and bright pink flowers. It seems that every few days they need water as the bay window faces south and they get lots of sun. However, I do enjoy the bright colors all winter long.

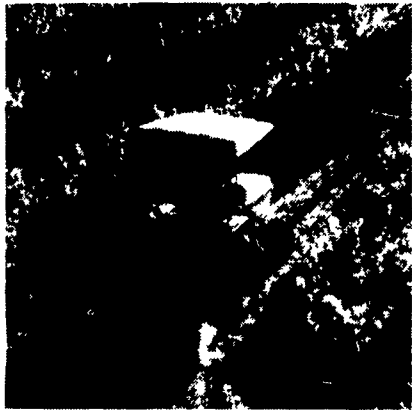
Now the books, magazines, and newspapers keep piling up as usual. As I love to read, I hate to throw them away before I've looked at them. Some sections of the Sunday paper never do get

looked at and eventually get pitched when we get visitors.

One reader of this paper sent me a book that she had enjoyed. And, a man from Massachusetts sent me a magazine about cranberry harvesting. Maybe after Christmas I'll get to reading it some more.

Speaking of Christmas, last week I helped to make 100 paper angels as favors for a banquet. We used gold crinkled paper and tiny gold beads for the head and hands.

# KUBOTA HAS YOUR SIZE



B2150HSD (18.0 PTO HP)



L2350DT (20.5 PTO HP)



L2900GST (25.0 PTO HP)

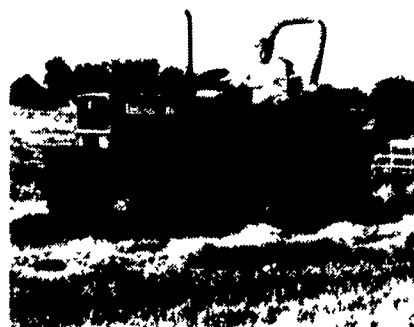
Kubota has a tractor that's just the right size for your vineyard, orchard, farm or ranch. Models range from 14 to 91 PTO horsepower. They feature Kubota liquid-cooled diesel engines, dependable hydraulics, and a standard 3-point hitch to let you attach a wide range of implements.

The B2150HSD is compact in size but has lots of power. Hydrostatic transmission, 4WD, and power steering make light work of loading, tilling or spraying.

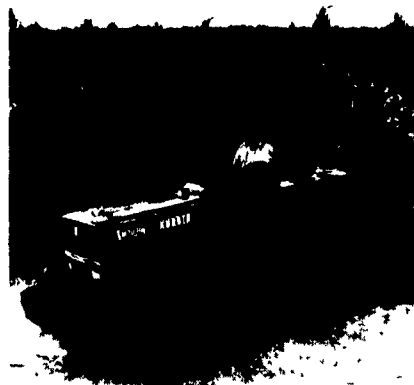
Economy and value are built into the L2350. Performance Matched Implements from Kubota include a rotary tiller, front loader, mower, snow-blower, backhoe and post-hole digger.

The new L2900GST features the innovative Glideshift Transmission. This provides clutchless shift-on-the-go operation, and smooth forward and reverse shuttle shifting.

Our M4030SU utility tractor specializes in



M4030SU (42.0 PTO HP)



M7030DTN-B (68.0 PTO HP)

doing just about everything. With a smooth powerful five cylinder diesel engine and 42 PTO HP, it can help you with planting, cultivating, or bringing in the hay.

The M7030DTN-B is our narrow tractor built to work between your trees or vines. Unique bevel gear 4WD gives you extra pulling power, and bi-speed turn provides the ability to make tight turns in narrow spaces. There are 16 forward speeds, ranging from creep at 0.25 mph to travel speed at 15.6 mph.

There are bigger models, and smaller ones. There are taller ones (mudders) and shorter ones (low profile). Your Kubota dealer can help fit the tractor that's just the right size for you.

Kubota Tractor Corporation markets a full line of tractors through a nationwide network of over 1,000 dealers



See Your Local Kubota Dealer

- |  |  |   |  |   |   |   |
|--|--|---|--|---|---|---|
| <b>PENNSYLVANIA</b><br>Avondale<br>THOMAS POWER EQUIP., INC.<br>215-268-2181 | Chambersburg<br>STOFFER BROS., INC.<br>717-263-8424          | Jersey Shore<br>THOMAS L. DUNLAP<br>717-398-1391                                | Mifflinburg<br>MIFFLINBURG FARM SUPPLY, INC.<br>717-966-3114   | West Chester<br>WENNER FORD TRACTOR, INC.<br>215-399-9615 | <b>MARYLAND</b><br>Hagerstown<br>ARNETT'S GARAGE<br>301-733-0515                        | Hainesport<br>MATERIAL HANDLING SYSTEMS<br>609-267-6100     |
| Bloomsburg<br>TRACTOR PARTS CO.<br>717-784-0250                              | Cochranville<br>STOLTZFUS FARM SERVICE, INC.<br>215-593-2407 | Honesdale<br>MARSHALL MACHINERY, INC.<br>717-729-7117                           | New Berlinville<br>ERB & HENRY EQUIPMENT, INC.<br>215-367-2169 | York<br>YORK TRACTOR, INC.<br>717-764-1094                | NEW JERSEY<br>Flemington & Clinton<br>PONIATOWSKI BROS. EQUIP. CO. INC.<br>908-735-2149 | DELAWARE<br>Newark<br>NEWARK KUBOTA, INC.<br>1-800-955-3031 |
|  | Elizabethtown<br>MESSICK FARM EQUIP. INC.<br>717-367-1319    | Lebanon & Lancaster<br>KELLER BROS. TRACTOR CO.<br>717-949-2000<br>717-589-2500 | Reading<br>NICARRY EQUIPMENT, INC.<br>215-928-2441             |   |   |   |

**TRUCKLOAD SALE**  
of Citrus Florida Fruit, Fish, Oysters and Shrimp  
**Melvin R. Petersheim**  
375 Old Dam Rd.  
Christiana, PA  
1 mile east of Nickel Mine  
**Dec. 22 7-7**  
**Dec. 23 7-4**

**BLACK ROCK'S Black Walnut Cracker**  
  
**EXTRA HEAVY DUTY!**  
Hand-Built in Lancaster County, PA  
Sturdy steel construction, maple handle and base.  
Weights 8.5 lbs, 3 1/2"W x 6 1/2"H x 24"L. Cracks the toughest nuts & is adjustable for nuts 1/2" to 2".  
Send check for \$29.<sup>95</sup> (Postage Paid) directly to the manufacturer: Black Rock Repair, 858 Pumping Station Road, Kirkwood, PA 17536. Allow 2 to 3 weeks for UPS delivery.

**All-Plant LIQUID PLANT FOOD**  
**9-18-9 PLUS OTHERS!**

- Contains 100% white ortho phosphoric acid. Made in USA.
- Non-corrosive. Won't settle.
- Top quality. Excellent service.
- Newest equipment.
- Financially sound... and growing!

**Big Demand Requires More Distributors!**

I sell to farmers. How do I become your distributor?  
 I'm a farmer. What's the price? Where do I get it?

**CALL or SEND FOR FACTS: Phone 814-364-1349**  
**ALL-PLANT LIQUID PLANT FOOD, INC.**  
821 State Rd. 511 N., RFD 3, Ashland, Ohio 44805