

Dismantling for Parts: Hundreds of farm tractors new and old several JD 2 cylinders also dozers and track loaders. Call for any part you might need. Atkins Tractor Salvage. Union WV 24983. Phone 304-772-3741.

DISMANTLING FOR PARTS: 4-108 Perkins and Ford 3 Cyl 201 Cid. Diesel Engines, S650G Satoh and 155 Yanmar Tractor, L553 New Holland and 342, 330, 440, Mustang Skidloaders. New and Used Parts for Kubota and Wisconsin Engines; Complete Repairs on Skidloaders Including Hydrostatic. GD Equipment (717)859-3533.

Electric oil boiler, Weil McLain P462; Air wench; 2 gallon medicator; 16 ton feed bin w/petition; 10' cold plate; Tahebo. 717-442-9492.

FARMALL 560, gas, NF, fast hitch, \$1,600 410-833-9091

FARMALL 656, gas, NF, fast hitch, 4,400 original hrs., 1 owner, clean Midwest unit, \$3,800 410-833-9091

Farmall A w/mechanical lift, lights and starter, tire chains and snow plow, \$1,575 Lancaster County. (717)336-2031

Farmall Cub w/Snow Plow, \$2500, JD 8300 Grain Drill, \$3500; Krause 12' Transport Disc, \$1500; Grain and Hay Elevator, \$450, (609)267-6071

Farmall part tractors, (6) F-20, 1020, 2236, W-30. Whole tractors only 717-246-1738, 717-244-6068

Farmall Super C w/fast hitch snow plow & tire chains, clean, \$2,375. Lancaster County. (717)336-2031.

Farmers = Dealers -- Your advertising pays for itself when you advertise your equipment in the farm equipment section 717-394-3047 or 717-626-1164

Fertilizer and Lime Spreader, Newton Crouch, 6T pull-type, ground driven, 16" chain, good condition, shed kept, \$1,450 OBO. (804)457-4530.

FISHING DISC Ford 14', y used 30 acres, \$50. 410-833-9091

Field Queen Forage Harvester w/Pickup and 3RN Cornhead, Blown 3208 Engine, For Repair or May Part Out. (412)667-8350.

FORD 2000, gas, 4 spd., \$3,200 410-833-9091

FORKLIFT PETTIBONE Super 6, 4x4, \$4,500 410-833-9091

FOR SALE: International offset disc, 23 1/2" disc, 8 feet wide, very heavy duty, very good condition, \$400 or make offer. Lehigh County (610)756-6626

FOR SALE: NI 213 spreader end gate \$900 NH 519 top beater \$1,200 NI 40' elevators PTO or gas engine \$500 and \$750 York County 717-456-5851

FOR SALE: Small farm equipment, plows, packers, discs, harrows, mowers, crimpers, tedders, rakes, etc Trade ins welcomed NH mowers, rebuilt and guaranteed, engines, hydraulics, crimper hookeys available. KIRKWOOD REPAIR, 550 Coopers DR, Kirkwood, PA 17536 717-529-3299 8AM-8:30AM.

Ford 532 baler HD thrower, \$900; Ford 503 rake 3pt \$350; (3)8x16 steel rack hay wagon, \$700-\$900; AC600 6RN Airchamp corn planter \$1500, Bearcat 12' roller harrow. OBO. 610/845-8629.

Ford 705 Snow Plow, Fits 2000 and 3000 Series Tractor and Others. \$800. (215)795-2281 Days.

BACKHOE JD 510, full cab, 1 owner, 2,900 hrs., standard hoe, \$11,000. 410-833-9091

Backhoe attachment for John Deere 450, 9300 series, \$2,000. (717)675-3328.

Baler: Hesston 4600, square w/thrower, excellent condition, shed kept, original paint, more heavy duty than any built for Case IH Must sell, \$4,900. (804)457-4530.

BELTING: We specialize in flat belting, cut to order, baler throwers, self unloading wagons, long table blower belts. Franklin Co. 717-263-0573. NO Sunday calls.

Belarus Tractor 420AN, 170 Hours, 57HP, Diesel, 4WD, All Options. \$11,000. (717)647-9020.

Bliss punch press, good condition; WA. Whitney angle iron shear, good condition. 717/328-2018.

Brillion 6R Minimum Til Cultivator, Brand New, Never in the Ground \$3900. (717)867-4896.

Brillion 21 foot, 6in, fold-up Cultipacker \$2,950. 321 Vicon Disk Mower Conditioner, \$3,900. Delivery Available. 717-534-1253.

Bush Hog 10' pull-type rotary mowers, \$3695. Taneystown Farm Equipment. 410/751-1500.

CARTNER Industrial Flail Mowers, 88" 3Pt Hitch, 74" Side Mounted, All Hyd. Driven. Excellent Condition. (410)836-1924.

CASE 1290 w/cab, 700 original hrs., 1 owner, 53 h.p., live PTO, 3 pt., excellent, \$7,800. 410-833-9091

CASE TRACTORS... 930; 500; IH 660; 560; 650; 600; WD9. All diesels. Farmall M; McCormick 15-30, both run nice. Belt pulleys for Case, IH, JD. New and used parts. Sales and Service. Reasonable rates. 5% off till 12/31/94. KING'S TRACTORS, 1426 Noble RD, Kirkwood, PA 17536.

Cardinal Sprayer w/35' Booms, New \$2495. Taneystown Farm Equipment. (410)751-1500.

Case 1835 Uni-loader \$7500; Case 90 loader, 6'-8' buckets, like new, \$3500. 717-733-2808.

DISMANTLING FOR PARTS: Case 450B dozer w/6-way blade, OROPS, good U/C. All parts available. BALANDA EQUIPMENT P.O. Box 407 RT 29 Palm, PA 18070. 1-800-322-8030

Front cut mower Toro Groundsmaster, 24 h.p., gas w/6' mower, runs well, \$3,500. 410-833-9091

Gehl Flail chopper model 72B, excellent condition, \$1500 203/546-6062 after 4pm.

Glenco 24' Field Cultivator, Buster Bar, Packer Hitch, Spare Parts and Teeth, \$1800 (717)867-4896

Great Plains 10' No-Til Drill, Excellent Condition, Grass Seed Box, Weight Brackets, New Discs. Reason for Selling: Buying Larger. (717)328-2336.

Green tomato grader: 36"W, 34 roller washer/waxer, 30' grading table, elevators. LanCo (717)548-2030.

HERCULES, CONTINENTAL Waukesha farm, industrial engine parts. M&M Surplus Sales, 807 Zeroga Avenue, Bronx, NY 10473, (718)828-9026; fax 828-9851.

HIGH TORQUE DIESEL STARTERS with 3 yr. warranty for most domestic tractors and select imports. With 6 month no risk money back guarantee. Call Gary D. Sneath at 1-800-622-7892

Ford 8N tractor in good condition. Evenings, (215)766-0479

For most any combine, grain and/or corn header, or self propelled choppers. Call Stephen. 717-249-2317

For Sale: John Deere 38" Fixed Wide Front End, Very Rare. \$1950. (515) 594-3767.

For Sale: Massey Harris 44, good condition. 717/437-3547 evenings, Montour Co.

For Sale: NH 306 V-type manure spreader, high sides, 1700 gal. capacity, flotation tires, 16mos. old, excellent condition Selling due to installation of liquid manure system, \$7500 OBO. 717/278-9562, 717/278-7135.

For Sale: Oliver HG68 crawler, \$1500. 717/543-5592 Mifflin Co.

For Sale: Two 2 row Holland transplanter, liquid fertilizer, John Blue pumps. 717/587-0364.

Howard Gem Rototiller, very good condition, \$2000 OBO. 410-239-8019.

IH 1066 Black Stripe fender tracker dual PTO, \$6,500. 717-532-8926.

IH 1066 cab, TA, dual PTO, dual hyd., runs good, \$7500, IH 1468, cab, bad TA, runs good, \$5500. 717/423-6719.

IH 1086, 2200 original hours, 20.8x38 radials, excellent condition; JD 3950 harvester, used 2 seasons, like new w/new set knives; 323 NI 1R corn picker, good. 717/369-5423.

IH 1086, CAH, 3,600 hrs., \$9,500. 410-833-9091

IH 1086, CAH, 3,000 hrs., recent engine, clutch & TA, 1 owner, \$11,000. 410-833-9091

IH 1086 Mechanic special Dual PTO \$4,900. 717-532-8926.

IH 1466, 135hp, dual outlet, PTO, 20.8x38 radials, mint condition, \$10,000 firm. (301)898-7426.

IH 1466, cab, dual hyd., dual PTO, runs good, \$5600; IH 986, dual hyd., dual PTO, runs good, \$5900. 717/423-6719.

IH 1468, V8 w/cab, twin shafts & outlets, TA, working air, 2,600 original 1 owner hrs., must see, \$11,500. 410-833-9091

IH 14' Disc w/Heavy Duty Cylinder, \$1500; IH 10' Grain Drill \$950; Hardi 80 Gallon 3Pt. Hitch Air Blast Sprayer, Excellent Shape, 2 Years Old. (610)696-2324, (410)848-8925.

IH 454, diesel, ready to work, 40 h.p., \$4,500. 410-833-9091

IH 600 Diesel Tractor w/PS, Good Running Condition, Very Good Sheet Metal, \$2500; Case DI, Good Condition, \$1250. (908)359-5934.

IH 656, diesel, utility, 5 spd, 65 h.p., good rubber, ready to work, \$4,800. 410-833-9091

IH 706D 2PTH NF, Need Rear Tires, Very Good Condition. \$4000. (717)328-2336.

IH 715 combine, 4RN corn head, 13' grain head. 400 bushel 1210A JD grain cart. 36' Westfield 8" auger Call John after 8pm, 908-534-6351.

IH 886, CAH, 90 h.p., \$8,000. 410-833-9091

IH 966 WF w/blade to push all that up coming snow! Call between 8am-9am, Steve Miller, (610)593-6112.

IH hydro 100 w/cab 540 and 1000 PTO, 18.4x38 tires, WFE, approximately 2,000 hrs, \$10,900. Krause 10' cutter chisel plow, model 1070, 7 shank, \$1,800. IH model 470 14' disc, \$1,500. (610)588-7142.

IH Roll guard came off 1466. \$275. 717-532-8926.

International 1066, WF, cab, asking \$8500 or best offer. Juniata Co. 717-463-2802.

Irrigation or Trash Pump: Mario 500 GPM, 55 PSI, 4" In and 4" Out, Diesel Powered, Low Hours, A1 Condition. Priced to Sell. (814)448-3300.

JD 1209 Mower Conditioner; Glenco 7 Hook Chisel Plow; JD 110 3Pt Hitch 9' Blade; JD BWA 11'6" Disc; AC 6-30" Row No-Til Planter; NH 1012 Bale Wagon; NH 275 Wire Tie Baler; Grimm Hay Tedder; NH Hay Rake; JD 8250 14X7 Drill; Cecilton, MD (410)889-1861.

JD 2840, Good Condition. \$8300; Pequea PTO Tedder \$875; White Forklift 6000LB. Air Tire \$3850. (610)777-4272.

JD 2955 tractor, cab, air, high-low, new rubber, 2WD, 3900 actual hours, used mostly for grinding, looks almost like new, none nicer! \$25,000 delivery available 304/772-3741 days, 304/772-5578 evenings

JD 3020, gas, tricycle, 2 outlets, syncro, \$4,500 410-833-9091

JD346 baler \$1,800. NI 3816 side throw slurry spreader \$4,000. Frangard spinner rake 13' \$2,800. (3) hay-rake wagons 1-\$200, 2-\$300, 3-\$700. Hesston Stakhand \$500. 200Ga field sprayer \$500 3pc crows foot cultipacker 17' \$500. (3) round bale feeders \$100pc (717)922-1739

JD 4020 D tractor WF, needs overhaul, \$5,000. IH 4 bottom rollover plow, \$1,500. Call evenings, (302)378-9164.

JD 4020, diesel, WFE, power shift, nice, \$7,500. 410-833-9091

JD 4020, WF, 4100 original hours, hard-to-find clean original tractor, \$6900. Taneystown Farm Equipment. 410/751-1500.

JD 4020 w/148 loader, \$9,250. 410-833-9091

JD 4320, std. shift, side console, hyd \$9000. Call after 5PM. 717-925-5152.

JD 4400 Diesel Combine, Rotary Screen, Cab, Air, Grain Platform, 4RN Corn Head, \$10,000. (304)725-8158 or (304)725-4682.

JD 4420 combine, 213 flex, 443 corn head, excellent condition. (717)786-1587.

JD 4430, quad, CAH, very clean, \$13,500. 410-833-9091

JD 5020, fender from Midwest, 140 h.p., 3 pt. PTO, 50% rubber, \$6,850. 410-833-9091

JD 630 3pt, PTO, P/S, A-1, new paint, plows \$5,200 OBO NF Mifflin County. (717)248-7447.

JD 6600 Side Hill Combine, 6RN corn head, 13' flex head 717/862-3213, 717/927-9483

JD 6620 Sidehill Hydro, Dial, Chopper, 4X4, 2200 Hours, Sharp, \$24,500; IH 7110, Cab, Air, 18.4 Radial Duals, 1700 Hours, Sharp \$35,000 (517)593-2547.

JD 750 no till drill, used 2 seasons, \$13,500. Franklin Co. 717/762-3403 or 717/739-6632, No Sunday Calls.

JD 830 electric start w/PTO; JD GW, G, unstyled G. Evenings or leave message. 717-222-4432.

JD H, excellent condition w/original plow, \$3000 OBO. 703-722-4784.

JD L tractor, pulley, new tires, rebuilt engine, plow, cultivator, completely rebuilt center mounted mower. 717-698-5601.

JD R tractor, excellent running condition, good sheet metal, good tires, \$3,400. 717/448-9223.

LOADER TRACTOR KUBOTA L2550 w/BF400 loader, 400 hrs., nice, \$11,500. 410-833-9091

LOADER TRACTOR JD 650, 4x4, 900 hrs. w/loader & mower, \$10,500. 410-833-9091

LOG SKIDDER Pettibone, 45 h.p., blade, winch, new rubber, \$4,500. 410-833-9091

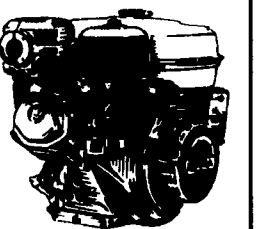
Loader Attachment JD 146 w/valve & wide bucket, \$2,900. 410-833-9091

Louisville Ford w/534 engine, 10-ton lime spreader w/air operated booms. Work lease transferrable to buyer. 610/857-5692.

MANURE SPREADER NH 516 w/upper beater, works well, \$1,200. 410-833-9091

McDeering 22-36 steel wheels, nice; W-30 on factory rubber, runs, restorable. 717-246-1738; 717-244-6068.

HONDA ENGINES
Replacement Power You Can Trust



G100	2 2 HP	\$228.00
Gx120	4 4 HP	\$283.00
Gx160	5 5 HP	\$299.00
Gx270	9 9 HP	\$484.00
Gx390	13 13 HP	\$573.00
Gx610	18 18 HP	\$886.00
Gx620	20 20 HP	\$992.00

All Unites Have "Oil Alert" Except 2.2 HP
Postpaid
Pa. Residents Add 6% Tax - Send Check With Order To:

Blue Mt. Small Engine Serv.
Three Sq. Hollow Rd. Newburg, PA 17240
717-423-5358
Let Phone Ring 10 Times

IH 966 Black Stripe, Cab Must See
IH 966 \$8300
IH 1066 w/Cab \$9500
IH 1466 w/Cab \$9500
JD 4020
IH 966 Coming In
IH 966 w/Cab Coming In

- Brillion 10' Sure Seeder w/Hydraulic Wheels Like New
- Roll Bar for 4020 \$295
- Farmhand Quick Tach Loader \$2850
- Vermeer 605A Round Baler \$2500
- JD 430 Round Baler \$9850
- NH 310 w/Thrower Must See
- Ford 520 Compact Baler \$795
- Woods HD 315 Batwing Will Deal
- 5) Manure Spreaders from \$750
- 3) IH 510 Grain Drills from \$1200
- 6) Cultimulchers from \$1650
- 6) Disc Chisels from \$2500
- 5) Hydraulic Fold Wing Discs from \$1950 to \$4250

Lots More Equipment Here & Coming In
Seasons Greetings to ALL Our Friends and Customers
THANK YOU FOR THE BEST YEAR YET
MARSHALL EQUIPMENT
Rt 85 Beyer, PA
(412) 783-6333

John Deere tractor and engine parts, newer than two cylinder. JD, IH, Oliver plow parts. We ship. Nelson Parts, Penn Yan, NY, (800)730-4020.

KUBOTA G5200, diesel, lawn tractor, 2WD w/48" mower deck, excellent condition, \$2,950 410-833-9091

LEAF COLLECTOR Toro w/12 h.p. Kohler & hyd. dump, pull-type, dumps 8', \$500. 410-833-9091

Little Giant 36' elevator w/motor, \$825; Brillion 10' & 9' packers, nice; Farmall H tractor, \$875. 610/562-4464.

LOADER ATTACHMENTS New Du-Al, fits all makes & models, 20% off 410-833-9091

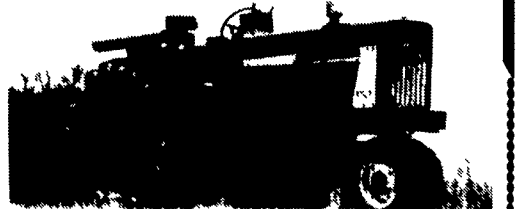
LOADER ATTACHMENT IH 2050 w/bucket, very clean, \$1,500 410-833-9091

LOADER ATTACHMENT JD Industrial for JD 401 tractor, wide bucket & valve included, \$2,500 410-833-9091

LOADER ATTACHMENT MF 236, \$2,950 410-833-9091

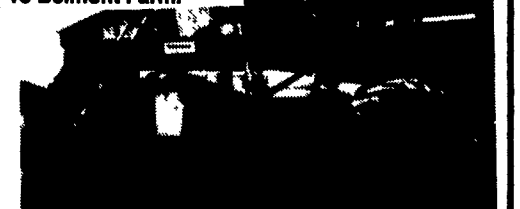
LOADER TRACTOR JD 301A, diesel, 3 pt, PTO, \$6,200. 410-833-9091

Take Exit 20B Off Of 83, 5 1/2 Mi. West To Belmont Farm.



Farmall 656
Gas, FH, 4400 Orig. Hrs., Nice
\$3,800
410-833-9091

Take Exit 20B Off Of 83, 5 1/2 Mi. West To Belmont Farm.



Case 400
w/Farm Hand Loader
\$2,800
410-833-9091

COWAN EQUIPMENT
Martinsburg, PA
814-793-4293 Day or Evening

Wanted: Fly Wheel & 3 Pt. Hitch Complete For JD 730 Diesel

- JD 5400, 4x4 chopper
- NI 802, 4x4 w/chopper
- NH 1895, 4x4 chopper
- JD 6600 combine w/4 row head
- Gleaner F model combine
- JD 4755, cab & air, 4x4
- JD 3155, cab & air, 4x4
- JD 2555
- JD 4430, cab & air, quad range
- JD 4430, 4 post, power shift
- JD 2030 w/loader
- JD 2950, cab & air, 4x4
- JD 2950, cab & air
- JD 2940, cab & air, 4x4
- JD 2750
- JD 2550, cab & air
- JD 2350
- JD 4640, cab & air, power shift, '82 model
- JD 4440, cab & air
- JD 3155, cab & air, 4x4
- JD 2755, 4x4
- JD 2640
- JD 4020 power shift, dual hyd., '72
- JD 3020, diesel, side console, '72
- JD 520
- JD 310, backhoe & loader
- Ford TW25, cab & air, 4x4
- Ford 9700, cab & air
- Ford 7000
- Ford 6600
- White 2-70, red stripe
- White 2-105, cab, 4x4
- NI 325 corn picker, 12 roll bed
- NI 325 corn picker, 8 roll bed
- NI 324 wide row picker
- JD 443 corn head
- JD 4 row narrow conversion corn head
- Gleaner 430 corn head
- White 1730 QT loader
- JD 260 loader
- JD 158 loader
- Miller 14' offset disc
- Axle mount duals for IH 38".....\$650
- Roll guard for 2950.....\$650