

1-1980 Great Dane open top trailer
45 ft. 13'6" high with cover
1-Van trailer with live floor
Call 717-438-3354

EXCELLENT WORK TRUCKS



'94 FORD F350 DUALY
Crew Cab, 460 Gas, Auto,
Was \$32,220 Now \$26,300



'94 FORD F350 DUALY
Turbo Diesel, 5-Speed, XLT-Nice Truck
#4997

SHEEHY LEBANON

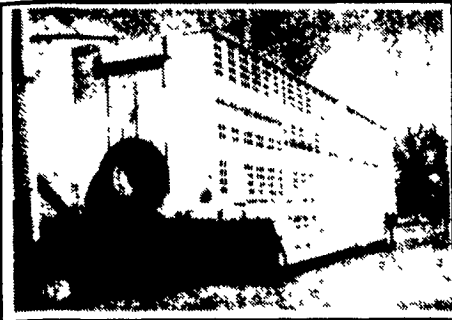
FORD • MERCURY • LINCOLN

20TH & CUMBERLAND STS • RT. 422 WEST

**Melard's Truck
& Auto Sales**

955 East Main Street
Ephrata, PA 17522
(717) 738-4870

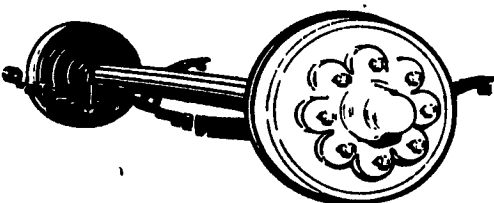
- 1994 Chevy Astro, CL, Brown, 4x4 V-6, Auto, Dual, Air & Heat, Elec. Windows & Locks, Dutch Doors, Cruise, Trailer Package, Tilt, 15,000 Miles.....\$19,900
- 1988 Plymouth Grand Voyager, V-6, Auto, Air, Tilt, Cruise, Elec. windows & Locks, Privacy Glass, 84,000 Miles, Black with Wood.....\$7,500
- 1991 Ford Aerostar XLT, All Wheel Drive, Auto, Air, Cruise & Tilt, Elec. Windows, Locks, Dual Air & Heat, 48,000 Miles, Black & Silver
- 1993 Grand Prix SE, 4 Dr., 3.1 V6, Auto, Air, Cruise, Tilt, Elec. Windows & Locks, Black: \$12,900
- 1993 Ford Aerostar XLT 4x4 4.0, Auto, Air, Cruise, Tilt, AM-FM Cass., Elec. Windows, Locks, 30,000 Miles, Privacy Glass, Black..\$16,600
- 1992 Grand Voyager LE, Dual Air & Heat, Elec. Windows & Locks, Cruise, Tilt, Cass., Privacy Glass, Blue, 58,000 Miles.....\$14,000
- 1992 Grand Prix SE, 2 Dr., Loaded, Elec. Windows, Locks, Seat, Cruise, Tilt, Black, 41,000 Miles.....\$10,900



1976 Merrit 48' Double Deck Pot
Extra Nice for Year \$8,500

Winchester, VA.
Call - (703) 662-0057 - Day
(703) 888-3708 - Night

**SEE US FOR YOUR
AXLE REPLACEMENT
PARTS AND COMPLETE
AXLE ASSEMBLIES**



2,000-22,500 Lb. Axles &
Suspensions
Metal Trailer Components
Lights & Electrical Supplies
Brakes, Tires & Wheels
Jacks, Couplers & Hitches
Hardwood Accessories &
Much More

Check Our Prices On
Receiver Hitches!

Buy Where The Quality Is
#1 At The Right Price -

Ask For Dean At:

**BINKLEY & HURST
BROS. INC.**

133 Rothsville Station Rd. • Lititz, PA 17543
Phone: 717-626-4705

'91 Ford XL E350 club wagon, 15 passenger, 351 EFI, auto, PB, PS, dual air, AM-FM cassette stereo, new radials, 49,000 miles, dark blue, \$11,500. 717-733-2873

'91 Ford F150 Super Cab, 300 EFI, auto, PS, PB, air, AM-FM, dual tanks, 6,250 GVW, 37,000 miles, dark blue, \$11,900. 717-733-2873

'90 Dodge LE 250, 1/2 ton, 318 EFI, auto, PB, PS, PW, PDL, cruise, tilt, air, AM-FM cassette, 7,400 GVW, 2 tone brown, 1 owner, excellent condition, \$9,600. 717-733-2873



AUTO BODY & SALES

1701 B Division Hwy.
New Holland, PA • 717-355-0644

Specializing in
Rebuilt
Collision
Damage Vehicles



'92 F-150 XLT Lariat
Ext. Cab Short Box, 302, 5
Spd., Tilt, Cruise, PW, PDL
\$6,500



'89 Chevy C-1500 4x4
4.3L, 5 Spd., Cloth Int.,
77,000 Mi., Runs & Moves
\$4,900



'89 Ford Ranger 4x4
Longbox, V-6, AT, PS, PB,
Cloth Seats, Needs Front,
84,000 Mi
\$4,200.

'94 Ford Ranger XLT
Ext. Cab, 2.3L, 5 Spd.,
AC, 11,000 Mi.
\$5,800



(800) 533-3837

YOUR DIRECT LINE TO GENUINE GM PARTS

When you call the number listed above you'll reach our wholesale parts specialists, who can help you keep your GM repair work moving quickly. Ask About:

- Specializing in GM Medium Duty Trucks, Current and Obsolete.
- \$500,000 Parts Inventory
- Parts Locator For Those Hard To Find Items
- We Ship Anywhere. Local Delivery Available.
- Experienced, Knowledgeable Personnel.



(717) 432-9697

Quality Dealer Since 1921
406 U.S. Route 15 • Dillsburg, PA 17019



Mr. Goodwrench

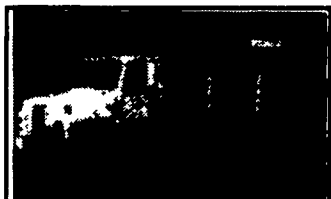
**MARTIN'S USED TRUCKS
& EQUIPMENT INC.**

560 Lampeter Rd., Lancaster, Pa. 17602
(717) 392-6266 (717) 299-6200

Ask For ROB MARTIN JR.



1980 Int'l 1954 - 3208 CAT- 5+2 - Hydraulic brakes, P/S, Central Hydraulic-9 ft. DUMP BED-in very good condition no rust



1988 Int'l 1754 - DT360 - 5+2 - 25,500 GVW (no CDL) New Paint Truck in Excellent cond. Inspected - New rubber, will take a 16 ft. body



1982 MACK F600 - 300 HP-5 spd. - P/S-A/C-air ride suspension sliding fifth wheel. No rust - truck in Exc shape \$5,800; also (2) S/S - 2 comp 5800 gal. Milk trailers \$2500 & \$8500.



1983 GMC Brigadier Truck Tractor- 238 Detroit-10 spd-11R/22.5 high tread, differential lock, 111,000 mi. on truck, inspected-very clean truck



1984 GMC Brigadier Truck Tractor - 240 Cummins-7 spd.-176,000 mi., in very good cond. (would make a nice dump truck)



1983 MACK - R658ST- 350 HP motor, 15 spd Fuller, 11R22.5 high tread - P/S-air ride cab-sliding fifth wheel, low mileage, good looking truck, good for hauling heavy equipment



1977 IH 1950 - 466-5+2-P/S-A/B - 35000 GVW-good for a 20 to 22 ft. body \$4000.00



Truck Body's Refrigerated & Dry Vans - 10 ft. to 42 ft., Good for storage or over the road-Free delivery within 10 miles. \$250 and up



1973 F350 Ford Utility Truck - 300-6 cylinder-4 spd truck is inspected and in nice shape \$1850.00

Royal Truck & Equipment, Inc.

6910 Route 309 Coopersburg, PA 18036

(610) 282-4090
(800) 283-4090

Just Off I-78, Between
Allentown & Quakertown
Financing Pre-Approved



1988 Ford Club Wagon XLT,
12 Passenger,
V-6, AT, Loaded, Very Clean,
Must See to Appreciate



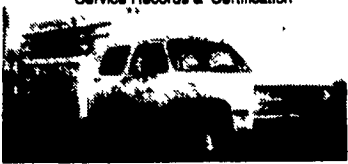
1989 Ford F350 9' Open Utility With Racks,
Rebuilt 351 V8 AT, PS, PB, AC, AM/FM, Lease
Maintained With Service Records, Very Clean &
Ready To Go To Work



1981 GMC Top Kick 2300 Gal. Pressure Vac Tk,
Haz Mat Certified, Carbon Steel Tank, Rollbars,
Extra Hose, Cat 3116 Dsl Eng 215 HP With Only
16,000 Orig Miles, 6 Spd Trans, 32,200 GVW, Air
Brks, AC, TK & Tank Are In Excellent Cond With
Service Records & Certification



1980 Ford F150, 4x4 Pickup, Auto, V8, PS, PB,
AC, Honeywell, 110 V Gen., Dual Fuel Tanks,
HD Towing Pkg., 3 Tool Boxes and Alot More
Fleet Maintained With Records



1987 Chevy 4x4 1 Ton Enclosed Utility Crew
Cab, V8, AT, Fr. Mount Winch, Utility Co. Owned
& Maintained From New, Very Clean



1991 Chevy 3800 HD, 12' Stake Body with
Gates and a 1800 Lb. Lift Gate, 454 V8 AT
With OD, PS, PB, AM/FM Very Very Clean,
Fleet Maintained With Records

**TWO ACRES OF ALL TYPES USED TRUCKS.
"IF WE DON'T HAVE IT, WE'LL GET IT"**