

ASC Elections Next Fall

LANCASTER (Lancaster Co.) — This year's election for positions on the Lancaster County Agricultural Stabilization and Conservation (ASC) Committee, which were to be held in December, are being rescheduled to accommodate changes brought on with last month's enactment of the law to reorganize the USDA.

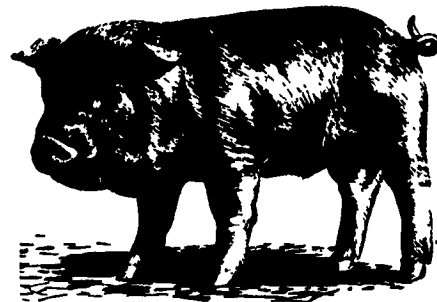
According to Paul B. Kline chairperson of the Lancaster County ARC Committee, the change in the election schedule is nationwide and is authorized under regulations

issued by USDA. Current members of ASC committees will continue in their posts until the new election is held next fall.

The law, which reorganized USDA, created a new Agency—the Farm Service Agency (FSA)—which encompasses all of the commodity support and basic conservation programs of the former Agricultural Stabilization and Conservation Service (ASCS), all of the risk management programs of the Federal Crop Insurance Corporation (FCIC), and the farm lending activities of the Farmers

Home Administration (FmHA).

Kline said the new committee system, when fully implemented, will exercise increased responsibilities in its enlarged role. "Rescheduling the elections on a nationwide basis avoids confusion which could occur from hastily drawn rules and regulations," Kline said, "and will create efficiencies by using funds which would have been spent on this year's election process to be used in training committees in performing their added duties."



BUY, SELL, TRADE OR RENT THROUGH THE CLASSIFIED ADS

PHONE: 717-626-1164 or 717-394-3047
FAX 717-733-6058

Mon., Tues., Wed., Fri. 8 AM to 5 PM; Thurs. 7 AM to 5 PM

1a CONSTRUCTION EQUIPMENT

1967 Wisconsin 20 ton tag trailer, tilt bed, \$2,500. Franklin County. (717) 597-7403, (717) 597-4885.

1971 IH 500-C 6-way Dozer \$6900/BO; 1970 JD-450 6-way Dozer New Chains \$9900/BO; (609) 466-2953.

1993 Gehl 4625 skid loader, 47hp Kubota diesel, 275 hours, aux. hyd., \$12,900. 717/949-3582.

(2) Model 40FC JD Crawler Dozer, 1) Complete, 1) 90% \$3000 OBO. (717) 589-7408.

AC 7000# forklift, propane, PS, side shift, triple mast, 15' lift, \$6900. 717-345-4882.

Allis Chalmers HD7G crawler loader w/ripper, 75% U/C, good condition, \$8,500. (610) 767-3293.

CARTNER Industrial Flail Mowers, 88" 3Pt. Hitch, 74" Side Mounted, All Hyd. Driven. Excellent Condition. (410) 836-1924.

CAT 955L, S/N 8568728, low hours on engine rebuilt \$17,000. Evenings, (717) 658-6529.

DISMANTLING FOR PARTS: CAT 977L w/good bucket, good U/C, OROPS. All parts available. BALANDA EQUIPMENT P.O. Box 407 RT 29 Palm, PA 18070. 1-800-322-8030

Irrigation or Trash Pump. Marlo 500 GPM, 55 PSI, 4" In and 4" Out, Diesel Powered, Low Hours, A1 Condition. Priced to Sell. (814) 448-3300.

JD Model 3325 logging winch, fits almost all 450 JD dozers & loaders, complete & ready to go, \$3500. Shipping available. 304/772-3741 days, 304/772-5578 evenings.

DISMANTLING FOR PARTS: Case 450B dozer w/6-way blade, OROPS, good U/C. All parts available BALANDA EQUIPMENT P.O. Box 407 RT 29 Palm, PA 18070. 1-800-322-8030

CAT D4d Angle Blade and Ripper, Low Hours; John Deere 2010 Dozer 6-Way Blade and Ripper. (703) 837-1428.

Cat tow motor, 5000lb., LP gas, model T50B, triple stage mast, \$5500. 717/354-3105.

FOR SALE: 1978 17 1/2 ton Pettibone hydraulic truck crane 450, gas engine, \$7,500. Carrier needs minor work. No leaks, 55 ft. boom. Also older Loroen converted truck cranes, reasonable. Phila. area. (215) 423-6394 days; nights (215) 744-4250.

FOR SALE: 450 John Deere loader, good condition. (717) 733-3826.

Forklift Wholesalers 2000 to 92000 Lb. Lifts Available. 70 in Stock. Sale-Rental-Finance w/ Warranty. Chalk Equipment. (410) 686-6800.

Ingersol Air Compressor, 10hp, w/tank, \$1600. 717/354-3105.

DISMANTLING FOR PARTS: Case 450 early S/N Loader, good final, good U/C. All parts available. BALANDA EQUIPMENT P.O. Box 407 RT 29 Palm, PA 18070. 1-800-322-8030

P.O. Box 407 RT 29 Palm, PA 18070. 1-800-322-8030

DISMANTLING FOR PARTS: Case 780CK w/4-in-1 bucket, extendable, 336 diesel. Many good parts available. BALANDA EQUIPMENT P.O. Box 407 RT 29 Palm, PA 18070. 1-800-322-8030

Oliver OC12, 75% U/C, runs good, lots of new parts, asking \$4,500 OBO. (610) 488-1564.

Hyster forklift, 3000lb., LP, solid tire, \$3250. 717/354-3105.

CLETRAC BULLDOZER



Oliver Cletrac Bulldozer AG-6, wide gauge model with Anderson dozer attach, side mount mower, good condition, low engine hrs.....\$5,900 OBO
Roadscraper, pull type, 176" wheel base.....\$950
LEE BROS.
CRANBERRY FARM
609-726-9292 Days 609-726-1214 Evenings

FORKLIFTS

2,000 TO 15,000 LB
\$1,000 TO \$12,000
GAS/LP-DIESEL-ELECTRIC
Cushion-Pneumatic-Rough Terrain
New Komatsu Forklifts Available
PA INDUSTRIAL EQUIPMENT
(610) 326-7090



Route 206 North, P.O. Drawer E
Newton, NJ 07860 (201) 383-3370
Outside NJ 1-800-545-1278
Toll Free NJ (Parts) 1-800-372-9207
JD FINANCING AVAILABLE TO QUALIFIED BUYERS
FAX: 201-383-5756

CRAWLER DOZERS

1986 JD 350D 6 way, 730 hrs.....\$21,000
1980 JD 450C, 6-way blade, rebuilt engine.....\$20,000
1986 JD 450E, 6-way blade, 1600 hrs.....\$26,000
1988 JD 450G 6-way, 215 hrs.....\$43,000
1987 JD 750B w/ROPS, 2480 Hrs.....\$42,000

WHEEL LOADER BACKHOES

1987 JD 210C, ROPS, Low Hours.....\$26,000
1983 JD 301A Loader, 3pt Hitch, Clean.....\$10,000
1988 JD 310C w/cab.....\$27,000
1993 JD 310D, cab, 4x4, ext. dipper.....\$50,000
1974 JD 410 w/cab.....As is \$8,000
1986 JD 410C cab, 4x4.....\$32,000
1986 JD 410C w/cab, ext. dipper.....\$29,500
1967 JD 500, good condition.....\$8,500
1985 JD 515B with cab & side shift Backhoe aux. Plumbing...\$19,500
1985 MF20D 3pt. Hitch Backhoe, York rake, 988 hrs....\$13,000

ATTACHMENTS

JD forks for 350 loader.....\$1000
93A Backhoe.....\$3,500
9300 Backhoes, Good Condition.....\$4,500

SAKAI
TRAIL KING
TRAMAC
MUSTANG



Want To Buy
John Deere
Equipment -
Any Model

1a CONSTRUCTION EQUIPMENT



Cat 966E 1988 9946045, nice, 6,900 hrs. \$89,000 \$87,000.



Hyster 30' Platform Lift, 7 1/2 x 13 1/2 platform \$5,500 \$4,900



1985 JD 510B Turbo Tractor/Loader/Backhoe \$10,900 \$18,500



'87 JD 655B GP Bucket with Teeth U.C. 50% \$22,000 \$30,000



1981 Ford 555 Diesel Tractor Loader Backhoe \$12,500



84 Case 1455B, 3000 Hrs., w/Ripper, New Pins & Bushings & Sprockets \$24,900 \$22,500



'88 Case 1155E, 4200 hr, Fair U.C. \$31,000 OBO



'83 Cat 963 GP Bucket with Teeth, Cab \$42,000 \$40,000

We Buy & Sell • Financing Or Lease Purchase Available

AA Equipment

1797 Robert Fulton Hwy., Quarryville, PA 17566
717/529-2512
No Sunday Calls

TRAILERS & TRUCKS

1985 Eager Beaver 20HA, 20 Ton Tag.....\$5,500
1978 Eager Beaver 18HA, 18 Ton Tag.....\$4,850
1968 Mack R Tractor 237/5 Speed.....\$5,500
Mighty Mover landscape Trailer, 2 axles, long bed.....\$1,200

WHEEL LOADERS

(2) 1980 Case W20 2 yd.....\$25,000/ea.

CRAWLER LOADER

1978 JD 555.....\$15,000
1980 JD 555, ROPS, 4&1 bucket.....\$14,000
1981 JD 555, ROPS, 4&1, B/H mounting, clean.....\$24,000

HYDRAULIC EXCAVATORS

1992 JD 70D w/blade, long stick.....\$52,000
1989 JD 490D, 160" ~~SOLD~~.....\$53,000
1987 JD 790, V.G. U/C, aux. plumbing.....\$57,000
1986 JD 490, clean.....\$42,500
1989 JD 690D 4200 hrs., v.g. cond.....\$72,000

AGRICULTURAL & MISCELLANEOUS

Excel 340 mower, diesel engine.....\$6,500
Toyota skid steer loader buckets.....POR
RM Demco Sprayer, like new, 3 pt. 21' Boom.....\$1,000
JD 603 rotary Cutter.....\$700
3 Yd. 444E Material bucket, new.....\$2,400
Stanley MB 125 hammer, low hrs.....\$3,500