

Indiana Hogs

LOUISVILLE, KENTUCKY
THURSDAY DECEMBER 08, 1994
INDIANA-OHIO DIRECT HOGS
FLASH
BARROWS AND GILTS: MOSTLY 50 LOWER; DEMAND MODERATE. PLANTS WEAK TO .50 LOWER. COUNTRY: PLANTS: US 1-3 230-260 LBS. 27.50-28.50, 28.50-30.00, FEW 29.00. FEW 30.75. US 2-3 230-260 LBS. 24.00-27.00 210-230 LBS. 23.00-25.50
SOWS: MOSTLY STEADY.
US 1-3 300-500 LBS. 14.00-17.00
500-650 LBS. 16.00-18.00, FEW OVER 650 LBS. 19.00-20.00. PRELIMINARY ESTIMATE: **38,000
***RECEIPTS HAVE CHANGED DUE TO CHANGE IN REPORTING BASE.
THIS REPORT PREPARED BY THE LOUISVILLE, KY. OFFICE OF THE USDA LIVESTOCK AND GRAIN MARKET NEWS SERVICE--502-582-5287 CJC 1100E

New Holland Feeder Pigs

New Holland, PA
Wed., December 8, 1994
Report Supplied by Auction
TODAY: 701 HEAD
LAST WEDNESDAY: 974 HEAD
LAST YEAR: 1035 HEAD
TREND: COMPARED TO LAST WEDNESDAY, FEEDER PIGS STEADY. AROUND 50% OF SUPPLY SOLD FOR SLAUGHTER. ALL PIGS WEIGHED ON ARRIVAL AND SOLD BY THE HUNDRED WEIGHT.
GRADE 1-2: 87 HEAD 31-39 LBS. 62.00-76.00, WEIGHTED AVERAGE 36.54, WEIGHTED PRICE 67.10; 65 HEAD 40-48 LBS. 56.00-64.00, WEIGHTED AVERAGE 44.85, WEIGHTED PRICE 58.84; 114 HEAD 50-56 LBS. 54.00-62.00, WEIGHTED AVERAGE 51.53, WEIGHTED PRICE 57.60; 33 HEAD 66-67 LBS. 50.00-60.00, WEIGHTED AVERAGE 66.45, WEIGHTED PRICE 36.83.
US#2: 4 HEAD 40 LBS. 48.00, WEIGHTED AVERAGE 40.00, WEIGHTED PRICE 48.00; 36 HEAD 51 LBS. 46.00, WEIGHTED AVERAGE 51.00, WEIGHTED PRICE 46.00; 19 HEAD 83-103 LBS. 33.00-46.00, WEIGHTED AVERAGE 94.42, WEIGHTED PRICE 37.61.
SLAUGHTER: 229 HEAD 14-29 LBS. 66.00-90.00, WEIGHTED AVERAGE 21.57, WEIGHTED PRICE 81.28.

Diffenbach Auction Center

New Holland, Pa.
Monday, December 5, 1994
Report Supplied by Auction
TOTAL LOADS: 73.
ALFALFA: 60.00-122.00.
MIXED HAY: 80.00-155.00.
TIMOTHY: 67.00-130.00.
ORCHARD GRASS: 97.00.
STRAW: 105.00-150.00.
EAR CORN: 60.00-67.00.
FIREWOOD: 10.00.
SOYBEAN STUBBLE: 20.00.
WOOD SHAVINGS: .50 BAG.

Good's Hay

Leola, Pa.
Wed., December 7, 1994
Report Supplied by Auction
TOTAL LOADS: 106.
MIXED HAY: 62.00-145.00.
STRAW: 65.00-160.00.
ALFALFA: 61.00-136.00.
TIMOTHY: 90.00-145.00.
GRASS: 90.00-117.00.
CORN: 65.00-67.00.
CORN FODDER: 47.00.
SOYBEAN STUBBLE: 25.00.

Keister's Hay

Middleburg, PA
December 6, 1994
Report supplied by auction
82 LOADS, 51 LOADS OF HAY.
ALFALFA HAY: 75.00-125.00.
MIXED HAY: 50.00-130.00.
TIMOTHY: 95.00-105.00.
STRAW: 75.00-105.00.
EAR CORN: NEW 55.00-60.00, OLD 60.00-70.00.
FODDER: 60.00.
OATS: 2.50 BU.
FIREPLACE WOOD 125.00-140.00 LOAD.

Green Dragon Hay

Ephrata, Pa.
Friday, Dec. 2, 1994
Report Supplied by Auction
98 TOTAL LOADS.
MIXED HAY: 67.00-150.00.
ALFALFA: 59.00-175.00.
TIMOTHY: 79.00-157.00.
ORCHARD GRASS: 75.00-135.00.
STUBBLE HAY: 44.00.
STRAW: 80.00-166.00.
EAR CORN: 69.00-73.00.
OATS: 2.10-2.50 BU.
FIREWOOD: 32.50 AND 62.00 LOAD.

Kirkwood Hay Auction

Kirkwood, Pa.
Tuesday, December 6, 1994
Report Supplied by Auction
49 LOADS OF HAY.
MIXED HAY: 1ST CUTTING 92.00-150.00, 2ND CUTTING 127.00-138.00.
TIMOTHY: 101.00-166.00.
ALFALFA: 1ST CUTTING 72.00-122.00; 2ND CUTTING 130.00-135.00; 3RD CUTTING 93.00-157.00; 4TH CUTTING 65.00-123.00.
CLOVER: 99.00-106.00.
SOYBEANS STUBBLE: 52.00.
GRASS: 100.00-130.00.
WHEAT STRAW: 104.00-141.00.
BARLEY STRAW: 147.00-151.00.
CORN FODDER: 63.00.
FIREWOOD: 45.00-100.00 LOAD.
SALE TIME 11 A.M.

Frederick Co. Hay

Buckeystown, Md.
Thursday, December 8, 1994
Report Supplied by Auction
21 LOADS. MARKET STEADY TO WEAK; WOOD LOWER.
ALFALFA: FAIR TO GOOD 107.00-125.00, MIXED 110.00-115.00.
TIMOTHY: GOOD 125.00, FAIR 95.00-105.00.
TIMOTHY AND CLOVER MIX: 92.00.
CLOVER: 100.00.
ORCHARD GRASS: FANCY 170.00.
STRAW: BY THE SQ. BALE, 1.90 EACH.
FIREWOOD: 60.00-77.50 CORD.
CHRISTMAS AND NEW YEAR PARTY DEC. 29.

State Graded Feeder Pig Sale

at Westminster Livestock Auction
Report Supplied by Auction
December 2, 1994
771 PIGS; LAST MONTH 406. DEMAND VERY WEAK. BULK OF PIGS SOLD 20.00-25.00 LOWER, ALTHOUGH SEVERAL LOTS OF #1 40-55 LB. PIGS WERE 10.00-15.00, LOWER 15% WERE BOUGHT FOR SLAUGHTER.
GRADE 1: 141 HEAD 42-56 LBS. 41.00-47.00; 86 HEAD 60-69 LBS. 35.00-37.00.
GRADES 1&2: 137 HEAD 41-59 LBS. 30.00-38.00; 103 HEAD 61-68 LBS. 25.00-36.00; 60 HEAD 70-77 LBS. 25.00-29.00; 108 HEAD 80-86 LBS. 22.00-25.00; 85 HEAD 90-117 LBS. 25.00-30.00.
GRADE 2: 17 HEAD 39-45 LBS. 25.00-28.00.
GRADES 2&3: 18 HEAD 36 LBS. 25.00.
NEXT STATE GRADED SALE FRIDAY, JAN. 6. NEW TIME 1 P.M.

New Holland Hogs

Monday, December 5, 1994
TOTAL HOGS: 1372 HEAD. MARKET 2.08 HIGHER.
US#1-2 220-260 LBS. 30.00-32.00, 275 HEAD 32.00-33.00; US#3-4 220-260 LBS. 26.50-30.00; US#1-3 180-220 LBS. 24.00-30.00, FEW TO 32.00; US#1-3 270-310 LBS. 24.00-28.00.
SOWS: 300-500 LBS. 16.00-18.00; THIN, ALL WEIGHTS 15.00-17.00; OVER 500 LBS. 18.00-19.75.
BOARS: 16.00-19.00.

Westminster Hay

Westminster, Md.
Tuesday, December 6, 1994
Report Supplied by Auction
108 LOADS.
ALFALFA: 115.00, 90-3.70 BALE, 100.00 TON LARGE ROUND.
TIMOTHY: 82.50, 1.55-2.60 BALE, 14.00-21.00 LARGE ROUND.
MIXED HAY: 1.25-2.60 BALE.
GRASS: 1.40-1.90 BALE, 20.00-22.00 LARGE ROUND.
CLOVER MIXED: 1.80-2.70 BALE.
FIREWOOD: 100.00 CORD.

Leinbach's Hay

Shippensburg, PA
December 3 and 6
Report Supplied by Auction
90 LOADS.
ALFALFA (GOOD): 90.00-127.50; (FAIR) 62.50-87.50.
MIXED HAY: 57.50-100.00.
TIMOTHY: 57.50-130.00.
CLOVER: 67.00-90.00.
BROME GRASS: 79.00-97.50.
ORCHARD GRASS: 67.00-95.00.
STRAW: 68.00-107.50.
EAR CORN: 68.00-72.00.
CORN FODDER: 37.50-72.00.
MULCH HAY: 30.00.
WOOD: 20.00-50.00 PICK-UP LOAD.

Dewart Hay

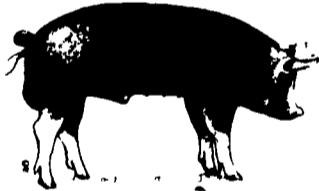
Dewart, PA.
Monday, December 5, 1994
Report Supplied by Auction
12 LOADS OF HAY, 70.00-95.00.
STRAW: 1 LOAD AT 81.00.
WOOD: 6 LOADS, 30.00-46.00.
CORN: 53.00 AND 60.00.
OATS: 1 AT 2.30 BU.

Vintage Hay

Paradise, PA
Thurs., December 8, 1994
Report Supplied by Auction
ALFALFA: 62.50-81.00.
MIXED HAY: 70.00-110.00.
TIMOTHY: 85.00-121.00.
GRASS: 78.00-81.00.
STRAW: 110.00.
CORN FODDER: 64.00.
TOTAL: 15 LOADS.
SALE TIME 1 P.M.

Lancaster Hogs

Lancaster Stockyards
Saturday, December 5, 1994
Report supplied by auction
There will no longer be a sale auction on Saturday. Sales will be held Monday and Wednesday.



North Jersey Market

Hackettstown, N.J.
Report Supplied by Auction
Tuesday, December 6, 1994
Hay—Straw & Grain Report
ALFALFA: 2 LOTS, 1.75 AND 2.10 BALE.
MIXED HAY: 3 LOTS, 1.90-2.10 BALE.
TIMOTHY: 4 LOTS, 1.25-2.80 BALE.
CLOVER: 1 LOT AT 1.50 BALE.
GRASS: 9 LOTS, 1.70-2.70 BALE.
GROUND CORN: 1 LOT AT 6.00 BAG.
SHELLED CORN: 1 LOT AT 7.50 AND 8.00 BAG.
CEDAR POSTS: 1 LOT AT 2.30 EACH.

Greencastle Livestock Market

December 1 and 5
Hay & Straw
Report Supplied by Auction
41 LOADS.
ALFALFA: 80.00-103.00.
TIMOTHY HAY: 85.00-102.00.
MIXED HAY: 71.00-87.00.
ORCHARD GRASS: 72.00-84.00.
BROME GRASS: 85.00-100.00.
STRAW: 64.00-96.00.
FODDER: 30.00.

Kutztown Produce Auction

Hay Auction
Report Supplied by Auction
Saturday, December 3, 1994
TOTAL LOADS: 29.
ALFALFA HAY: 90.00-112.00.
MIXED HAY: 82.00-96.00.
OAT STRAW: 75.00.
WHEAT STRAW: 95.00.
FIREWOOD: 30.00-100.00 LOAD.



LAMB & GOAT SALE
For the Christmas Holidays!
Tues., Dec. 13 & 20, 7 P.M.
Receiving 9 to 5
Carlisle
LIVESTOCK MARKET, INC.
Exit 12 Off I-81
(717) 249-4811 or
Evenings Jan. 249-2339

KIRKWOOD HAY AUCTION
Hay, Straw and Grain Auction
EVERY TUESDAY
11:00
Located Rt. 472 5 miles south of Quarryville or 6 miles north of Oxford corner of Rt. 472 and Noble Road.
Lloyd H. Kreider, Auctioneer
AU-000513L
No out of state checks

PENNFIELD GRAIN BANK
Pennfield Offers A Sound Program For The Dairy Farmer To Use His Grain "Same As Cash" To Reduce His Monthly Feed Bill And To Avoid Having To Take "Harvest Price" For His Grain
Prices Week Of 12/12/94
Corn \$2.59 Bu.
Soybeans \$5.52 Bu.
Barley \$2.03 Bu.
• No Storage Charges
• Prices Updated Weekly
• Grain Bank Balance Shown On Each Invoice
• No Hidden Charges
For every ton of qualifying dairy feed purchased you will receive one ton of grain back hauled at no charge
Call 1-800-732-0167
pennfield feeds

In This Issue

Four Sections

DEPARTMENTS	DAIRY
Editorial A10	DHIA Focus A23
Farm Calendar A10	Lancaster DHIA Report A24
Futures A16	Lancaster DHIA D 2
Mailbox Markets B21	
Sale Reports B24	HOME AND YOUTH
Public Auction Register B26	Homestead Notes B 2
Business News C 6	Home On The Range B 6
Classified Ads C 9, D 3	Cook's Question Corner B 8
	Kid's Korner B10
	Farm Women Societies B15
FEATURES	COLUMNS
Boyd Wolff A20	E-I-E-I-O A30
Agway's Fresh Start A28	Now is the Time A10
Pony Tractors A34	On Being A Farm Wife B 4
Sturgeon Farm A36	Taking Time B 5
Patches Family B 2	Ida's Notebook B11
Jersey Jug Queen B14	Family Living Focus B13
Diversification Ag. B16	You Ask B18
N.J. Beef C 8	Poultry Pointers C 4

Walter M. Dunlap and Sons offers all cattle feeders two marketing days. Give us a call for advice and marketing conditions.

MONDAYS OR WEDNESDAYS

Consign With Us - For The Marketing Edge

Next Feeder Cattle Sale
Wednesday, December 14 - 11:00 A.M.

Walter M. Dunlap and Sons
Lancaster Stockyards
Tel. (717) 397-5136
An Old Line Commission Firm Keeping Ahead With The Times