

Eighty-Four Livestock

Eighty-Four, Pa.

Monday, Dec. 5, 1994

Report Supplied by Auction

STEERS STANDARD 52.00-55.00; UTILITY 51.00 AND DOWN.

HEIFERS: STANDARD 51.50-54.50; UTILITY 50.50 AND DOWN.

COWS: BREAKING UTILITY AND COMMERCIAL 41.00-46.00, FEW TO 49.00; CUTTER AND BONING UTILITY 38.00-43.50; CANNER AND LOW CUTTER 34.00-37.50; SHELLS DOWN TO 32.50.

BULLS: YG#1 52.00-60.00; YG#2 44.00-50.50.

FEEDER STEERS: 200-300 LBS. 54.00-78.00, 300-500 LBS. 54.00-75.00, 500-800 LBS. 49.00-70.00; HEIFERS 200-300 LBS. 51.00-75.00, 300-500 LBS. 52.00-63.50, 500-800 LBS. 45.00-62.00; BULLS 200-300 LBS. 55.00-70.00, 300-500 LBS. 50.00-67.00, 500-800 LBS. 46.00-73.00.

VEALERS: CHOICE 89.00-102.00; GOOD 75.00-87.50; STANDARD AND GOOD 64.00-74.00; UTILITY 62.00 AND DOWN.

FARM CALVES: HOLSTEIN BULLS #1 120.00-137.50; HOLSTEIN HEIFERS 100.00-202.50; HOLSTEIN BULLS #2 87.50-117.00; BEEF BULLS 90.00-130.00; BEEF HEIFERS 85.00-120.00.

HOGS: US#1-2 200-220 LBS. 25.00-33.00, US#1-3 220-260 LBS. 25.00-36.50, US#2-3 260-300 LBS. 26.00-30.50.

SOWS: UNDER 500 LBS. 14.50-25.50; OVER 500 LBS. 16.50-17.50.

BOARS: 15.00-19.00.

FEEDER PIGS: US#1-3 20-40 LBS. 10.50-17.50; 40-65 LBS. 17.00-23.00; UTILITY 5.00.

SHEEP AND LAMBS: HIGH CHOICE AND PRIME 40-60 LBS. 81.00-92.00; 60-80 LBS. 80.00-88.50; 80-100 LBS. 74.00-80.00; CHOICE 100-125 LBS. 71.00-76.00; FEEDER LAMBS GOOD AND CHOICE 69.00-80.00; UTILITY 68.00 DOWN; EWES 30.00-39.00. GOATS; LARGE 49.00-54.00; MEDIUM 27.00-52.00; SMALL 18.00-24.00.

New Wilmington Livestock Auction

NEW WILMINGTON, PA

December 5, 1994

CATTLE 223... PDA ..Compared with last Monday's market..al. cows steady to 1.00 higher. STEERS: few Select and Choice 1045/1425 lbs. 58.00-63.00. COWS: Breaking Utility and Commercial 40.00-44.75, Yield Grade 4-5 32.00-37.00, Cutter and Boning Utility 37.00-43.00, Canner and Low Cutter 35.00-38.25. Shells down to 26.00. BULLS: few Yield Grade No. 1 1100/1595 lbs. 48.00-50.50, few No. 2 1100/1680 lbs. 40.00-47.50. FEEDER CATTLE: Steers: few Medium Frame No. 1 300/475 lbs. 57.00-68.00; Heifers: Medium Frame No. 1 300/525 lbs. 51.00-59.00; Bulls: Medium Frame No. 1 300/525 lbs. 60.00-67.00.

CALVES 236...VEALERS: Standard and Good 75/115 lbs. 42.00-50.00, Utility 50/70 lbs. 19.00-30.00. FARM CALVES: No. 1 Holstein bulls 120/135 lbs. 104.00-113.00, 90/115 lbs. 106.00-123.00, 80/85 lbs. 75.00-77.50, No. 2 90/115 lbs. 81.00-114.00; No. 1 Holstein heifers 95/120 lbs. 225.00-249.00, No. 2 75/115 lbs. 75.00-190.00. Beef cross bulls and heifers 80/130 lbs. 70.00-131.50.

HOGS 249...Barrows and gilts mixed .25 lower to .75 higher. BARROWS AND GILTS: US 1-2 230/270 lbs. 28.00-29.00, couple 35.00, US 1-3 215/270 lbs.

25.00-27.85, few US 2-3 250/270 lbs. 27.00. SOWS: US 1-3 350/605 lbs. 17.00-22.00, one 26.00, few Medium 310/500 lbs. 15.00-24.00. BOARS: few 300/600 lbs. 16.00-16.75.

FEEDER PIGS 23...US 1-3 45/55 lbs. 23.00-24.00. --- per head.

SHEEP 98...Slaughter Lambs: High Choice and Prime 65/105 lbs. 72.00-82.00, few 90.00, Choice 50/115 lbs. 59.00-68.00. Slaughter sheep: 24.00-33.00.

GOATS 13...Few Large 45.00-69.00, few Medium & Small 30.00-50.00, few Large Kids 30.00-40.00. --- per head.

St. Louis Cattle, Hogs

SPRINGFIELD, IL

MONDAY DECEMBER 5, 1994

NATIONAL STOCKYARDS, ILLINOIS CATTLE AND CALVES 500 COMPARED TO LAST MONDAY, SLAUGHTER STEERS AND HEIFERS MOSTLY STEADY. COWS AND BULLS FULLY 2.00 LOWER. SLAUGHTER SUPPLY MAINLY CHOICE AND MIXED SELECT AND CHOICE STEERS AND HEIFERS. AROUND 10% COWS. LIGHT SUPPLY HOLSTEIN STEERS.

SLAUGHTER STEERS: CHOICE 2-4 1050-1400 LBS. 64.50-66.00, 1400-1500 LBS. 60.00-63.00, 3-4 1100-1350 LBS. 58.00-60.00, FEW LOTS 2-3 1125-1325 66.00-66.50. MIXED SELECT AND CHOICE 2-3 950-1275 LBS. 62.00-64.50. SELECT 2-3 59.00-62.00. HOSTEINS STEERS: FEW CHOICE 2-3 1250-1400 LBS. 57.00-58.00. MIXED SELECT AND CHOICE 2-3 975-1325 LBS. 50.00-54.00.

SLAUGHTER HEIFERS: CHOICE 2-4 900-1250 LBS. 63.50-65.00, 2-3 925-1200 LBS. 65.00-66.00. MIXED SELECT AND CHOICE 2-3 850-1200 LBS. 61.00-63.50; SELECT 2-3 800-1200 LBS. 58.00-61.00.

Lancaster Farming, Saturday, December 10, 1994-A17

SLAUGHTER COWS: BREAKING UTILITY AND COMMERCIAL 2-4 33.00-36.00, HIGH YIELDING BREAKING UTILITY 36.00-38.00. CUTTER AND BONING UTILITY 1-2 36.00-38.00, FEW HIGH YIELDING CANNER AND LOW CUTTER 1-2 38.00. CANNER AND LOW CUTTER 1-2 31.00-34.00. SHELLY CANNER 1-2 27.00-31.00. FEW 800-900 LBS. 24.00-27.00. FEW 800-900 LBS. 24.00-27.00.

BULLS: FEW YIELD GRADE 1-2 1175-1700 LBS. 42.00-48.00, INDIVIDUAL YG 1 50.00.

THIS REPORT IS A SERVICE OF THE USDA AND THE ILLINOIS DEPARTMENT OF AGRICULTURE LIVESTOCK AND GRAIN MARKET NEWS (217) 782-4925.

Frederick Livestock Auction

Frederick, Md.

December 5, 1994

Report Supplied by Auction

SLAUGHTER COWS: 120 HEAD. UTILITY 40.00-43.50; HIGH DRESSING TO 44.75; CANNERS 36.00-40.00; SHELLY 36.00 DOWN.

BULLS: YG#1 1500-1700 LBS. 50.00-51.50; YG#2 48.00-49.00; 2 HEAD 2200 & 2400 LBS. 45.75-46.25.

FED STEERS: NO CHOICE; 1 SELECT 1175 LBS. AST 60.00; STANDARD 51.00-56.00.

HEIFERS: HOL TO 47.50.

VEAL CALVES: 227 HEAD. CHOICE 1 315 LB. AT 80.00; CULLS 85-110 LBS.

38.00-45.00, FEW TO 50.00; 50-80 LBS. 30.00-40.00; WEAK/ROUGH 30.00 DOWN.

FARM CALVES: HOLSTEIN BULLS #1 90-120 LBS. 105.00-124.00; #2 85.00-100.00; 80-85 LBS. 48.00-87.00; HOLSTEIN HEIFERS #1 90-120 LBS. 180.00-205.00; #2 80-110 LBS. 100.00-160.00; BEEF X BULLS 95.00-130.00; HEIFERS 70.00-97.00.

STOCK CATTLE: STEERS 400-500 LBS. 63.00-68.50; 500-700 LBS. 56.00-65.50; 700-900 LBS. TO 61.50. HEIFERS: NONE.

BULLS: FEW 700-900 LBS. 43.00-47.50; FEW HOL 260 LBS. AT 64.00.

LAMBS: 50-75 LBS. 71.00-75.00.

GOATS: MEDIUM TO LARGE NAN- NIES 35.00-50.00; SMALL 24.00-37.00.

PIGS AND SHOATS: BY THE HEAD, 2 HEAD 75 LBS. AT 18.00.

BUTCHER HOGS: 51 HEAD. US#1&2 230-260 LBS. 27.25-27.60; 7 HEAD 268 LBS. AT 26.10; FEW 280-295 LBS. 31.00; 300-350 LBS. 23.50-30.00; 400-500 LBS. 18.00-21.00.

SOWS: FEW 400-500 LBS. 16.50. BOARS: 1 245 LB. AT 19.50.

NEXDT MON., DEC. 12: SIRE POWER WILL BE BUYING STRONG OPEN COWS FOR AN ARTIFICIAL BREEDING SCHOOL.

HATFIELD QUALITY MEATS WEIGHT AND GRADE PROGRAM... 29.88 PLUS BONUS ON QUALITY HOGS. BUYING STATION IS HELD EVERY TUES. AT FOUR STATES.

HYTEST BRAND HYBRID CORN BRINGS YOU

New Beginnings...

New Beginnings are allowing us to tap into state of the art research programs with better genetics at our fingertips!

Introducing 21 new products for our 1994-95 lineup! Eight new Hytest Brand corn hybrids, 8 new soybeans, 3 forage grasses plus 2 new alfalfa varieties

Eight New Corn Hybrids!

BH4107 - 80 day maturity	Excellent early season corn
BH4208 - 85 day maturity	Excellent all purpose hybrid with ability to perform well in all soil types
BH4304 - 90 day maturity	Strong high protein, high oil content standard 3-4% oil content
BH4404 - 100 day maturity	Excellent plant health ability to stand up under stress, top yield potential
BH4706 - 113 day maturity	Excellent stress tolerance & widely adaptable for variable soils, environments & management practices
BH4909 - 114 day maturity	Excellent plant health
BH4920 - 114 day maturity	Excellent plant health & stress tolerance
BH4934 - 112 day maturity	Excellent plant health & stress tolerance

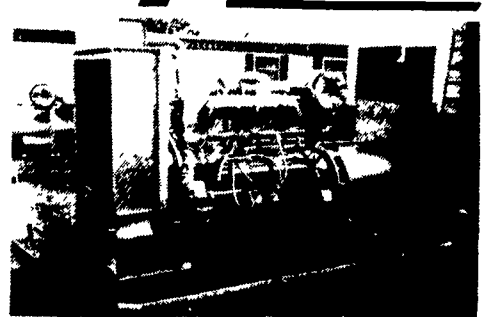


Our reputation is growing in your fields!

FOR HIGH PERFORMANCE HYBRID CORN, ALFALFAS, SOYBEANS AND FORAGE GRASSES, SEE YOUR LOCAL HYTEST BRAND DEALER

New Connections...

MARTIN MACHINERY



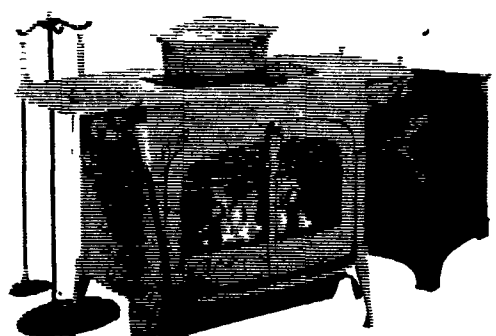
GENERATORS

Sales ★ Service ★ Rentals
★ Complete Generator Systems
★ PTO ★ Portables ★ 2-1600 KW
"We Service It If You Have It And Sell It If You Need It"

34 W. Mohler Church Rd.
Ephrata, PA 17522

Tel: 717-738-0300
Fax: 717-738-4329

VERMONT CASTINGS



Prices Start At \$849

WE HAVE:

• Wood, Coal & Gas Stoves
• Fireplaces
• Accessories

• Gloves • Tea Kettles
• Screens • Tool Sets
• Andirons • Grates
• Fire Starters • Pokers
• Popcorn Poppers
• Chimney Brushes •

BOWMAN'S STOVE & PATIO INC.

906 E. Main St. (Rt. 322) Ephrata, PA
1 Block East of Rt. 222
(717) 733-4973 1-800-642-0310

Mon., Tues, Wed. 10 to 6; Thurs., Fri. 10 to 8; Sat. 10 to 4