

Public Auction Register

Closing Date Monday 5:00 P.M.
of each week's publication

PUBLIC AUCTION

THURS., DEC. 8, 1994
10:00 AM SHARP

LOCATION

2 miles west of Cairo, Ohio on Lincoln Hwy. (Old 30). Just 4 miles north of Lima, Ohio. "Watch for signs off St. Rt. 65 and St. Rt. 115."

SHARP! LOW HOUR! TRACTORS COMBINE

1980 John Deere 6620 Combine, 26L 28 tires, air, hydrostatic drive, chopper, chaffe spreader, Ser. #407403. Only 1006 Hrs. "Like New"
1980 John Deere 220 Flex Grain Table
1981 John Deere 643 Oil Bath 6x30" Corn Head. Very Low Acres, JD 3 Pt. Head Carrier
1980 John Deere 4640 Diesel Tractor, Cab, Air, Quad Triple Remotes 20.8-38 Hub Duals Wts. Only 1570 Hours, Excellent Condition
1979 John Deere 4440 Diesel Tractor, Cab, Air, Quad, 18.4-38 Hub Duals Wts. Only 1609 Hours, Excellent Condition
1966 John Deere 4020 Diesel Tractor, Dual Remote 15.5-38 Tires & Duals W.F.
John Deere 158 Hyd. Loader w/8' Bucket and Fork Attachment, "ON 4020 will be offered separate."
John Deere 50 Gas Tractor P.S. w/J.D. 45 Loader w/Boom Pole

FARM EQUIPMENT

1994 John Deere 750 No-Tile Drill with Yetter Markers, Ser. #6832, "Like New" with Frt. Dolley wheels, John Deere 7000 6x30" Planter Liquid Fert. Herb Insect. Monitor w/Midwest harrow, John Deere 400 20' 3 pt. Rotary Hoe, John Deere 2800 6x variable width Plow like new, John Deere 235 24' hyd. Fold Disc, w/1 Bar harrow, 1992 Yetter Eliminator Deep Tillage Tool 3 Pt. Gauge Wheels, John Deere 1000 24' Field Cult. w/Walking Tandem w/1 Bar Harrow, Brillion 15' cultmulcher, John Deere 1418 3 pt. Rotary 14' Mower 3 pt. Lift Assist. John Deere RM 6 30" Danish Tine Cult w/Rolling Shields, John Blue 500 Gal. Field Sprayer w/Ground Drive Pump Folding Booms, John Deere 16' Flat Bed Wagon w/Grain Sides, Twp. Road Grader, Spray Cart, 4 sets JD Rear Wts. 20 Series Ft. Wts., R.R. Jack, Large Pipe Wrenches, 4 Black JD Cylinders, Victor Torch Outfit w/Cart and tanks, Lincoln Welder, Air Compressor, (3) 1000 Gal. Tanks for water or fert. 2 Pumps w/Gas Motors, Dickey John Moisture Tester, 3/4" Socket Set, Gas Weed Eater, Hand Fuel Pump, Barrel 15 W 40 Oil & Pump, Hyguard Barrel w/Pump, Truck Tires, Tarps, 1000 Gal. Diesel Fuel Tank w/Pump, Gas Drum w/Pump; Shop Vac. Wagon of John Deere Parts - many new, 2 large parts bins from J.D. store, new Hyd. Hose, Tachometer.

TRUCKS

1975 Chevy C-65 5-2 366 w/16" Bed and Holst, Roll Tarp, Cheater Air Axle
1958 Chevy Grain Truck with 14' Grain Bed, 36752 miles
1957 Chevy Grain Truck with 14' Bed & Holst, mileage unknown but low, Truck Fert. Auger Fold Down
1954 Chevy Grain Truck with 14' Grain Bed, 63496 miles

MARINE RADIOS

Four (4) Uniden Marine FM Radios, 1 used as base. "President Models" Antennas and Base Antenna. 1 Hand Held Unit. "Radios are Like New."

NOTE: This is an exceptionally nice line of John Deere Equipment all low hours and has had the very best care.

"Come buy something you will be proud to own."

OPEN HOUSE FOR VIEWING EQUIPMENT

SUNDAY, DECEMBER 4, 2:00-4:00
MONDAY, DECEMBER 5, 12:00-4:00
AND WEDNESDAY, DECEMBER 7, 12:00-4:00
OR BY APPOINTMENT

Terms: Cash or Good check w/proper I.D. Out-of-town checks must have bank letter of credit for amount check will be honored.

OWNER: **Jesse Martz Estate**
Mrs. Jesse Martz - Executor
Robert Weaver - Attorney for Estate

Licensed and bonded in favor of State of Ohio

Loader Tractor provided on day of sale so bring your truck!

Lunch on grounds. Not responsible for accidents.

CONDUCTED BY
SIEFKER
Real Estate & Auction

Sales Manager & Auctioneers
AARON SIEFKER
Ottawa, Ohio
419-538-6039

DARREL YODER
Lyons, Ohio

BUTCH STETLER
Rockford, Ohio
419-363-2463

TOM ROBBINS
Celina, Ohio

Phone (419) 538-6039 • Mobile (419) 235-0789

FRI. FEB. 17 - 10 AM
Horse Sale. New Holland
Sales Stables, Inc., 101 W.
Fulton St., New Holland.

WED. FEB. 22 - 9AM Full
line horse farm machinery,
8 work hgsorses, produce,

etc. 8 miles S. of Williams-
port, Pa. near Rt. 15 blinker
light. Jonas & Salome
Fisher, owners. By Fraley
Auction Co.

THURS. FEB. 23 - 10AM
Farm machinery. Located

E. of Lanc. from Junction of
Rt. 30 and 41 go S. on Rt.
41 1 mile to Town Clock,
turn right, cross railroad
bridge turn left on Mine Rd.
go approx. 2 miles to Smyr-
na Rd. turn left first farm on

right. Lanc. Co., Pa. For
Calvin D. and Lillian Beiler.
Leon E. Kurtz, J. Omar
Stoltzfus, Aucts.

THURS. FEB. 23 & FRI.
FEB. 24 - 8:30AM Farm

equip, new, used and
abused, antique tractors
and engines. Located 10
miles E. of Lanc. turn off Rt.
23 on S. Groffdale Rd.
Right on Mussels School
Rd., Lanc. Co., Pa. Elias S.
and B. John Beiler, owners.
Robert E. and Jeffrey R.
Martin, Randall L. Ranck,
aucts.

FRI. FEB. 24 - Modern farm
machinery, 6 tractors,
backhoe, Case 1h 1460
combine, etc. on farm 3
miles W. of Muncy near
Mall Sellers, Muncy Farms-
Frank White. Fraley Auc-
tion Co.

SAT. FEB. 25 - 9AM Com-
plete liquidation at public
auction. Willards Turkey
Farm, machinery & operat-
ing supplies, tractors, farm
equip, misc. Located at
24900 Raven Rock Road.
James G. Cochran, auct.

SAT. FEB. 25 - 9:30AM
Parksburg, Chester Co
Full line farm machinery, 2
International diesel trac-
tors, 1066 and 986, grain
truck, cattle truck. By Omar
and Dorcas Smoker. Steve
Petersheim Auct

SAT. FEB. 25 - 2PM 1 1/2
story brick and farm dwell-
ing w/2 car garage
attached. At West End of
New Holland at 906 W
Main St. Terms by: John
Glick, Robert E. & Jeffrey
R. Martin, Randall L.
Ranck, aucts.

MARCH

THURS. MAR. 2 - 9AM
Farm machinery, hay,
straw & corn silage. Take
Rt. 222 4 mi. S. of Lanc.,
Pa. turn left on Gypsy Hill
Rd. to first farm right, or
from Strasburg Rt. 741 to
Rt. 222 turn right 1/4 mile to
Gypsy Hill Rd. By Spring-
Belle Farm c/o Roger Mills.
Kreider, Kline & Good
Aucts.

FRI. MAR. 3 - 10 AM Horse
Sale. New Holland Sales
Stables, Inc. 101 W. Fulton
St., New Holland, Pa.

SAT. MAR. 4 - Bart Town-
ship Fire Com. Farm
Machinery, lawn and gar-
den, quilt auction. March
18. Building Materials Sale.
Bart Township Fire Co.

SAT. MAR. 11 - Sale for
Norman and Ada Snyder.
Along E Farmersville Rd.,
Hinkletown Farm equip.
and butcher equip. Nevin
Martin and Sons, Aucts.

SAT. MAR. 11 - 9AM Farm
machinery, antiques & HH
goods. 89 Pinnacle Rd., W.
Holtwood, Pa. Rt. 372 W. of
Buck, turn right on River
Rd. 2 mi. to Pinnacle Rd
1st farm left. By Luke B. &
Sara Ann Boll. Kreider,
Kline & Good aucts.

SAT. MAR. 11 - Modern
Farm machinery, 3 tractor.s
dairy equip, etc. on farm 3
miles E. of Mill Hall, Pa
Tony & Carline Graine. Fra-
ley Aucts.

TUES. MAR. 14 - 9AM
Farm machinery, house-
hold goods. Loc. Take Rt
896 S. of Strasburg, Pa. 2
mi., turn left on Paradise
Lane to first farm right By
Robert L. Shaubach. Aucts.
Kreider, Kline & Good.

TUES. MAR. 14 - 9AM
Farm equip. and livestock.
Located between New Hol-
land and Leola along Rt.
23. Terms: John Glick,
Robert E. & Jeffrey R. Mar-
tin, Randall L. Ranck,
aucts.

THURS. MAR. 16 - 9:30AM
4 tractors, forage and til-
lage equip, 3 silos, 2
harvestores, barn and
feeding equip, bulk tank,
Case International 5220,
400 hrs. Henry and Kathy
Hershey. Steve Peter-
sheim, auct

THUR. MAR. 16 - 10AM
1 1/2 mi. S. of Annville, 1/4
mi off Rt. 934 on Church
Rd. Farm machiner, 4240
JD ex., 2355 JD like new;
800C uni-tractor w/
combine, flexhead & 4R
cornhead, 7x20 gooseneck
cattle trailer, HMI 14C skid-
loader. Clarence & Harriett
Weaver. Kurtz & Bucher,
aucts.

PUBLIC SALE

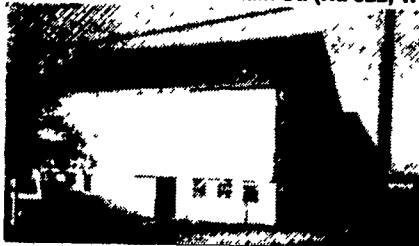
2 ACRE FARMETTE, 2 1/2 STORY FRAME DWELLING,
STONE & FRAME BANK BARN

CLAY TOWNSHIP

SATURDAY, DECEMBER 17, 1994

AT 3 P.M.

Located at 2059 W. Main St. (Rt. 322, West of Ephrata), Clay Township, Lancaster County, PA



2 1/2 STORY FRAME DWELLING W/ATTACHED 2 CAR GARAGE

Lg. living room, parlor, kitchen w/cabinets, G.E. stove w/double oven, G.E. dishwasher, GE refrigerator, ceiling fan, Laundry room w/laundry hookap, laundry tub & cabinet, sewing room/den, full bathroom w/shower & storage closets.

Second floor four full size bedrooms w/closets, one bedroom/sewing room, full bathroom, cedar closet.

This dwelling also features a full basement, cold cellar, oil hot water heat (new burner, 200 Amp elec. service, borough sewer & water, well & pressure system w/water softener.

ATTACHED TWO CAR GARAGE w/16' overhead door & auto opener.

STONE & FRAME BANK BARN w/attached workshop. This bank barn contains (3) pig pens, heifer pen, rabbit cages & office/shop area.

Second floor lg. storage area and an ATTACHED HEATED WORKSHOP. This workshop is insulated. Electric Heat.

LOT SIZE: 2 ACRES M/L w/258' road frontage West Main St.

This small farmette has many outstanding features! The 2-1/2 story dwelling offers 5 bedrooms and 2 full bathrooms. The bank barn has many possibilities! It offers 2 full floors of storage area as well as a large heated workshop.

Open House: Sat., Dec. 3 & sat., Dec. 10 from 1 p.m. to 3 p.m. or call 733-9285.

No Out-of-state checks unless accompanied by a current bank letter or prior arrangement with auction service.

Sale For:
Franklin W. Shirk

HORST AUCTS.

T. GLENN AU438L
TIMOTHY G. (717) 859-1331 • (717) 738-3080
THOMAS A. Fax # (717) 738-2132
"VOICES OF EXPERIENCE"

NORTHERN VIRGINIA CONTRACTORS' AUCTION

END OF THE YEAR SALE

JCT OF RTES 15 & 55 HAYMARKET VIRGINIA

FRIDAY, DECEMBER 9, 1994 • 9:30 AM SHARP

Directions: From DC take Route 66 West to Haymarket Exit (Rt 15 S.), cross overpass of route 66 to light at the junction of Route 15 & 55, turn left. Sale on immediate right.

PARTIAL LISTING

TRACKLOADERS & DOZERS

CAT 955L Orops, G.P. bucket, S/N 57M00745; CAT 955K Orops, G.P. bucket; IHC 125 C trackloader Orops, G.P. bucket w/ripper, S/N 24000819; CASE 450 trackloader Orops G.P. bucket.

LOADER BACKHOES & SKIDSTEERS

CASE 580C Orops, standard hoe; JCB 1400 Orops, standard hoe; JD 410 enclosed cab, standard hoe, S/N 384304T; FORD 555 Orops, standard hoe; BOBCAT 743 w/diesel engine; BOBCAT 825 w/diesel eng, S/N 17370.

CRANE, FORKLIFTS & AIR COMPRESSORS

BUCYRUS-ERIE H15 15 ton truck crane, hyd. outriggers 65' reach; YALE 3000 lb forklift w/LP gas engine, solid tires; IR 185 cfm w/JD diesel; IR 175 cfm w/Duetz.

ROAD TRACTORS & YARD JOCKEY

1991 KENWORTH T-800 T/A tractor w/42" sleeper, 40,000 lb air suspension, Jake brake, air slide 5th wheel, A.C., p.s., radio, 11R-22.5 aluminum front wheels, Cat 3176 engine w/9 spd trans; 1981 White cabover w/diesel eng, 10 spd; 1979 White ROAD BOSS T/A tractor, diesel eng, 9 spd trans; 1979 GMC S/A w/671 Detroit diesel, 9 spd trans; OTTAWA yard jockey w/hyd. 5th wheel.

DUMP TRUCKS

1986 FORD F-700 S/A flatbed dump w/diesel eng, 5/2 spd trans; 1985 FORD F-700 S/A flatbed dump w/diesel eng, 5/2 spd trans; 1981 IHC S/A flatbed dump, DT 466 eng, 5/2 spd trans, air brakes, pentle hitch and gladhands, ready to pull trailer; 1979 IHC dump w/DT 466 eng, 5 spd trans.

SPECIALTY TRUCKS, CAB & CHASSIS

1990 IHC S/A box truck w/lift gate, diesel eng, 5/2 spd trans; 1986 FORD 8000 S/A diesel eng, 5/2 spd trans w/Loadmaster trash truck body; 1984 CHEVY 1 ton cube van, gas eng, auto trans; 1982 IHC 1700 S/A utility body, gas eng, 5 spd trans; 1981 IHC 4 car rollback, DT 466, 5/2 spd; 1981 IVECO C&C w/diesel eng; 1980 IHC C&C w/gas eng, 5/2 spd trans; 1989 FORD F-350 1 ton C&C; 1978 GMC 5000 S/A w/1200 gal septic body; separate pump w/75' hose; 1979 IHC S/A C&C, DT 466 engine, 5/2 spd trans, air brakes, long wheel base; 1978 FORD LN 700 S/A C&C; 1978 FORD F-800 S/A digger derrick 5/2 spd trans, gas eng; 1975 FORD F-750 S/A w/Holmes 600 wrecker body, 3208 CAT engine, air brakes, 5/2 spd trans.

TRAILERS & SEA CONTAINERS

32' FRUEHAUF T/A alum dump trailer; EAGER BEAVER 12 ton w/elec brakes; 1979 TRUSS trailer; (4) 20' Sea Containers; (2) 40' Sea Containers

VEHICLES

1989 FORD Taurus Wagon

MISC.

(4) reconditioned Motorola radios, plate steel, traffic cones, chains, jumping jack tampers, jackhammers, contractor tools, water pumps, vibratory plates, hyd hose, drill bits, power tools, welders, generator, truck hitches, and other contractor tools too numerous to mention.

TERMS OF SALE: COMPLETE PAYMENT SALE DAY. Payment for all items must be made in full on sale day with CASH, CASHIER'S CHECKS. Personal or Company Checks accepted with a Valid Bank Letter of Guaranteed Payment. Items sold "As-is, Where-is" with no warranties expressed or implied. Immediate removal. Not responsible for accidents.

INSPECTION: Thursday, December 8, 1994, from 10:00 AM to 4:00 PM. Sale site phone (703) 754-0768.

MOTELS: In Manassas, Virginia: Holiday Inn (703) 361-0131; Ramada Inn (703) 361-0221;

Super 8 (703) 369-1700

AIRPORT: Dulles International Airport

Wolfe

INDUSTRIAL AUCTIONS, INC.
585 Martin Road, Gettysburg, Pennsylvania 17325

(800) 443-9580 • (717) 334-0066

VA DLR #8929

VA A.F. #128

Randy Ruby, President