

National Egg Market
ATLANTA, GA
NOVEMBER 30, 1994
NATIONAL EGG MARKET - AT A GLANCE:

Prices were generally unchanged except jumbo and small brown prices were lower in New England. The market tone was steady to weak. Demand was mixed across the full range, and was mostly moderate as the post-holiday restocking dwindled. Supplies were adequate or available. Breaking stock supplies were adequate for the light to moderate demand, and prices were higher in the Central States region. Live hen offerings were adequate to fully adequate for the very light to moderate demand, and the undertone was about steady.

Eastern PA & NJ Poultry
ATLANTA, GA
NOVEMBER 29, 1994
NORTHEAST LIVE HEN REPORT,
NOVEMBER 29, 1994. FEDERAL-STATE
Prices were close to unchanged on light type fowl compared to prior week. Offer-

ings have increased and were usually sufficient to cover slaughter requirements. Sales on heavy hens were too few to report. Offerings have slowed and were short to no better than in balance. Finished sales were seasonally active and clearing floor stocks at most locations. Undertone at least steady.

LIGHT TYPE HENS
CENTS PER LB., DAY OF NEGOTIATION, GENERALLY FOR SLAUGHTER WITHIN THE NEXT 10 DAYS

RANGE MAJORITY
AT FARM BUYER LOADING 0-1 CENTS/LB. FOB PLANT TOO FEW TO REPORT

HEAVY TYPE HENS (7 POUNDS AND UP) *

PRELIMINARY PRICE, CENTS PER LB., GENERALLY FOR SLAUGHTER THE WEEK OF 05-DEC-94

RANGE MAJORITY
AT FARM BUYER LOADING TOO FEW TO REPORT FOB PLANT TOO FEW TO REPORT

* WEIGHTS UNDER 7 LBS. SUBJECT TO DISCOUNT.

PREPARED: 29-NOV-94 11:28 AM E JJI/kc

For additional information, please call (404) 347-4121.

NY Egg Market
EDISON, NJ

November 30, 1994

NORTHEAST REGION BROILER FRYER REPORT FEDERAL-STATE

Trucklot buying interest for ready to cook whole broiler/fryers was generally disappointing. Offerings were fully adequate for the current light buyer interest. Retail and distributive movement was not picking up to the extent expected. Trade sentiment was usually reported as steady at best. In the parts complex dealers were also discouraged with current business. Most hoped that promotional activity coupled with the first of the month would stimulate additional consumer buying interest.

For additional information, please call (908) 985-8880.

New England

Shell Eggs

EDISON, NJ

MAY 19, 1994

SHELL EGGS IN NEW ENGLAND, MAY 19, 1994. FEDERAL-STATE NEW ENGLAND:

Prices were unchanged to higher. Trade sentiment remained steady to firm.

Lancaster Farming, Saturday, December 3, 1994-A5

Demand was mostly moderate. Supplies were generally adequate.

PRICES PAID TO PRODUCERS, CASES EXCHANGED, GRADE YIELD BASIS, BROWN EGGS LOOSE, AT FARM, CENTS PER DOZEN.

RANGE JUMBO 69-72 EXTRA LARGE 67-70 LARGE 63-66 MEDIUM 51-54 SMALL 24-27

BOSTON:

PRICES TO RETAILERS, SALES TO VOLUME BUYERS, USDA GRADE A AND GRADE A, BROWN EGGS IN CARTONS, DELIVERED STORE DOOR, CENTS PER DOZEN.

RANGE EXTRA LARGE 80-86 LARGE 76-82 MEDIUM 66-71

PREPARED: 19-MAY-94 11:55 AM E CLB

The market tone was cautiously steady to weak. Demand was light to moderate for immediate needs. Floor stocks were at least adequate. Shell eggs were generally abundant, and prices were mostly unchanged. Many plants worked Saturday to keep shell egg inventories manageable.

WHOLESALE SELLING PRICES (CENTS PER POUND IN 30 LB. CONTAINERS)

TRUCKLOTS LTL (MIN. 25 CONT.)

RANGE MOSTLY RANGE

W-71 WHITES 35-37 35-36 38-47

SUGARED YOLKS (MIN 43% SOLIDS) 57-61 58-59 61-66 SALTED YOLKS (MIN 43% SOLIDS) 54-57 55-56 57-63

(/) - WHOLE PLUS YOLK PLUS SWEETENER, GENERALLY 28-32% EGG SOLIDS.

PREPARED: 29-NOV-94 09:21 AM E CLB

For additional information, please call (404) 347-4121.

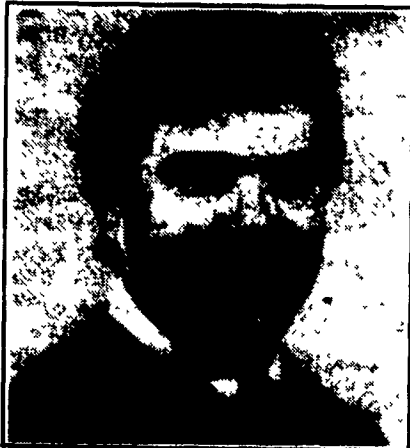
Atlanta, Ga.
NOVEMBER 29, 1994
EASTERN REGION FROZEN EGGS
NOVEMBER 29, 1994.
FEDERAL-STATE
Prices were unchanged to lower for whole eggs, and unchanged on the balance.

MARK YOUR CALENDAR



PENNFIELD DAIRY DAYS

Featured Speakers



Randy Shaver, PhD, PAS
Dairy Extension Specialist
University of Wisconsin-Madison



Timothy Snyder, PhD, PAS
Mgr., Dairy Nutrition, Pennfield Corp.

SUN	MON	TUE	WED	THUR	FRI	SAT
JANUARY		24 NORTHERN PA. Tuesday, Jan. 24 Shickelkill Inn Turkington, PA.	25	26 CENTRAL PA. Thursday, Jan. 26 The Embury Carlisle, PA.	27	28
SUN	MON	TUE	WED	THUR	FRI	SAT
FEBRUARY			1	2	3	4
5	6	7 SOUTH CENTRAL PA. Wednesday, Feb. 7 Kaufman's Community Center Chambersburg, PA.	8 NORTHERN PA. Thursday, Feb. 8 Wood & Plenty Feed, Lancaster, PA.	9 SOUTHEASTERN PA. Friday, Feb. 9 Wood & Plenty Feed, Lancaster, PA.	10	11
12	13	14	15	16	17	18
19	20	21 SOUTH CENTRAL PA. Tuesday, Feb. 21 Kaufman's Community Center Chambersburg, PA.	22 EASTERN SHORE MD. Wed, Feb. 22 Howard Johnson Millington, MD.	23 CENTRAL MD Thursday, Feb. 23 New Midway Fire Hall New Midway, MD.	24	25

- 9:30 a.m. Exhibitors Open:
**Advantage Protein, Bovatec[®], Deccox[®],
Diamond V Yeast, Tend-R-Leen[®], and Zin Pro.**
- 10:15 a.m. **Pennfield's Exclusive New "Super Flake"**
- 10:30 a.m. **Feeding High Producing Cows Economically**
-Balancing To Meet Rumen Needs
-Managing For Top Production
presented by Dr. Randy Shaver
- 11:15 a.m. Questions
- 11:30 a.m. Lunch
- 12:30 p.m. Presentation of President's Club Awards
- 1:00 p.m. **Pennfield Programs Make The Most of On Farm Feeds**
-Reduce Feed Cost With Quality Forages
-Feeding Beans, Barley, and Corn
presented by Dr. Tim Snyder
- 1:40 p.m. **Not Just a Feed - A PENNFIELD PFR**

FOR MORE INFORMATION CALL 1-800-732-0467

pennfield feeds

