

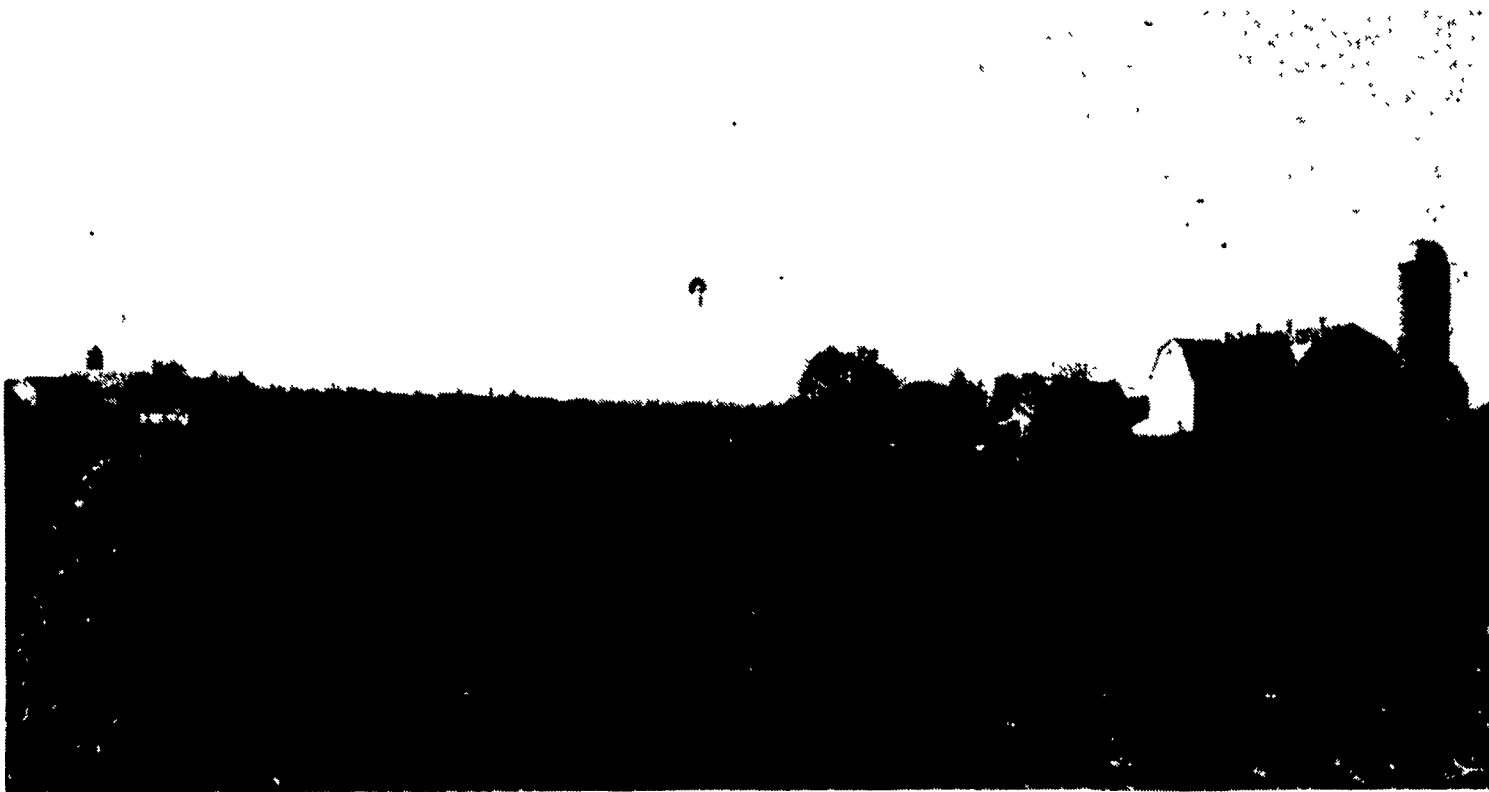
# Corn Fodder Shocks Form Farm Scenes Around Ephrata

**EPHRATA (Lancaster Co.)** — A time to relax on the farm just after Thanksgiving with anticipation of Christmas gives you a good feeling of contentment and spiritual renewal. The excellent growing season helped the land to give bumper crops. And good fall weather helped with harvesting so that only a few corn fodder shocks still dot the fields as reminders of the past year's activities.

For persons with a subjective bent and a pictorial eye for farming, the low, early winter, south afternoon sun that casts long dark shadows across the landscape, provides incentive to grab a camera and spend a few moments alone with God and nature drinking in the quietness of the countryside.

A more objective view of the farm situation comes from the latest production reports. Across the U.S., corn for grain production is forecast at a record high 10 billion bushels, up 58 percent above the 1993 crop. Soybean production is also forecast at a record high 2.52 billion bushels, 35 percent above last year. While many farmers needed the bumper crop to offset the damage from droughts and floods of the 1993 growing season, the glut of grain has depressed prices and provided feed to expand beef and pork production to the point where meat prices are also low.

While the business of farming is tough, scenes of farming make the heart soft in those who love this business. *Photos by Everett Newswanger, managing editor.*



At the corner of Long Lane Road and Martindale Road.



Down and up Long Lane Road southeast of Ephrata beyond Quarry Road.



Along Route 322 east of Ephrata beyond Reidenbach Road.