

# York DHIA Awards Presented

**JOYCE BUYP**

**York Co. Correspondent**

**SHREWSBURY (York Co.)**

— Three dairy farms in York County have been recognized by the Dairy Herd Improvement Association (DHIA) for high herd production during the 1994 test year. The awards were presented during the county's annual DHIA meeting and recognition dinner, held November 22 at the Shrewsbury Fire Hall.

Smyser's Richlawn Farms topped the county as high herd for milk production, with a rolling herd average of 25,044 pounds milk, 771 protein add 974 fat on 75 cows. The award continues a several-year, high-milk-herd winning streak for brothers Rodney and Robert Smyser, East Berlin Road, York.

High protein production award was earned by Blue Knoll Farms, operated by the Ralph and Howard Fetrow families, Lewisberry Road, York. The 85-head herd finished the DHIA test year with a rolling herd average of 805 pounds protein, 24,923 milk and 846 fat.

Topping the list of herds by butterfat production was William Myers, Brodbeck's, with 1046 pounds of butterfat, 22,068 milk and 697 protein rolling herd average on 48 cows.

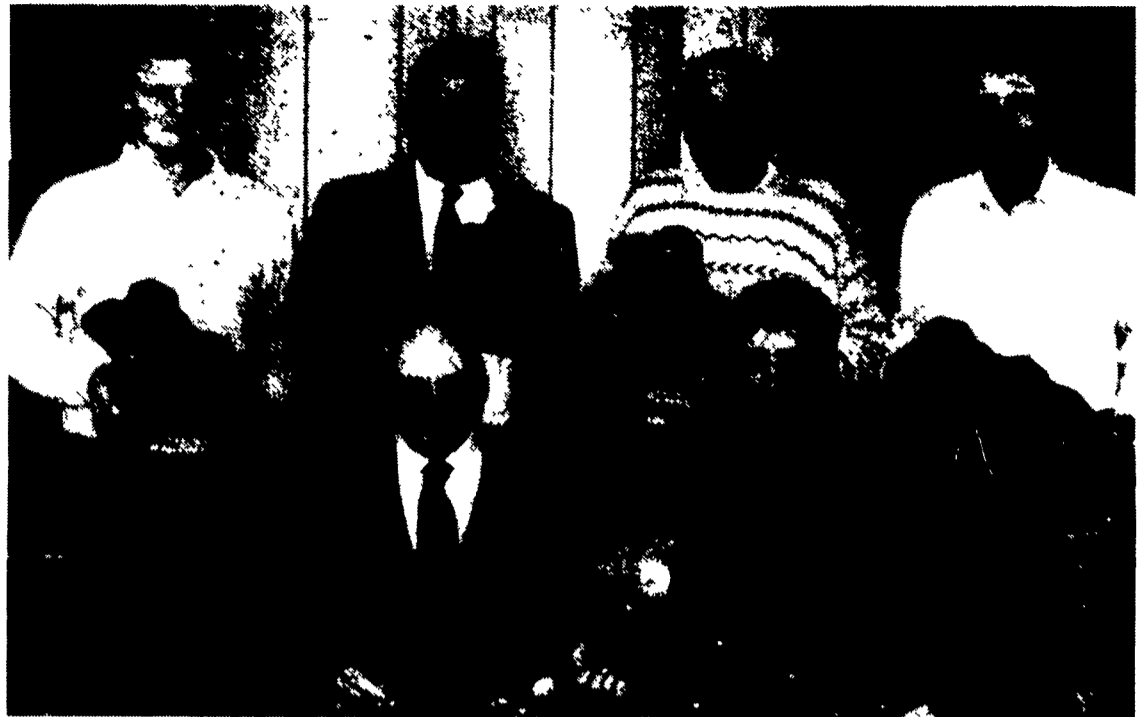
Two herds shared honors for protein production improvement over the previous year. In the 600-pound category, the 94-head herd of Earl Furhman, Hanover, boosted production by 51 pounds, from 648 to 699 pounds. Hushon Farms, Delta, saw an increase of 103 pounds, from 570 to 672 pounds of protein, earning Vincent Hushon the top improvement award in the 500-pound category.

Hushon Farm also earned the Herd Management Award for 1994, with a total herd production point-score increase of 106 points. The 78-head herd completed the test year with a rolling herd average of 21,021 pounds milk, 740 pounds fat and 673 pounds protein.

Winner of the low Somatic Cell Count was Ed Calhoun, Glen Rock, with an average count of 127,000. Calhoun has been a perennial winner in the county for the SCC honors category.

In the individual cow awards,

(Turn to Page A21)



York County dairy producers honored by the DHIA include, from left, seated, Howard Fetrow and William Myers. Standing, Ron Fetrow, Robert Smyser, Ralph Fetrow, and Ed Calhoun.

**ALL PURPOSE CART**

Photo Is 15 Cu. Ft. Size

- \* 2 Sizes In Stock
- \* 8 Cu. Ft. Assembled w/Solid Front w/20" Wheels Pneumatic, \$129.00
- \* 15 Cu. Ft. Assembled w/Removable Front w/26" Wheels Pneumatic, \$160.00

**Elam M. Ebersol**  
558 Gibbons Road  
Bird-In-Hand, PA 17505  
Call Answering Service  
717-354-5561  
Dealer Inquiries Welcome

**QUALITY MIXER AT A QUANTITY PRICE**

**BUY A REAL** **Reel Auggie 2000 Series Mixer**

**Blender/Feeders**

**Specializing In TMR Mixer Set-Ups. Call Us Today!**

Just what makes the "Reel Auggie" better? You can finally mix and feed all of your ration ingredients including long stem dry hay and other tough roughages that previously could not be included in your mixed ration.

**Used Knight 2250 Mixer Feeder**  
Excellent Cond., 1 Yr. Old  
**SPECIAL \$11,900**

- 5-600 Bale Processor - Demo ..... \$1,850
- Weightronic Scales, Model 700E, Fits Any Brand Mixer, 5 Yr. Warranty
- VD 3000 Gal. Manure Tank, For Sale Or Rent
- Van Dale Manure Pump & Agitator

**We Will Service All Brands Of Electronic Scales & Most Brands Of Mixers**

**MILLCREEK FENCE & FARM SYSTEMS**  
2285 Old Philadelphia Pike  
Lancaster, PA 17602 — (717) 396-8987

**TSC TRACTOR SUPPLY CO.**

**MASSEY HARRIS "44" SPECIAL**  
Features a steerable narrow front end, with "44 Special" graphics. Constructed of die-cast metal with rubber tires. 1/16 Scale. 52-10122  
**18<sup>99</sup>**

**PRECISION SERIES™ FARMALL F-20 TRACTOR**  
Features very fine and intricate detailing, including steerable round spoke tires, moveable parts. Medallion and historical booklet also included. 1/16 Scale. 52-14187  
**99<sup>99</sup>**

**GREEN ROW CROP TRACTOR WITH LOADER**  
Steerable front wheels. Loader bucket raises, lowers and dumps. Realistic detail. Die-cast metal construction. 1/16 Scale. 42-10709  
**12<sup>99</sup>**

**CASE BULLDOZER**  
Features include a cab roof, moveable rubber tracks and a blade that raises and lowers. This bulldozer will provide many years of fun. Die-cast metal construction. 1/16 Scale. 42-10008  
**29<sup>99</sup>**

**JOHN DEERE COMBINE**  
Features authentic detail with interchangeable corn and grain heads, moveable grain spout, tinted windows and free rolling wheels. Die cast metal. 1/28 scale. 52-10325  
**34<sup>99</sup>**

**JOHN DEERE UTILITY TRACTOR WITH LOADER**  
Features include large tires, detailed cab interior and working front end loader. Loader moves up and down, and the bucket tilts and dumps. 1/16 Scale. 52-16101  
**29<sup>99</sup>**

**ERTL TOYS**

**Prices Guaranteed Through December 10th**  
**LAYAWAY AND FINANCING AVAILABLE**

**PENNSYLVANIA,**  
CARLISLE, 1188 Spring Rd., formerly Arnold Motors, 717-245-2334, Mon-Thurs 8-7; Fri 8-8; Sat 8-6; Sun 9-4  
LANCASTER, Rt. 896 South of Rt. 30 E. Hartman Bridge Road, 717-687,7642-3, Mon-Thurs 8-6; Fri 8-8; Sat 8-6; Sun 9-4  
LEBANON, 720 Quentin Road, 717-274-2106, Mon-Fri 8-8; Sat 8-6; Sun 9-4  
POTTSTOWN, 335 West High St., 610-327-4485, Mon-Thurs 8-7; Fri 8-8; Sat 8-6; Sun 9-4  
YORK, 2400 West Market St., 717-792-3676, Mon-Thurs 8-7; Fri 8-8; Sat 8-6; Sun 9-4  
**NEW YORK,**  
SHERRILL, E. State Street, State Rte. 5, 315-363-0860, Mon-Thurs 8-6; Fri 8-8; Sat 8-6; Sun 9-4  
**MARYLAND,**  
WESTMINSTER, 895 Lady Rd., 410-848-2060 or 2093, 876-5892, Mon-Fri 8-8; Sat 8-6; Sun 9-5