

Winco, Fidelity & Katolight Alternators,  
Automatic Generators, Diesel - LP Gas.  
Repair service on all alternators.

Call before you buy

**WALLIS GENERATORS**

Carbondale, PA

717-282-2342 1-800-231-2968

**JD 350 Crawler  
Loader w/PTO  
\$6,995**

**Manor  
Equipment, Inc.**  
Wheatfield Rd.  
Sinking Springs, PA  
(610) 678-0828

Oliver Cletrac model  
AG-6, wide gauge  
model with Anderson  
dozer attach, side  
mount mower, good  
condition, low engine  
hrs.....\$5,900  
Roadscraper, pull type,  
176" wheel base, \$950  
**LEE BROS.**  
**CRANBERRY FARM**  
609-726-9292 Days  
609-726-1214 evenings

**Norm Shores & Son Tractor**

RR 5, Towanda, PA 18848

717-265-9014

**USED TRACTORS**

JD 4440, cab & air, quad, 1982 model,  
weights all around,  
20.8x38 tires, nice condition  
JD 4620 w/cab, duals & weights, front  
wheel assist, nice clean tractor  
JD 4320, Factory Cab, Duals, Weights,  
Quick Hitch, Absolutely 1-Of-A-Kind!  
Ford 7710, Factory Cab, Air, Dual  
Power, Dual Remotes, Excellent  
Ford 7700, Cab, Air, Dual Power, 38"  
Tires, Blue Power Special, Nice  
Tractor  
Ford 7700, Dual Power, Dual Remotes,  
Weights, 2400 Hours, Excellent  
Ford 6610 Series II w/Dual Power,  
Dual Remotes, Dual PTO, Equipped  
w/Ford 7210 QT Loader, 1000 Hours,  
Excellent  
Ford 5610 Dsl., Dual Power, Dual  
Remotes, w/QT Loader, 7' QT  
Bucket, Ind. Valve, Very Nice  
Ford 5610 Dsl., Dual Remotes, 1987  
Series II, 1990 Hours, Very Nice  
Ford 801 Gas 5-Spd., 1 PTO, PS, Weights,  
Chains, Rear Blade, Very Nice  
Case IH 5130 Maximum, 4WD, cab, air,  
power shift, 1300 hours, excellent

Case 2090, Cab, Air, PS, Front Weights  
18x38 Tires, Very Nice  
Case IH 685, 4WD, w/IH 2255 Loader,  
700 Hours, Excellent  
IH 1086, 79 Model, Red Power, Cab,  
Air, Weights, Excellent  
IH 986, 81 Model, Cab & Air, Radials,  
2400 Original Hours, Immaculate  
IH 886 4 Post ROPS, w/38" Tires,  
2 Remotes  
IH Hydro 84 w/38" tires and bar axles,  
2 remotes, IH 2250 quick attach  
loader  
MF 3545, 2 PTO's, 2 remotes, 20.8x38,  
non-cab, extra nice  
AC 8070, 1984 model, Cab, Air, Weights,  
4WD, Power Shift, Excellent  
AC 7045, Cab, Air, Power Shift, Weights  
All Around, Good Tractor  
White 2-70, 4WD, 2 remotes, 3 spd.  
over/under, good condition  
White 2-135, cab, air weights, 2 PTO's,  
2 remotes, nice original condition  
White 2-135, 4WD, cab, air, 2 remotes,  
2 PTO's, 2400 hours, extra nice  
White 2-155, Cab & Air, Duals, Weights,  
Triple Outlets, Very Nice

**FNH 785 Skid Steer, 72" bucket & pallet forks,  
boom hyd., very clean units, choice of 2**

**FORAGE WAGONS**

Gehl 970, 3 Beater w/Roof w/Gehl  
Tandem Wagon, Used Very Little,  
Excellent  
Dion Forage Wagon, 3 beater w/roof &-12  
ton tandem, excellent, choice of 3  
Gehl 970, 3 beater, no roof, w/JD 12-ton  
tandem

Gehl 970, 3 beater w/roof & JD 12-ton  
tandem  
Rex 3 beater w/roof tandem axle wagon,  
steel slides, very nice condition  
(Lamco)

**USED FORAGE EQUIPMENT**

JD 5400 Self Propelled Harvester  
Cab, 4WD, 4RN Head, Nice Clean Unit  
NH 900, tandem axle, metal alert,  
electric controls, hyd. tongue, choice  
of heads  
Gehl RC800 recutter blower, very nice  
condition  
Gehl 1060 tandem axle, electric controls,  
hyd. tongue, 7' pickup & 2RN corn  
Gehl FB88 forage blower, very nice  
Gehl 1200 w/Electric Controls w/3RN Corn  
Head, Good Condition

Gehl 600 w/Manual Controls, 540 PTO,  
Electric Sharpener And Hay Pickup  
Head  
NH 892 w/824 Corn Head And Hay Pickup  
Head, Electric Controls, Very Nice  
NH 892 w/3RN Auger Base & 8' Pickup  
Head, Electric Controls, Good  
Condition  
JD 3960 w/2RN Or 2RW, Electric Controls,  
Hyd. Tongue, Nice Original Harvester

**USED PLANTERS AND DRILLS**

IH 510 18x7 DD drill w/3 compartments, excellent  
JD 7000 4R conservation, monitor, dry fert. & insecticide boxes  
JD 7000 4RN, dry, plateless, insecticide boxes

**USED PLOWS AND CHISELS**

Ford 151 4x18 spring auto reset w/spring loaded coulters, very nice (same as White 508)  
IH 720 4x18 auto reset w/coulters & gauge wheel  
Oliver 588 4x18, auto reset w/coulters & gauge wheel  
JD 1710 9-tooth mulch tiller w/walking tandems, very nice

**USED DISCS AND HARROWS**

Bush Hog 1440 18' hyd. wing fold rock flex finishing disc  
Brillion 10' double packer  
JD 16' transport type spring tooth harrow, good condition  
McConnell 16' transport spring tooth harrow  
White 253 12' finishing disc w/tandem wheels, very nice  
White 265 11' heavy frame cutting disc w/tandem wheels & 24" blades

**USED HAY EQUIPMENT**

Heston 1014 12' hydro swing haybine, stub guards, nice clean machine  
FNH 489 Haybine w/Stub Guards, Good Rolls, Nice  
NH 479 haybine, very nice  
NH 258 rake w/dolly wheel & rubber teeth  
NH 316 w/#70 thrower, excellent

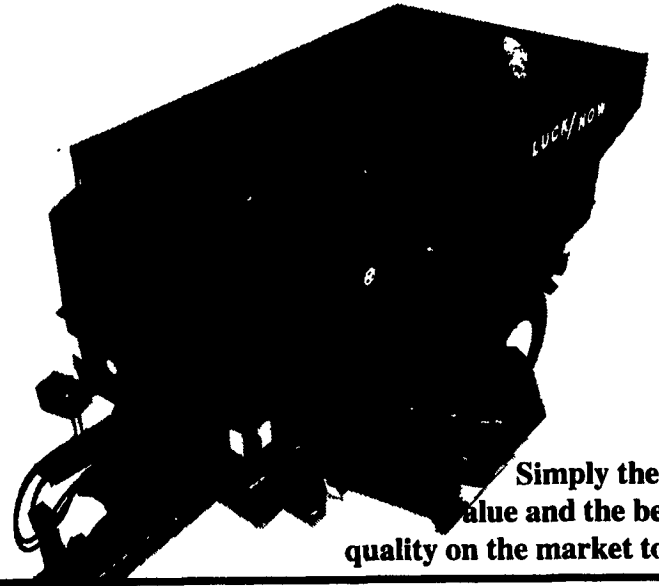
**USED HARVESTER HEADS**

Gehl 2R Snapper head, very nice  
NH 770 Hay Pickup Head  
NH 3 RN Auger base package w/8' pickup

**LOADERS**

Allied 760 QTw/7' bucket and brackets  
for JD 4020

**THE LUCKNOW MIXER WAGON**



Simply the best  
value and the best in  
quality on the market today.

Call your nearest dealer today.

N.J., DEL, MD EASTERN SHORE  
**JONES DAIRY SERVICE**  
(609) 267-0198

MARTINSBURG, PA  
**WINELAND EQUIPMENT, INC.**  
(814) 793-2109

LEOLA, PA  
**M.M. WEAVER & SON**  
(717) 656-2321

**USED  
TRACTOR  
PRICE GUIDE**

**1994  
EDITION**

For over 43 years, Intertec has made a business of knowing the used equipment market. That's why we're able to offer you comprehensive tractor pricing, specification and loan value information. Introducing the **1994 Used Tractor Price Guide**. Covering over 25 manufacturer's models from 1970-1992, this handy reference provides you with detailed information on engine size, transmission speeds, PTO hp, drawbar hp, shipping weight, approximate retail price when new, estimated trade-in values (high and low) and more. You'll also find special sections covering tractor serial numbers and their locations. So if you're buying or selling a tractor... or just interested in model specifications, turn to the **1994 Used Tractor Price Guide** for complete reference information. 1994 editions/5.5x8" softbound/288 pages.

Order No. U5194 \$9.95

Shipping and Handling \$4.50 per order MC/VISA/CHECK/C.O.D. Free Colored Livestock & Tractor Book Catalog.

**DIAMOND FARM BOOK PUBLISHERS**

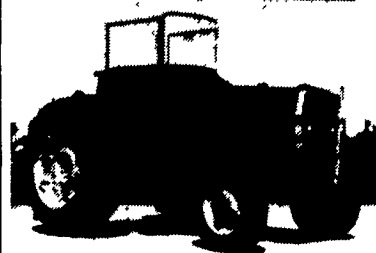
Dept. LFD Box 537, Bailey Settlement Rd.,  
Alexandria Bay, NY 13607

Ph: (613) 475-1771 Fax: (613) 475-3748

**Hinson-Femco Weather Brakes & Enclosures**

Make your equipment a pleasure to operate  
in even the coldest weather

**Weather Brakes For Most  
Makes and Models**



- Utilize engine heat for cold weather comfort
- Install in minutes for winter-time use and remove quickly for summer comfort
- Heavy, tear-resistant vinyl, laminated to tough nylon, over steel frame
- Large 3-section windshield of polished clear vinyl for good visibility
- Available with soft tops and rear curtains for extra comfort
- Engine flaps adjustable for heat regulation
- All seams double-stitched & locked
- Designed & tailored specifically to fit your tractor or other product (Not a universal "fit-all")

**2 Post Rops & 4 Post Rops  
Enclosures for John Deere,  
Ford and Case IH Tractors**



- Specially designed of glass, steel and tough, tear resistant vinyl, laminated to nylon to protect operator from wind, rain and snow at modest cost
- Tinted, tempered windshield, and polished clear vinyl side and rear windows for excellent visibility
- All seams double-stitched & locked for appearance & long life
- Large doors for easy access

**Order Now - Limited Supply and Stocks on hand**

