

Central U.S. Carlot

Beef Report
 Wednesday, Nov. 30, 1994
 Report supplied by USDA
 CENTRAL U.S. CARLOT BEEF REPORT (INCLUDES THE MAJOR PRODUCTION AREAS IN THE MIDWEST AND TEXAS) AS OF 11:15 A.M. COMPARED TO MONDAY'S 3:00 P.M. REPORT: UTILITY CARCASSES STEADY IN A NARROW TEST; CUTTER NOT ESTABLISHED; BULLS 2.00 HIGHER. DEMAND AND OFFERINGS LIGHT.

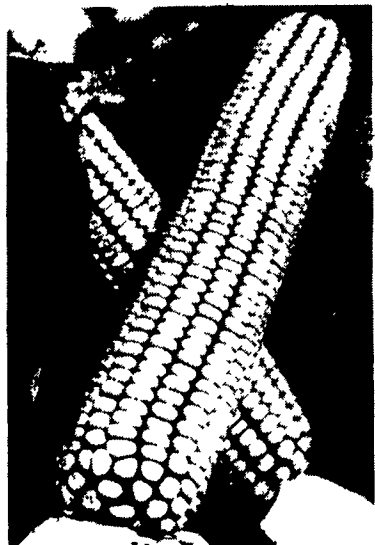
COW AND BULL CARCASSES
 FOB OMAHA BASIS
6 LOADS REPORTED
 UT, BRK 2-4 450 AND UP, 2 LOADS, RANGE 66.00, LATEST ESTB. MKT. 66.00.
 UT, BNG 1-3 400 AND UP, 2 LOADS, RANGE 70.00, LATEST ESTB. MKT. 70.00.
 CUTTER 1-2 350 AND UP, LATEST EXTB. MKT. 76.00 B.
 BULLS 500/UP YG 1, 2 LOADS, RANGE 83.00, LATEST ESTB. MKT. 83.00.
BONELESS PROCESSING BEEF/BEEF TRIMMINGS

157 LOADS REPORTED
 FRESH 90% BONELESS BEEF STEADY TO 4.00 HIGHER; 85% FIRM TO 2.50 HIGHER; 75% STEADY TO 1.00 HIGHER; 65% 7.50-8.00 LOWER THAN LAST TEST. DEMAND MODERATE TO FAIRLY GOOD FOR MODERATE OFFERINGS. BEEF TRIMMINGS LOWER ON LIGHT DEMAND AND MODERATE OFFERINGS.
 FOB OMAHA BASIS
 90% FRESH, 44 LOADS, RANGE 108.5-113.00 WT. AVG. 110.26.
 90% FZ, 6 LOADS, RANGE 113.00-113.50, WT. AVG. 113.33.
 85% FR, 3 LOADS, RANGE

98.5-100.50, WT. AVG. 99.67.
 85% FZ, UNQUOTED.
 75% FR, 6 LOADS, RANGE 75.0-76.00, WT. AVG. 75.67.
 75% FZ, UNQUOTED.
 65% FR, 7 LOADS, RANGE 57.00-59.00, WT. AVG. 58.00.
 65% FZ, UNQUOTED.
 50% FR, 45 LOADS, RANGE 27.00-31.00, WT. AVG. 28.78.
 50% FZ, 5 LOTS, RANGE 33.00, WT. AVG. 33.00.
 50% BX, UNQUOTED.
 BULL 92-94, 2 LOADS, RANGE

115.0-116.0, WT. AVG. 115.50.
 FOB EAST TX & OK
 90% FR, 23 LOADS, RANGE 109.0-111.0, WT. AVG. 110.26.
 90% FZ, 3 LOADS, RANGE 114.0-115.00, WT. AVG. 114.67.
 85% FR, UNQUOTED.
 85% FZ, UNQUOTED.
 85% FR, UNQUOTED.
 75% FZ, UNQUOTED.
 75% FR, UNQUOTED.
 65% FR, UNQUOTED.
 65% FZ, UNQUOTED.
 BULL 92-94, UNQUOTED.
 CAF NORTHEAST AREAS
 90% FR, 13 LOADS, RANGE 115.0-116.0, WT. AVG. 115.46.
 90% FZ, UNQUOTED.
 85% FR, UNQUOTED.
 85% FZ, UNQUOTED.
 75% FR, UNQUOTED.
 75% FZ, UNQUOTED.
 65% FR, UNQUOTED.
 65% FZ, UNQUOTED.
 ABCDE AFTER QUOTES REPRESENTS DAYS SINCE LAST ACUTAL MARKET TEST. QUOTES ARE DROPPED AFTER 5 DAYS OF NO TEST OR BEFORE IF THEY NO LONGER REFLECT CURRENT MARKET CONDITIONS.

When So Much Depends On Planting the Right Seed...



You're In Good Company.

When you have to make seed decisions that will determine the success of your operation, your Northrup King dealer is good company. He offers advice you can trust.

Your dealer knows you can't afford to plant anything less than the best. He also knows you need more than good seed. You need seed that is right for your fields and the way you farm.

As a neighbor, your Northrup King dealer knows this area. He knows the land and what questions to ask to help you choose varieties that can yield maximum return from your fields.

Your dealer listens to your needs. He also has a lot to talk about, drawing on over 110 years of Northrup King history, experience and innovation.

Northrup King leadership in reasearch, genetic engineering, biotechnology and seed technology represent a continuing investment in the future. We want to make sure you have seeds that will meet not only today's needs, but tomorrow's as well.

Our commitment to quality carries through from research programs to precise production and seed conditioning. Innovative technology helps Northrup King seed achieve its full potential under your management.

That's what really counts...the results you get in the fields.



The new Q-Bit™ seed container, in addition to being a more efficient way to handle seed, it is better for our environment. As part of the Load and Go™ seed handling system, the Q-Bit container is one more example of technological leadership.



NORTHROP KING

For Details See Your Participating Northrup King Dealer

N4242 RM: 98-102

A top yielding hybrid, N4242 flowers early and dries down very fast to offer maximum return and profitability. It performs extremely well in either drought or cool wet growing seasons. Broad adaptability makes this a popular dual-purpose corn for grain or silage in northern Indiana, Ohio and early maturity areas of Pennsylvania. Superior stalk strength and ear retention. Works well with reduced tillage and continuous corn. Adapts to a wide range of soils and plant densities. Due to early maturity, N4242 is not generally recommended for dryland sandy soils of northwestern Indiana.

N5220 RM: 105-109

An exceptional dual-purpose hybrid for grain or silage, N5220 displays good standability for top yields. Early denting and extremely fast drydown help this newer hybrid deliver very heavy test weight, high quality grain throughout northern Indiana and Ohio, plus medium-early maturity areas of Pennsylvania. Attractive, healthy plants are best adapted for moderate to high densities on medium to fine textured soils. Responds well to crop rotations.

N6822 RM: 110-114

An outstanding newer hybrid for the Eastern Corn Belt, N6822 displays very good staygreen to maintain high yield potential under continuous corn or standard rotations. Performs well on medium to fine textured soils when planted at moderate to high densities. Semi-flex ears produce good quality, heavy test weight grain. Very good standability and drought tolerance protect yield potential.

S 39-41

(X9339) RM: Late Group III

Achieving a new level of Phytophthora root rot protection, this high yielding variety is resistant to all races found throughout our area (from 1 to 11). New S 39-41 features the Rps1-k gene, which makes it resistant to all prevalent races. With excellent emergence, it is a superior choice for no-till drilling. Very good standability and stress tolerance promote optimum yields. It shows higher protein levels, too. Adapts to all row widths. Similar maturity to S 39-11 and Williams 82. PVP

AG-RESOURCES, INC.
 Turbotville, PA
 717-649-5161
AGRONOMY CENTER
 Thompsonstown, PA
 717-535-5151

BEDFORD FARM BUREAU
 Bedford, PA
 814-623-6194

LARRY BOWER
 Linden, PA
 717-323-3546

BROOKLAND MILLS, INC.
 Mc Veytown, PA
 717-699-6772

BRUCE B. GAMBLE & SONS
 Concord, PA
 717-349-2670

HAKES FARM & SEED SERVICE
 Red Lion, PA
 717-244-2754

EDWARD HESSONG
 Greencastle, PA
 717-597-9534

ERTH-RITE, INC.
 Gap, PA
 717-442-4171

MITCH FUNK
 Mercersburg, PA
 717-326-5147

HORRACE HEINDEL & SON
 York, PA
 717-244-3780

HYDRO/KIRBY AGRI-SERVICES
 Lancaster, PA
 717-299-2541

GORDON ISENBERG
 Alexandria, PA
 814-699-9323

JOHN D. CASSEL & SONS
 Hummelstown, PA
 717-598-9022

LYN-LEE FARMS
 State College, PA
 814-238-1233

MENSINGER BROS.
 Nescopeck, PA
 717-378-3388

GENE MILLER
 Catawissa, PA
 717-799-5760

RALPH MILLER
 Womelsdorf, PA
 215-588-2642

SHADE MOUNTAIN SUPPLY
 Port Royal, PA
 717-436-8017

RICHARD MOWERY
 Montgomery, PA
 717-547-2387

MIKE WASCOK
 Dunbar, PA
 412-626-3993

HERBERT MYERS
 Lewisberry, PA
 717-697-9903

OBERTHOLTZER DAIRY FARM
 East Earl, PA
 717-354-0832

RHOADS MILLS INC.
 Selingsgrove, PA
 717-374-8141

RICHARD H. KAUFFMAN
 Columbia, PA
 717-684-2683

SCOTT SHIPMAN
 Turbotville, PA
 717-649-6133

JOHN SNOOK
 Millinburg, PA
 717-998-9967

STEPHEN SNYDER
 Millersburg, PA
 717-362-3735

SOMERSET MILLING CO.
 Somerset, PA
 814-445-7504

RICHARD STONER
 Alverton, PA
 412-887-8854

TYRONE MILLING INC.
 Tyrone, PA
 814-684-3400

WAYNE FEED SUPPLY
 Dillsburg, PA
 717-432-9623

WAYNE FEED SUPPLY
 Chambersburg, PA
 717-263-4121

JERRY WEIGHT
 Bellefonte, PA
 814-625-2281

JAMES ULRICH
 New Oxford, PA
 717-624-6187

KENNETH ZURIN
 Mt. Joy, PA
 717-896-6736

MARYLAND

ALAN HEFLIN
 Keymar, MD
 301-888-7842

JACK HEFLIN
 Woodsboro, MD
 301-898-5255

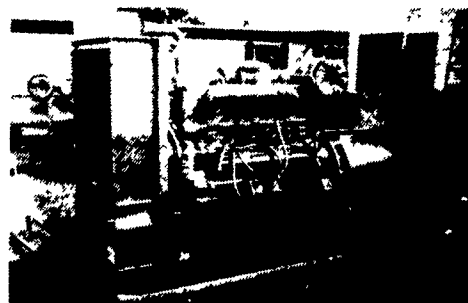
GORDON FLICKINGER
 Union Bridge, MD
 410-775-7394

STEVE SHIPMAN
 District Sales Manager
 717-726-6958

HELP FOR A BUDGET HEADACHE



IN THE WANT ADS



GENERATORS

Sales ★ Service ★ Rentals
 * Complete Generator Systems
 * PTO * Portables * 2-1600 KW
 "We Service It If You Have It And Sell It If You Need It"

34 W. Mohler Church Rd.
 Ephrata, PA 17522

Tel: 717-738-0300
 Fax: 717-738-4329



GRAIN DIVISION

**BUYING AND SELLING
 SOFT RED AND WHITE
 WHEAT**

Picked Up and Delivered Bids Available
 Prices Quoted for Spot or Future Delivery
 Prompt Payment

**ASK FOR
 BILL KRUEGER
 (800) 487-1474**

**WE WANT TO BUY
 YOUR WHEAT**