

EXCELLENT WORK TRUCKS

'94 FORD 350 STAKEBODY
Diesel AT, XL Trim. #4962
Leftover Closeout Price



'94 FORD F350 DUALY
Turbo Diesel, 5-Speed, XLT-Nice Truck
#4997

SHEEHY LEBANON

FORD • MERCURY • LINCOLN

9-9 Daily 9-5 Saturday Sheehy Hotline (717) 212-7671 or (517) 5291

20TH & CUMBERLAND STS • RT. 422 WEST

35 TRUCKS & TRAILERS

SAND AND SALT SPREADERS

INSERT SPREADER



Features:

- Self Contained
- 1.87 Cubic Yard
- 8.5 HP 1/C Gas Engine
- 14" Diameter Stainless Steel Spinner Disc With 4 Vanes

IN STOCK NOW \$3,597.00

TAILGATE SPREADER



Features:

- 12 V Powered
- 600 Lb. Capacity

IN STOCK NOW \$899.00

RINGO HILL FARMS EQUIPMENT CO., INC.

1624 RT. 212 PLEASANT VALLEY
QUAKERTOWN PA 18951

(610) 346-7340 FAX (610) 346-8041

OUR CHRISTMAS TO YOU!



**36 MONTH
45,000 MILE EXTENDED
WARRANTY**

**AT PEIFFER BROS. WE HAVE
TAKEN THE GUESS WORK OUT OF
USED VEHICLE BUYING. ALL
VEHICLES RECEIVE A THOROUGH
CHECK UP AND RECONDITIONING
BY OUR LICENSED, CERTIFIED MECHANICS.**

AND NOW THROUGH THE MONTH OF DECEMBER
ALL VEHICLES INCLUDE A
30-90 DAY 45,000 MILE EXTENDED WARRANTY
FAIR PRICES • QUALITY VEHICLES • GREAT SERVICE

TRUCKS

- '91 GMC C1600 SLE.....5 Spd, AC, PW, PL, Tilt, Cruise
- '90 Chevy C3500 Ext. Cab.....Choo-Choo Custom, 454 V8, Loaded
- '90 Chevy K1500 Shortbed 4x4.....350 V8, 5 Spd, PW, PL, Alloy Wheel
- '89 Chevrolet K1500 4x4.....350 V8, AT, AC, PW, PL, Tilt, Cruise
- '88 Chevy C1500.....Scottsdale, V8, AT, AC, PS, PB
- '88 Chevy S-10 Ext. Cab.....V6, AT, AC, 4x4
- '88 Ford F350 Crew Cab Dually 460.....V8, AT, AC, PW, PL, Custom
- '88 Ford Ranger "SuperCab" XLT Ext. Cab.....5 Spd, AC, PS, PB
- '87 Ford Ranger SuperCab "STX".....AT, AC
- '85 Ford F-150.....6 Cyl, 5 Spd, PS, PB, Cap, Running Board
- '85 Ford Ranger XLT 4x4.....V8, 5 Spd, PS, PB, Cap, Alloy Wheels

SPORTY UTILITY

- '91 S-10 Blazer Tahoe.....4 3L V6, AT, AC, PW, Tilt, Cruise
- '91 S-10 Blazer Tahoe.....4 Dr, 4 3 V6, AT w/OD, Loaded
- '90 Geo Tracker 4x4.....Hard Top, 5 Spd, AC, PS, PB
- '90 Jeep Cherokee Laredo.....4 Dr, 6 Cyl, AT, AC, PW, Tilt, Cruise
- '90 Jeep Cherokee.....4 Dr, 6 Cyl, AT, AC, RWD
- '89 Jeep Cherokee 4x4.....4 Dr, 6 Cyl, 5 Spd, AC, PS, PB
- '89 Cherokee Wagoneer LTD.....6 Cyl, AT, AC, PW, Tilt, Cruise
- '88 GMC Suburban C-1500 4x4.....5 7 L V8, AT, AC, Tilt, Cruise, 9 Pass
- '88 Jeep Wrangler 4x4.....Hardtop, 5 Spd, AM/FM Cass
- '86 Cherokee Sport 4x4.....5 Spd, PS, PB, AM/FM Cass
- '78 Dodge Ramcharger.....V8, AT, PS, PB, Low Miles

VANS

- '90 Chevrolet Astro AWD.....8 Pass, V6, AT, AC, PW, PL
- '88 GMC Safari Cargo.....4 3 L V6, AT, AC, PS, PB
- '88 Chevrolet Elite.....22 Ft. Motorhome, 350 V8, Sleeps 6
- '87 Chevy Astro Van.....V6, AT, AC, PS, PB
- '83 Chevy G-20 Southern Coach.....Conversion Van, Loaded

COUPES & SEDANS

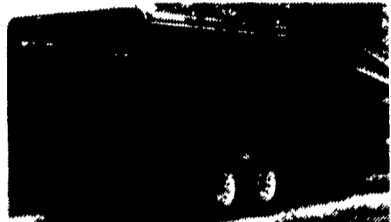
- '91 Chevy Z-24 Cavalier.....3 1 L, V6, AT, AC, PW, PL, Tilt, Cust. Wheels
- '92 Geo Storm Cpe.....AT, AC, 13,000 Miles
- '92 Geo Prism Sdn.....4 Cyl, AT, AC, PS, PB
- '91 Chevy Beretta.....V6, AT, AC, PW, PL, Tilt, Cruise, Low Miles
- '91 Chevy Lumina Euro.....V6, AT, AC, PW, PL, Tilt, Cruise
- '90 Chev. Beretta Coupe.....4 Cyl, AT, AC, PS, PB
- '90 Toyota Tercel.....2 Dr Cpe, 5 Spd, AC
- '88 Chev. Caprice Classic, V8, AT, AC, PW, PL, Tilt, Cruise, Lo Mi, Like New

PEIFFER BROS

Guaranteed Used Cars & Trucks

807 South 4th St. & Rt. 61, Hamburg, PA
610-562-0100 800-635-4888
Sales Department Hours: Weekdays 9-9; Sat: 9-5
Service Hours: Weekdays 8 to 5

FEATHERLITE TRAILERS



SNOWMOBILE TRAILERS

2 and 4 Place Enclosed



**ECONOLITE
STEEL
FLATBEDS**

**TWO HORSE
THOROUGHbred**

WITH
DRESSING
ROOM **\$5995**

4161 Oregon Pike
Ephrata, PA 17522



STAR Chevrolet • Oldsmobile • Geo
627-1220 or 859-7700
AT THE BROWNSTOWN EXIT OF RT. 222

EBY USED EQUIPMENT

BODIES

- (2) 12' Eby Cattle Bodies
- 15' Eby Cattle Body
- 20' Eby Cattle Body

HAY BODY

- 1989 Eby 24'x8' Alum. Flatbed Body w/ Cab Rack

TRUCK

- 1982 20 Ft. Hostetter Wood Cattle Body on '82 GMC Truck

GOOSENECKS

- *New 1995 Eby 16'x7'x7' Wrangler
- 1993 Eby 24'x8' Ruff Neck
- 1992 Eby 20'x6' Ruff Neck
- 1988 Eby 26'x7' Ruff Neck
- 1986 Eby, 24'x8' Ruff Neck

HORSE TRAILERS

- 1986 Jackson 21'x6'x8' 4 Horse Gooseneck
- 1979 Kingston 14' 2 Horse Bumper

M.H. Eby, Inc.
1194 Main Street (Route 23)
Blue Ball, PA 17506
(717) 354-4971 (800) 292-4752
FAX (717) 355-2114
4435 State Route 29
West Jefferson, OH 43162
(614) 879-6901 (800) 752-0507
FAX: (614) 879-6904

Agriculture Moves on EBY Bodies

M.H. Eby custom-builds aluminum truck bodies for the agri-transportation market. Nobody offers more sizes and options in:

- **LIVESTOCK BODIES** - Lengths to 32', choice of heights and widths.
- **GRAIN BODIES** - Lengths to 24'; landscape and general purpose dumps to 12'.
- **FLATBED BODIES** - Lengths to 32', choice of 5 widths.

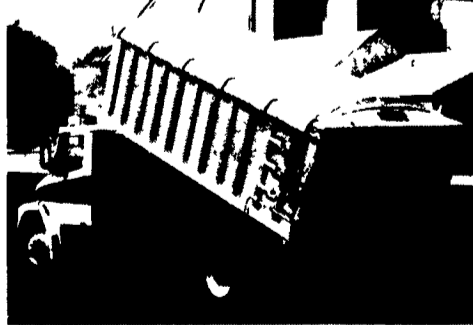
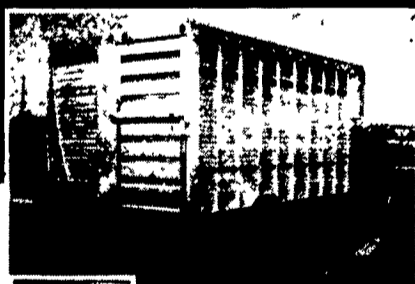
For greater payload capacity, Eby's aluminum design is equal in strength to steel and up to 40% lighter. Our corrosion-resistant components never need painting. That means minimum maintenance, improved appearance and higher resale value.

Eby products have superior standard features. And we offer custom options for virtually any application. Agriculture is your business- building bodies to haul it is ours.



M.H. EBY, INC.

1194 Main Street (Rt 23) • Blue-Ball, PA 17506 • 800/292-4752 • 717/354-4971 • FAX 717/355-2114
4435 State Route 29 • West Jefferson, OH 43162 • 800/752-0507 • 614/879-6901 • FAX 614/879-6904



Let EBY
custom build
one for you.



WANTED:

Used Snow Plows
complete plows,
parts, pieces, etc.
Immediate cash.

call:
**YARNALLS
EQUIP**
610-273-9200

36 REAL ESTATE

Lingonier Horse Farm, 42 acres, 15 stalls, orchard, pond, riding ring, great views, neat house. \$249,500. Possible owner financing. (814)733-2867.

135A, 20A open, cabin w/ facilities, 1A pond, 15A lake, 20 miles from Bing-hampton, NY, excellent hunting. Reduced to \$99,000. Must Sell! 717-836-3375.

Bradford County 300 acre operating dairy farm, 90-100 cows, 5 silos all w/ unloaders, 1 sealed unit for shelled corn, 40x60 partitioned equipment shed, 40x160 heifer and machinery shed, 38x70 dry cow and heifer barn, 46 stall calf hutch complex, pipeline 1500 gallon bulk tank, TMR mixer, partially re-modeled 3BR home, Some of the best of the soils. (717)297-2768.