

PSU Conducts 22nd Bull Test

UNIVERSITY PARK (Centre Co.) — A full-capacity group of 75 bulls has been penned at the Pennsylvania Meat Animal Evaluation Center (MAEC) for its 22nd annual bull-testing program.

This group consists of some of the finest bulls available from progressive, performance minded eastern U. S. beef cattle breeders. The bulls, which had to meet minimum requirements for participation in the testing program, include 22 Angus, two Red Angus, 32 Polled Herefords, 15 Simmentals, a pair of Charolais, one Limousin, and one Beefmaster.

The bulls were to be given a 21-day adjustment before being weighed Nov. 8 to begin a 112-day test. Once on test, the bulls are weighed every 28 days, individual feed consumption obtained, and feed efficiencies calculated. Reports are made available to the public periodically.

At the end of the test, total

average daily gain for the group will be calculated, as well as adjusted yearling weights. The bulls will be given a comprehensive breeding soundness exam and scanned ultrasonically to determine fat thickness and loin-eye area.

Up-to-date Expected Progeny Differences (EPDs) must be made available by the owners. Final indexes which compare individual bulls to their breed-group averages are calculated for all bulls.

After the bulls have passed minimum criteria for structural correctness and breed character, approximately the top 75 percent of them will be selected for sale in Pennsylvania's 22nd Annual Performance-tested Bull Sale, scheduled for March 31.

In other news the MAEC is also receiving pens of pigs for the winter swine progeny test. Each pen consists of four to six pigs by

one sire and preferably several litters. The purpose of the progeny test is to evaluate the sire of the tested pigs.

Progeny pigs are delivered to the MAEC weighing between 40 and 65 pounds and given a one-week adjustment. They are then weighed every 14 days until average weight reaches 230 pounds.

As each pen concludes its test, the pigs are slaughtered and a variety of carcass information collected. The gain information, feed efficiencies, and carcass information add up to a comprehensive evaluation of the offspring's sire.

For more information about Pennsylvania's performance testing programs or to request sale catalogs, contact Glenn Eberly, Meat Animal Evaluation Center, 651 Fox Hollow Road, State College, PA 16803, or telephone 814-238-2527 (or 814-865-5857 to leave a message or send a FAX).

FOCUS

dhia

Diane L. Burris, Membership Development,
Call 1-800-DMH-TIGHT for information.
Pennsylvania Dairy Herd Improvement Association
DHIA Service Center, Orchard Road, University Park, PA 16802

How Does Your Herd Compare?

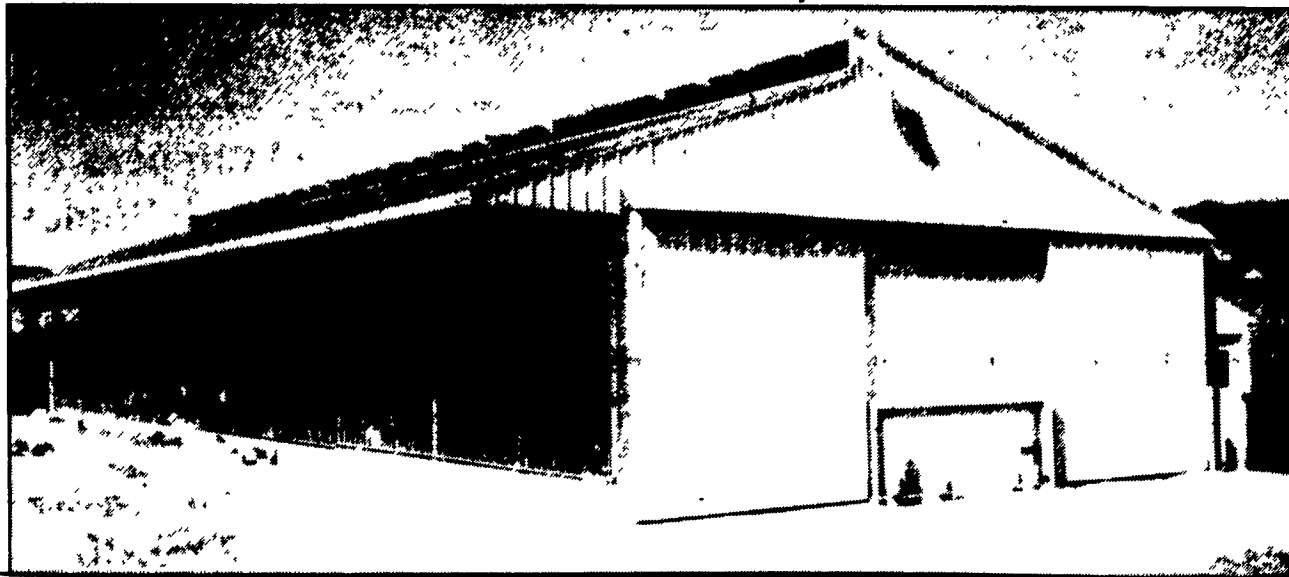
STATE COLLEGE (Centre Co.) — These data are calculated using information pulled from Pennsylvania DHIA's mainframe computer each week. It is a one-week summary representing approximately one-fourth of the herds on test, as they are tested monthly.

These data are valuable from a business management standpoint and can be used for comparing your operations to the averages from about one-fourth of the herds across the state.

DHIA Averages for all herds processed between 11/05/94 and 11/12/94

THANKS & CONGRATULATIONS

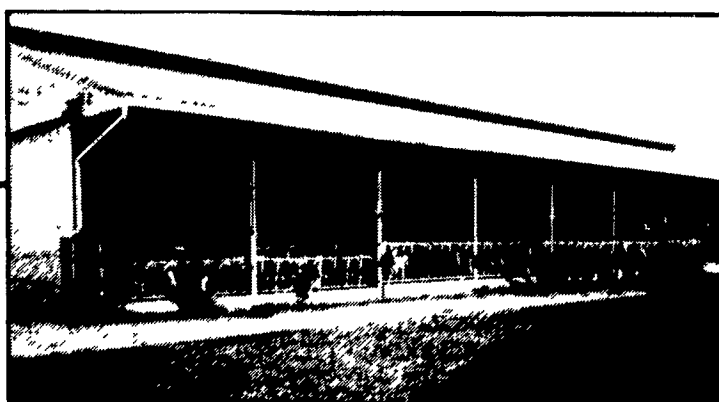
To Mark & Kim Weber Of Mohnton, PA



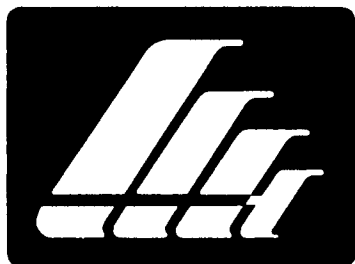
On Their New 36' x 100' Open Front,
Bedded Pack,
Heifer Barn

**This
All New Facility
Features:**

- 8 Heifer Pens
- Roof System With Anti-Bird Perching Feature
- Curtain Ventilation
- Manure Push-Off System
- Paul B. Zimmerman Headlocks & Gates



Come see us for any NEW projects and have Triple H Construction design and construct your new facility.



**717-738-2142
1-(800)-874-7531**

TRIPLE H Construction

430 Springsville Road, Ephrata, PA 17522

Builders of Dairy, Horse, Storage, Residential & Commercial Buildings

Number of Herds Processed	963
Number of Cows Processed	59,459
Number of Cows Per Herd	61.7
Milk Per Cow (Lbs)	18,550
%-Fat	3.70
Fat Per Cow (Lbs)	688
%-Protein	3.21
Protein Per Cow (Lbs)	595
Average Days in Milk Per Cow	319
*Value for CWT Milk(\$)	13.24
*Value for CWT Grain(\$)	8.33
*Value for CWT Hay(\$)	4.21
*Value for CWT Silage(\$)	1.55
*Value for Pasture Per Day(\$)	.26
*Value for Milk Per Cow Per Year(\$)	2,457
*Feed Consumed Per Cow Per Year(Lbs)	
A: Grain	7,030
B: Hay	2,170
C: Silage	15,364
D: Day Pasture	69
*Feed Cost Per Cow Per Year(\$)	
A: Grain	586
B: Hay	91
C: Silage	239
D: Pasture	18
*Total Feed Cost Per Cow Per Year(\$)	935
*Income Over Feed Costs Per Year(\$)	1,521
*Grain to Milk Ratio	1:2.6
*Feed Cost Per CWT Milk(\$)	5.04
Avg Level For 872 SCC Herds	346,372

*Member-generated figures

Average Farm Feed Costs For Handy Reference

To help farmers across the state to have handy reference of commodity input costs in their feeding operations for DHIA record sheets or to develop livestock feed cost data, here's last week's average costs of various ingredients as compiled from regional reports across the state of Pennsylvania. Remember these are averages so you will need to adjust your figures up or down according to your location and the quality of your crop.

Corn, No. 2y - 2.18 bu. 3.89 cwt.
Wheat, No. 2 - 3.38 bu. 5.64 cwt.
Barley, No. 3 - 1.72 bu. 3.67 cwt.
Oats, No. 2 - 1.45 bu. 4.52 cwt.
Soybeans, No. 1 - 5.02 bu. 8.38 cwt.
Ear Corn 65.29 ton 3.27 cwt.
Alfalfa Hay - 107.50 ton 5.38 cwt.
Mixed Hay - 102.50 ton 5.12 cwt.
Timothy Hay - 106.25 ton 5.31 cwt.