

**EMHERR**

**QUALITY PRODUCTS AT FAIR, AFFORDABLE PRICES**  
*If We Do Not Have It, WE'LL GET IT!*

**#1 IN THE INDUSTRY**

**FEED BIN SALE BONANZA**

Model	Ton	Dia.	Height	Reg.	Sale	SAVE
BF7616016	2.76	6'	10.67	692.00	519.00	173.00
BF7626016	4.25	6'	13.33	787.00	589.00	198.00
BF7636016	5.73	6'	15.92	882.00	659.00	223.00
BF7726716	6.6	7'	16.85	1116.00	829.00	287.00
BF773716	8.6	7'	19.52	1232.00	919.00	313.00
BF7746716	10.6	7'	22.19	1348.00	999.00	347.00
BF7756716	12.7	7'	24.85	1575.00	1169.99	396.00
BF7936016	14.3	9'	20.10	1602.00	1199.00	403.00
BF7946016	17.7	9'	22.77	1832.00	1369.00	463.00
BF7956016	21.1	9'	25.43	2063.00	1539.00	524.00
BF7966016	24.4	9'	28.10	2379.00	1779.00	600.00

ABOVE PRICES INCLUDE COMPLETE BASIC TANK WITH ROOF, SIDEWALL, HOPPER, LEGS, BRACING and GROUND CONTROLLED FILL CAPS

BOOTS, AUGERS & FLEX AUGER SYSTEMS AVAILABLE

Sale Price On Bins Are Picked Up At Our Warehouse. Knocked Down

Delivery & Assembly Available

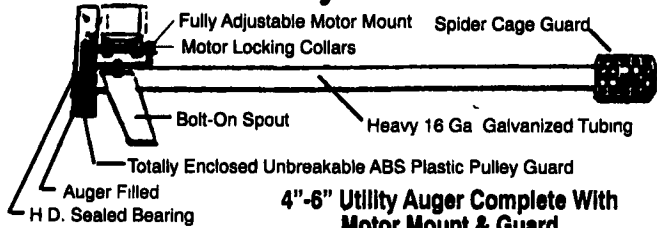
LARGER CAPACITY BINS AVAILABLE

AUGER OPTIONS AVAILABLE:  
 4"-6"-8" Rigid  
 2" up to 5" Flex Auger



**180 DAYS SAME AS CASH** Available Upon Credit Approval

**NEW! HEAVY DUTY GALV. AUGERS by Star-Land**

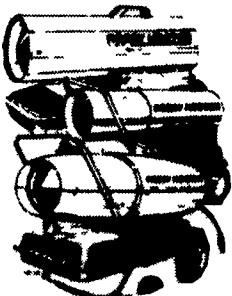


4" x 11' - \$139.94      4" x 21' - \$199.94      6" x 16' - \$254.99  
 4" x 16' - \$179.99      6" x 11' - \$199.99      6" x 21' - \$319.99

**REDDY HEATERS**

Don't let the cold stop you cold. Why freeze trying to enjoy your favorite activities in an unrelated shop, garage or other work area. Uses clean-burning kerosene or #1 fuel oil. Just provide ventilation, plug it in and you're in business

- 35,000 BTU No. R35 ..... \$159.00
- 50,000 BTU No. R50A ..... \$199.00
- 70,000 BTU No. R70A ..... \$249.00
- 110,000 BTU No. R100A ..... \$289.00
- 150,000 BTU No. R150A ..... \$349.00
- LP 35,000 BTU ..... \$179.00
- LP 150,000 BTU ..... \$300.00
- OPTIONAL THERMOSTAT ..... \$39.00



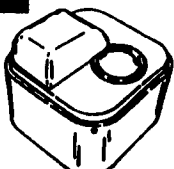
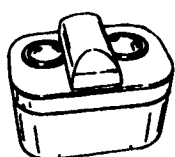
**SNOWBEAR SNOW PLOWS**  
*In Stock!!*

- Lightweight
  - Removable
  - High Strength
- 6 1/2 Ft. .... \$1299.99  
 7 Ft. .... \$1499.99



**MiraFount**

THE ORIGINAL ENERGY FREE WATERER... COPIED BUT NEVER EQUALLED



**1 HOLE MIRAFOUNT**      **2 HOLE MIRAFOUNT**  
 15 Gal. Capacity **\$309.99**      20 Gal. Capacity **\$369.99**  
 Capacity: 50 head beef, 25 head dairy, 30 horses, 1-8" opening No. 33380      Capacity: 150 head beef, 80 head dairy, 2-8" opening No. 3485

**HEY POULTRYMEN**  
 LONG LIFE LIGHT BULBS  
 25 Watt    75 Watt  
 40 Watt    100 Watt  
 60 Watt

130V 5000 Hr Case Lot (120 Bulbs) **35¢ /bulb**

**HEAT LAMP BULBS**  
 Clear-125 W-250 W  
 Your Choice    Reg. 250W **\$1.49 Ea.**    **\$3.69 Ea.**

**PIG HEAT LAMPS**    BJ 209  
 Heavy duty aluminum reflector complete with hanger and double-wire guard. High heat porcelain socket with 1 1/2 SVT UL listed cord (round vinyl) 9' cord Reg. \$5.99 Ea. **SALE \$5.99 ea.**    Bv Case of 10

★Full Line Parts Dept.★  
 ★Sell, Service & Install★

Rt. 272 South  
 14 Herrville Road  
 Willow Street, PA 17584

Ph. 717-464-3321 or  
 Toll Free 800-732-0053

Store Hours:  
 Mon.-Sat. 7:30 AM to 6:00 PM



UPS Shipping Point



11/26

**Md. Recycles Empty Pesticide Containers**

ANNAPOLIS, Md. — Maryland Secretary of Agriculture Lewis R. Riley has announced that the 1994 empty pesticide container recycling program was very successful and surpassed the 1993 program in the number of containers collected for recycling.

The Maryland Department of Agriculture held 24 collection days at six sites located throughout the state. Four collection days were held in Chestertown, Easton, Salisbury, Frederick, Beltsville, and Street during July, August, September, and October. Several collections were also made at pesticide dealer facilities and commercial agricultural applicator sites.

"The inspection, collection, and processing of over 25,000 plastic pesticide containers have reduced the potential for contamination of ground water and Chesapeake Bay while saving valuable landfill space," said Riley.

Maryland's program is a combined effort of state, county, and private industry working together to protect the environment. With the cooperation of Mid-Shore

Regional Recycling, Kent County Public Works, Wicomico Public Works, Frederick County Public Works, Harford County Public Works, Maryland Environmental Service, United States Department of Agriculture, and Ag-Chem Inc., the program has been effective in removing plastic pesticide containers from the waste stream so they can be reused as an energy source or for producing additional plastic containers. Ag-Chem, Inc. of Girdletree, Maryland provided the chipper to grind the plastic containers into flakes, which are transported to a contractor for recycling.

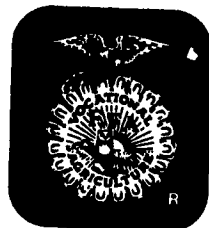
All of the collected pesticide containers from Maryland will be shipped to a recycling facility under contract with the Agricultural Container Research Council (ACRC). ACRC is a nonprofit

corporation dedicated to work with organizations to facilitate the collection and recycling of plastic containers for crop protection products.

"The response of farmers, commercial agricultural applicators, and other pesticide users has been very encouraging. Sites used during the 1993 pilot program experienced a substantial increase in participation during the 1994 program," said Riley.

"Because of the high interest in the program over the past two years, the department will again offer the recycling program during the 1995 growing season," Riley said.

For additional information, contact Mary Ellen Setting, chief of the department's pesticide regulation section, (410) 841-5710.



**DHIA Lab.**

(Continued from Page A1)

samples per month.

Samples are picked up from supervisors on 133-mile afternoon runs around the county five days per week. The lab also runs five days per week so that results can be available on a regular basis the next day after the sample is taken from the farm.

The turn-around time from Manheim to Raleigh back to Manheim on strategic information needed to make immediate management decisions on the farm is less than two hours. This information printed in Manheim is then sent out the same day so that it is in the hands of dairy farmers within two days after the sample was taken by the supervisor at the farm. The regular monthly reports are printed in Raleigh, and these reports are sent to members from the DRPC.

Many herds in Lancaster DHIA are small, even as small as from 12 to 40 cows. Because of this unique situation the local program has been developed with these small herds in mind. At the same time the larger herds have maintained association because of special programs that cater to herds with on-farm computers.

The lab began operation Oct. 1, and one week later was certified. Problems have been minimal.

For anyone who has an interest in visiting the new lab, a special open house has been planned for Jan. 16-17, 1995. The lab is located two and one-half miles northwest of Manheim along Old Line Road.

ROLLING ON...IN THE 90'S



MEETS THE CHALLENGE

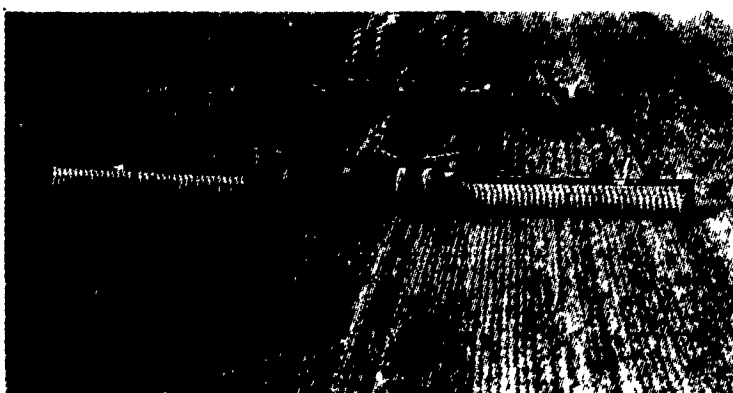
**X-FOLD PULVERIZERS**

crush clods and firm the soil for better contact between seeds and soil.

Brillion has manufactured Pulverizers since 1985 and dominates the market today. Part of that success is because the roller wheels are made in Brillion's own modern foundry. That gives Brillion a big advantage in quality and price.

Available 19' to 46'

There's lots more reasons to buy Brillion...stop in and we'll talk.



**Now Available With 20" Ductile Iron Wheels And 5 Year Limited Warranty**

For More Information Contact Your Brillion Dealer

**PENNSYLVANIA**

- |   |  |  |
|---|--|--|
| ADAMSTOWN<br>Adamstown Equip. Inc.          | LANCASTER<br>Landis Brothers, Inc.       | WATSONTOWN<br>Deerfield AG & Turf Center, Inc. |
| ALLENTOWN<br>Lehigh Ag Equipment            | LEBANON<br>Umberger's Of Fontana         | WEST GROVE<br>S.G. Lewis & Son, Inc.           |
| BECHTELSTVILLE<br>Miller Equip. Co.         | LOYSVILLE<br>Gutshall's, Inc.            | <b>MARYLAND</b>                                |
| BERWICK<br>C.H. Rinehimer & Sons            | LYNNPORT<br>Kermit K. Kistler, Inc.      | FREDERICK<br>Ceresville Ford New Holland       |
| CARLISLE<br>Gutshall's, Inc.                | NEEDMORE<br>Clugston Farm Equipment      | <b>NEW JERSEY</b>                              |
| DOVER<br>George N. Gross, Inc.              | NEW HOLLAND<br>A.B.C. Groff, Inc.        | BRIDGETON<br>Leslie Fogg                       |
| EASTON<br>George V. Seiple                  | OAKLAND MILLS<br>Peoples Sales & Service | ELMER<br>Pole Tavern Equip. Sales Corp         |
| ELIZABETHTOWN<br>Messick Farm Equipment Co. | OLEY<br>Pikeville Equipment, Inc.        | COLUMBUS<br>Reed Brothers Equipment            |
| INTERCOURSE<br>C.B. Hooper & Son            | QUARRYVILLE<br>Grumell Farm Service      | FAIRFIELD<br>Caldwell Tractor & Equipment      |
| GREENCASTLE<br>Meyers Implement             | TAMAQUA<br>Charles Snyder, Inc.          |  |