

27 PETS

AKC Collie Stud Service
Nice Markings,
from good stock
717/284-5146

QUALITY DOG KENNELS



AND ACCESSORIES

- Galvanized Tubing
- Galvanized Wire
- 33" Opening
- Free Standing
- Optional Plastic Floor
- Insulated Dog Boxes
- Kennel Awnings

(717) 355-7100

Quality Fencing & Supply

147A Amlstown Rd.
New Holland, PA

30 COMPUTERS

Computer Sales & Service. Guaranteed repairs and upgrades. Specialized tutoring available.
JOHN LINDINGER
717-862-1015.

32 MISCELLANEOUS

(10) 61 1/2 x36, (10) 72x36 triple track storm windows, (1) 71x32. RR1, Box-213, Fredericksburg, PA 17026.

10'x69" Fleetwood Mobile Home, FREE, must be moved. 717/664-2769 Lancaster Co.

Airco automatic flame cutter, \$800. (908)591-2726.

American Floor Sweeper, electric, self-propelled, 48"W, model 2000B, \$1500. 717/354-3105.

BAHAMA CRUISE! 5 days/4 nights, Underbooked! Must Sell! \$279/Couple. Limited Tickets. (407) 767-0208 ext 5886, Mon.-Sat., 9am-10pm

Bakery Cake Decorating Supplies, Some Equipment (610)273-2413 Evenings.

Bally walk-in cooler, complete, 4x7, 7' tall, \$1000 OBO. 610-754-6298.

Danhauser hydraulic post hole drill, 16" bit, \$2200. 717-649-5488.

Desks, Chairs, Files, Computer Furniture, Panels, Drafting Tables, Bookcases, Storage Cabinets, Floor Pads, Sofas, Conference Tables, Lockers. New Used Factory, Seconds. Direct Office Furniture Outlet, 218 South Second, Harrisburg, (717)236-7200 Open Mon Friday 8 to 4:30.

Detroit Engine, 271, \$1500 717/354-3105.

Discounted Office Supplies, 45% Off Listed Prices, Reliable Industries, 21 Prestige Lane, Lancaster (Please No Phone Calls.)

Farmers Friend #3, A. Bush & Sons, Elizabethtown, PA, (717)677-4873.

Farm Toys-Collector Series, Show Tractors, Pedal Tractors, Trucks-for sale at all times. Visit our large display during business hours. Wengers Farm Machinery, Inc., 251 S. Race St., Myerstown, PA 717/866-2130.

Fashion Lingerie, Regular, Plus Sizes. "FREE" mini catalog. RJG-LF Box 204, New Ringgold, PA 17960.

GENERATOR 150 KVA 230V or 208/120V 3 phase, Hercules diesel, ASCO transfer switch, \$7500; large amount of used electrical equipment: fused disconnect switches, circuit breakers, bus duct and plugs, conduit, fittings, transformers, etc. 908/876-3028, 908/850-6684 for details.

Hershey, PA, plate and coin collection. Leave message, calls will be returned. Lancaster County. (717)653-8045.

Hoist, air, 5-ton, new, \$2200. 717/354-3105.

Iron Worker, Kingsland, model J14, 3x3x3/4 angle punch, cope-round-square mechanical, \$2500. 717/354-3105.

Losch Stokers for Sale, Whole or Parts #600 #1400 Call for info. (717)367-7403.

Meat Grinders, Band Saws, Slicers, Tenderizers. Splitting saws \$289. Gerry, Doyleburg, PA., on RT 75, 200 yards North of RT 274. Sat-Sun, 10AM-4PM. 717-349-7654 or evenings 215-549-7584.

Milling Machine, Cincinnati #3, vertical and horizontal, good condition, \$3800. 717/354-3105.

NOTICE: folding tables and chairs, desks, files, etc. Discount prices. Nolt's Office Furniture, Ephrata, PA (717)859-1617.

Signode Banding Machine, auto. 1/2" steel banding, \$2500. 717/354-3105.

Tig Welder, 300A, Lincoln Idealarc, AC & DC, \$2250. 717/354-3105.

Turret Lathe, W/S, 20" swing, w/motor, complete, \$1250. 717/354-3105.

Unipunch and Stripit, 1 1/2 Wx8"D \$95, 2 1/2 Wx8"D \$200, 2 1/2 Wx8"D \$250, all like new. 717/354-3105.

WANTED: Original floor, grainery boards, 2" flooring, barn beams, tobacco sheds, siding. (717)229-2806. mobile 717/880-4549.

WANTED: Used tools and machinery Buy, Sell, Trade, Consign or Finder. B.J. TOOL & SUPPLY, RT 422W, Myerstown, PA. 1-800-772-9845.

SUPERMARKET EQUIPMENT FOR SALE

Refrigerated display cases
Slicers
Tables
Saw
Grinder
Patty Machine
Cash Registers
Other Misc. equipment
(717) 665-7500

32a ANTIQUES

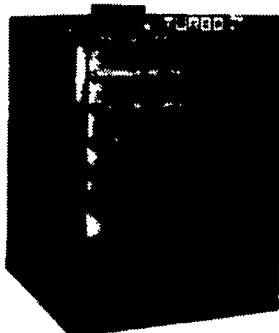
Frick Steam Engine, 9x10, Serial #23184, \$15,000; sawmill: shingle mill, planer, motor, \$2000. 302/875-3426.

Hardy outdoor wood furnace, 5 years old, 120,000 BTU, new domestic coil, good condition. 717/547-6348.

WANTED: Antique reaper or binder machine in good condition. 717-569-7231.

32 MISCELLANEOUS

Heat With Waste Oil Turbo Z Series Free Air Applications



90,000 - 260,000 BTU Units
10 years combustion warranty.
A safe way to dispose of your waste oil.
Over 13 years experience.
Electronic air, Fuel control modules give dependable performance.
Prices starting at \$2,195.00

Power Systems Electric, Inc.
(717) 933-5617

LIVE GAME FISH Fingerings and Adults, Large and Small Mouth Bass, Spotted and Rock Bass, Bream Crappies, Trout, Channel Cats, Bullheads, Walleyes, Perch, Minnows, Northern, Pickerel, Muskies, Red Gills, Mullet, Carp, Eels, Turtles, Frogs, Israeli Carp. Also Aquatic Plants and Water Lilies. COLORFUL CATALOG \$2.00
Truck, Air and Parcel Post Delivery
ZETTS FISH HATCHERIES
DRIFTING, PENNA. 16834
Phone: 814-345-5357

FINALLY! THE BLANKET CHEST HINGE EVERYONE'S BEEN WAITING FOR...



Hinge Features
Spring Loaded Over Center Stay Open
Soft Close Beyond Center
\$8.95/set (1 set per chest)
in PA add 6% sales tax
Add \$3.00 for S & H for less than 5 sets
5 or more sets, prepaid
Call for Quantity Discounts.
Dealer Inquiries Invited.

Also Available: Drop Leaf Hinges, Square Drive Wood Screws, Solid Wood Glued-Up Blanks, Chair Seats, Table Tops, Millwork, etc.
Zimmerman Wood Craft Company
227 Wood Corner Road - Lititz, PA 17543
Phone 717/733-6698 - 800/495-5823

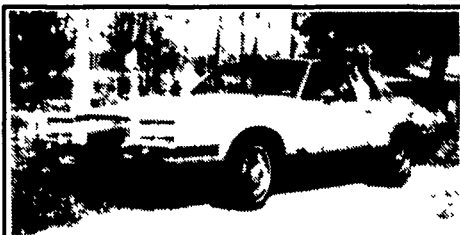
34 AUTOS

86 Ford Escort, auto., excellent condition, \$3000. 717/862-3290.

CHEVY'S, FORD'S, etc. Cars and trucks. Over 300 vehicles. Every Monday 6:30PM. PUBLIC AND DEALERS. YORK SPRINGS PUBLIC AUTO AUCTION, RT 15, York Springs, PA 1-800-222-2038.



'92 Ford Tempo GL V6, 4 door, red, 11,000 miles, like new, R title, Loaded
First \$6,995 Takes
Burkholder's Auto
Danville, PA.
717-437-3848



1984 Pontiac, Grand Prix Brougham, Diesel, Auto, PS, PB, P.Windows, P.Seats, Tilt, Cruise, Air, AM/FM Stereo, 49,000 Org. Miles, Exceptionally Nice Inside and Out
\$4,250
COUNTRYSIDE AUTO SALES
Manheim, PA
Office (717) 664-2170
Home (717) 865-3488

35 TRUCKS & TRAILERS

12 ton, 3 axle Eager Beaver, 18' bed, beaver tail and ramps. \$2800. 717-774-5936.

1956 Dodge power wagon, Army style, 4 wheel drive, good condition, runs great. (610)932-2316.

1962 Mack B81 series, single axle, double frame, 11x24 tires, 673 w/turbo, 20 speed trans, only 38 made. \$7500. 609-894-2849.

1968 F-600 Ford, 21,000 GVW, 90K original miles, new tires, PTO pump, \$2500 OBO. 717-397-4739; 717-284-3793.

1968 Mack Tractor, Wetline, 237 Motor, 5 Spd., Tandem Rears, \$3700; 22' Aluminum Dump Trailer, \$1500; Drop Deck Trailer for Equipment, \$1500; 14' Steel Dump Body, \$1400; 1974 International Transtar Tractor, 350 Cummins, 13 Spd., 44,000 Lb. Rears, Hendrickson Suspension, Wetline, \$4800; 3 Snow Plovers, All Powered Angle, 6 1/2' - 8' Sizes, \$500 Each, Ploved Only. All Are Best Offered. (610)588-9543.

1969 Chevrolet C-50, 292, 4-speed, 12' grain body w/ fitted tarp, 85% rubber, Imron paint, very sharp, asking \$6000. 908-852-4699.

1971 Ford L-900, tilt cab, 534 gas, 5-speed/2-speed rear, 16' beverage body, very low mileage, (set up to haul greenhouse products), \$4000. 609/259-2431.

1959 B Model Mack, 75% restored, diesel, \$3500. 609/965-7468.

1961 Chevy Spartan tiltbed 26,000 GVW, \$3200; AC farm tractor w/saw table, \$1600; electric golf cart, \$75; Old Farmall tractor for parts \$200. 717-354-0887 after 6PM.

1973 International 1700 series, 18' van, fiberglass cab, pull out ramp and trailer hitch, \$1700 OBO. 410-969-3620; 410-969-7518.

1973 Mack DM tri-axle, long wheelbase, 6 speed trans, 237, 44 rears; 1980 Mack MR, 237, 5 speed, 44 rears, long wheelbase; 1972 Mack DM tri-axle dump truck, 237, 6 speed, 44 rears; 1975 International roolback w/cab, diesel. Many different parts for Mack trucks. 215-286-5172; 717-354-8946.

1990 Car-Mate, covered 20' snowmobile trailer, good condition, \$3600. 717-292-4485.

1990 Dodge Cummins LE250, 4x2, 110K, very good condition, \$7800. 814-422-8849.

'93 Ford XLT F250, 4x4, super cab, 351 auto, PS, PB, PW, PDL, cruise, tilt, air, 17,000 miles w/balance of factory warranty, blue & silver, like new, \$23,500. 717-733-2873

'94 Dodge 3500 1 ton, 9' stake bed, Cummins turbo diesel, 5 spd, PS, PB, AM-FM, 11,000 GVW, 14,000 miles. Will sell with or without bed w/bal. of factory warranty, red, excellent condition, \$21,500. 717-733-2873

1974 Ford L750, 1160 CAT diesel, 13 speed O.D., air seat, good condition, \$5000 OBO. 610-273-9635.

1974 GMC 5Yd. Dump, Single Axle, 5+2 Speed, Central Hydraulic System for Plow and Spreader; 1970 International 2010 Truck Tractor, Single Axle, 5+2 Speed. (215)699-3928.

1975 Ford F250 Explorer, 360, auto, Air, good for farm or restoration, \$400 OBO. 610-889-9757.

1977 GMC 6500 series, 5+2, 366 gas, good condition, 14' flat, \$2000. 410-836-1795.

1980 Ford F-350, dual wheels, Galion dump box, 400C10 V8, 100,000-miles, fair condition, some rust, \$2500 OBO. 717/564-2900 days.

1980 Peterbilt, double bunk, cabover, 400 CAT, 14613 Fuller transmission, 370 Eaton rears. 717-859-6610.

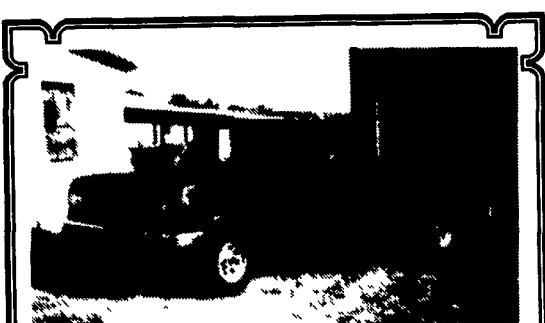
1983 Ford 15' Cube van, runs good, \$2500. 717-648-4972 5-8PM.

'75 International grain and silage dump, 5+2 trans, air brakes, Maryland inspected, \$7500. 301-694-8931.

79 Mack RD triaxle dump, 237 engine, 6-spd., 18,000 front, 44,000 rear, new fuel pump, new complete rear suspension, 11R24.5 tires 70%, engine brake, AC, good condition, \$23,500 OBO. 717/529-2330.

8,000 gal. aluminum tank trailer w/6 compartments, inspected, good condition, \$3500. 717-534-1253.

MILK AMERICA'S HEALTH KICK



91 FORD F150
V8, Auto., OD, PS, PB, Ex. Cab, Electric Windows, 25,000 Miles, Nice
\$10,500 OBO
717/529-2512

Anthony Landis AUTO BODY & SALES
1701 B Division Hwy.
New Holland, PA • 717 355 0644

Specializing in Rebuilt Collision Damage Vehicles

 '91 Ford F-250 XLT Lariat 7.3L Diesel, AT, PS, PB, AC, Tilt, Cruise, PW, PDL, PA, Salvage \$8,500	 '90 Plymouth Acclaim V-6, AT, AC, 47,000 Mi., Needs Right Fender & Door \$2,900	 '90 Dodge Shadow 2 Dr., 2.5, AT, PS, PB, AC, Needs Front, Repair On Right Side, Air Bag Out, 50,000 Miles \$1,375
 '94 Ford F-150 XL, 300, 5 Spd., 4x4, 5,500 Mi. \$9,300	 '94 Ford Ranger XLT Ext. Cab, 2.3L, 5 Spd., AC, 11,000 Mi. \$5,800	 '89 Ford Ranger 4x4 Longbox, V-6, AT, PS, PB, Cloth Seats, Needs Front, 84,000 Mi \$4,200.