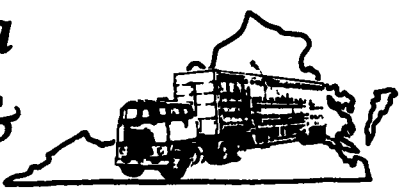


Virginia Cattle & Hogs



Virginia Weekly
RICHMOND VA
NOVEMBER 17, 1994

RESENDING.
WEEKLY REVIEW IN VIRGINIA REVIEW OF VIRGINIA DIRECT HOGS FOR THE PERIOD NOVEMBER 9-15, 1994. RECEIPTS FOR HOT CARCASS BASIS TOTALED 1783 HEAD. RECEIPTS FOR LIVE BASIS PLANT DELIVERY (WITHIN A 30 MILE RADIUS) TOTALED 440 HEAD. RECEIPTS FOR LIVE BASIS COUNTRY BUYING STATIONS TOTALED 782 HEAD. THE VIRGINIA DIRECT HOG MARKET - TRENDS COMPARED TO LAST TUESDAY BARROWS AND GILTS: HOT CARCASS BASIS 163-191 LB. CARCASS TREND: 99 CENT LOWER PRICE: \$37.75 48% LEAN YIELD <27mm(1.15 IN. TENTH RIB) BACKFAT. LIVE BASIS LOCAL PLANT DELIVERED (WITHIN 30 MILE RADIUS) US 2-3 220-250 LBS. TREND: \$1.00 LOWER PRICE: FEW 27.00-29.00 LIVE BASIS VIRGINIA COUNTRY POINTS U.S. 1-3 220-250 LBS 23.00-24.00

SLAUGHTER STEERS AND HEIFERS 0%; SLAUGHTER COWS 9% SLAUGHTER BULLS 2%, SLAUGHTER CALVES AND VEALERS 0%; FEEDER CATTLE UNDER 600 LBS 51%, OVER 600 LBS 38%

PRICE RANGES FOR VIRGINIA WEEKLY AUCTIONS

SLAUGHTER COWS TOTAL HEAD COUNT 763 HEAD UTILITY & COMMERCIAL COWS 2-4 31.00-42.50 CUTTER & BONING UTILITY 1-3 33.00-43.50 FEW 29.75 CANNER & LOW CUTTER 1-2 24.50-36.75

SLAUGHTER BULLS: HEAD COUNT 135 HEAD BULLS - 1-2 900-1300 LB 40.00-52.00 FEW 37.50 1-2 1300-1600 LB 40.00-54.75 FEW 37.50 1-2 1600 LB & OVER 41.75-50.00 FEW 38.75

SLAUGHTER LAMBS TOTAL HEAD

COUNT 309 HEAD WOOLED CHOICE FEW PRIME 1-2 FEW 3 107-127 LBS 64.00-67.50 GOOD & FEW CHOICE 1-2 87-92 LB. 67.00-68.00 FEW 61.00 FEEDER LAMBS MEDIUM & LARGE 1-2 85-100 LB. 67.00-72.50 MEDIUM & LARGE 1-2 70-85 LB. 75.00-80.50 MEDIUM & LARGE 1-2 60-70 LB. 72.00-81.00 MEDIUM & LARGE 1-2 50-60 LB. 70.00-80.00 FEW 67.00

FEEDER CATTLE TOTAL HEAD COUNT FOR ALL WEIGHTS 7215 HEAD STEERS: MEDIUM 1 HEIFERS: MEDIUM 1 200-300 ---- 200-300 72.00-75.00 300-400 80.00-96.00 300-400 63.00-75.00 400-500 72.00-86.00 400-500 58.00-74.00 500-600 69.00-80.00 500-600 53.00-69.50 600-700 63.50-73.50 600-700 51.00-67.00 FEW 69.50 700-800 60.00-71.50 700-800 58.50-62.00 800-900 58.50-71.00 800-900 54.75-61.50 900-1000 57.50-69.75 1000-1100 61.00-67.00

SPECIAL STATE GRADED SLAUGHTER CATTLE SALE HELD AT FREDERICKSBURG, VIRGINIA ON 10-NOV-94. 90 HEAD SOLD

STEERS CHOICE 2-3, 1000-1150 LB. 62.50 - 68.75 CHOICE 2-3, 1150-1300 LB. 68.50 - 68.75 CHOICE 2-3, 1300-1450 LB. 65.00 SELECT 2-3, 1000-1200 LB. 52.75 - 62.50 SELECT 2-3, 1200 LBS. & OVER 59.50 - 65.00

HEIFERS CHOICE 2-3, 950 LBS. & UNDER 54.50 - 59.00 CHOICE 2-3, 950-1100 LB. 56.00 - 66.30 CHOICE 2-3, 1100-1300 LB. 62.25 - 67.40 CHOICE 2-3, 1300 LBS. & OVER 63.00 - 65.25

SPECIAL STATE GRADED SLAUGHTER CATTLE SALE HELD AT MADISON, VIRGINIA ON 12-NOV-94 151 HEAD SOLD

STEERS CHOICE 2-3, 1000-1150 LB. 60.00 - 66.25 CHOICE 2-3, 1150-1300 LB. 63.00 - 67.75 CHOICE 2-3, 1300-1450 LB. 65.00 - 66.75 SELECT 2-3, 1000-1200 LB. 61.00 - 65.50 SELECT 2-3, 1200 LBS. & OVER 54.00 - 62.00

HEIFERS CHOICE 2-3, 950 LBS. & UNDER 54.50 CHOICE 2-3, 950-1100 LB. 55.00 - 61.75 CHOICE 2-3, 1100-1300 LB. 52.00 - 67.00 CHOICE 2-3, 1300 LBS. & OVER 57.00 - 64.25 SELECT 2-3, 850-1100 LB. 52.00 - 56.00 SELECT 2-3, 1100-1300 LB. 51.50

WEEKLY SUMMARY OF STATE GRADED FEEDER CATTLE SALES FOR THE WEEK OF NOVEMBER 8-14, 1994. TOTAL 4,713 HEAD SOLD. STATE GRADED. SALES WERE HELD AT THE FOLLOWING AREAS:

NOV. 8 STAUNTON UNION 365 HEAD NOV. 8 MARSHALL 1732 HEAD NOV. 8 WYTHEVILLE 344 HEAD NOV. 9 SOUTHSIDE (BLACKSTONE) 93 HEAD NOV. 10 CULPEPER 718 HEAD NOV. 10 FRONT ROYAL 210 HEAD NOV. 10 HARRISONBURG (ROCKINGHAM) 811 HEAD NOV. 14 LYNCHBURG 440 HEAD

STEERS MEDIUM 1 LARGE 1 MED-&LARGE 1 SMALL 1 MED&LARGE 2 300-400 71.50-83.00 - 75.00-98.00 62.50-72.50 69.50-97.00 400-500 81.00-85.00 80.25 69.50-90.00 65.25-76.50 66.50-86.75 500-600 76.50-79.00 63.75-76.00 66.50-80.00 51.00-73.00 62.00-79.00 600-700 68.25-70.00 69.50-71.00 60.00-76.50 61.00-68.75 62.00-70.50 700-800 71.25-72.00 71.25-72.25 61.50-71.00 64.25-69.00 65.00-67.50 800-900 71.50 65.00-69.25 65.25-70.25 57.00-63.00 64.00-68.50 900-1000 68.25 67.00-67.75 66.00-68.50 - 50.25

HEIFERS MEDIUM 1 LARGE 1 MED-&LARGE 1 SMALL 1 MED&LARGE 2 300-400 66.00 - 64.00-79.00 50.00-60.00 61.00-86.00 400-500 70.50 - 63.00-75.00 51.25-60.00 50.50-75.00 500-600 50.00-62.75 57.00 58.00-68.50 51.00-57.00 57.00-65.50 600-700 64.00 66.00 58.00-68.50 48.50-55.50 52.50-66.75 700-800 - - 60.00-68.25 - 58.00-59.00 800-900 - - 55.00 - -

BULLS MED&LARGE 1 MED-&LARGE 2 400-500 82.00-86.50 80.00-85.00 500-600 72.00-76.00 68.00-75.00

A SERVICE OF VIRGINIA DEPARTMENT OF AGRICULTURE & CONSUMER SERVICES MARKET NEWS OFFICE IN COOPERATION WITH USDA. 804-786-3947.

North Virginia

RICHMOND VA

NOVEMBER 16, 1994

MARSHALL, VIRGINIA ON 15-NOV-94 PRICES BASED ON IN WEIGHTS.

SLAUGHTER CATTLE 298 HEAD
SLAUGHTER COWS 286 HEAD
COWS BREAKING UTILITY & COMMERCIAL 2-4 34.00 - 38.25 HIGH DRESSING 39.00 - 44.50 CUTTER & BONING UTILITY 1-3 32.00 - 38.00 HIGH DRESSING 38.00 - 42.50 CANNER AND LOW CUTTER 1-2 31.00 - 37.00

SLAUGHTER BULLS 12 HEAD
BULLS Y.G. 1-2, 900-1300 LB. 43.00 - 44.75 Y.G. 1-2, 1600 LBS. & OVER 41.25 - 46.75 HIGH YIELDING 3 AT 50.00 - 52.25

FEEDER CATTLE 587 HEAD
STEERS 240 HEAD MEDIUM 1 LARGE 1 SMALL 1 MED & LARGE 2 300-400 75.00 - 94.00 - 70.00 - 71.00 - 400-500 74.00 - 86.00 78.00 65.00 - 66.00 60.00 500-600 66.00 - 77.00 - 60.00 - 64.50 - 600-700 63.00 - 69.50 - 57.00 - 64.00 - 700-800 - - 67.00 57.75 - 60.50 800-900 68.50 - 68.75 63.75 - -

HOLSTEIN 21 HEAD STEER MED & LARGE 2 300-500 53.00 - 57.50 500-700 56.25 - 59.00

HEIFERS 181 HEAD MEDIUM 1 LARGE 1 SMALL 1 MED & LARGE 2 300-400 57.50 - 68.00 - 58.50 62.00 400-500 57.50 - 68.00 - 55.50 - 57.50 46.50 500-600 56.50 - 63.00 - 52.50 50.50 600-700 56.00 - 59.00 - - 700-800 - 65.00 - -

BULLS 166 HEAD MEDIUM 1 LARGE 1 SMALL 1 200-300 81.00 - - 300-400 74.00 - 80.00 - 62.00 - 63.00 400-500 63.50 - 70.00 - 58.00 - 61.00 500-600 58.00 - 62.00 60.00 57.00 - 57.50 600-700 57.00 54.50 - 57.75 - 700-900 54.25 54.25 - 58.50 - BABY CALVES RETURNED TO FARMS 14 HEAD NEWBORN TO 4 WEEKS OLD \$50.00-77.50 PER HEAD. OVER 100 LBS \$60.00-92.50 PER CWT. JR

WYTHEVILLE, VIRGINIA ON 15-NOV-94 PRICES BASED ON IN WEIGHTS.

SLAUGHTER CATTLE 101 HEAD
SLAUGHTER COWS 90 HEAD
COWS BREAKING UTILITY & COMMERCIAL 2-4 32.00 - 34.00 CUTTER & BONING UTILITY 1-3 28.00 - 35.00 HIGH DRESSING 36.00 - 40.00 CANNER AND LOW CUTTER 1-2 23.00 - 27.00

SLAUGHTER BULLS 11 HEAD BULLS Y.G. 1-2, 900-1300 LB. 40.00 - 44.00 Y.G. 1-2, 1300-1600 LB. 40.00 - 45.00 Y.G. 1-2, 1600 LBS. & OVER 44.00 - 48.00

LAMBS TOTAL RECEIPTS 125 HEAD SLAUGHTER LAMBS 99 HEAD WOOLED CHOICE FEW PRIME 1-2 FEW 3 94 LB. 64.00 FEEDER LAMBS 26 HEAD MEDIUM & LARGE FRAME 1-2,

70-85 LB. 68.50

FEEDER CATTLE 848 HEAD
STEERS 340 HEAD MEDIUM 1 LARGE 1 SMALL 1 MED & LARGE 2 300-400 83.00 - 91.00 90.00 - 98.00 75.00 - 83.00 87.00 - 95.00 400-500 75.00 - 83.00 83.00 - 91.00 67.00 - 75.00 78.00 - 85.00 500-600 68.00 - 77.00 75.00 - 80.00 63.00 - 68.00 68.00 - 75.00 600-700 64.00 - 68.00 65.00 - 72.00 58.00 - 64.00 66.00 - 68.00 700-800 62.00 - 68.00 - 55.00 - 62.00 - 800-900 62.00 - 66.00 - - -

HOLSTEIN 65 HEAD STEER MED & LARGE 2 300-500 56.00 - 66.00 500-700 48.00 - 57.00 700-900 46.00 - 54.00

HEIFERS 325 HEAD MEDIUM 1 LARGE 1 SMALL 1 MED & LARGE 2 200-300 63.00 - 70.00 67.00 - 73.00 58.00 - 65.00 65.00 - 72.00 400-500 57.00 - 62.00 60.00 - 66.00 52.00 - 58.00 59.00 - 63.00 500-600 54.00 - 60.00 60.00 - 65.00 48.00 - 54.00 56.00 - 60.00 600-700 58.00 - 64.00 62.00 - 67.00 50.00 - 56.00 60.00 - 64.00 700-800 60.00 - 65.00 - - - 800-900 60.00 - 65.00 - - -

BULLS 118 HEAD MEDIUM 1 LARGE 1 SMALL 1 MED & LARGE 2 300-400 83.00 - 91.00 90.00 - 98.00 76.00 - 83.00 85.00 - 92.00 400-500 75.00 - 81.00 80.00 - 86.00 69.00 - 75.00 78.00 - 83.00 500-600 65.00 - 72.00 72.00 - 80.00 60.00 - 67.00 - 600-700 57.00 - 64.00 - - - 700-900 53.00 - 59.00 - - - BABY CALVES RETURNED TO FARMS 8 HEAD NEWBORN TO 4 WEEKS OLD \$70.00-100.00 PER HEAD.

***** THE FOLLOWING ARE STATE GRADED PRICES *****

STATE GRADED FEEDER CATTLE 367 HEAD SOLD AT WYTHEVILLE, VIRGINIA ON NOVEMBER 15, 1994

STEERS 150 HEAD MED & LARGE 1 MED & LARGE 2 400-500 88.00 - 90.50 84.00 - 90.00 500-600 68.00 - 75.50 69.00 - 76.50 600-700 67.00 - 70.50 69.00 - 70.00

HEIFERS 185 HEAD MED & LARGE 1 MED & LARGE 2 300-400 69.00 - 72.00 70.00 - 74.00 400-500 63.00 - 67.50 57.00 - 68.00 500-600 61.00 - 64.00 60.00 - 65.00 600-700 58.00 - 64.00 59.00 - 63.00

BULLS 32 HEAD MED & LARGE 1 MED & LARGE 2 400-500 75.00 - 85.00 81.00 - 86.00 500-600 66.00 - 71.00 - 600-700 64.00 - GW

A SERVICE OF VIRGINIA DEPARTMENT OF AGRICULTURE & CONSUMER SERVICES MARKET NEWS OFFICE IN COOPERATION WITH USDA. 804-786-3947.



LOOP STALLS

All Loop Stalls Are Coated With Baked On Top Grade Polyester TGIC Powder Coating After Fabrication

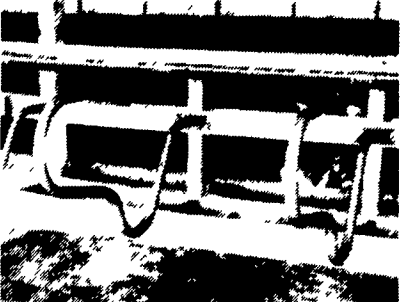
- Super Tough Finish
- Protection From Rust & Corrosion
- Superior Electrical Insulation

- Chip Resistant
- Resists Acid & Chemicals
- Smoother Finish Stays Cleaner

FREEDOM STALLS

FEATURING

- Greater cow comfort in shorter stall beds
- Provides additional side head room in the lounge process



CONVENTIONAL STALLS

Loop Stalls Are Constructed Of:

- 2 3/8" Outside Diameter High Yield Steel Tubing With A 12 Gal. (.108) Wall
- Spray Arc Transfer Method Used On Welds

LAPP'S BARN EQUIPMENT

5935 OLD PHILADELPHIA PIKE, GAP, PA 17527

PHONE: 717-442-8134

WE SERVICE WHAT WE SELL

— Radio Dispatched Trucks —



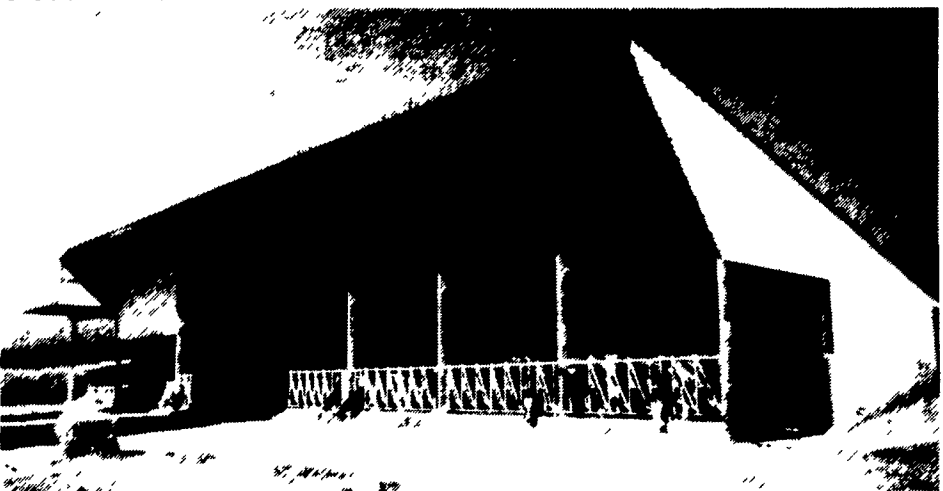
MILK. IT DOES A BODY GOOD.™

Thanks and Congratulations

to

CARL McMILLEN & SON

ON THEIR OPEN-SIDE COUNTER SLOPE HEIFER FACILITY



FEATURES

- Manure Storage With Waffle Slats
- Show-Ease Auto-Release Headlocks
- Heavy Duty Curtain System



AGRI-INC. The Construction Professionals

151 E. Farmersville Road, Ephrata, PA 17522 • (717) 354-4271

Serving The Agriculture Industry For Over 25 Years

Let Our Experience Work For You For All Your Farm Building Needs, Large Or Small