

PUBLIC AUCTION

ANTIQUES, H.H. GOODS,
COLLECTIBLES, OLD BOOKS,
FURNITURE AND MORE.

SATURDAY, NOVEMBER 26, 1994
(9 AM)

Location: 303 West Jackson Street, York, PA. From Rt. 30 take George Street through the city of York to West Jackson Street. Turn right on West Jackson Street. Go several blocks to New Berry Street property is on the corner of New Berry St. and Jackson Street. Look for signs.

HIGHLIGHTS

Old Post Cards (Locals, Greetings and More), Many Early Books Dating from 1700's to 1900's (Story Books, Biblical and More), Old Wooden Car Trunk, Old Dollies and Linens, Old Baskets, Blanket Chest (Large and Small), Bush & Lane Chicago Victrola, Old Records, Set of Old Cane Seated Chairs, Old Desks, Large Two Door Book Case, Old Sheet Music, Seth Thomas Shelf Clock, Old Floor Lamps. Early Victorian Lamp Stand, Early Rocker, Early Can Seated and Back Rocker, Victorian Style Rocker, Dining Table w/3 Extensions, Depression Glass, Ranger Joe Mug. Hand Blown Vase, Nippon, Glass Basket, Roy Rogers and Lone Ranger Comic Books, Some Old Games, Various Old Pictures, Chicago Printing Press w/Box #9 and Many More Items Not Listed.

SELLING FOR: ANNA MITZEL
BEVERLY BOWERS & WALTER MITZEL
POWER OF ATTORNEYS

TERMS OF SALE: Cash or Check



ALL-AMERICAN AUCTION SERVICE
2428 DONEGAL SPRINGS ROAD
MARIETTA, PA 17547
(717) 426-3788
LIC. #RY-11-L

BEEPER #1-800-812-6024 WHEN ASKED ENTER YOUR
PHONE # WITH AREA CODE.

Food Stand



PUBLIC AUCTION

Valuable Real Estate
Consisting Of 131 Acres of
Prime Land
Mon., Nov. 21, 1994
2:00 P.M.

Located Along: Gravel Hill Road,
Palmyra, Pa. North Londonderry/North
Annville Townships, Lebanon County
(Palmyra/Hershey Area).

- 131 Acres of Prime Land, approx. 100 acres tillable, approx. 31 acres consisting of wooded and streams

- Located Only 4 Miles From Hershey, PA, Only Minutes From Palmyra, PA.

- Road Frontage on Gravel Hill, Eisenhower Road, Valley Glenn Road, Syner Road.

- Swatara Creek And Quittapahilla Creek Bording Various Parcels, Having Plenty Of Irrigation Potential.

- This Land is in a High State of Cultivation, with some Parcels Ranging From A Gentle Rolling Slope To Flat Fertile Riverbed Soil.

This Is An Excellent Opportunity To Acquire Additional Acreage For Many Various Uses.

For Inspection Of Real Estate: Go Directly To Various Parcels. At Your Convenience.

Terms: 10% Down Day of Auction, Balance Due In Full Within 45 Days.

Auction For:
Cesar Verdelli
717-566-2234 - 303-668-0615

Auction Conducted By The
J. Omar Landis Auct. Serv.
Jay M. Witman AU001127-L
Box 501, 1605 Apple St., Ephrata, PA 17522
717-738-7900, 665-5735

Public Auction Register

Closing Date Monday 5:00 P.M.
of each week's publication

SAT. JAN. 7 THRU JAN. 12 - '95 Pa. Farm Show Collector Models, Ertl Banks, Winross Trucks, Tractors, Farm Show Complex, Harrisburg, Pa.

Quarryville app. 4 mi. or from Lancaster take Rt. 272 S. to traffic light at Buck turn East on Rt. 372 to property on right. By Dean H. & June Mylin. Kreider, Kline & Good aucts.

SAT. JAN. 7 - 10AM Real Estate & personal property. 1005 Buck Rd, Quarryville, Pa. Take Rt. 372 W. of

SAT. JAN. 7 - 11AM Modern Farm Machinery, 2 JD tractors, etc. on farm 4 miles S of Mifflinburg, Pa. at White Springs. David E. & Mary Hurst. Fraley Auction Co.

THURS. JAN. 12 - 9AM Farm equip. and livestock. South of Leola, turn off Rt. 23 on Rt. 772 Turn right on Creek Hill Rd. to 2714. Lanc. Co., Pa. Henry Miller, Robert E. & Jeffrey R. Martin, Randall L. Ranck, Auct.

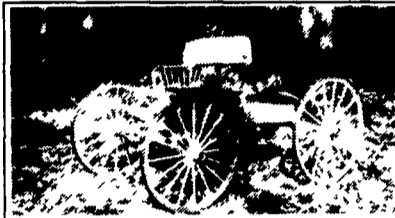
FRI. JAN. 20 - 10 AM Horse Sale, New Holland Sales Stables, Inc., 101 W. Fulton St., New Holland, Pa.

FEBRUARY

FRI. FEB. 3 - 10 AM Horse Sale, New Holland Sales Stables, Inc., 101 W. Fulton St., New Holland.

ALDERFER AUCTION COMPANY

ON SITE ABSOLUTE AUCTION



TUESDAY, NOVEMBER 22, 10 AM

FOR: Mr. & Mrs. William Collier - LOCATION: 121 Wartman Rd. Graterford, PA

Directions: Rt 29, to Bridge St (across from penitentiary entrance), left on Wartman Road to sale site

EQUIPMENT: Allis Chalmers 160 diesel tractor, wide front end, 3 pt. pto, fork loader, Case tractor, vac, tricycle, 3 pt, 3 PT HITCH 5' woods mower, disc harrow, 2 bottom plow, herd spreader, 2 row corn planter, sprayer w/PTO pump, transplanter, Wheel Horse riding mower. CARRIAGES AND SLEIGHS: 2 seat cut under carriage in original unrestored sound condition, pony carriage on rubber, partial restoration; 2 seat sleigh, cutter sleigh by Lull Carriage Co., Kalamazoo, Michigan, unrestored; farm sleigh, English pony cart on rubber. CAR: 1941 Plymouth Deluxe, 4 dr, sedan, unrestored. TOOLS: Craftsman 12" wood lathe, hand and garden tools, lumber COLLECTIBLES: Large collection of stoneware pottery by Rowe and others, Lois Rapp water colors, pewter, armatell, silver plate, castor set, child's chocolate set, china & glassware FURNISHINGS: Whirlpool & Admiral refrigerators, dishwasher, drafting table, wing chair, ladderback rocker, porch swing



PUBLIC AUCTION

Fifty Two Acre Farm

In Providence Township, Lancaster County
Pennsylvania

Tuesday, November 22, 1994
6:30 PM

Located 5 miles South of Willow Street, 7 miles South of Lancaster City. From Route 272 South go through underpass, 1st road right to Rawlinsville Road left, 1st farm.

Established Utility Shed Business - Veal Calf Operation



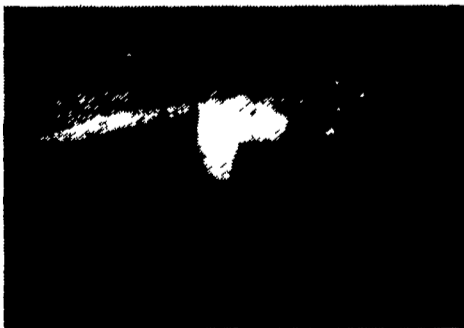
House with 4 Fireplaces



40'x105' Bank Barn



Manufacturing Shed



96 Stall Calf Barn

Fifty two acres - improvements consist of a two and a half story stone and stucco house, 5-6 bedrooms, large eat-in kitchen, dining room, living room, two and a half baths, four fireplaces; 40'x105' bank barn, block milk room, 2 silos, 16'x60' concrete, 20'x35' Harvestore; ninety-six veal finishing barn, completely automated, shed currently being used for utility shed manufacturing; place has 2 water springs and well.

TERMS: 10% down sale day, final settlement January 1995.

Shown by appointment. Call owners 716-382-9822 or Auctioneer 610-593-2828.

Auctioneer's Note - House remodeled last 20 years. This is an excellent location with walk-in business opportunity or semi-retirement.

Auctioneer
Steve
Steve Jr. **Petersheim**
610-593-AUCT
AU 001349L

Sale By:

Leon & Ruth Fisher



SPECIAL AUCTION



DELMARVA DEERE DEALERS AUCTION
Tractors, Combines, Tillage Equipment, Lawn & Garden

Saturday, November 26, 1994

9:00 a.m.

LOCATION: Taylor & Messick, Inc.
Walt Messick Road
Harrington, DE 19952
302-398-3729
Ask For Jimmy



TRACTORS: Antique JD 820, JD 830, JD 730 Standard, JD 70 Standard, JD 50, JD R, 2-Styled JD D's, Restored JD 50w/3Pt. Hitch, JD 1010 Crawler w/6 Way Blade, JD 1530, JD 2950 2WD No Cab, 1972 JD 4020, JD 2955 2WD No Cab 118Hrs., JD 4020, 1989-6610 Ford Series 2, JD 7800 2WD w/Cab, IH856, WD45AC, 4250 JD 4 Post Roll Guard, JD 4255 w/Cab 2WD 433 Hrs.

IMPLEMENTS: JD B Drill, JD BA Drill, JD 8300 Drill 21x7 D. Disk, 720 IH Plow 7Btm. Onland Hitch, 20Ft. Case IH No Till Drill w/Unverferth No Till Att., 14Ft. Crawfoot Packer, 12Ft. Pittsburgh Disk, 24 1/2Ft. Brillion Field Cult., Woods 5 Ft. Cutter, 5Ft. Pull-Type Gyramor, 12Ft. Springtooth, 4Row AC Cult., 3Btm. AC Plow, 10Ft. Chisel Plow, 2-Drill Hitch w/2-24x6 - 8300 Grain Drills w/Press Wheels, 2-6 Btm. F145 Plow in Furrow, 71 Flex Planter 10 Row, Hardee Ditch Bank Cutter, 16 Row 7000 Planter Front Fold Liquid Fert. Loaded, 2-AC No Till Planters, Brillion 18Ft. Springtooth, 7Btm. JD 2700 Plow On land Hitch, 5 Shank DMI Ripper, 8 Row JD Folding 30inch Cult., New 7Ft. Blade, New 5Ft. 6 Box Scrape, Wheel Weights, Front End Weights, Case IH 5400 Drill w/Cult-Planter & No Till Attachment, IH 470 Disk, 13' w/Cylinder, JD 12' Cultimulcher, Ferguson PTO Ditcher, Brillion 14' Solid Packer w/Transport, Mohawk 10' Chisel Plow, JD 7 Row Splitter, 18' Field Cultivator, JD 210 Disk, 15' Dual Wheels, IH 560 6Btm. Plow, JD 643 Corn Head, JD 222 Platform, JD 4 Btm. Plow w/Rake, JD 5 Btm. Plow w/Rake, JD Sickle Mower, 30' McKee Field Cultivator, 18.4x38 Duals, 18.4x34 Duals, New 8' Blade, New 6' Blade, Woods Tiller, JD 220 Flex Platform.

LAWN & GARDEN: 6x4 Gator, JD 420 Riding Mower 20HP w/New Motor & 60" Mower, JD 316 Lawn Tractor, JD S82 Riding Mower, Snapper, Club Lo boy 154 w/60" Mower 3Pt. Hitch, Gravely 16-G, Cub Cadet 682, JD 212 Lawn Tractor.

MISC.: Attaching Bundles, Old Parts, New Parts, Many small items to be sold first, so be here early. This is a partial listing. Many items coming in daily.

TERMS: Cash, Certified Check, Cashier's Check or check with current letter of credit from your bank.

All equipment sold "AS IS AND WHERE IS" with no expressed or implied warranties unless announced otherwise by auctioneer day of sale.

TRACTORS TO BE SOLD AT 1:00 P.M. (APPROX.)

This auction is one of the largest of this kind ever held in this area and is being sponsored by Delmarva John Deere Dealers. Don't miss this auction! Make plans to attend today!

Wilson's Auction Sales, Inc.
Dave Wilson, Auctioneer & Sales Manager
(302) 422-3454
Fax (302) 422-0462

*** Lunch Served By Burrsville Ruritan Club ***

For more information contact Jimmy Messick at 302-398-3729 or 302-398-4145.

Subject to prior sale as trade-ins are coming in daily.