

Public Auction Register

Closing Date Monday 5:00 P.M.
of each week's publication

SAT. NOV. 19 - 8:30-2:00
Truck & Farm Toy Show
Ertl Winross Farm Toys,
trucks promo, racing, more.
Alderfer Auction Center
Fairground Rd., Hatfield.

MON NOV 21 - 9AM
Equipment, supplies & misc For the late Bill Rosenberry complete inventory of rest equip and supplies from Interstate 81 exit 3 Greencastle, Pa. take Rt 16 E. 1 mile to lane on right Faye Rosenberry, owner Gossert's Auction Service.

MON NOV. 21 - 10AM
Paul Capra Aucts. Reiniger Bros, Inc., Florists on premises 315 Byberry Rd., Hatboro, Pa. P Capra, auct.

MON NOV. 21 - 11AM
Machine shop. 217 Segur St Horseheads, NY (Elmira Area, signs from Rt 14 N and Ridge Road at Wygant). Mrs. Anne Keeton. Randy Jelliff Auction Service.

MON. NOV. 21 - 12 Noon,
2 Tracts Of Real Estate, Antiques & Household Goods. Located at 409 Lakeview Drive, Elizabeth Township (Speedwell Forge Area), Lanc Co., Pa. Directions: Rt. 501 North Of Lutz, Turn West Onto Brubaker Valley Road, Right Onto Lakeview Drive, 3rd House On Right. Terms By, Catherine W. Young Estate Horst Aucts.

MON. NOV. 21 - 2PM Real estate consisting of 131 acres of prime land Along Gravel Hill Rd., Palmyra, Pa. For Ceasar Verdelli. J. Omar Landis Auction Co.

SAT. NOV. 19 - Farm machinery. Located: From Schaefferstown, Route 501 N to Country House Restaurant turn right onto Elco Road to 2nd cross road, turn left onto Royers Road to first farm on left Jackson Twp., Leb. Co Terms by Reuben O and Minnie H Martin Kline, Kreider & Good, aucts

SAT NOV 19 - Ervin Horst, Along Rt 897, 1 1/2 miles SE of Blue Ball, Antiques, tractors and engines, mechanical tools Nevin Martin & Sons, aucts

AUCTION

Saturday, December 3, 1994
@ 9AM

LOCATION: 183 S of York, Exit 4 W to 2nd light; L 1/2 block; R on Reynolds Mill Rd; 3 mi sale on L

CAR, TRUCKS, TRACTORS, FARM EQUIP
87 Plymouth Caravelle SE, auto; 54 F8 truck tractor; 49 F4 truck w/9' bed; 49 F4 for parts; Ford 2000 tractor-hi/lo w/2 remotes; front mt blade for 2000; 34 Fordson on steel w/pulley-nice; 2 bot plow for Fordson; Cub w/belly mower; JD lawn tractor; Ford 530 baler-like new; 5' Woods belly mower for cub; Ford 501 3pt sickle bar mower; JD 24T baler w/#30 thrower; extra pick-up for 24T; JD 1440 no till corn planter; JD 125 chuck wagon w/1065 gear; NH 479 haybine; IH 720 harvester-wide or narrow w/grass head; JD 237 mt corn picker; IH 350 12' disc; IH 55 3pt 9 tooth hi clear chisel plow; JD 5 bot mt plow; JD 3 bot mt plow; NI 175 40' PTO elevator; MF 15 grinder/mixer; 16' bale wagon; 14' flat wagons; 14' dump wagon; JD hay rake; SQ60 3pt bush Hog; horse trailer; Agri bedding chopper; JD manure 3pt post hole digger-nice; NI 217 manure spreader-as is; pickup trailer; 2 wheel trailer; 3pt lift boom; Brillon 12' culti; top beater for IH 540 spreader-new; Patz barn cleaner unit; Patz gutter cleaner chain w/16" left hand hi paddles; dump wagon hoist; wheels for 24T baler; aceline torch outfit; Surge milkers w/elec pulsators; Bender dumping station; SS washtubs; approx 30 drinking bowls; feed trough; 2 calf hutches; 1200 gal. poly fert tank; 110 gal fiberglass sprayer tank 1/2 ton chain hoist; 25 ton hyd press; chains; misc silo pipe; asst 4-16' gates - some new; barn fans; horse shoes; barbed wire; new 16' oak lumber; piles fence posts; 10"x20" pipe; 48-50 4 sp transmission; **FLATHEAD PARTS**-water pumps, heads, block; misc hand tools; wagon load of sm items.

Not responsible for accidents.
Refreshments provided.

TERMS: Cash or good check

AUCTIONEERS:
Kenneth K. Keeny AU2797L
717-993-3448
Marlette E. Thomas AU3251L

SAT NOV. 19 - 8:30AM
Antiques, household goods, collectables, art & craft supplies, guns, tools and collection of Fostoria Glassware. For the Irvin T. Alloway Estate of Brogue and consignments for the Fawn Grove United Methodist Church Building

Fund and others. Held in the Chanceford Community Center, Brogue, Pa. 7 miles SE of Red Lion to right at Brogue Post Office. From Bel Air take Rt. 165 N. to Rt. 74 & continue to Post Office & left 1/4 mile to hall on left. Bob & Tom Secrist, aucts.

★ CHRISTMAS ★
- ANTIQUE AUCTION -

We will be selling from the former "Ravert Building", located at the corner of 9th and Main Street, Watsonstown, PA.

FRI., NOV. 25, 1994

Beginning At 10:00 A.M. Sharp

ANTIQUES ★ FURNITURE ★ COLLECTIBLES

Jelly Cupboard - McFarland Wood Box (Watsonstown) - Hand Forged Hay Knife - Tin Kerosene Lamp - Kerosene Lamps - Few Local Post Cards - Dovetailed Blanket Chest - Hall Red Poppy Sugar and Creamer - Mahogany Library Table - Bamboo Stand - Camera Shop Dime Bank (Williamsport) - Fancy Victorian Stand - Depression China Set - Clerks Desk - Softwood Dresser - Large Beveled Edge Mirror - Sewing Table - 8 Hole Candle Mold - Various Pieces Pressed Glass- Fiesta Pieces - Various Patterns of Depression Glass - Childs Small Blanket Chest with Legs - Griswold #8 Frying Pan - 2 Eastern Style Tapestries - Cradle - Oak Furniture: Map Display Case - Gentlemans Dresser - Stands - Wash Stand with Butter Print - Dresser - Drop Front Desk - Bow Front Highboy - Mirrors - Library Table - Teachers Desk - Rocker - Ball & Claw Organ Stool - Pupils School Desk - (2) Tables (1 Penna. House Table) - Redware 2 Gal. Crock - Pair Andirons - Various Pocket Knives - Brass Miners Lamp - Wood Clothes Racks - 1902 Erie Steamboat Pass - Full Bed with Acorn Posters - Boss Hand Crank Washing Machine - Various Ruby Glass Pieces - Two Drawer Sewing Stand - Hoosier Flour Storage and Sifter Unit - Pleasant Valley Creamery Embossed Milk Bottle (Milton, PA) - Shamokin Coca-Cola Bottle - Electric Christmas Scene - Metal Lunch Pails: (Lone Ranger, Sea Wolf, Sesame Street, How the West Was Won, etc.) - Modern 6 Piece Cherry Dining Room Suite (Table with 2 Boards, 5 Chairs, 2 Piece Hutch) - Franklin Mint Collectors Monopoly Set - Wood Dry Measure - Ice Cream Scoops -

COLLECTIBLE and MODERN TOOLS ★ BUTCHER EQUIPMENT

Stegley #2 Combination Plane - Wood Block Plane - Wood Spoke Shave - Various Hand Tools - Ryobi 10" Power Mitre Saw - Power Sanders - Cordless Screwdriver - Enterprise 4 & 6 Quart Lard Presses - Enterprise #12 Meat Grinder - Metal Table - Butcher Ladle and Fork -

TOYS ★ GAMES

Hubley: 8" Cast Caterpillar Diesel Tractor - 7" Jr. Farmall "H" Tractor - 5" Cast Wheeled Farm Tractor - 12" #902 Dump Truck (Mighty Metal) - 10" #473 Fire Truck - 6" Kiddee Toy Truck (Metal and Plastic) - Hess Trucks: 1984 Tanker Bank - 1988 Truck/Racer - 1989 Fire Trucks - 1990 Tanker with Box - 1991 Truck/Racer (Mint in Box) - 1993 Patrol Car (Mint with Box) - Hoge Fire Chief Car - Marx Farm Set: (8" Caterpillar Tractor with Driver and Blade, Metal Wagon, Plow, Dump Rake, Disc, Corn Planter, Hay Mower, Wood Drag Sled, Litho Tractor Shed) - Practice Target Range - Heavy Duty Caterpillar Tractor With Driver - Sparkling Gun Army Tank - 8" Orange Wind-up Caterpillar Tractor - Japanese Tin: PanAm Skyway Helicopter - 7" Tin Lizzy (Friction) - 7 1/2" Truck (Doors Mkd. "SSS") - 4 1/2" Dump (Hati) - Structo: Dirt Mover - Car Carrier "Auto Haul" (Trailer only) - Road Grader (Blade Missing) - Tonka: Horse Trailer - Truck Tractor #975 (State Hi-way Dept.) - Pick-up with Sportsman Cap - Car Carrier Trailer - Other Toys: Ohio Art Toy Iron - Cast Aluminum Road Grader- Slik Toy Oliver Tractor - Yellow Silver King Farm Tractor- Gabriel 1975, Dump Truck - Tru Scale MM Farm Tractor - Farmall Red Tractor - (3) Pressed Steel Air Planes - Wolverine Electric Toy Iron - Wyandotte Sturdi Construction Shovel - Doll High Chair - Childs Ironing Board - Childs Wooden Hutch Top - (2) Childs Straight Chairs - Childs RCA Victor Record Player with 60 Records - Toy Chest of Drawers - Cap Guns (Diecast and Cast Iron Old Models) Fisher Price Toys - Childs Sewing Machine - Nylint: Lg. Metal Crane - Trail Blazer - U-Haul Trailer (open top) - 31" Hook & Ladder Fire Truck - Unique Dependable Typewriter - Ertl: IH Farm Tractors WFE & NFE - Transtar Dump Truck - Horse Trailer - Games: Whirling Words (1942) - Cavalcade Racing Classic - Mr. Doodles Dog - plus others.

TRAINS ★ DAISY GUNS

Marx. #400 Engine with 4 Metal Cars (Electric) - #490 Engine with 5 Cars - Marx Engine with 6 Lionel Cars - Marx Engine with 4 Cars (Wind-up) - Lionel #8200 Engine with 4 Cars (Electric) - plus other Metal and Plastic Trains - Lionel and American Flyer Large Scale Switches - Daisy BB Guns: Model #95 - Model #105B - 1894 - Redy Ryder - #960 Shur-Shot - Crossman #760 Pellet.

Auction Note: Plan to attend this fine auction from local homes to be sold to the highest bidder.

TERMS: Cash or Travelers Checks or Good PA Check
Special Note ★ Please bring your own lawn chairs (chairs not provided)

Auctioneer:
MICHAEL P. WEAVER
R. 911 N. Main St.
Watsonstown, PA 17777
Phone: (717) 538-2227
Lic. #AU-002180-L
Licensed and Bonded -
Member of Local, State,
National Auctioneers' Ass'n



Sale inside - Lunch Available - Rest Rooms

PRESENTING AT PUBLIC AUCTION

**5 ACRE EAST ALLEN TWP FARMETTE
LARGE FARM HOUSE, BASS STOCKED POND,
CATASAUQUA CREEK TRACTOR, FARM EQUIP,
FURNITURE, HOUSEWARES, BROKER
PARTICIPATION INVITED**

**Auction: Friday, Nov. 25, 10AM,
(R/E Offered 12 Noon)**

3034 Walnut St. (Weaversville) Northampton, PA.
So off Rt 329 (Nor-Bath Blvd) between Bath & Northampton or N. off Weaversville Rd. in Weaversville.

Here is a 5 ac. +/- beauty w/a large 2-1/2 story, 3 or 4BR, 2 BA farm house w/large bright rooms; beautiful staircase, porches, OHW heat in move in condition. (2110 sq. ft. living space). Also has lg bank barn, outbuildings, 2-car garage & beautiful view of stocked pond. A must see if your looking for country beauty with easy access to major highways, schools, Lehigh Valley/N.J. area. Call Auction Co. for info & appt to inspect.

EQUIPMENT: Massey Ferguson 35 tractor, wide front, PTO, gd rubber, nice cond; 3 pt 2 btm plow; Massey Ferguson 3 PT sickel bar; McCormick 2-Row corn planter; Massey Ferguson side delivery rake; Massey Ferguson 8' disc; cultivator; 14' 2-whl farm wagon; scoop; Comet riding lawn mower; feed chests; wd ext ladder; wheelbarrow; Cl trough; scrap iron; misc items.
AUTO: 1990 Buick Skylark, 4-dr sedan; auto; garage kept; excel cond. 40,500 mi.
GUNS: Jefferson mod .22 & 12 ga DB percussion shotgun.

FURNITURE/HOUSEWARES: Depression, modern and Chippendale style BR suites; cherry corner cabinet; sofa & LR chairs; drum table stand; lamps; kit cab top; sgl beds; color TV (remote); Hoosier base; cedar chest; breakfast set; butcher bench; stereo; Coca Cola cooler; ant kit cupboard; file drawers; refrig; GE dryer; Kenmore washer; Housewares; cranberry pitcher & vase; Staffordshire plates; Homer Laughlin & Signature china; oil lamp; glassware; Anchor wash set; diamond wedding set; Knick knacks; bed linens; milk can; dresser set & misc unlisted items.

TERMS: Cash or approved PA check.

OFFERED BY:
Asher Bilheimer, Estate
Frank Yandrisevits, Attorney

Will Hahn Auction Co.
Professional Auction Service
Licensed and Bonded
(610) 837-7140
AU-001271-L

**D & K ENTERPRISES, INC.
GARAGE & EQUIPMENT AUCTION**

having lost our lease we have been commissioned to sell on

**SATURDAY, NOVEMBER 26TH
@ 9:30 AM**

at the shop 137 Broad Street Waverly, NY use Exit 61 or 60 off Rte. 17 Expressway Broad St. is the main business street in Waverly.

VEHICLES: 1989 Ford F450 - 7.3 diesel - 5 spd. - 19' Chevrolet rollback w/independent wheel lift; 1978 T-Bird Diamond Jubilee (glass T top); 1975 Ford F600, V-8, with 22' Kargo Van body (vehicles sold at 1:00 P.M.)

OFFICE: file cabinets; desks; credenza; Comdial executech 4 phone system; IBM Selectric typewriter; Mita DC 111C copier; phone module for Master, Via, Discover cards; Jenn Aire range-grill top & flat glass burners; Sharp microwave; Pfaff 917 Hobby Master Sewing Machine; Kenmore microwave

SHOP: Coates 10-10 tire changer; Snap On computer wheel balancer with Dayton & Bud adapters; Sun VAT 60 analyzer; Weatherhead hydraulic repair shop including: tools, dies; fittings; hose; IR upright 5 hp air compressor; Lincoln Welder; Oxy Acet. outfit; jack stands; floor jacks; Snap on 1 1/2 air; Snap On recycling & recharging station ACT 3120; Luma Mag MT 1480 timing meter; bench grinder; Makita grinders; engine stand; Cherry picker; creepers; small air compressor; 10T porta power; 30T press; Snap On pulper set & case; IR air grinder; 5T electric winch; 10" DeWalt radial arm saw; Snap On paint gun; headlight aimers; sand blaster; Karshner power washer; Alkota sal. heater; yardman chipper; IR 1" impact; Makita cut off saw.

PARTS: nut & bolt assortments & caddy's; oil filters; heater hose; Dexter 15000 lb. air axle & parts (new); brake parts; air axle; fel-pro gaskets; transmission kits; lights & bulbs; rebuilt parts fuel pumps brake, etc.; GP & Echlin electric; manuals; chrome 22.5 tubeless rims; air axle; truck tires; small block Chevy motor & parts; sand paper; cases oil; fuel conditioner; antifreeze; ladder - step, etc.; cabinets; shelving

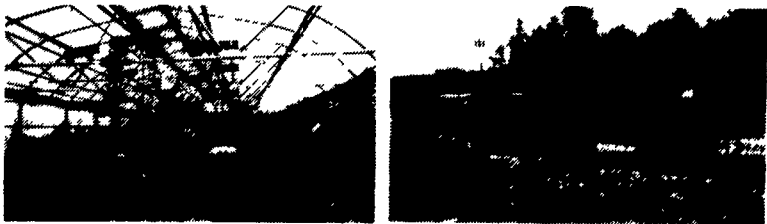
Plus many items too numerous to mention
AUCTIONEERS NOTE: Because of lease situation, building must be empty by Dec. 1, 1994; this prompts the auction, be prepared to move merchandise now. A large amount of quality Snap On Tools in excellent condition. Come, buy and move.

TERMS: CASH OR GOOD CHECK
LUNCH AVAILABLE

OWNER:
D & K ENTERPRISE, INC.
HOWARD W. VISSCHER
SALES MANAGER AND AUCTIONEER
NICHOLS, NY
607-699-7250

**Greenhouses and Farm Equipment
Auction
SATURDAY, DECEMBER 3, 1994
10 AM**

Viewing 2 hours prior to sale (rain or shine)



SALE LOCATION: 624 Deer Park Ave., Dix Hills, L.I., N.Y.
PARTIAL LISTING: Tractors - J.D. 4020 diesel, Oliver Row Crop 60, Ferguson 30, Farmall C w/cultivators. Trucks - 1983 Ford - F250, 1968 F600 w/12 ft. Box Body (7) Oehmsen. Greenhouses - (3) 25x96 gutter connected w/heaters and exhaust fans, (1) 21x96 w/heater, (2) 22x14 w/heaters, (1) 22x96 w/power vents & heaters, (2) 14x48 cold frame houses, (2) 14x96 homemade w/heaters, (2) walk-in Kold-Air coolers 12x26 and 12 1/2x12 1/2, (2) 10 ft. display cases. Misc. Attachments - 2 wheel PTO generator 25 KW, (3) Row Stan Hay Seeder, Easy-flow lime spreader, 3 pt. fertilizer spinner, bean sprayer - 400 gal. wood tank - 7 beds w/hydro boom, (2) wheel herbicide sprayer - 250 gal. J.D. corn planter 4rw, plateless - model 1240, 3 Bottom Oliver plow 3/16's, Holland 3 row transplanters , 3 pt. 6 ft. Rotocutter tow type, 2 wheel farm wagons, (1) 4 wheel farm wagon - (for hayrides), corn sprayer - Fordson - CN7 model, National pipe mover w/15 sections 4x40 Misc. Shop & Greenhouse Small Equipment to be added. (30) lengths 3x40 GLF pipe

By order of: **Russell Davis**

DIRECTIONS: LIE (495) to Exit 51 South (Deer Park Ave.) down 1/2 mile on left, next to Dix Hills Fire Dept. Watch for Auction arrow signs.

TERMS: Cash or certified funds. Payment in full day of sale.

516-734-6024
516-727-0542

Jim McBurnie, Auctioneer
1060 Little Pec. Bay Rd.
Cutchogue, NY 11935
Long Island