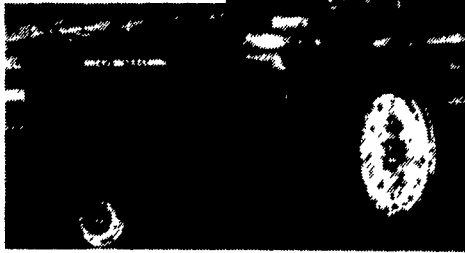


PLOWING DISC 13-1/2', mfg. by Long, very heavy, good condition, \$1,850. 410-833-9091

NI 36' corn elevator w/ chute, 1 1/2 hp motor and PTO, \$900. (301)898-7426.

Take Exit 20B
Off Of 83, 5 1/2 MI. West
To Belmont Farm.



J.D. 3020
Gas, Dual Hyd., Diff Lock
\$4,500
410-833-9091

**FOR SALE:
SCALING DOWN OPERATION**

Case IH 5140 MFD Cab **\$39,500**
600 Hrs. Exc. & Clean, 1 Owner Tractor,
Warranty thru 6-1-97 (\$500 Ded.)

Kinze 4x30 Liq. Fert. Planter w/Monitor,
Notil/Insect./Planted 150 Acres **\$10,000**

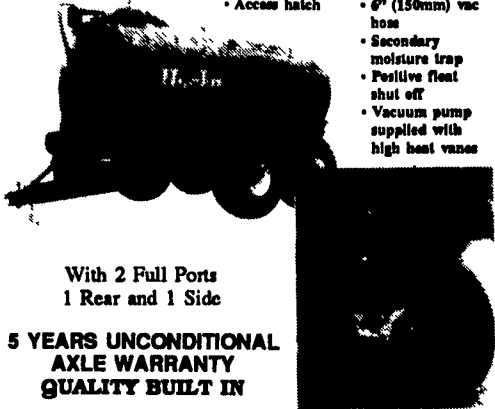
Demco 400 Gal. 3 pt. Sprayer, 40' Boom/2
Pumps Used Little

Carbon Co. Pa. 717-427-4029



**VACUUM TANKERS
VACUUM LIQUID
SPREADER**

- FEATURES**
- 6mm tank with dished ends
 - New tanker lined inside against rust with special coating
 - Fully baffled
 - Access hatch
 - Level sight gauge
 - 210 CFM vacuum pump, larger than normal size
 - 6" (150mm) vac hose
 - Secondary moisture trap
 - Positive float shut off
 - Vacuum pump supplied with high heat vanes



With 2 Full Ports
1 Rear and 1 Side

**5 YEARS UNCONDITIONAL
AXLE WARRANTY
QUALITY BUILT IN**

**HAULING TANKS If
You Have A Special Truck**



Or Flotation Vehicle, Husky
Can Help To Make The
Mounting Easy
**WE NOW CAN INSTALL YOUR
TRUCK MOUNT TANKER WITH
SPECIAL DRIVE CLUTCH
SYSTEMS AVAILABLE!**



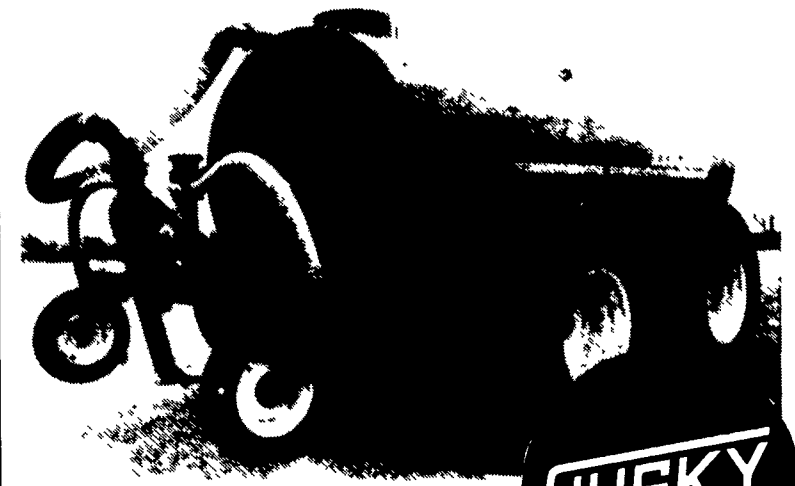
H5000 PUMP-
23000 LPM (6000
GPM) 20 TONS PER MIN.
CAN BE CHANGED FROM
"PUMPING" TO "AGITATING" AT
FULL SPEED

**HUSKY®
Liquid Manure
Handling
Systems**

See Us For All
Your PARTS &
SERVICE NEEDS
Related To Vacuum
Equipment!



(We Stock
Vacuum Pumps)



5000 Gallon Top Fill Tanker
As Pictured With Injectors
Good 10.5% Financing
Let's Get Together Now!

IN STOCK

**BINKLEY & HURST
BROS. INC.**

133 Rothsville Station Rd.
Lititz, PA 17543
(717) 626-4705



New Eager Beaver. TRAILER SALE

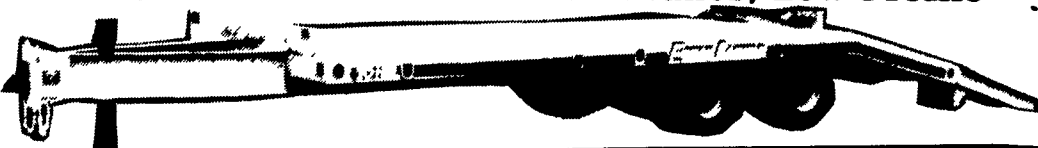
At Binkley & Hurst Bros., Inc. On Units In Stock
Or Available!

MODEL 10HA: 10 Ton Heavy Duty Air Brakes



- Capacity: 20,000 lbs. at 54 MPH
- Trailer Weight: 5,800 lbs.
- Tires: Eight 8.75x16.5 (E)
- Deck Width: 96", Length: 24',
- Overall Width: 96",
- Height: 32"
- Length: 29'6"

MODEL 20HAL: 20 Ton Air Brakes, Low Profile



- Capacity: 40,000 lbs. at 54 MPH
- Trailer Weight: 7,050 lbs.
- Overall Width: 96", Length: 29'6"
- Deck Width: 96", Length: 24',
- Height: 34"
- Tires: Eight 215/75R17.5 H Radial

**BINKLEY & HURST
BROS. INC.**

133 Rothsville Station Rd.
Lititz, PA 17543
(717) 626-4705
1-800-487-2978



**JD 5830 FORAGE
HARVESTER 1988**

4WD, 1548 Hours
4 Row Narrow Row Crop Head
7' Hay Pickup

Excellent condition

1-800-255-6567

Oliver Cletrac model
AG-6, wide gauge
model with Anderson
dozer attach, side
mount mower, good
condition, low engine
hrs.....\$5,900
Roadscraper, pull type,
176" wheel base..\$950
LEE BROS.
CRANBERRY FARM
609-726-9292 Days
609-726-1214 evenings

★ NOTICE ★

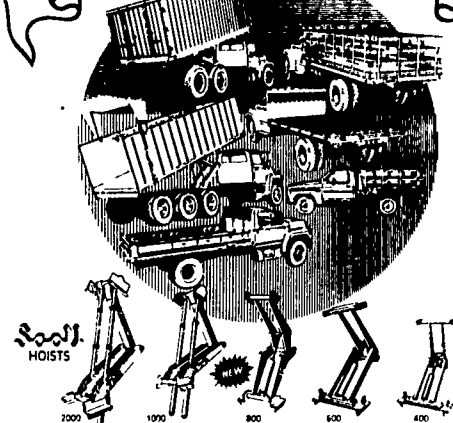
★ NOTICE ★

**BINKLEY &
HURST BROS.
IS PLEASED
TO
ANNOUNCE
THE
ADDITION
OF THE**



**LINE OF
TRUCK
BODIES/
HOISTS &
ACCESSORIES
TO
COMPLIMENT
OUR
PRODUCT
LINE UP**

TAFCO EQUIPMENT COMPANY
YOUR
SCOTT BODIES & HOISTS
FULL LINE TRUCK EQUIPMENT MANUFACTURER



- LEVEL LIFT HYDRAULIC HOISTS**
5 models - 2000, 1000, 800, 600 & 400 One Level Lift does the
job of two hoists only better
- MEDIUM AND HEAVY DUTY STAKE PLATFORMS**
Steel, aluminum and poly board racks are available
- SCOTT-LITE ALUMINUM PLATFORMS**
Available with aluminum racks bulkheads skirts 7 x 66 thru
12 x 94 sizes
- STAKELESS GRAIN BODIES (The Originals)**
14 - 24 ft lengths with 50 or 62 sides
- CONTRACTOR BODY**
10 gauge steel constructed with fold down sides
- ENSILAGE BODY**
12 gauge construction with hydraulic end gate



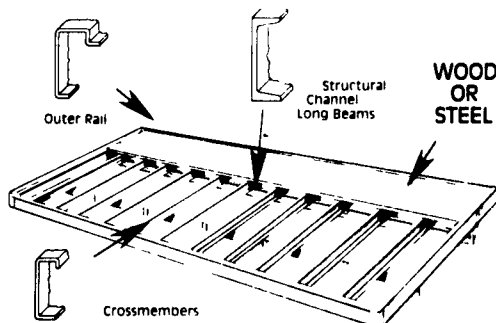
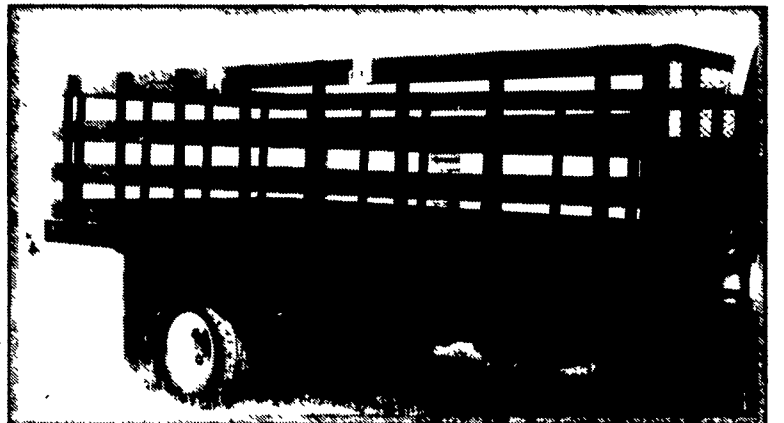
**MULTI-PURPOSE
BULK MATERIAL
DUMP BODY**



- IDEAL FOR HAULING:**
- WASTE BUILDING MATERIALS
 - SAND/ST
 - WOODCHIPS
 - FIREWOOD
 - MULCH
 - BRUSH
 - GRAM
 - PEAT
 - BULK FRUIT AND VEGETABLES
 - BULK TRASH
 - AND MANY OTHER PRODUCTS
- Ask About Level Lift Less Stress
Hoist System - Call Dean Now!

**See Binkley & Hurst For A
Quality Truck Body In Stock!**

**STANDARD • ECONOMY AND STRUCTURAL
SCOTT CITY STAKE BODIES**



In Stock: New -
12' Steel Truck
Body With Stake
Pockets and Bulk
Head NE0405
Standard Model

Optional Racks
available in Polyboard,
Aluminum or Steel
Racks

**Stop In And See Quality On Display
And Ask For Dean!**

**BINKLEY & HURST
BROS. INC.**

133 Rothsville Station Rd.
Lititz, PA 17543
(717) 626-4705
1-800-487-2978

