

Top Pennsylvania DHIA Herds By County For October

(Continued from Page D5)

DALE I KING	54.5	23976	913	3.8	769	3.2
JESSE L SPICHER	36.6	23168	900	3.9	755	3.3
JOHN K KAUFFMAN	93.7	22873	848	3.7	747	3.3
VALLEY VIFI FARM	66.8	22193	833	3.8	739	3.3
DAVID T HOSTETLER	47.9	22633	835	3.7	731	3.2
MERLE E YODER	37.9	22772	866	3.8	728	3.2
LOWELL J PEACHEY	57.2	22185	763	3.4	723	3.3
TIMOTHY KAUFFMAN	45.5	21900	800	3.7	723	3.3
R GLENN YODER	87.2	21805	830	3.8	720	3.3
J LOREN YODER	49.6	22356	826	3.7	718	3.2
DUNMIRE SONS	101.7	21759	754	3.5	714	3.3
FORGYS DAIRY	89.4	22841	748	3.3	714	3.1

MONTGOMERY

PATTY-RUN DAIRY FARM	67.6	22874	842	3.7	720	3.1
WAYNE HALLOWELL	62.4	21872	705	3.2	717	3.3
GEORGE SENEKO JR	58.5	21122	742	3.5	691	3.3
FRED SEIPT FAMILY	97.1	21457	734	3.4	665	3.1
RICHARD A BECHTEL	99.0	20085	716	3.6	653	3.3
MERRYMEAD FARM	95.6	20633	737	3.6	649	3.1
ROBERT HEWITT	32.4	20568	715	3.5	642	3.1
ROY S KOLB & SONS	100.2	20560	760	3.7	630	3.1
W B SAUL HIGH SCHOOL	21.6	19874	712	3.6	630	3.2
EDWIN A POLLOCK	83.8	19343	658	3.4	624	3.2
CORRECTIONAL INDUST	168.0	19248	699	3.6	621	3.2
CHESTER SOLTYS III	44.2	19307	692	3.6	618	3.2
HAROLD K HALTEMAN	66.4	19279	735	3.8	616	3.2
ARLIN HALTEMAN	62.9	18636	663	3.6	612	3.3
HAROLD MOSER JR	91.4	19146	730	3.8	607	3.2

MONTOUR

GARY & DIANE NEYHARD	24.5	20267	708	3.5	643	3.2
RANDY + PAT KITCHEN	62.1	18930	776	4.1	639	3.4
MAR-JA FARM	149.9	17654	746	4.2	598	3.4
PAUL E ROSS	23.4	18788	652	3.5	582	3.1
DAVID APPLEMAN	26.7	18253	669	3.7	572	3.1
SAMUEL + ADA BYLER	29.1	17015	623	3.7	542	3.2
PAUL E ROSS	31.1	16510	637	3.9	530	3.2
BUCKEY ACRES	50.1	17152	601	3.5	530	3.1
WHITEHALL ACRES	39.3	16797	604	3.6	522	3.1
DUANE LAPP	61.1	14956	604	4.0	497	3.3
ELI Y HOSTETLER	25.0	15308	562	3.7	488	3.2
WILLIAM J HAGERMAN	55.3	14361	498	3.5	485	3.4
ENOS BYLER	42.1	14056	515	3.7	459	3.3
DML BROWNSWISS FARNS	37.6	13082	510	3.9	455	3.5

NORTHAMPTON

KEYSTONE FARM	86.6	26724	991	3.7	862	3.2
FRANK MILLER JR	56.2	26404	918	3.5	834	3.2
KLEIN FARMS	60.4	25640	943	3.7	824	3.2
RICHARD W SMITH&SONS	85.7	24606	900	3.7	803	3.3
KARL MILLER	68.9	25406	866	3.4	786	3.1
EXCELSIOR FARM-FARMCK	79.1	23935	822	3.4	742	3.1
JUNIPERDALE FARM	77.7	23121	808	3.5	724	3.1
JAMES HEIMER	29.9	22123	811	3.7	709	3.2
THALER FARMS	152.1	21265	830	3.9	699	3.3
JOHN BOCKO	59.0	21955	818	3.7	695	3.2
JOHN P VALKWEC	49.1	20126	774	3.8	664	3.3
BREWER FARMS	65.6	20136	779	3.9	638	3.2
OTTS OWN FARM	69.8	20016	671	3.4	636	3.2
WINDHAVEN FARMS	52.1	19169	746	3.9	613	3.2
RED MAPL-SPRING FARM	37.7	18508	687	3.7	595	3.2

NORTHUMBERLAND

NORTH RUSH HOLSTEINS	19.6	27501	1046	3.8	859	3.1
FRED & TOM STROUSE	66.4	24477	947	3.9	782	3.2
R M D SHULTZ FARMS	85.2	24768	933	3.8	779	3.1
GARY TRUCKENMILLER	72.7	22660	852	3.8	713	3.1
ERNEST L WOLFE	63.0	19809	770	3.9	640	3.2
CLAYTON H SWARTZ	29.7	19527	715	3.7	632	3.2
GARVIN SCHAFFER	41.0	19346	597	3.1	627	3.2
LUKE N REBUCK	45.5	19550	746	3.8	617	3.2

SHOCH MANOR FARMS	90.5	18917	721	3.8	610	3.2
BRENT BUCKWALTER	114.3	17690	628	3.5	598	3.4
JERRY SMITH	48.3	17258	634	3.7	570	3.3
WAYNE KLOCK	37.2	17561	648	3.7	568	3.2
PAUL SCHMIDT	99.1	16142	594	3.7	538	3.3
LEON EPLER FARMS INC	61.2	16280	605	3.7	538	3.3
LLOYD B ZIMMERMAN	128.3	16596	611	3.7	535	3.2

PERRY

ED + WILMA MCMILLEN	44.8	23206	793	3.4	742	3.2
MELVIN S WEAVER	93.4	23414	821	3.5	725	3.1
ALRADA FARMS	95.0	22459	764	3.4	706	3.1
KENNETH R BENNER	69.1	22006	807	3.7	696	3.2
O'TOOLE BRO'S	55.7	21188	773	3.6	688	3.2
JESSE+BARB SINGLETON	51.6	21936	773	3.5	687	3.1
NEVIN G RICE	110.9	21327	718	3.4	685	3.2
MERVIN H HUBER	44.8	21585	757	3.5	684	3.2
JOHN-TIMOTHY ADAIR	55.7	21247	788	3.7	681	3.2
ROBT & BERNICE GABEL	41.4	21161	744	3.5	678	3.2
DEAN & ERIC MCMILLEN	88.8	20407	735	3.6	677	3.3
CARL E MC MILLEN	90.3	21397	774	3.6	676	3.2
EARL E BRUBAKER	55.8	21868	799	3.7	674	3.1
J WILMER HORST	52.1	21110	785	3.7	674	3.2
RICHARD L MAURER	53.1	20977	813	3.9	671	3.2

POTTER

IVAN SMOKER & SONS	110.6	23054	870	3.8	741	3.2
TITUS & DAVID RISSER	121.8	22025	880	4.0	738	3.4
IVAJEN FARMS	96.5	21507	878	4.1	731	3.4
DALE HOFFMAN + SONS	108.2	21482	812	3.8	709	3.3
JACK THOMAS SR	85.8	21050	793	3.8	696	3.3
DONALD THOMPSON	64.2	20759	772	3.7	683	3.3
GUY DUNN	56.2	19969	789	4.0	673	3.4
JOHN C TRAUB	38.2	21162	765	3.6	669	3.2
JACK KNOWLTON	51.5	20987	762	3.6	668	3.2
RON+CANDY COONEY	67.5	20612	780	3.8	667	3.2
R-OWN FARMS	81.5	20202	708	3.5	632	3.1
DAN + LEON TICE	55.7	19056	703	3.7	616	3.2
CLAIR-GARY HAMILTON	94.7	19052	750	3.9	609	3.2
J J FARMS	32.9	18546	681	3.7	602	3.2
JOHN-CAROL FOWLER	56.0	19057	596	3.1	601	3.2

SCHUYLKILL

JAMES D DUNN	61.1	25960	917	3.5	818	3.2
--------------	------	-------	-----	-----	-----	-----

JAMES RODICHOK	72.4	24028	825	3.4	806	3.4
BRIAN RUCH	50.8	24220	828	3.4	803	3.3
CARL A FARMS INC	87.5	24591	905	3.7	779	3.2
MILLER & REX INC	33.7	22460	820	3.7	721	3.2
JAMES HEPLER	70.3	21836	769	3.5	707	3.2
BRUCE LEATHERMAN	76.0	21612	821	3.8	687	3.2
RANDY MILLER	32.5	20480	734	3.6	682	3.3
FIDLER FARM	45.7	20118	679	3.4	662	3.3
WILBERT MOYER	46.3	20774	739	3.6	661	3.2
BURDELL TROXELL	34.1	20173	711	3.5	654	3.2
DALE HEISLER	87.3	19822	740	3.7	646	3.3
SUNTRAIL DAIRY FARM	70.0	19713	718	3.6	629	3.2
CLAIR GARMAN	44.5	19665	678	3.4	626	3.2
SNYDERLAND FARNS	59.6	18900	707	3.7	623	3.3

SNYDER

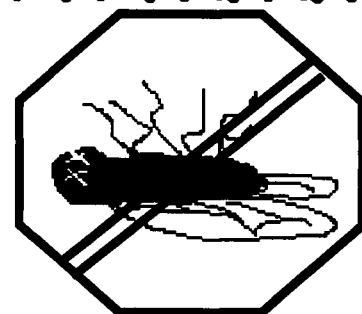
CHRISS + TRISH NIPPLE	52.3	23685	937	4.0	736	3.4
PASTURE GREEN FARM	34.4	23684	844	3.6	758	3.2
D&N HORNBERGER	39.6	23379	882	3.8	750	3.2
DARE E LAND	22.1	23639	886	3.7	749	3.2
JL & CL SHAFFER	36.5	22399	891	4.0	739	3.3
TIM-LAURIE HACKENBERG	48.7	22505	899	4.0	734	3.3
GLENN & BARB CARPER	48.7	22263	832	3.7	707	3.2
ALAN R NAREHOOD	31.3	21312	850	4.0	696	3.3
RANDOLPH A HOFFMAN	51.6	21430	800	3.7	694	3.2
H L NAREHOOD & SONS	57.9	20475	824	4.0	678	3.3
J+G + K+J BLANK	65.3	21111	764	3.6	669	3.2
FISHERDALE FARM	69.6	20263	750	3.7	665	3.3
COOKSAN DAIRY	94.9	20921	756	3.6	663	3.2
SAUDERDALE FARM	57.0	20813	781	3.8	661	3.2
SIDNEY+SUSAN HOFFMAN	86.8	20872	700	3.4	659	3.2

SOMERSET

NORTH VIEW FARM	110.3	27465	951	3.5	905	3.3
STONE ACRES FARM	51.7	23996	765	3.2	772	3.2
LEWIS W BERKLEY	67.1	23014	916	4.0	764	3.3
WILLIAM E HUNSBERGER	78.8	23373	843	3.6	762	3.3
GEORGE C STAHL	68.7	23588	895	3.8	758	3.2
GRANDVIEW FARM	101.4	23317	887	3.8	755	3.2
DAVE & DON STUTZMAN	94.8	22641	880	3.9	754	3.3
GARY & NANCY LYNCH	83.1	22648	776	3.4	753	3.3
GERALD + JUDY WEIGLE	42.1	23719	821	3.5	748	3.2

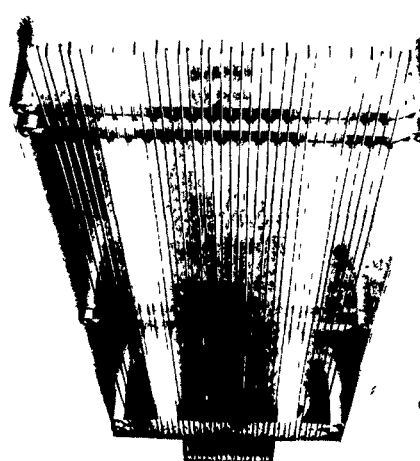
(Turn to Page D7)

Once there were Flies, Now they are GONE!!



EFFECTIVE FLY CONTROL

The AG-3030 is constructed of rust proof Aluminum. It has a large electrocuting grid that is powered by a high output industrial transformer. The AG-3030 will not become overwhelmed or clog by large fly populations.



• Gardners AG-3030 makes fly control easy and effective. This rugged unit provides safe and sanitary fly control without harmful chemicals.

• Easy to Install--

• Low Maintenance --

• Energy efficient-- uses less than 2.5 amps/unit

• Rapid Return on Investment

• Extensive USDA testing completed at Maryland EGG facility.

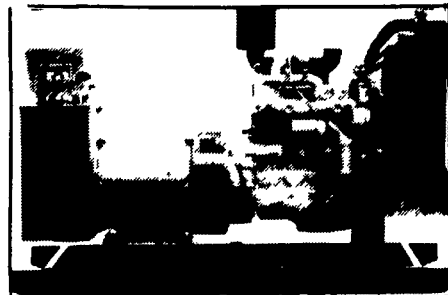
• 1 Year Warranty

Dimensions: 56"L x 19"W x 6"H
Shipping Weight: 36 lbs.

For Use In:

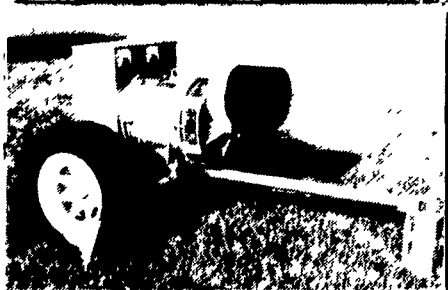
- EGG Layer Houses
- Poultry Breeding Facilities
- Livestock Arenas
- Hog Confinement Facilities
- Dairy Barns
- other problem areas.

GENERATORS



AUTOMATIC and
MANUAL SYSTEMS

DIESEL
L.P. GAS
NAT. GAS
NEW & USED



LEROY SOMER
PTO ALTERNATORS

BRUSHLESS
INDUSTRIAL GRADE
11 to 60 KW

READY FOR THE NEXT STORM?

For Sales and Service Call The People Who Know Generators

MARTIN ELECTRIC PLANTS

280 Pleasant Valley Rd., Ephrata, PA 17522-8620

Tel: 717-733-7968 Fax: 717-733-1981

HERSHEY

EQUIPMENT CO., INC.

255 Plane Tree Drive
Lancaster, PA 17603
(717) 393-5807

We Take Customer Satisfaction Personally