



Business

News

## Pennfield Hires Sales Representatives



Terry Fisher

LANCASTER (Lancaster Co.) — Pennfield Corporation has announced the addition of J. Walker Davison, Terry Fisher, and Michele Reasner to the Dairy & Livestock Feed Sales Division.

Walker Davison, a graduate of the University of Wisconsin, will provide sales and service for Pennfield Feeds in Bradford, Tioga, and Sullivan counties. For the past five years, he managed dairy heifer and dairy steer programs and milk replacer production at Hickok Veal & Beef. Prior to this, he was self-employed as a calf grower for eight years and owned and operated Davison's White-wash Service.

Terry Fisher received his degree in dairy science from Virginia Tech. Fisher has several years of experience in dairy feed sales. He will assume the responsibility of dairy sales consultant in eastern Lancaster county.

Michele Reasner received her



Walker Davison



Michele Reasner

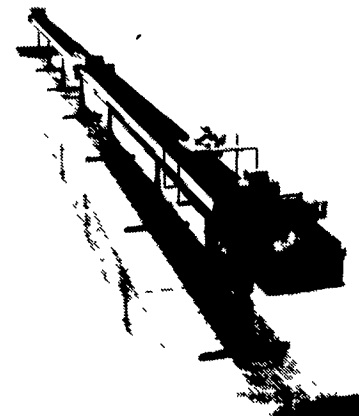
bachelor's in dairy production from Penn State. Reasner has been a member of A.R.P.A.S. since 1991. With six years of experience as a dairy nutrition specialist, she will bring her expertise to Pennfield Dairy Feeds-Sales & Service. She will provide sales and technical support in Frederick and Carroll counties in Maryland.

## Van Dale Introduces Belt Feeders, Conveyors

FORT ATKINSON, Wis. — Van Dale, a major manufacturer and marketer of farmstead equipment, announces the introduction of the new Maxim I™ line of belt feeders and conveyors for livestock feeders and dairy farmers.

Maxim I belt feeders and conveyors are designed for high capacity, fast delivery, easy maintenance, and low power requirements. The new Van Dale Maxim I line includes a belt feeder and conveyor with single V-belt drive and a belt conveyor with a hydraulic drive system that is unique to Van Dale.

All units feature a 16-inch wide high capacity belt which rides in deep trough concave sections. Belts are made of 120 pound polyester cord construction, with low temp PVC coating to withstand silage acids and temperature variations. Feeder and conveyor sections are constructed of 16 gauge, weather-resistant galvanized steel and are able to span distances of up to 20 feet without additional support.



**Maxim I belt feeders and conveyors are designed for high capacity, fast delivery, easy maintenance, and low power requirements. The new Van Dale Maxim I line includes a belt feeder and conveyor with single V-belt drive and a belt conveyor with a hydraulic drive system that is unique to Van Dale.**

## Poly-Lined Manure Storage Is N.Y. First

TULLY, N.Y. — Nearly 300 farmers and guests saw the first poly-lined manure storage installed in New York during Nutrient Management Field Days recently at Agway Farm Research Center (AFRC).

While liners are not yet required in New York, Pennsylvania-based Manada Construction has installed more than 40 liners in that state. Two other New York farms are scheduled to have liners in place before year-end. A 20-year warranty against leakage accompanies each liner.

"Management of manure and other farm nutrients is a leading concern for today's farmers," said Dr. Stan Weeks, director Agway Farm Systems Research and Product Development.

"With the Agway research herd increasing over the past two years, we had outgrown our current manure storage facility," he says. "We definitely needed to make changes and the poly-lined storage was the best way to store most of the manure away from the buildings while being conscious of environmental concerns. Plus we'll get twice the storage capacity for half the cost when compared to a concrete storage."



Manure storage lining is put in place at Agway Farm Research Center as 60 mil poly-liner is unrolled over the top of geo-textile material creating a secure barrier.

The poly liner at AFRC was completed in two days. First, a geo-textile material is laid down in strips and sewn together. Next strips of the 60 mil poly liner are put over the geo-textile. The heavier-than-landfill pole liner is then welded together creating the leak-proof encasement.

Storage capacity of this installation is one million gallons. It measures 225 feet x 100 feet x 12 feet and holds six months' manure from 350 animals. However, Larry Brubaker, owner of Manada

Construction, said his company has installed liners up to five million gallons.

Agway recommends using a squeezer/separator to separate manure solids from liquids. By doing so, manure is easier to move to a remote site for irrigation or hauling. In fact, a four horsepower pump is used at Agway Farm Research Center to move the liquids over one-half mile through a six-inch pipe at a rate of 250 gallons per minute.

## Agco To Acquire McConnell Tractor Assets

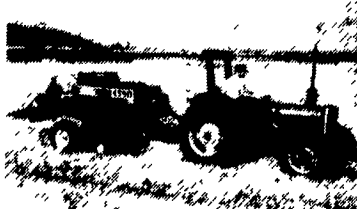
ATLANTA, Ga. — AGCO Corporation (NYSE-AG) has agreed to acquire the assets of McConnell Tractor, Inc., which is headquartered in Kinston, N.C.

Under the agreement, Agco will acquire certain assets of the company including accounts receivable, inventories, technology and production tooling. The acquisition price is estimated at approximately \$3.5 million.

McConnell Tractor manufactures and sells high-horsepower, four-wheel-drive, articulated tractors and parts through a network of approximately 200 dealers throughout North America. These tractors, which are known as supertractors, provide diesel engines with a range of 350 - 425 horsepower with unique features for pulling large implements and specialty farm equipment on large acreage farms.

The new tractor line, which retails in the \$100,000 - \$150,000 range, will be offered by Agco as a separate brand through a dealer network. Marketing plans are being developed for entry into the North American market in mid-1995. Agco plans to relocate the manufacture of the supertractors to one of its North American facilities.

## 4-Wheel Drive Utility Tractors Available



**New 4WD utility tractors from Massey Ferguson®—MF® 240 (41 PTO hp) and MF 253 (48 PTO hp—shown). Both new 4WD tractors handle many applications from loader to tillage operations and mowing hay to spreader chores.**

ATLANTA, Ga. — The MF® 240 (41 PTO hp) and MF 253 (48

PTO hp) are two of Massey Ferguson's best-selling two-wheel-drive utility tractors. Now both tractors are available in new four-wheel-drive models with the added versatility farmers are looking for in a mid-range tractor.

"These two tractors will handle many applications from loader work to small tillage operations, and from mowing hay to spreading manure," said Dennis Heinicke, Massey Ferguson marketing manager. "The MF 240 or MF 253 4WD tractor is the ideal small utility tractor on a large farm or the main workhorse tractor on a hobby farm, and can also handle almost any task in a landscaping

operation."

The 4WD MF 240 and MF 253 tractors are the same overall length as their 2WD versions, resulting in a shorter wheelbase for better maneuverability. This is achieved by mounting the 4WD engagement clutch on the center housing, eliminating the need for a spacer containing the 4WD gears and maintaining the short wheelbase.

Four-wheel-drive is engaged on-the-go with a T-handle at the operator's left. When 4WD is needed, the operator simply pushes down on the handle. There is no need to stop or use the clutch.

## Miller Promoted At Keystone Farm Credit

LANCASTER (Lancaster Co.) — Bruce Miller has been promoted to the position of vice president credit operations at Keystone Farm Credit. The announcement was made by Senior Vice President James R. Jonik.

Miller grew up in Red Lion on his family's crop and livestock farm. He attended school in the Red Lion Area District where he was active in the vo ag program and local, county, and state FFA.

He was graduated from Pennsylvania State University with a degree in food science and agricultural education.

An employee of the Farm Credit System for 16 years, Bruce has spent the last four years as branch manager at the Lancaster office. Prior to joining Keystone he was employed by York Farm Credit. In his new position he will be responsible for supervising the Lancaster, Quarryville, and Silverdale branch offices.



Bruce Miller