

SAFEMARK

You can't field better value

SAFEMARK

QUALITY • SERVICE • DEPENDABILITY • ECONOMY

THE HARD WORKING MULTI-ANGLE M/B

- Excellent drawbar pull with long-bar, short-bar lugs for improved traction.
- Designed for improved stability and roadability, plus reduced vibration.



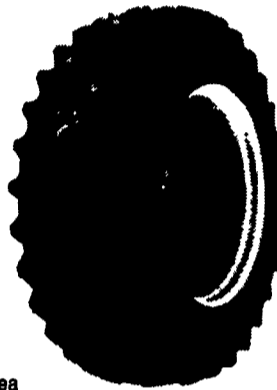
- Strong angle-braced lugs have self-cleaning design.
- High-strength polyester cord body and heavy duty rim shield help protect tire from damage.

Size	Ply	Price
11.2x24	4 Ply	\$145.00
11.2x28	4 Ply	\$155.00
12.4x28	4 Ply	\$159.00
13.6x28	4 Ply	\$179.00
14.9x28	6 Ply	\$259.00
16.9x30	6 Ply	\$329.00
18.4x34	6 Ply	\$379.00
15.5x38	6 Ply	\$289.00
18.4x38	8 Ply	\$449.00

POWER MARK L/S RADIAL II

Radial Rear Tractor Tire

- Radial performance at a significantly lower price.
- New cavity shape for low carcass stress and long, narrow footprint, improved durability.
- Unique longbar/shortbar and longbar/longbar tread design with increased lug count for excellent roadability.
- Continuous no splice tread improves tire uniformity and eliminates open tread splices.
- Belt package gives excellent bruise and puncture resistance.
- Engineered to full Tire and Rim dimensions
- Heavy duty trash shield for extra bead area protection with pry notch.
- Size markings on lug face for easy identification in storage.



Size	Price
15.5R38★	\$349.00
18.4R34★	\$439.00
18.4R38★	\$509.00
20.8R38★	\$659.00
20.8R42★	\$659.00

FARM UTILITY WAGON TIRES



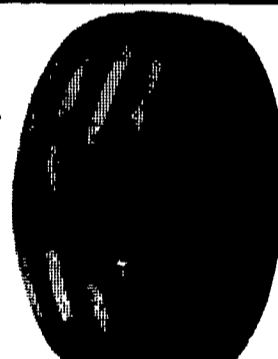
Size	Ply	Price
9.5L-14	8 Ply	\$44.00
11L-15	8 Ply	\$47.00
12.5L-15	8 Ply	\$64.00
12.5L-15	10 Ply	\$72.00
12.5L-16	14 Ply	\$89.00

SAFEMARK PREMIUM 3-Rib



Size	Ply	Price
5.00-15	4 Ply	\$34.00
6.00-16	4 Ply	\$36.00
6.00-16	6 Ply	\$39.00
7.50-16	6 Ply	\$56.00
10.00-16	8 Ply	\$82.00
11.00-16	8 Ply	\$99.00

POWER GLIDE 4-Rib



Size	Ply	Price
9.5L-15	6 Ply	\$77.00
11L-15	8 Ply	\$99.00
7.50-16	6 Ply	\$69.00
10.00-16	8 Ply	\$86.00
11.00-16	8 Ply	\$109.00

BATTERY BARGAIN

\$47

5-24 650 CA



- Unique Bill board vent appearance
- Higher cranking than conventional batteries
- Sizes to fit most domestic and import cars and light trucks

-Dependable performance in all weather conditions

FARM TRACTOR BATTERY

\$66

FC-30H 665 CA



- Rugged high impact case and cover for vibration resistance
- Increased starting power
- Built to last season after season
- Made in USA

A Proud Tradition of Quality, Value and Service

SAFEMARK

Division of Pennsylvania Farm Bureau

• QUALITY

• SERVICE

• DEPENDABILITY

• ECONOMY

CALL 1-800-PFB-TIRE For Dealer Nearest You

Participating SAFEMARK Dealers

- | | |
|---|---|
| <p>Adams
Mer-Bar Tire Service
Hanover, PA 17331
(717) 633-6412</p> <p>Biglerville Tire & Auto
Biglerville, PA 17307
(717) 677-8338</p> <p>Blair
Rhodes Farm Supply
Williamsburg, PA 16693
(814) 832-2491</p> <p>Bradford/Sullivan
Histand's Farm & Home Service
Rome PA 18837
(717) 744-2371</p> <p>Bradford
Isaac's Tire Sales
Canton, PA 17724
(717) 673-8121</p> <p>Centre
Dunkle & Grieb
Centre Hall, PA 16828
(814) 364-1421</p> <p>Chester/Delaware
Enfield Equipment Inc
Oxford, PA 19350
(610) 932-8858</p> <p>J&L Tire Service
Chatham, PA 19318
(610) 869-0450</p> <p>S.G. Lewis & Sons
West Grove, PA 19390
(610) 869-2214</p> <p>Stoltzfus Farm Service
Cochranville, PA 19330
(610) 593-2407/2408</p> <p>Clinton
Dotterer Equipment, Inc.
Mill Hill, PA 17751
(717) 726-3471</p> <p>Columbia
Steve Shannon
Tire Co., Inc.
Bloomsburg, PA 17815
(800) 343-TIRE
Rte. 487, Benton, PA 17814
(717) 925-2821
Rt. 11
Danville, PA 17821
(717) 275-5506</p> <p>Cumberland
Barrick Tire Sales
Newville, PA 17241
(717) 776-5782</p> <p>Dauphin
Farr Family Tire
Middletown, PA 17057
(717) 944-4001</p> <p>Erie
Mike's Auto Repair
North East, PA 16428
(814) 725-9091</p> <p>Franklin
Forrester Farm
Equip., LTD
Chambersburg, PA 17201
(717) 263-0705</p> <p>Stonham's
Waynesboro, PA 17268
(717) 782-3614</p> <p>Bruce B. Gamble & Sons
Concord, PA 17217
(717) 349-2670</p> | <p>Fulton
Clugston Farm Equipment
Needmore, PA 17238
(717) 573-2215</p> <p>Greene
Burns Tire Service
Waynesburg, PA 15370
(412) 627-8263</p> <p>Lancaster
Leola Tire Service
Leola, PA 17540
(717) 656-2574</p> <p>Messick Farm
Equip., Inc.
Elizabethtown, PA 17022
(717) 387-1319</p> <p>Lebanon
Farr Family Tire
Palmyra, PA 17078
(717) 838-0151</p> <p>Lebanon Valley
Implement Co., Inc.
Richland, PA 17087
(717) 866-7518</p> <p>Lehigh
Kermit K. Klatier
Lynnport, PA 18066
(610) 298-2011</p> <p>Joe's Battery & Tire
Allentown, PA 18103
(610) 437-4961</p> <p>Mifflin
Miller-Lake, Inc.
Belleville, PA 17004
(717) 935-2335</p> <p>Northampton/Monroe
Northampton Farm Bureau
Tatamy, PA 18085
(610) 759-3254</p> <p>Northumberland
Rovendale Supply
Watsonstown, PA 17777
(717) 538-5521
(717) 742-7521</p> <p>Schuylkill
Charles Snyder, Inc.
Tamaqua, PA 18252
(717) 386-5945</p> <p>Somerset
Maple City Tire
Meyerdale, PA 15552
(814) 634-0545</p> <p>Union
Allen Hoover Repair
Mifflinburg, PA 17844
(717) 966-3821</p> <p>Mifflinburg Farm
Supply, Inc.
Mifflinburg, PA 17844
(717) 966-3114/3115</p> <p>Washington
Canonsburg Supply
Equipment Co., Inc.
Canonsburg, PA 15317
(412) 746-2500</p> <p>York
Corn Hill Farm, Inc.
Etters, PA 17319
(717) 938-2012</p> <p>NEW JERSEY
Farmer's Brokerage
& Supply, Inc.
Allentown, NJ 08501
(609) 259-7324</p> |
|---|---|

NOW SERVING NEW YORK, NEW JERSEY & CONNECTICUT