

Somerset Farm Women Celebrate 80 Years

GAY N. BROWNLEE
Somerset Co. Correspondent
BERLIN (Somerset Co.)—
The Somerset County Society of Farm Women held its 75th Convention recently and celebrated its 80th birthday since being founded by Flora Black of Holland Farms, near Garrett, in the year 1914.

Black is said to have believed that farm women didn't get out enough socially and that gathering together once a month would be something special for them. Her idea became so popular that Society of Farm Women was launched. Later, a memorial recognizing that it all began in Somerset County, was placed beside Route 219 near Garrett.

The theme, "Up! Up! And Away, We Are Eighty Today,"

titled the convention program booklet for the 130 women who attended. Included were six past state presidents, including Luella Dupstadt and Mary Boyd, Somerset County; Edith Diehl and Martee Mentzer, Cumberland County; Marie Baughman, Franklin County; and Naomi Bupp, York County.

Dorothy Strickler, the current state president, presided over the installation of new officers: president, Becky Swallow, Central City; first vice-president, Nancy Jackson, Indian Lake; second vice-president, Sandy Wojcik, Cairnbrook; secretary, Shirley Weitzel, Central City; assistant secretary, Eleanor Cannoni, Windber; treasurer, Audrey Gilbert, Jennerstown.

Swallow succeeds Marion Sjoberg as county president.

Giving annual reports were presidents of the 12 county societies, with the exception of Number Nine, which is currently inactive.

They were Evelyn Hillegass, Society One; Dorothy Brougher, Society Two; Josephine Kerin, Society Three; Nancy Jackson, Society Four; Frances Werner, Society Five; Maxine Leventry, Society Six; Audrey Gilbert, Society Seven; Anna Jean Ferguson,

Society Eight; Violet Shuster, Society Ten; Connie Sturtz, Society Eleven; and Gladys King, Society Twelve.

The memorial service was conducted by Society Five which had one deceased member, Betty Deal, 1921 - 1994. Society Six also lost one member, Mabel Miller, 1914 - 1993. Two members of Society Ten died during the year. They were Anna C. Kormanik, 1927 - 1994; and Ruth V. Weaver, 1914-1994.

Anna Glessner, aged 90 years,

was honored by Society Two.

A presentation by the Pennsylvania state dairy princess Natalie Welch, was a treat during the afternoon session.

Soloist Jill Pulido sang during the forenoon session while the McFarlings provided afternoon entertainment.

Raye Diehl lead group singing, accompanied by Frances Ross at the piano.

Chaplain Kathryn Miller and assistant chaplain, Thelma Long, lead the group in devotions.



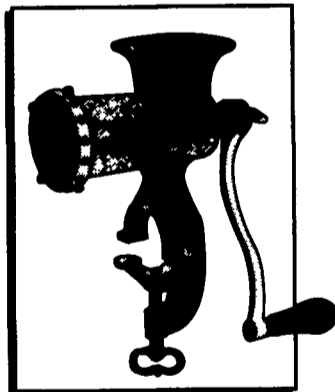
Annual reports are being given at the Somerset County Society of Farm Women 75th Convention held in Berlin.



Guests are preparing to dine on roast beef at the Somerset County Society of Farm Women 75th Convention.

CHOP-RITE TWO, INC.

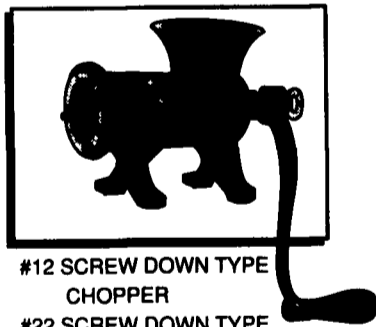
Quality American Workmanship!



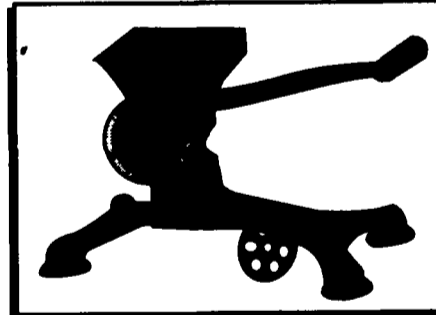
#5 CLAMP TYPE CHOPPER
#10 CLAMP TYPE CHOPPER

* Plates available in 3/16" (standard), 1/8", 1/4", 3/8", 1/2", 3/4" and 1".

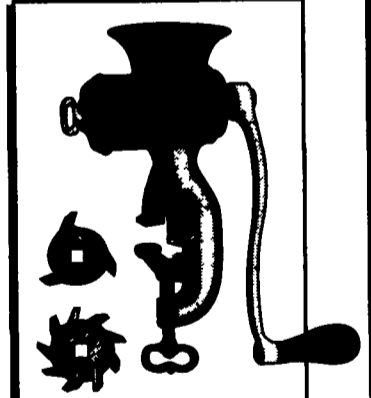
* V-Belt Pullies available for #10, #12, #22 and #32 choppers.



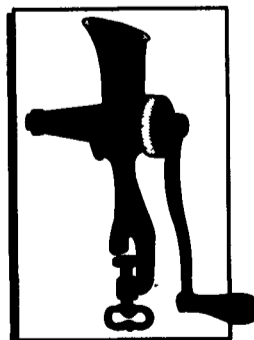
#12 SCREW DOWN TYPE CHOPPER
#22 SCREW DOWN TYPE CHOPPER
#32 SCREW DOWN TYPE CHOPPER



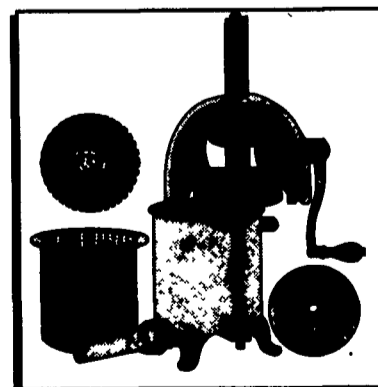
#1 CLAMPLESS TYPE CHOPPER



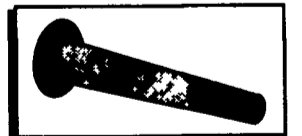
#3 FOOD CHOPPER



#27 HEALTH FOUNTAIN JUICER



SAUSAGE STUFFER, LARD & FRUIT PRESS



STUFFER HORN AVAILABLE IN VARIOUS SIZES



#16T CHERRY STONER

FOR MORE INFORMATION PLEASE CALL OR WRITE :

CHOP-RITE TWO, INC.

531 OLD SKIPPACK ROAD
HARLEYSVILLE, PA 19438
1-800-683-5858
FAX (215) 256-4363



❖ Made in the U.S.A.

❖ Easy to Clean

❖ Made from Cast Iron

❖ Quality Workmanship