



Thanks and Congratulations To
JOHN & PAUL SLOAT
 and
VIRGIL & ROSE CRANE
 York, PA

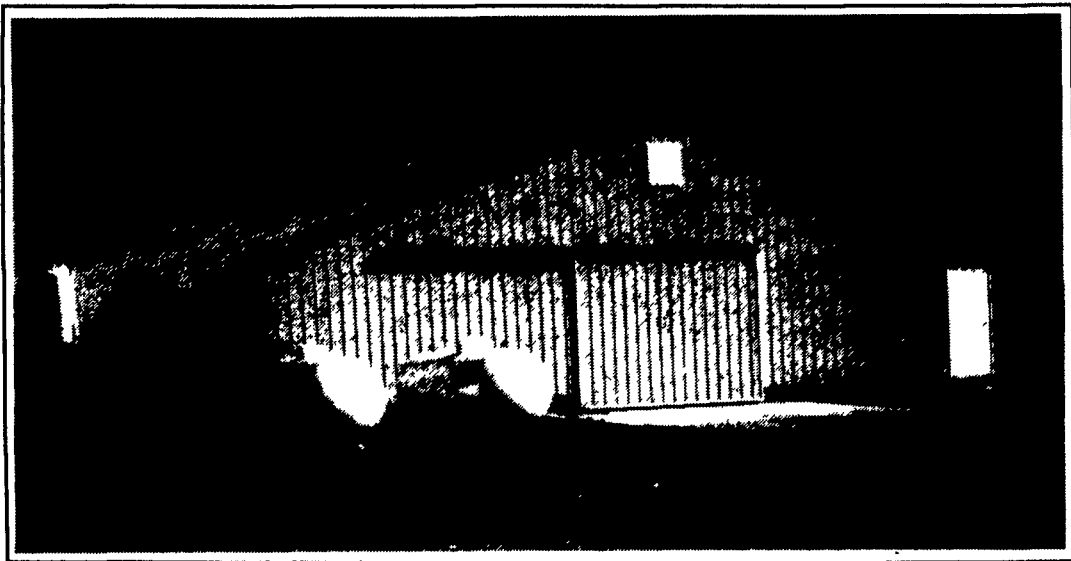


For Choosing Farmer Boy Ag for their 9,500 Tom Turkey House
50 ft. x 745 ft. Building

NEW & LATEST IDEAS
IN TURKEY BUILDING
& EQUIPMENT



Inside Turkey Facility



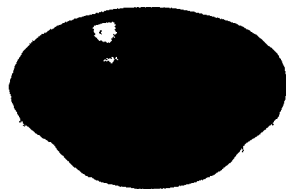
Cumberland

TURKEY PAN FEEDING SYSTEMS



SIMPLY THE LEADER

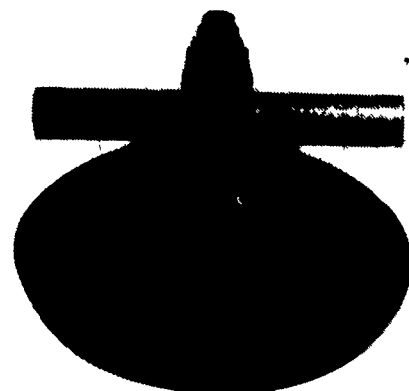
Cumberland continues being the leader in the manufacturing of poultry equipment by introducing a turkey feeding system for every application. Cumberland's Turkey Feeders have revolutionary features which make them both profitable and easy to maintain for the end customer. Cumberland Feeders deliver feed economically, efficiently, and dependably with savings for the grower. The Cumberland Turkey Pan Feeding System offers a poult turkey pan for young turkeys and two models of adult turkey pans, designed to withstand the rugged treatment of adult turkeys through grow-out.



NEW PLASTIC PAN
 Easier to clean... non-corrosive... lighter... Cumberland's plastic pan for both STF and RTF Adult Pan Feeders features improved structural engineering with stronger support gussets, a more durable and effective "hanger" for cleaning and a unique set of two feed-saving "catch walls" that significantly reduce raking and billout.

GRILLESS PAN FEEDER

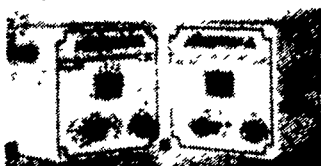
Growers who prefer a shallower pan for poults appreciate the classic Cumberland grilleless pan feeder. Its feed saver lip prevents waste from raking and billout, while the wide center cone (with its simple and easy feed level adjustment) keeps birds out of the pan and guarantees a more efficient "first in, first out" utilization of feed. It can be mounted on the line as stationary or free-swinging, depending on your preference.



GSI
FEED BINS



AIRSTREAM
 ventilation systems



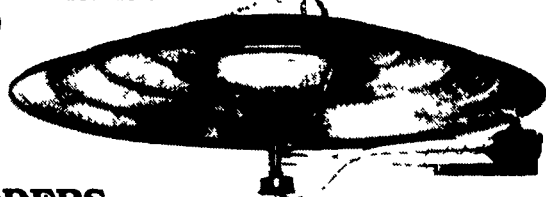
SCREW DRIVE CURTAIN COMMANDER™
 Screw Drive Automated Ventilation Curtain Controller by design is unsurpassed for durability and simplicity of operation.
 • Reversible brake drives available in 15 and 60 RPM models • 3,000 lb. lift capacity (contact factory for restrictions).



PURA-FIRE HEATER
 Choose From 2 Models
 • C80M - variable output (40,000 or 80,000 BTUH)
 • C225 - 225,000 BTUH unit. Each is LP or natural gas compatible and can be mounted inside or outside your confinement house. Unique "bent flame" design increases flame's surface area and heat chamber efficiency. More warm air is drawn across the fan and blown out side vent.



Shenandoah



BROODERS



FANS

Twistlink belt on Belt Drive for Ease of Adjustment to Keep at Top Performance.

di PLASSON

BROILER DRINKERS



TURKEY DRINKERS

Full Line Of Parts In Stock For Your Poultry And Hog Needs

Hours: M-F 7:00-5:00; Sat. 7:30-11:30



Swine & Poultry Systems Specialists
FARMER BOY AG.

410 E LINCOLN AVE (RT 422) MYERTOWN PA 17067

PH. 717-866-7565
 1-800-845-3374

11-12

WE SHIP UPS

Check Our Warehouse Prices



Call Shane Weller
For More Information
 ★ Excellent Contracts Available
 ★ Remodeling Existing Facilities