

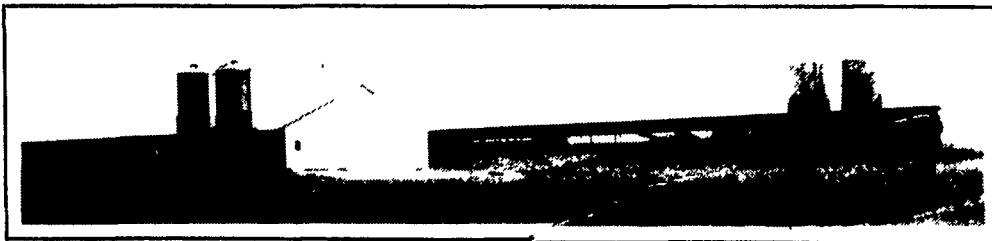


FARMER BOY AG INC.



Your Complete Swine, Poultry & Ventilation Equipment Center

**ADD
INCOME TO
YOUR FARM**



This 2-stage facility features a 50'x215' brooder building and a 50'x 520' growout building designed for 8,000 Toms.

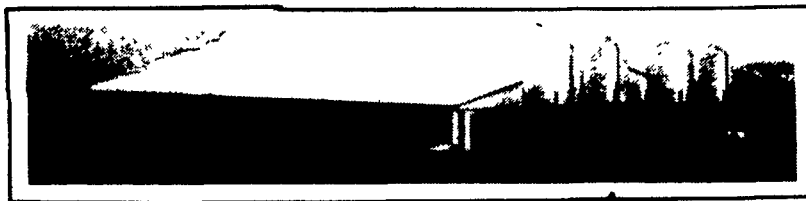
● Custom Design

● Assistance In Financing

CONTACT

FARMER BOY AG...

Your Professional Company



2200 HEAD FINISHER

● Assistance In Securing Building Permits

● Assistance In Nutrient Management Planning



BREEDING & GESTATION



FARROWING



NURSERY



FINISHING

★ PA'S OLDEST & MOST EXPERIENCED SWINE & POULTRY BUILDING & EQUIPMENT COMPANY

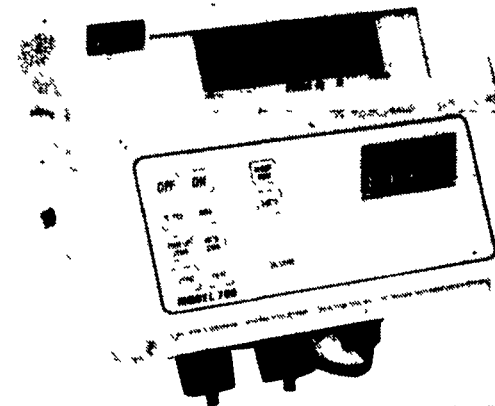
CHECK YOUR CURTAINS



- Do They Have Tears or Holes?
 - Rotten or Brittle?
 - Manual or Automatic Winches Working?
- Call Today For Repair, Adjustment Or New Installation.

TRU-TEST 700

Digital Weighing Systems



Key Features

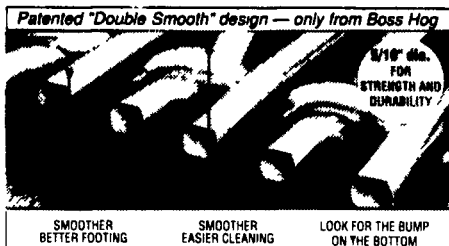
- Statistics Function
- Power Up Zero on/off
- Auto Zero on/off
- Fine Weight Mode on/off
- Internal Battery option
- Diagnostic Key makes servicing simple and easy as it assists to diagnose internal faults should they occur.
- Internal Battery Option gives you added flexibility - you do not need to be near a power source to weigh.



NEW



HEAVIEST WIRE FLOORING MADE



Patented "Double Smooth" design — only from Boss Hog
5/16" dia. FOR STRENGTH AND DURABILITY
SMOOTHER BETTER FOOTING
SMOOTHER EASIER CLEANING
LOOK FOR THE BUMP ON THE BOTTOM
Boss Hog's patented "Double Smooth" design plus the strength and durability of its exclusive 5/16" diameter wire make this your best flooring buy! Insist on Boss Hog, the wire with the bump on the bottom. From the nation's largest manufacturer of animal flooring

POLYFENCE - LINE FEED BUNKS

EASY INSTALLATION!

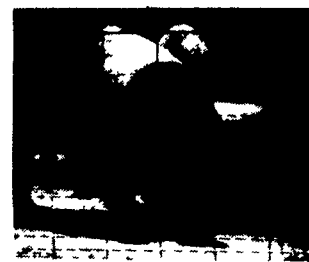
5 YEAR WARRANTY

- Each bunk rider runs with angles for cables and end caps
- Cattle like eating from a wire in the front
- S. back breaking work
- S will like the cast clean out all year long.
- S. heavy duty tractor 1/2" thick metal other
- S. heavy and tongue to the other bunks cause loss in weight gain
- Each bunk designed to fit together with each other

SPECIFICATIONS

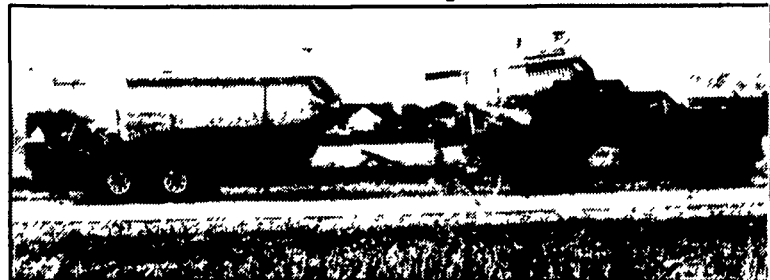
Material — polyethylene (Rockite) Size — 8 long 34" wide at the top
Weight — 120 30" wide at the bottom
Balls — stainless steel 1/2" x 3/4" 30" high on the high side (feeder wagon side)
End Panels — polyethylene (Rockite) 23" high on the short side (cattle side)

Galvanized Hog, Cattle & Horse Panels



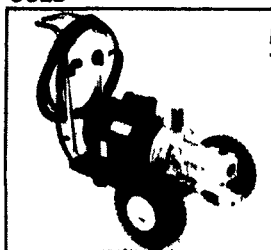
QUALITY GSI BINS

We Assemble, Deliver & Set-Up Bins On Your Farm



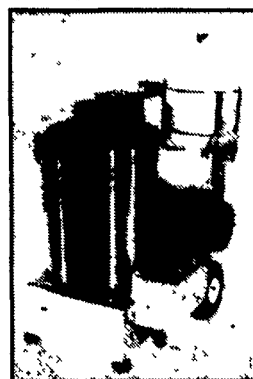
AQUA BLAST

ELECTRIC COLD



P3160EC

Pressure Rating 1800 PSI
Flow Output 3.0 GPM
Pump Type D/D - C/P
Horsepower 3.0 HP
Electrical 230V, 15 Amp, Single Ph
Discharge Hose 3/8"x40'
Dimensions 43"L, 19"W, 24"H
Approximate Weight 170 Lbs.



PRESSURE WASHERS

P4230EHL
Pressure Rating 2300 PSI
Flow Output 4.0 GPM
Pump Type D/D - C/P
Horsepower 5.0 HP
Electrical 230V, 30 Amp, Single Ph
Max. Output Temp 210°F
Fuel Capacity (US Gal.) 5 Gallon
Fuel Type (Burner) K1, #1, #2
Discharge Hose 3/8"x40'
Dimensions 38"L, 28"W, 44"H
Approximate Weight 430 Lbs.

Full Line Of Parts In Stock For Your Poultry And Hog Needs

Hours: M-F 7:00-5:00; Sat. 7:30-11:30



24 Hour Service

Swine & Poultry Systems Specialists
FARMER BOY AG.
INC.
410 E. LINCOLN AVE. (RT 422) MYERSTOWN PA 17067

PH. 717-866-7565
1-800-845-3374

11-12

WE SHIP UPS



2 Models Choose From

- C80M - variable output (40,000 or 80,000 BTUH)
- C225 - 225,000 BTUH unit. Each is LP or natural gas compatible and can be mounted inside or outside your confinement house. Unique "bent flame" design increase flame's surface area and heat chamber efficiency. More warm air is drawn across the fan and blown out side vent.



SEE STEVE, TODD OR JAY FOR YOUR PARTS AND EQUIPMENT NEEDS.