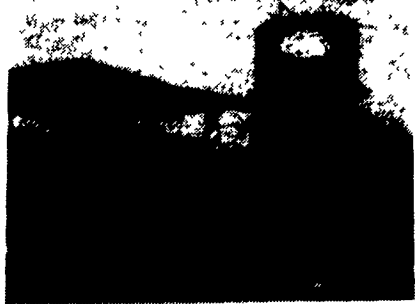


TANK FARM



(4) 12,000 gal. (1) 20,000 gal. vertical tanks complete with pumping station, very good condition **\$15,000**
\$9,000 OBO Must Sell

(NEW) HORIZONTAL TANKS

4,000 gal. Double Steel Wall, 2 Compartment, Coated **\$4,000**
6,000 gal. Double Wall, Steel & Glass **\$3,000**
8,000 gal. Double Wall, Steel & Glass **\$4,000**
(3) 10,000 gal. Double Wall, Steel & Glass **\$4,000**
12,000 gal. Steel **\$3,000**

410-337-3570
anytime



Case 580B Clean, straight machine, **\$9,500**



Case 580E Cab, 2x4, extendahoe, low hours, **\$21,500**



Case W4 Wheel Loader, 4 WD, Diesel **\$9,500**

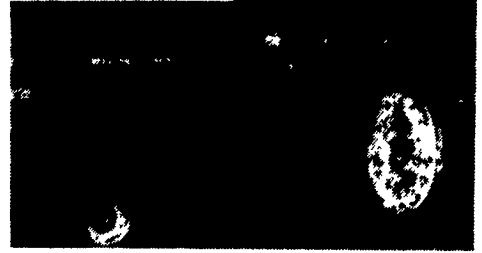


Dull Equipment Co.

717-949-3451

Ask For Lee or Dustin
Let's Do Business & Be Friends

Take Exit 20B
Off Of 83, 5 1/2 Mi. West
To Belmont Farm.



J.D. 3020
Gas, Dual Hyd., Diff Lock
\$4,500
410-833-9091

COWAN EQUIPMENT

Martinsburg, PA

814-793-4293 Day or Evening

Wanted: Fly Wheel & 3 Pt. Hitch
Complete For JD 730 Diesel

- JD 5400, 4x4 chopper
- NI 802, 4x4 w/chopper
- NH 1895, 4x4 chopper
- JD 6600 combine w/4 row head
- JD 6600 combine, Hillside, exc. cond.
- Gleaner F model combine
- JD 3155, cab & air, 4x4
- JD 4450, cab & air, power shift, 4WD
- JD 4430, 4 post, power shift
- JD 4250, 4 post, quad range
- JD 2950, cab & air, 4x4
- JD 2950, cab & air
- JD 2040 w/loader
- JD 2750
- JD 2750, 4x4
- JD 2555
- JD 4640, cab & air, power shift, '82 model
- JD 4440, cab & air
- JD 3155, cab & air, 4x4
- JD 2755, 4x4
- JD 2640
- JD 4020 power shift, dual hyd.
- JD 3020, diesel
- JD 520
- JD 310, backhoe & loader
- Ford TW25, cab & air, 4x4
- Ford 9700, cab & air
- Ford 7000
- Ford 6600
- IH 656, hydro
- White 2-105, cab, 4x4
- NI 325 corn picker, 12 roll bed
- NI 325 corn picker, 8 roll bed
- NI 324 wide row picker
- JD 443 corn head
- JD 4 row narrow conversion corn head
- Gleaner 430 corn head
- White 1730 QT loader
- JD 260 loader
- JD 158 loader
- Miller 14' offset disc
- Axle mount duals for IH 38".....\$650
- Roll guard for 2950.....\$650

WENGBERS, INC.

251 South Race St., Myerstown, PA 17067

717-866-2130

HOURS: Mon.-Fri. 7:30 to 5:00; Sat. 7:30 To Noon

NIGHTS,
PHONE.

717-866-7147

717-273-9089

FAX

717-866-4300



Tennant 92 Diesel Sweeper
4 Cylinder, Perkins Engine,
Low Hours- As Is- Needs
Transmission

\$1,900



1968 Cat 941, Direct Start,
Powershift, Pedal Steer,
Runs Good.

\$11,500



Fiat FL10C - 1980 - Rebuilt
Transmission, Very Good
U/C, Nice Machine.

\$18,500



1985 JCB 1550 Extendahoe,
ROPS, Runs Good.

\$12,500



Nissan N150-2 Mini Excava-
tor, Diesel, Low Hours, Runs
Good.

\$8,900



Cat V60B Forklift, Diesel,
Sideshift, 6000 Lb., Air
Tires, Runs Very Good.

\$10,500



Chipmore Diesel Chipper,
Rebuilt Engine, Runs Very
Good.

\$6,900



Miller 14' Offset Disc, Good
Condition.

\$3,900

**WANTED: Good Late Model Construction Equipment Need S/N
And Price When You Call**

TRUCKS/CARS

1972 Ford F600 Dump - Gas **\$3,900**
1987 Honda Prelude SI - 5 Spd. **\$4,990**
1984 Chevy Conv. Van **\$5,250**
1988 Honda Accord DX - 4 Dr. -
5 Spd. **\$5,450**
1988 Honda Accord LXI - 4 Dr -
5 Spd. **\$5,450**
1989 Honda Accord LXI - 4 Dr. -
5 Spd. **\$7,850**
1990 Acura Legend L Sedan - Auto .. **\$10,900**
1992 Lexus ES300 - Auto - 25K **\$22,900**

MISCELLANEOUS CONSTRUCTION

(50) New & Used Hoe
Buckets. **COME SEE**
(50) Loader Buckets **COME SEE**
(50) Set Forklift Forks. **COME SEE**
Cinder Spreader **\$1,000**
Ripper For Crawler **\$1,000**
1990 Club Car Golf Cart **\$1,350**
Tennant 92 Sweeper - Dsl - As Is **\$1,900**
(2) Air Hammer For Hoe Each **\$2,250**
Root Rake - 8' - JD 6 Way **\$2,500**
Root Rake - 9 1/2' - Case W30. **\$2,500**
Root Rake - 8 1/2' - JD 444C **\$2,500**
(3) Bomag Walk Behind Roller -
Diesel. Ea. **\$2,900**
Schramm 160 Air Comp. **\$3,000**
Miller 14' Offset Disc **\$3,900**
(3) Sheeps Foot Roller **\$2,900/\$4,500**
Mobark 9" Disc Chipper **\$4,500**
Euclid 10 Ton Rock Truck **\$4,500**
Vermeer 1560 Stump Grinder **\$5,900**
Essick VR42R Roller - 2 Ton. **\$5,900**
Chipmore 12" Chipper - Dsl. **\$6,900**
Koehring TVR30 Roller - Diesel. **\$6,900**
Euclid R18 Rock Truck - 1956. **\$7,500**
Eager Beaver Disc Chipper - Dsl **\$7,900**
IR 160 Diesel Compressor - 1990. **\$8,500**
Sicard Snowblower - V8 Gas **\$8,500**
Cat AP200 Paver - 1986 **\$13,500**
Galion 503 L Grader - 1972 **\$14,500**
Champion 715 Grader - 1977 **\$14,500**
(2) Wabco 35 Ton Rock Truck Ea. **\$14,500**
Ford 6610 w/Hyd Arm Mower - 1984 **\$18,500**
Euclid R35 Rock Truck - 1967 **\$26,500**

LOG SKIDDERS

Franklin 170 - Grapple - 1980 **\$11,500**
Clark Ranger 667 - Grapple - 1972 **\$11,500**
JD 540B - 1982 - Grapple **\$20,500**
Tree Farmer C7D - 1980 **\$22,500**

CRAWLER LOADERS

JD 350 **\$7,900**
JD 350B - ROPS **\$8,900**
JD 350B - Ripper - ROPS - 1972 **\$11,500**
JD 941 - Diesel - 1968 **\$11,500**
Fiat FL10C - ROPS - 1981 **\$18,500**

TRAILERS

1995 5 Ton Tag-A-Long - 6.5x14 **\$1,495**
1995 5 Ton Tag-A-Long - 6.5x16 **\$2,095**
1995 5 Ton Tag-A-Long - 6.5x18 **\$2,195**
1989 9 Ton Tag-A-Long **\$2,900**
1994 6 Ton Tag-A-Long - 8x19 **\$3,350**
1990 11 Ton Tag-A-Long - 8x20 **\$3,900**
1972 Trailmobile 30 Ton Lowboy **\$5,900**
1994 10 Ton Tag-A-Long **\$6,500**
Dorsey 30 Ton Lowboy **\$6,900**
1994 10 Ton Tag-A-Long w/Air. **\$7,450**
1994 20 Ton Tag-A-Long w/Air. **\$10,500**

DOZERS

JD 1010 - 6 Way **\$4,900**
JD 350C - 6 Way w/ Winch, 1975 **\$13,500**
IH TD8E - 6 Way - 1979 **\$18,500**
Komatsu D31P - ROPS - 1985 - 6 Way **\$21,500**
JD 450D - 1984 - 6 Way - ROPS **\$22,500**
Cat D5B - LGP - Cab - 1980 **\$28,500**
Cat D5B - Winch - ROPS - 1980 **\$33,500**

RUBBER TIRE LOADERS

Case W18 Cab - 1977 **\$18,500**
Fiat 645B Cab - 1979 **\$19,500**
Case W11B - Cab - 1988 **\$28,500**
Cat 920 - Cab - 1983 **Coming In**

BACKHOES/EXCAVATORS

Hoe Attachments From **\$2,000**
Ford 1801 - Gas **\$5,500**
Nissan N150-2 Excavator - 1988. **\$8,900**
Case 580C - ROPS - 1979 **\$9,500**
JD 410 - ROPS - 1973 **\$10,500**
JCB 1550 - ROPS - Ext. - 1985. **\$12,500**
JD 410 - Cab - 1982 **\$15,500**
JD 510 - Cab - 1980 **\$16,500**
JD 410B - Cab - 1984 **\$19,500**
Case 580K - ROPS - 1987 **\$19,500**
Case 580K - ROPS - 1988 **\$19,500**
JD 510B - Cab - Ext - 1984 **\$22,500**
JD 690B Excavator - 1978 **\$22,500**
JD 510B - ROPS - 4x4 - 1985 **\$24,500**
JD 690B Excavator - 1980 **\$26,500**
JD 410C - 4x4 - Cab - 1987 - Ext **\$27,500**
JD 510B - 4x4 - Cab - 1985 - Ext. **\$27,500**

SKID LOADERS

Backhoe For Bobcat 600 **\$2,500**
Backhoe For Case 1835B **\$3,500**
Backhoe For Bobcat 743 **\$3,500**
Toyota SDK8 - Diesel - 1989 **\$8,000**
NH 775 Diesel - 1977 **\$8,900**
Case 1835B - Diesel - 1987 **\$9,500**
NH 781 Diesel - 1989 **\$12,500**
Bobcat 943 - Diesel - 1990 **\$20,000**

FORKLIFTS

White Towmotor - LP Gas **\$2,500**
Case 580 - Gas - 21' - SS - 1967 **\$8,750**
Cat V50B - LP Gas - 5000 Lb. **\$9,500**
Cat V60B - Diesel - 6000 Lb. **\$10,500**
Cat V80C - LP - Air Tires - 1975 **\$10,500**
Case 584C - 21' - 1980 - SS **\$16,500**

2 FARM EQUIPMENT WANTED

Crawler loader w/backhoe
attachment, fair to good
condition. 610-689-5546
after 5PM.

Tire Chains for Cub Low-
boy 8.3x24 turf tire.
410/356-8170.

Tires Wanted: Firestone
30.5x32 and 24.5x32. Cas-
ings must be good. Do not
need much tread.
(410)867-1888.

WANTED: Cab to fit Allis
Chalmers 175 tractor, new
or used. 301/334-8431 af-
ter 8pm.

WANTED: Tree Spade
24-30" in Good Condition.
(717)432-4822.

Wanted Used 2 or 3 bottom
roll over plow, 3pth, IH pre-
ferred. Single row potato
digger. leave message or
call evenings.
(412)693-0304.

WANTED:

USED FORD & KUBOTA TRACTORS

Call 717-949-2000

Daytime