

6' Snow Plow for  
IH 284 Tractor  
**\$395**

**Manor  
Equipment, Inc.**  
Wheatfield Rd.  
Sinking Springs, PA  
**(610) 678-0828**

**SMITH FARM  
EQUIPMENT**  
30 Acker Rd.  
Newport, Pa.  
Perry County  
717-567-3562

IH 454D  
Oliver 1650D, New Engine  
IH 674 Dal.  
IH 966  
IH 986  
IH 1086  
Farmall M  
Farmall Cub  
Oliver 70  
MF TO20  
IH 715D Combine  
IH 843 Corn Head  
Gleaner M2 Combine  
NH 770 Harvester  
NH 851 Round Baler  
NH 855 Round Baler  
IH 37 Baler  
IH 430 Baler w/Thrower  
IH 440 Baler w/Kicker  
NH Wheel Rake  
NH 800 Spreader  
Shaver Post Driver  
Brilliant Chisel Plow  
Yellow Devil 200 Gal.  
Sprayer  
Woods 208 Mower

1975 Chevy Dump Truck  
w/Grain & Cattle Sides,  
11,000 GVW

**All Steel Frame  
Hay Wagon, 3x18**  
All Sizes, Steel  
Hay Feeders  
24' Feeder On  
Whls.  
Self Locking  
Panels

**J & L EQUIPMENT**  
St. Thomas, PA  
**717-369-2637**

**Martin Tractor**  
866 Greenspring Rd.  
Newville, PA 17241

**Used Tractors**  
AC WD w/Loader \$1,500, Farmall H, \$1,100;  
IH 450 \$1,800

**Used Tractor Parts**  
Most Makes and Models  
Have Large Selection  
Recent Arrivals: MM335, JD 2840,  
Farmall M; IH 706; Case 1370;  
IH 1466; JD 50; AC ED40; JD 3020; AC 7000;  
IH H; JD B; AC 200; JD 620; IH 574; IH 966;  
JD 1010; JD 5020; JD 4010- JD 2510; Oliver  
1755; MM M5; AC XT190; MM 445; IH 5488;  
4WD; AC 6080; JD 3010

Call (717) 776-7542  
for detailed information  
**MON-FRI 8-5 SAT 8-12**  
No Sunday Calls Will Ship UPS  
No Out-Of-State Personal Checks

**1 FARM  
EQUIPMENT**

**Best Buys in Used Equipment**

**TRACTORS**

IH 3588	IH 986	Case 1270
IH 4568	JD 4640	Case 4890
(2) IH 4366	JD 4840	CIH 7110, 2WD
IH 2424	JD 8630	(3) CIH 7120, MFD
IH 1486	JD 4240	CIH 9270
IH 1086	JD 2550 w/Loader	CIH 7110
IH 1066	JD 6400 w/Loader	Ford 4600
IH 856	Case 2290	Oliver 88
IH 966	Case 3294	

**DISCS**

KR 1577 16'8"	AC 2300D, 20'	CIH 496, 21'
KR 1927 25'	IH 496, 25'8"	JD 220
KR 4907 25'	Midland 1050, 26'	JD 230, 22'
KR 4927A	IH 496, 27'6"	JD 430 12'
KR 4966	IH 496, 24'7"	MF 520
KR 2442	IH 490	MF 820, 26'
BH 1437	IH 16'	Oliver 14'
SF 32'	IH 475	AC 20' cf
IH 480, 20'		IH 470, 18'

**COMBINES**

(2) Case IH 1480	JD 7720	NH TR86
(2) Case IH 1680	JD 4400	MF 750
CIH 1460	JD 6620	AC F
(3) IH 1480	JD 9500	AC M
IH 915	JD 8820	AC L2

**PLOWS**

JD 2500	IH 800, 10 Bottom
JD 6 Btm.	IH 720, 5x18,
Case 400 8'18"	Auto Reset
IH 560, 6 Btm.	IH 720, 5 Btm.
IH 531, 3x14	

**CHISEL PLOWS**

DMI Tiger II Sub-Soiler 7 Shank	Steiger 2211, slicer chisel, 14'
DMI Tiger II Sub-Soiler 5 Shank	SF HB 30 Chisel Plow
JD 910 Sub-Soiler, 13 Shank	BR 18' Chisel Plow
(2) Sunflower 21' Chisel Plow	Athens Chisel Plow, 3 Pt. 10' & 12'
IH 55 Chisel Plow, 10 Shank	KR 4513 Chisel Plow
IH 55 Chisel Plow, 13 Shank	Ferguson 10' Chisel Plow
Landoll Soilmaster Chisel Plow 11 Shank	Ferguson 9 Shank Chisel Plow

**MISC. TILLAGE**

DL 34' CF Packer	BR 16' CF Packer
KR 3127 Landsman	BR 23' Cultipacker
KR 3121 Landsman	BR 23' X-Fold Packer
KR 4129 38' fld. cult.	BR 25' X-Fold Packer
KR 4612 F-3 Fld. Cult.	(2) BR 14' Packer
IH 45 Fld.-Cult.	BR 14' Culti-Mulcher
IH 80 Cultivator	BR 25' CultiMulcher
BR 25' CultiMulcher	Sunflower 17' Land Finisher
	Landoll Tillall 875 Landsman

**DRILLS**

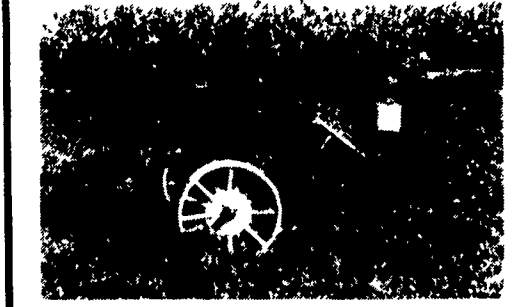
GP 24'	JD 530 30'	w/cultiplanter
(3) GP 15'	JD 8100	CIH 5100 Twin Drills
GP 20'	(3) IH 5100 Drill	CIH 5400
GP 30'	IH 510, 16x7	w/Cultiplanter, 26x7
JD 8300	21x7, 24x6	CIH 5100, 29x6
w/Cultiplanter	IH 5100 21x7	MF 43, 22'
JD 8300 21x7	w/cultiplanter	
(3) JD 750, 15 Ft.	Case IH 5100 21x7	

**MISCELLANEOUS**

AC 333 No-Till Planter	Mohawk 960 8' Rotary Cutter
AC 600 Planter	Woods 15' Batwing Mower
AC 600 Planter, 18'	NI 323 Corn Picker, 1 Row
JD 7200 16x30 Planter	NI 352 Manure Spreader
JD R Manure Spreader	Badger TA54 Blower
JD 71 Bean Planter	Berthoud D6 Sprayer
IH 12 Row Planter	Gehl 1860 Rd. Baler
IH 56 Blower	UFT 400 Grain Cart
NH 30 Blower	Kinze Grain Cart
NH 575 Baler	Kinze 900D Planter
Schulte 5026 Rotary Cutter 26'	John Blue Sprayer



**MOWERS:** 3 point or trailing features: guards & blade, move back and forth cuts like a scissors, virtually no plugging.



**DEEP TILL SLITTER:** Available in 1 or 2 shanks, optional hydraulics. On Sale Now

**I & J MANUFACTURING**  
Dept. LF, 5302 Amish Road - Gap, PA 17527  
**717-442-9451**  
(Call Between 8:45-9:00 A.M. Weekday Ask For Jake)

Winter is coming Be Prepared

**AGRO-TREND**

**Snowblowers**

Widths	Recommended H.P.	Price
5 Ft.	20-35	\$1,625 <sup>00</sup>
6 Ft.	30-40	\$1,900 <sup>00</sup>
7 Ft.	40-75	\$2,150 <sup>00</sup>
8 Ft.	70-100 w/hyd. chute	\$2,500 <sup>00</sup>
8 Ft. Double Auger	70-100 w/hyd. chute	\$2,900 <sup>00</sup>
9 Ft. Double Auger	100-150 w/hyd. chute	\$3,700 <sup>00</sup>

8 Ft. Models in stock  
- others available by order  
limited supply order today  
All prices F.O.B. Milton, Pa

Weaver's Equipment Sales  
RD#3 Box 819 Milton, Pa  
Phone: 717-212-2212 No Sunday Calls

**J & F EQUIPMENT**  
**(717) 859-3283**  
No Reasonable Offer Refused  
Custom Repairs On All Makes Industrial & Farm Equipment

'85 JD 350C 6 way rebuilt motor new undercarriage \$15,000	JD 450B rebuilt motor, rebuilt steering clutches \$11,500

**WE ARE BUYERS FOR CONSTRUCTION EQUIPMENT NEEDING REPAIRS**

Case 450 crawler loader, new pins & bushings.....	\$10,500
Case 450 crawler loader, needs work.....	\$4,200
Cat 941 crawler loader.....	\$9000
JD 350 or 450 ripper, good condition.....	\$1,000
JD 350C Crawler Loader, good condition.....	\$13,000
JD 450B Crawler Loader w/rebuilt motor.....	\$12,000
JD 9300 Backhoe Attachment.....	\$3,200

'86 JD 310C A1 \$19,500	JD 450 D, rebuilt motor \$19,000

**HOOPER**  
HOOPER EQUIPMENT INC  
MIDDLETOWN, DE

**(302) 378-9555 1-800-341-4028**

**case**