

**Phila. Fruit Market**

**PHILADELPHIA Terminal Prices as of 09-NOV-94 MOSTLY CLOUDY 55-68**

**CITRUS FRUITS ---GRAPEFRUIT:** MARKET STEADY 4/5 buctns FL Indian River Red 27s 7.00-9.00 few higher 32s 7.00 36s 7.00-8.00 few 9.00 fr qual 6.00 40s 6.00-8.00 few high as 9.00 fair qual 5.00 48s 6.50 fr qual 5.00 56s fr qual 5.00 White 27s few 8.50 32s few 7.50-8.50 Gulf Coast Red 23s 5.00-6.00 27s 5.00-6.00 32s 5.00-6.00 36s 5.00-6.00 40s 5.00-6.00 48s 5.00-6.00 ---LEMONS: MARKET STEADY 4/5 buctns FL 20s 11.50 fr qual 14.00-18.00 140s 16.00-17.00 mostly 16.00 fr qual 11.50-13.00 few higher 165s 13.00-14.00 fr qual 10.50-12.00 200s 12.50-13.00 fr qual 10.00-12.00 CA 115s fr qual few 18.00 140s fr qual 13.00 few 14.00 165s fr qual 12.00 few 13.00 ---LIMES: MARKET ABOUT STEADY 10 lb ctns MX Seedless Type 48s 3.00-3.50 few 4.00 54s 3.00-3.50 few 4.00 63s 3.00-3.50 ---MISC CITRUS: 2.5 kg ctns SP Clementine 32s 6.00 10 kg ctns SP Clementine 120s 18.00-19.00 126s few 23.00-24.00 132s 18.00 ---ORANGES: MARKET STEADY ctns CA Navel 56s 19.50 72s 18.50 88s 16.00 113s 11.50-12.00 fair qual 10.50 138s 10.50-11.00 4/5 buctns FL Navel 48s 9.50 56s 9.00-10.00 ord cond 3.00-4.00 64s 9.00-10.00 80s 9.00 ord cond 3.00-4.00 Hamlins 64s 8.00 80s 7.00-9.00 mostly 8.00 few 6.00 100s 7.00-8.50 mostly 7.50-8.00 few 6.00 125s 7.00 ---TANGELOS: 4/5 buctns FL Orlando 80s

11.00 100s 10.00 125s 9.00 ---  
**TANGERINES: MARKET STEADY 1/2 bu ctns CA Fairchild med 7.00 4/5 buctns/ ctns FL Sunburst 80s 14.50-16.00 few 17.00 100s 13.00-15.00 120s 12.00-13.00 150s 9.50-11.00 mostly 10.00-11.00 few 11.50 176s 8.00-9.00 180s 8.50-9.00 210s 8.00 ---TEMPLES: OFFERINGS NONE**  
**BERRIES ---BLUEBERRIES: OFFERINGS LIGHT flts 12 6-oz flmwrpd cups OR AIR med 36.00 ---CRANBERRIES: MARKET STEADY ctns 24 12-oz flmwrpd MA Early Black 28.00 few 30.00 ---MISC BERRIES: OFFERINGS LIGHT flts 12 5.6-oz flmwrpd cups GU AIR Blackberries 32.00 poor cond 5.00 ---RASPBERRIES: MARKET ABOUT STEADY flts 12 6-oz cups with lids CA AIR Red 18.00 flts 12 5.6-oz cups flmwrpd GU AIR Red fair cond 15.00 ---STRAWBERRIES: MARKET ABOUT STEADY WIDE RANGE IN QUALITY flts 12 1-pt bks CA lge one label 18.00-20.00 med-lge 9.00-10.00 mostly 10.00 occ 12.00 one label 13.00 fair qual 6.00-7.00 med 8.00-10.00 fair cond 5.00 FL med-lge 14.00**  
**MELONS ---CANTALOUPS: MARKET ABOUT STEADY 1/2 ctns/crns AZ 9s 9.00-10.00 12s 10.00-12.00 few 9.00 15s 15.00 18s 16.00 GU 9s few 12.00-14.00 12s few 12.00-14.00 15s 12.00-14.00 ---HONEYDEWS: MARKET ABOUT STEADY 2/3 ctns AZ 5s 6.00-7.00 6s 6.00-7.00 CA 5s fair cond 5.00 6s fair cond 5.00 9s 9.00 MX 5s 7.00-8.00 6s 7.00-8.00 TX 4s 6.00 5s 7.00-8.00 6s 7.00-9.00 8s 8.00 ---MISC MELONS: MARKET STEADY 2/3 ctns AZ Casaba 4s 14.00 5s**

14.00 Crenshaw 5s 14.00 6s 14.00 Orange Flesh 4s 14.00 5s 14.00 8s 14.00 9s 14.00 MX Orange Flesh 5s fair cond 7.00-8.00 6s fair cond 7.00-8.00 8s fair cond 5.00-6.00 9s fair cond 5.00-6.00 ---  
**WATERMELONS: MARKET STEADY ctns per ctn FL Sangria 3s 18.00 Red Seedless 4s 21.00-22.00 5s 21.00-22.00 GA Sangria 4s 14.00 SC Yellow Meat 4s 15.00 5s 15.00 TX Allsweet 3s 18.00**  
**NON-CITRUS FRUITS ---APPLES: MARKET STEADY ctns trypk CA U.S. ExFcy Granny Smith 88s 18.50 100s 15.50 U.S. One Fuji 56s 20.00 64s 20.00 72s 20.00 100s 15.00 113s 15.00 125s 15.00 NY U.S. ExFcy Gala 88s 18.00 SC No Grade Marks Granny Smith 100s 10.00 WA WAExFcy Red Delicious 80s 13.50-15.00 88s 13.50-15.00 preferred labels 15.50-17.00 100s 13.00-15.00 few 12.50 113s 13.50 138s one label 16.00 Golden Delicious 88s one label 18.00 100s one label 15.00 one label 22.00 Granny Smith 88s 21.00 ord cond 6.00-8.00 100s 19.00 ord cond 6.00-8.00 Gala 80s 32.00 100s 27.00 U.S. ExFcy Golden Delicious 80s 13.50-14.50 88s 13.50-14.50 Granny Smith 100s 19.00 113s 21.00 WAFcy Red Delicious 64s 11.00 72s 11.00 80s 11.00 88s 11.00 100s 11.00-12.00 113s 11.00-12.00 125s 11.00 138s 11.00 Golden Delicious 100s 14.00 113s 13.00 138s 12.00 U.S. Fcy Granny Smith 100s 15.00 113s 17.00 ctns celpk WA U.S. ExFcy Golden Delicious 96s 21.00-23.00 buctns lse NJ No Grade Marks Granny Smith 8.00 ---APRICOTS: OFFERINGS NONE ---**

**AVOCADOS: MARKET SLIGHTLY LOWER ctns 2 lyr CL Hass 50s 52.00-54.00 60s 50.00 ctns 1 lyr DR Various Greenskin Varieties 12s 6.00-8.00 14s 6.00**  
**00 ---BANANAS: MARKET STEADY 40 lb ctns IMPORT 10.00 fair qual 7.50-8.75 fair qual appear 6.00-6.50 40 lb ctns bagged IMPORT 10.50 ctns institutional pk IMPORT 12.50 ---CHERRIES: TOO FEW SALES TO QUOTE ---FRUITS OTHER: lugs CA Quince 36s 16.00 ---GRAPE: MARKET ABOUT STEADY 23 lb lugs CA Ribiers 14.00 Red Globe 20.00-21.00 20-21 lb lugs bgd CA Thompson Seedless 18.00-19.00 small 14.00 Ruby Red Seedless 15.00-19.00 small 13.00-15.00 Red Seedless fair cond 12.00-13.00 Ribiers 13.00-18.00 Black Seedless 22.00 20-21 lb lugs wrpd CA Thompson Seedless fair cond 16.00-17.00 Black Seedless fair cond 15.00-16.00 mostly 15.00 18 lb lugs bgd CA Thompson Seedless one label 21.00-23.00 Ruby Red Seedless 18.00-19.00 mostly 18.00 18 lb lugs wrpd CA Thompson Seedless 20.00 preferred labels 26.00 fair cond 15.00-16.00 16 lb lugs bgd CA Thompson Seedless 20.00-21.00 16 lb lugs wrpd CA Thompson Seedless one label 24.00-25.00 Flame Seedless one label 23.00 ---KIWIFRUIT: MARKET STEADY flts 1 lyr CA 30s 8.50 36s 8.00 39s 7.00-8.00 mostly 7.00 few 8.50 ctns 23 lb lse CA 39 sz 14.00-16.00 45 sz 15.00 ---MANGOES: MARKET PUERTO RICO LOWER, OTHERS ABOUT STEADY ctns 1 lyr BR**

Tommy Atkins 8s 12.00 9s 12.50 PR Keitts 10s 9.00-10.00 12s 9.00-10.00 ---  
**NECTARINES: OFFERINGS NONE ---PAPAYA: MARKET STEADY 10 lb ctns HI AIR 9s 14.00-15.00 10s 14.00-15.00 12s 14.00-15.00 JM 10s 10.00 12s 10.00 ---PEACHES: OFFERINGS NONE ---PEARS: MARKET STEADY std ctns OR ORBx Fcy Seckel 15.00 std ctns wrpd OR U.S. One Bosc 90s 22.00 WA U.S. One Bartlett 90s 18.00-19.00 110s 18.00 D'Anjou 80s 18.00 90s 17.00-18.00 100s 16.00-18.00 few 15.00 110s 15.00-16.50 120s 15.50 135s 14.50 Bosc 70s 19.00 80s 19.00 90s 19.00-21.00 100s 18.00 110s 17.00 WAFcy Bartlett 110s fair appear 10.50-13.00 36 lb ctns CA U.S. One Bartlett 100 sz 12.00-13.00 110 sz 12.00 120 sz 10.00-11.00 135 sz 9.00-10.00 ---PERSIMMONS: MARKET STEADY ctns 1 lyr CA Fuyu 20s 7.00-8.00 24s 6.00-7.00 25s ord cond 2.00-3.00 Hachiya 16s 8.00 20s 7.00-8.00 mostly 7.00 few 9.00 few 6.00 21s 6.00-7.00 mostly 6.00 23s few 8.00-9.00 24s 6.00 occ 5.50 ctns 2 lyr CA Fuyu 36s 11.00-12.00 42s 10.00-11.00 48s 9.00 occ 10.00 ---PINEAPPLES: MARKET STEADY ctns 1 lyr HI AIR 6s 11.50-12.00 ctns 2 lyr CR 12s 9.00-10.00 14s 9.00-10.00 ---PLANTAINS: 50 lb ctns CR 15.50 ---PLUMS: OFFERINGS NONE ---POMEGRANATES: MARKET STEADY lugs 2-lyr CA Wonderful 20s 20.00-22.00 40s 12.00-13.00 48s 9.00 56s 8.00 ---PRUNES: OFFERINGS INSUFFICIENT TO QUOTE**

## Increase Your Income From Milk Sales

We are looking to increase our high quality milk supply in Chester, Berks and Lancaster Counties.

- No Coop Dues
- Solids Non Fat Premiums
- Quality Premiums
- Lower Hauling Rates & Stop Charges

From a proud neighborhood dairy in the 1920's to a modern manufacturing company of the 1990's, the Dietrich family-owned business continues to move forward. With the dedication of three generations and a heritage rich in experience and innovation, Dietrich's Milk Products faces the future with confidence. Give us a call and see what we are all about.



### Dietrich's Milk Products, Inc.

100 McKinley Avenue  
Reading, PA

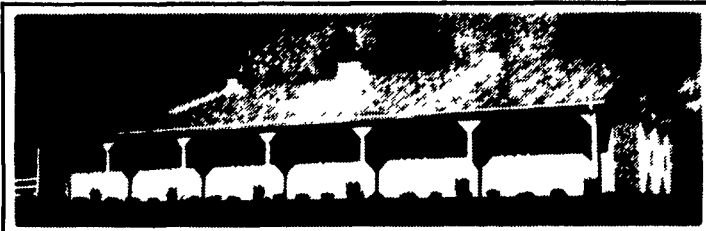
Field Representative  
Daniel Vosburg • New Holland, PA  
(717) 354-5562

## AGRI-INC.

Custom Built Farm Buildings  
Designed To Your Needs



### RIDING ARENA



### HORSE STALL BARN

Let Our Experience Work For You

- Dairy Complexes And Replacement Stock Facilities
- Horse Stall Barns And Riding Arenas
- Workshop And Machinery Storage Buildings
- Timber Column Buildings For Light Commercial



**AGRI-INC.** The Construction Professionals

151 E. Farmersville Rd., Ephrata, PA 17522

(717) 354-4271

Serving The Agricultural Industry For Over 25 Years



## Evergreen Tractor

41 S. Fairlane Ave. • Myerstown, PA 17067

717-272-4641 • 717-866-2585 • 1-800-441-4450

### TRACTORS:

Ford 9N.....\$2,275  
JD 300 Utility w/Fall Mower.....\$6,950  
JD 4020 Synoro, Narrow Front, Nice.....\$8,950  
JD 1020 Gas w/37 Loader and Direction Reverser.....\$7,850  
Hyster Dual Wheel Pneumatic, 6,000 Lb. Fork Lift.....\$6,250  
JD 4230 Fender Tractor, Turbo, 20.8x30 Tires.....\$16,500

### COMBINES & PICKERS:

White 8900 Combine 4WD w/15' Grain Head and 706N 6 Row Corn Head and Chopper.....\$23,500 Make Offer  
6620 Side Hill, turbo hydro, heater & air, monitor, spreader.  
JD #343 3 Row 30" Corn Head.....\$3,850  
JD 653 6 Row 30" Bean Head.....\$2,450  
JD 13' Quick Tach Rigid Grain Head.....\$1,850  
JD 444 4 Row Wide Corn Head.....\$3,850  
JD 213 Rigid Head For Side Hill.....\$2,850  
MF 410 Gas Combine w/Platform And 4 Row Wide, Nice  
JD 4400 Del. Combine, New Engine  
JD 4400 Del. '78 Model, Big Tires, Auto Header Heights, Fresh Out Of '94 Corn.....\$5,950  
JD 7700 Turbo Hydro, 4 Whl. Drive, 30.5x32, 14.9x28, '78 Model, Hyd. Latch, Chopper D.A.M. Sharp.....\$17,500  
JD 213 Flex Head.....\$3,850  
JD 643 Hi-Tin Corn Head.....\$6,450

### HAY & FORAGE EQUIPMENT:

IH 51 Forage Wagon w/Gear.....\$1,850  
JD 1 Row, Row Crop Attachment, Nice.....\$550  
JD 5 1/2' Pickup Attachment  
NH 1010 Bale Wagon.....\$4,350  
NH 268 Baler w/Ejector  
JD #30 Hydraulic Bale Ejector.....\$1,500  
Hesston 1091 Mower Conditioner.....\$2,950  
NH 495 12' Haybine.....\$4,850  
JD 3 Row Row Crop Atch. 30" For Harvester.....\$4,450  
IH 430 Baler w/Thrower  
JD 35 Harvester With Pickup.....\$425  
Hesston PT 10 Haybine.....\$950  
JD 2 Row 30" Row Crop Atch. For Harvester  
JD 3950 Harvester, Sharp  
Hesston 1014 12' Hydro Swing Mower Conditioner.....\$4,250  
Wooden Bale Body w/Gear.....\$855  
JD 35 Harvester, 840 PTO w/1 Row Row Crop.....\$1,550  
JD 25A Fall Mower, Nice.....\$1,275  
NH 450 3 Point Mower.....\$950  
9' Grimm Hay Tedder  
NH 822 2 Row Narrow Wide Corn Head, Rotary Knife, Sharp.....\$950

### DISCS AND FIELD CULTIVATORS

Lely 15' Roterra Power Harrow.....\$3,950  
JD 210 14' Black Gang Disc.....\$3,850  
JD 16' Field Finisher.....\$1,450  
18' Wing Fold Field Cultivator S-Tines.....\$950  
JD 235 27' Wing Fold Disc.....\$6,500  
JD 4 Row RM Cultivator.....\$1,050  
Taylorway 20' Hyd. Fold (narrow) Field Cultivator, Tine Harrow.....\$2,450  
JD KBA 28 Disc Wheel Carrier.....\$625  
JD AW 10' Disc.....\$850  
IH 12' Heavy Duty Field Cultivator w/Buster Bar.....\$950

### ROLLER HARROWS AND CULTIMULCHERS

#### Coming In...

Case 1835B Skid Steer Diesel  
JD 8630 30.5x32 12' Leon Blade 3 pt. PTO Low Hours  
JD 443 4 Row 30" Corn Head  
Bobcat 444 Skid Steer Loader  
JD 675B Skid Steer Loader w/Backhoe, Nice

### CULTIPACKERS

Brillion 12' w/Big Shaft.....\$1,250  
Brillion 12' Packer w/Transport.....\$1,850  
JD 10' Packer.....\$ 750  
JD 14' Packer w/Transport.....\$1,750

### PLOWS-MOLDBOARD AND CHISEL:

IH #55 11 Tooth Pull Type Chisel.....\$1,850  
IH 9 Tooth 3 Pt. Chisel.....\$1,850  
JD 7B 2500 Plow.....\$3,950  
JD 1450 6-16" Semi-Mtd. Plow.....\$2,250  
JD 1B Roll-Over Plow.....\$1,250  
IH 9 Tooth Pull Type Chisel.....\$1,850  
JD 3200 6x16" Pull Type Auto Reset Plow.....\$3,950  
Arway 12 Ft. 3 Pt. Chisel.....\$1,850  
JD 5B Semi-Mtd. Roll-Over Plow.....\$4,850  
JD 2700 5x18" Auto Reset Plow.....\$4,500  
JD 2500 5x16" Auto Reset On-Land Plow.....\$2,950  
IH 710 4-16" Auto Reset Semi-Mtd. Plow.....\$ 2,450

### PLANTERS & GRAIN DRILLS:

JD 8300 21x7 DD Drill.....\$3,450  
JD 7000 6 Row Planter, Dry Fertilizer.....\$7,450  
JD 23x7 DD Drill w/Press Atch.....\$4,850  
JD 11 Row 18" Bean Planter.....\$1,575  
6 Each 7000 Planter Units.....Each \$575  
IH 800 4 Row Plate Planter, Dry Fert. Monitor.....\$4,250  
JD 18x7 DD Drill w/Grass.....\$1,750

### ROW CROP CULTIVATORS & ROTARY HOES

JD 6 Row RM Cultivator.....\$1,250  
JD 4 Row RM Cultivator.....\$1,050  
JD Ft. Mtd. 4 Row Old Style Cultivator.....\$450

### MISCELLANEOUS:

JD 16.9x34 Direct Axle Duals w/New Tires.....\$1,200  
Transcraft 42' Drop Deck Trailer, Air Ride, Nice.....\$8,500  
Several Electric Golf Carts With Chargers.....Each \$750  
3 Pt. Box Scraper.....\$625  
7' Rhino Heavy Duty Blade.....\$975  
Century 200 Gal. Mtd. Sprayer, 40' Boom, Hyd. Pump.....\$1,250  
4 Wheel Gas Golf Carts.....Starting At \$875  
500 Gal. Poly Nurse Tank w/Trailer And Gas Engine.....\$575  
JD 1210A Grain Cart **SOLD**.....\$4,250

### USED SKID STEER LOADERS: & ATTACHMENTS

Ford 340C Skid Steer Loader.....\$5,850

### USED PARTS FOR THE FOLLOWING MACHINES: 1-800-441-4450

- 2500, 2600, 2700 & 2800 Plows
- F350 Hydraulic Reset Plows
- Cultivator Parts
- Grain Drills
- Trip Plows
- Disc Harrows
- Cultipackers and Roller Harrows (John Deere and Brillion)
- 35 and 3800 Harvesters
- Grain Platform
- Combine Corn Head

We Ship UPS Daily

This is a partial listing. Please call for availability even if your machine is not listed.

We Ship UPS Daily

### Store Hours

PARTS- Mon. Thru Fri. 7:30 A.M. To 4:30 P.M.

Sat. 8:00 A.M. To Noon

SERVICE- Mon. Thru Fri. 8:00 A.M. To 4:30 P.M.



bobcat