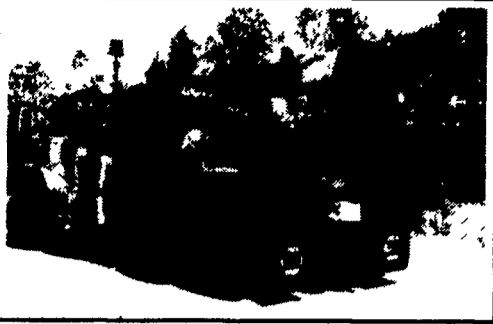


**6x6 I.H.C. WRECKER CRANE**



All Hydraulic Telescopic Boom 180 Degree Swing Front and Rear Winches, Out-Riggers, Excellent Condition, Road Ready.

**Only \$21,500.**

Call Code(814)843-1018.

Saint Marys, Pa 15857

**R & R CAR AND TRUCK CENTER**

1657 Rohrerstown Road, Lancaster, PA



(5) 45' Road/Storage Van Trailers Available Priced to Sell

**1985 Ford LN8000**  
Cab & Chassis, 3208 Cat, 5&2 Speed, PS, AB, 32,800 GVW, 222" WB, 168" CA, Insp. Clean Unit  
Call For Details



**1979 IHC S-1954**  
DT466, 210HP, 5&2 Speed, Power Steer, Air Brakes, 28" Cab & Chassis  
Call For Details



(14' Platform Dump Body — \$3,000)

Call Ray Leed 717-560-4901

**PINE TREE MOTORS**

Rt. 322 & Clearview Road, Clay 717-738-2242

92 Dodge Grand Caravan SE, V6, AT, AC	\$10,800
90 Chevy Lumina APV, V6 AT AC	\$6,900
90 Chevy Astro CS, V6, AT, AC	\$9,800
90 Chevy Lumina APV Cargo Van	\$7,900
89 Ford F-150 Custom 5 Spd	\$6,900
89 Chevy Astro CS, V6, AT, AC	\$7,900
88 Chevy Beauville Van, V8, AT	\$6,900
88 Dodge Caravan SE, V6 AT, AC	\$5,800
88 Dodge Ram, 350 Lb, V8, 12 Pass, Air	\$7,900
87 Ford Clubwagon XL, AT, 8 Pass	\$4,800
86 Chevy Astro CL, V6, Loaded	\$5,800
86 GMC Suburban SLE, V8, Loaded	\$5,800
86 Dodge Caravan Le, Auto, Air, 7 Pass	\$3,995
86 Dodge 250 Royal, V8, AT, 5 Pass	\$4,800
84 Ford Bronco II, 4x4, V6, AT	\$5,800
84 Dodge Caravan Se, Auto, 7 Pass	\$2,995
83 Chevy Beauville Van, AT, AC	\$2,900
82 Chevy S-10 PU TK, 5 Spd	\$2,500

**TOUGH ENOUGH**



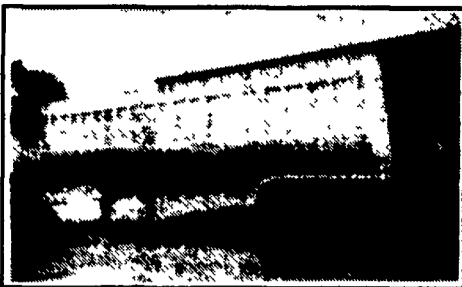
... ..  
... ..  
... ..  
... ..

**PARTS - PLOWS - SPREADERS IN STOCK**

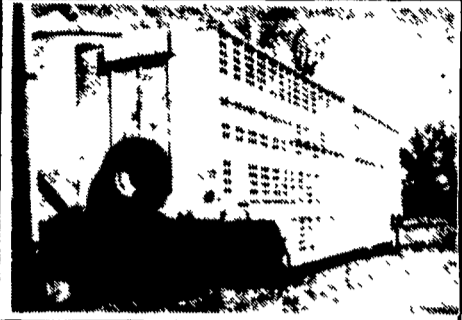
**E.M. KUTZ, INC.**

**610-775-3528**

SNOWPLOWS



**1985 Fruehauf 33'/35'**  
New Brakes and Drums \$12,500



**1976 Merrit 48' Double Deck Pot**  
Extra Nice for Year \$9,000  
Also 1981 Barrett 46' Double Deck Pot \$4,750

Winchester, VA.

Call - (703) 662-0057 - Day  
(703) 888-3706 - Night

**TRUCKS**

- '92 F350 STAKE DUMP V-8, 5 Spd., 16,000 Miles
- '93 F150 SUPER CAB XLT 5.0L, A/C, A/OD, Power Equipment
- '93 CHEVY 3500 S/CAB 4x4 6.5L Turbo Diesel, A/C & More
- '92 F250 HD 4x4 XLT A/C, 460 V-8, A/OD
- '91 RANGER STX S/CAB 4X4 V-6, A/C, 5 Spd.
- '91 F150 4x4 XLT 4.9L, A/C, A/OD, 37,000 MILES
- '93 RANGER XL, 4X2 2.3L, 5 Spd, 12,000 Miles
- '92 DAKOTA SUPER CAB LE PKG., V-6, A/C, A/OD
- '87 MAZDA B2000 SUPER CAB 5 Spd., A/C
- '93 F350 CREW CAB XLT 4X4 7.3L Diesel A/OD, A/C

**CARS**

- '92 CHRYSLER NEW YORKER 6 Cyl., A/C
- '89 DODGE DAYTONA Shelby, A/C, A.T. & More
- '92 CHEVY Z-24 V6, A/OD, A/C
- '93 TAURUS GL SW 3.0 L, A/OD, A/C, 11,000 Miles
- '92 TAURUS L SW V-6, A/OD, A/C, 35,000 Miles
- '92 GRAND AM A/C, AT, 25,000 Miles
- '85 LINCOLN TOWN CAR Loaded, Only 55,000 Miles
- '91 MERCURY CAPRI Convertible, A/C, 5 Spd., 1-Owner
- '92 GRAND MARQUIS LS 4.6L, A/OC, A/C, 1-Owner
- '93 COUGAR XR7 V6, A/OD, A/C

**MPV'S**

- '94 GRAND CHEROKEE LAREDO Power Equipment
- '93 GRAND WAGONER Loaded, 20,000 Miles
- '89 JEEP CHEROKEE 4 DR 4.0L, A/OD, A/C
- '92 WRANGLER SAHARA 4.0L, 5 Spd., A/C, Soft Top
- '90 WRANGLER A/C, 4.0L, 5 Spd., Hard Top
- '94 AEROSTAR XLT All Wheel drive, X-Length, Dual A/C
- '94 EXPLORER 4 DR XLT A/C, A/OD, 1 Owner, 22,000 Miles
- '91 EXPLORER 2 DR Eddie Bauer, Loaded
- '91 PLYMOUTH VOYAGER A/C, AT, 1-Owner, 88,000 Miles
- '92 WRANGLER ISLANDER 4.0L, A/C, 5 Spd.

**ENGLE-RISSINGER AUTO GROUP**

Rt. 147 Just North of Halifax Halifax, PA 17032  
The Call's On Us 1-800-242-8075  
1-717-896-3421

1974 International 4070A Cabover, 318-Detroit, 13 Speed, Wetline, Good Tires, Good Shape. \$2000 OBO. (717)524-0249.

1976 International w/hyd. unloading webb, beaters in front w/cross conveyor. 717-529-2051.

1977 GMC 6500 series, 5+2, 366 gas, good condition, 14' flat, \$2000. 410-836-1795.

1985 GMC Heavy 2500 4X4 Auto 6.2 Diesel AC 116,000 Mi., Nice \$6750. (717)838-5965.

1973 International 1700 series, 18' van, fiberglass cab, pull out ramp and trailer hitch, \$1700 OBO. 410-969-3620; 410-969-7518.

1973 Mack DM tri-axle, long wheelbase, 6 speed trans, 237, 44 rears; 1980 Mack MR, 237, 5 speed, 44 rears, long wheelbase; 1972 Mack DM tri-axle dump truck, 237, 6-speed, 44 rears; 1975 International roolback w/cab, diesel. Many different parts for Mack trucks. 215-286-5172; 717-354-8946.

1980 Chevrolet C-50, 292, 4-speed, 12' grain body w/ fitted tarp, 85% rubber, iron paint, very sharp, asking \$6000. 908-852-4699.

1969 Mack R model 237, 5spd tandem, good condition, inspected w/25 ton gooseneck trailer, \$6,000. After 6pm, (610)593-7045.

1974 Diamond Rio dump truck, single axle, 238, 10spd RR, \$3,500. After 6pm, (610)593-7045.

1974 Ford L750, 1160 CAT diesel, 13 speed O.D., air seat, good condition, \$5000 OBO. 610-273-9635.



**AUTO BODY & SALES**

1701 B Division Hwy New Holland, PA • 717-355-0614

**Specializing in Rebuilt Collision Damage Vehicles**



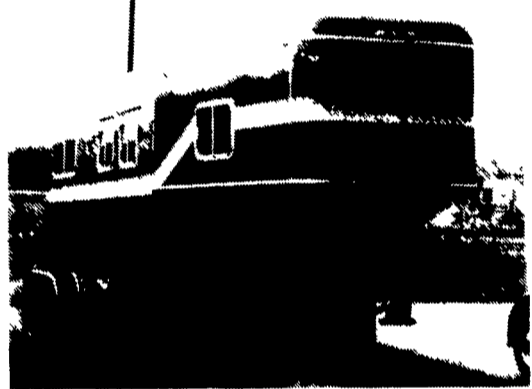
'91 Buick Skylark 2.5L, AT, PS, PB, AC, 33,000 Mi., Interior Fire On Drivers Seat, Needs Interior, Good Title \$2,800



'93 Ford F-150 XL 300, 5 Spd., Cass., 67,000 Miles, Left Front Damage, Factory Black \$4,800



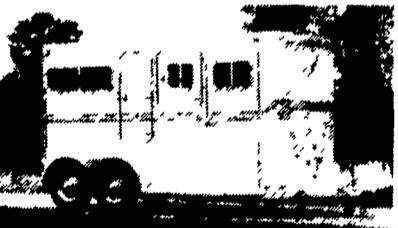
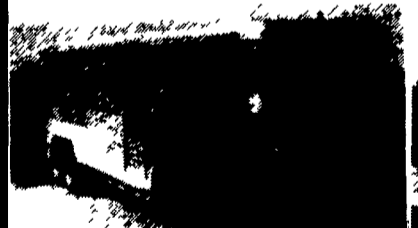
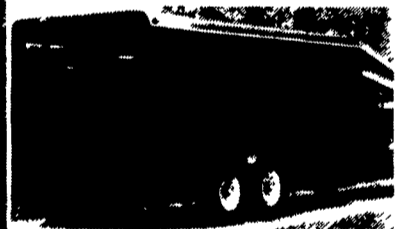
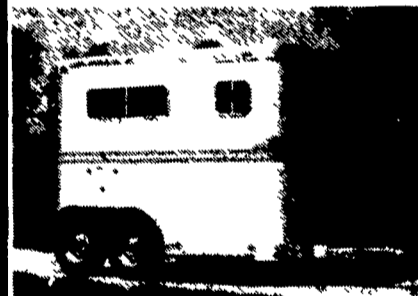
'94 Chevy S-10 CS, Extended Cab, 2 WD \$4,900



**TWO HORSE THOROUGHbred**

WITH DRESSING ROOM

**\$5,995**



**SNOWMOBILE TRAILERS**



2 & 4 Place Enclosed



Chevrolet • Oldsmobile • Geo

627-1220 or 859-7700

AT THE BROWNSTOWN EXIT OF RT. 222

4161 Oregon Pike Ephrata, PA 17522