



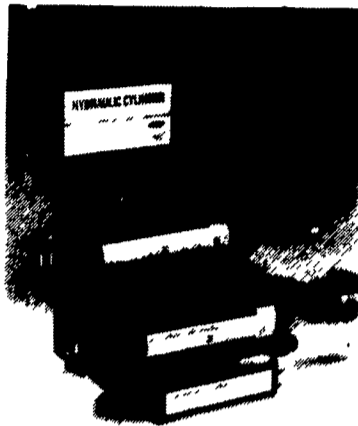
New Holland Can Meet Hydraulic Cylinder Requirements

NEW HOLLAND (Lancaster Co.) — If you're looking for top-quality, general purpose hydraulic cylinders with superior performance characteristics, there's only one place to shop — your local New Holland dealership.

New Holland hydraulic cylinders feature high tensile steel, zinc-plated pins and retainers to prevent corrosion. The heavy duty, torqued, self-locking piston nut holds the piston in place under high cycle loading. And the high strength, hard chrome-plated shaft provides extended cylinder life in the harshest conditions.

With a working pressure of 2,500 psi, these newly enhanced hydraulic cylinders are able to withstand continuous high loads without wear or fracture. The ductile iron piston is precision machined providing a malleable bearing surface for extended cylinder life.

New Holland cylinders are available in ASAE standard sizes as well as other popular sizes. For more information, contact your local New Holland dealership.



New Holland hydraulic cylinders feature high tensile steel, zinc-plated pins and retainers to prevent corrosion. The heavy duty, torqued, self-locking piston nut holds the piston in place under high cycle loading. And the high strength, hard chrome-plated shaft provides extended cylinder life in the harshest conditions.

PARS, Custom Farm Seed Honors Individuals

MOMENCE, Ill. — A PARS Inc. Custom Farm Seed dealer and several sales representatives were honored for excellence in customer sales and service at a recent sales kickoff meeting.

Titus Stoner of Landisville, Pa. was recently recognized as district dealer of the year by PARS Inc., a distributor of Custom Farm Seed (CFS) products. The district dealer of the year is the top CFS dealer award presented for excellence in sales and service. Stoner became a CFS dealer in 1988.

Chuck Keeney of Felton, Pa. was recognized for hybrid corn seed sales increase in the Pennsyl-

vania sales area during 1993-1994. Keeney became a CFS dealer in 1989.

Charles Bomgardner of Annville, Pa. was recognized for soybean seed sales increase in Pennsylvania area sales during 1993-1994. Bomgardner became a CFS dealer in 1989.

Dale Good of Newmanstown, Pa. was recognized for achieving top corn sales in the Pennsylvania area during 1993-1994. In addition, Good received awards for achieving the top soybean sales, top alfalfa sales, and alfalfa sales increase. Good became a CFS dealer in 1989.

CVC Hires Dairy Specialist

SHIPPENSBURG (Franklin Co.) — Cumberland Valley Cooperative (CVC) has announced the addition of Gerald (Gerry) Potter to its staff.

Potter is joining CVC as a dairy specialist and will be working in the Cumberland County area.

Potter brings a broad base of experience with him to CVC. Potter has been in the agriculture field since obtaining a bachelor's degree in agriculture business management from Penn State.

Potter started his experience in the feed business during college by doing local millwork and marketing studies with local livestock farmers. After college he started a management training program and became a plant manager in 1985. He also has experience as a feed division manager and most-recently as a feed sales specialist.



Gerald Potter

Deere Unveils 8000 Series Tractors

MOLINE, Ill. — Drawing on input from extensive customer and competitive-owner research and more than 70 years of experience in designing and manufacturing tractor, John Deere has developed four all-new 8000 Series tractor models, ranging from 160 to 225 PTO horsepower.

The John Deere 8000 series tractors include the 160-horsepower 8100, 180-horsepower 8200, and 200-horsepower 8300, which replace the 4560, 4760, and 4960 models in the product line. The largest model, the 225-horsepower 8400, provides the most PTO horsepower and hitch lift capacity of any row-crop tractor in the industry.

The tractors feature a John Deere-designed-and-manufactured powertrain. They use proven electronic technology to provide fingertip control of the transmission, SCVs, PTO, and hitch; precise engine performance; self-diagnostic capabilities; and complete compatibility with options such as row guidance and electrohydraulic depth



The John Deere 8000 Series tractors include the 160-hp 8100, 180-hp 8200, 200 hp 8300, and the 225-hp 8400. The tractors establish new standards in control, visibility, maneuverability, power, and ease of service in this size class.

control. The chassis design is so innovative and unique that it is patented. It enables these tractors, equipped with 16.9R-30 MFWD tires set at 60-inch spacing, to have a 17-foot turning radius—the shortest of any competitive tractor in this size class.

One of the most distinctive features of the tractors is the CommandARM that places the controls for the transmission, throttle, SCVs, hitch, and PTO in

the armrest of the seat for convenient fingertip operation. Effective use of reliable electronic technology, widely used in automotive and industrial applications for years, combined with the shape, placement, and color of the controls, provide a system that optimized operator comfort and ease of operation while minimizing hand and arm movements. The CommandARM moves with the seat when the operator makes adjustments or swivels it, so the controls are always at the operator's fingertips.

The secondary tractor controls and the vehicle monitor are located on the right-hand console, within easy view and reach of the operator. The monitor provides status information on machine systems and has the capability to display diagnostic codes directly to the operator—a first in John Deere tractors. The codes are explained in the operator's manual. Analog gauges monitor engine coolant temperature and fuel level. An oil pressure gauge is optional.

Scoop Up Savings With Loader Tooth Bars

NEW HOLLAND, (Lancaster Co.) — Get the most from your skid steer loader by installing new skid steer loader tooth bars from New Holland.

Installing a new New Holland tooth bar will help ensure your bucket's filled to capacity time after time. These new tooth bars feature extra-wide shanks for greater durability and reduced wear on the bucket lip, as well as replaceable bucket teeth with hardened points. The double-

beveled bar design helps keep material from getting stuck going into and out of the bucket.

The tooth bars are constructed from low-carbon steel for extra toughness which means they'll be able to loosen hard clay or compacted soil with ease. New Holland skid steer loader tooth bars come in seven sizes ranging from 54 to 84 inches to fit nearly every application. For more information, contact your local New Holland dealership.



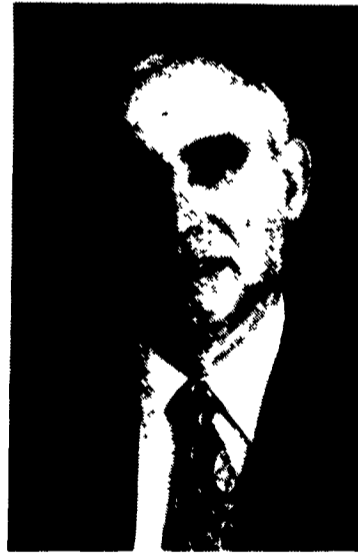
Get the most from your skid steer loader by installing new skid steer loader tooth bars from New Holland. These new tooth bars feature extra-wide shanks for greater durability and reduced wear on the bucket lip, as well as replaceable bucket teeth with hardened points.

Los Awarded Achievement Honor

WASHINGTON, D.C., — Dr. Marinus Los, Research Director, Crop Sciences Discovery at American Cyanamid, received the prestigious Industrial Research Institute Achievement Award recently at the institute's 1994 fall meeting in Williamsburg, Va.

Established in 1973, the award is presented to honor outstanding accomplishment in individual innovation and creativity which contributes broadly to the development of industry and to the benefit of society. Tangible recognition of the award is an original work of art, symbolizing the creative nature of scientific achievement, and expressing the flight of imagination in achieving technological innovation.

Los was chosen to receive the award for his leadership in developing more effective and safer herbicides; in particular for his discovery of a new class of herbicides which are potent inhibitors of a plant



Dr. Marinus Los

enzyme absent in mammals and for developing this class such that the derived commercial products require low application rates and possess extraordinary features for human safety.

J-Star Honors Goss

MACKINAC ISLAND, Mich. — Harold D. Goss was recently cited for his outstanding 1993 sales performance, territory management, and service to his dealers and customers as a J-Star industries territory manager. Goss' territory includes southwestern Pennsylvania and northeast Ohio.

As part of this recognition, Harold and Sondra Goss of Spring Mills, Pa. attended the company's Cup club meeting for outstanding territory managers at The Grand Hotel on Mackinac Island, Michigan.



Harold Goss, right, is pictured with his prestigious 1993 Cup Club Plaque presented by John Neill, president of J-Star Industries.

New Name For Crop Trade Association

WASHINGTON, D.C. — The National Agricultural Chemicals Association (NACA) has changed its name to the American Crop Protection Association (ACPA).

"ACPA's member companies are world leaders in existing and emerging agricultural technologies for today and the 21st Century. Our new name reinforces the continued central role of synthetic chemistry in agriculture and captures the potential of today's biological and bio-engineered products," said Jay J. Vroom, president, American Crop Protection Association.

"Crop protection is more than who we are, it is what we do. It connotes strength and health, and signifies our continued commitment to the miracle of American agriculture," said Vroom;

ACPA was founded in 1933 as the Agricultural Insecticide and Fungicide Association. In 1949, the name was changed to the National Agricultural Chemicals Association. With 80 members, ACPA represents more than 95 percent of the nation's manufacturers, formulators and distributors of insecticides, herbicides, fungicides and other products used to protect crops.