

Sale Reports

SCHROEDER ESTATE SALE estate and personal property was held October 29 for the estate of Jessie

Schroeder, near Hellam on Picking Road in York Co., Pa.

The 1 story white brick rancher with an attached garage was sold for \$58,500.

Other prices included: 1978 Chevette auto \$500, beer steins \$16 & \$25, wicker basket \$32.50, dinette set \$102.50, map holder \$30, Mobo horse \$185

Lancaster Farming, Saturday, November 5, 1994-B23

and 3 piece single bedroom suite \$135. Kenneth K. Keeny was the auctioneer.

WISSLER ESTATE SALE
A Public Sale of real estate was held October 29 for the estate of

Eugene R. Wissler at 371 Wissler Road, Earl Twp., Lanc. Co., Pa. The 1 1/2 story Holland stone ranch-style house with an attached 2-car garage and a wood garden shed was sold for \$145,000 to Mr. and Mrs. John Huber of New Holland, Pa.

A five-acre tract of mountain land between Ridge Avenue and Maple Street in Ephrata Borough and Ephrata Township was bought for \$33,500 by Leslie Groff of Ephrata, Pa.

The sale was conducted by T. Glenn, Timothy G. and Thomas A. Horst.

ZOOK SALE

A Public Auction of greenhouses and nursery was held October 28 by Joseph and Lena Mae Zook, 2 miles north of Millheim, Centre Co., Pa.

Some items sold were: greenhouse 26' x 48' \$2000, green house 37' x 96' \$2500, greenhouse 22' x 96' \$2300, heating pipes \$475 & \$275, back-pack power sprayer \$280, potted trees \$4 to \$45 each, shrubbery \$3 to \$12 each and peat moss \$5 to \$8 per bag.

Mark Glick was the auctioneer.

ESTATE AUCTION

94 Acre Franklin Co. Farm, 1 Acre Building Lot, Antiques & Household

Sat., Nov. 19, 1994

10:00 a.m.

Located along Pinola Rd. in South Hampton Township, Franklin Co., PA, 3 1/2 miles south of Shippensburg and 8 1/2 miles north of Chambersburg just off Rt. 11 (Molly Pitcher Highway) across from Mt. Rock Homes.

Franklin County Farm 12: Noon

94 Acre limestone farm erected thereon a 9 room, two story frame dwelling, large bank barn with limestone foundation, 2 car garage, wagon shed and more. Dwelling has 4 bedrooms, full bath, modern kitchen, drilled well, oil fired heating system, standard sewage and more.

Property offers 70 acres level limestone tillable farm ground, 24 acres grazing pasture and woodland and is fronted by Pinola Rd. A picture place located in the center of the Cumberland Valley for showing phone 717-532-6980.

South Hampton Township Building Lot 12:30 p.m.

Just less than 1 acre lot located on the corner of Molly Pitcher Highway and Pinola Rd. with municipal sewer and driveway permit.

Real Estate Terms: 10% down payment balance in 60 days.

Antiques & Collectibles starting at 10:00 a.m.

Estate of Joseph Kyle

Harold Kyle, Executor

Bryan D. Imes, Auctioneer

Phone 717-527-2449

AU-1656-L

ABSOLUTE AUCTION

SATURDAY, NOV. 12

AT 10 A.M.

Interchange Industrial Park - Newark, DE (off Rt. 95) (From South: Last MD exit) - (From north: 896 North exit)

Business reduction sale - DAG Signs will sell at Absolute Auction tools and equipment to include:

South Bend metal lathe, 4' bed, 3 jaw chuck; 8' Chicago sheet metal brake; Wilder slitter, 24" wide 16 gauge; Pexto 3' sheet metal shear; Ruoff notcher; Thakita portable cut off saw 14"; Craftsman 10" radial arm saw, 10"; Delta 16" band saw; Craftsman 24" scroll saw; Milwaukee Super Sawzall; Poulan 3400 chain saw; Lincoln SP 100 welder, steel or aluminum; Sprunger drill press, 15" depth, 1/2" chuck; Jet belt sander/grinder; vises; Hanson tap & die threading center; commercial 5 horse DeVilbiss compressor; Honda generator; Karcher commercial pressure washer 1000 psi; hand and electric tools; digital message center; video surveillance; postage machine; electric letter opener; NEC art printer; conveyor; metal cabinets; casters; gun case; block and fall; OSHA-approved ladders; assortment of fasteners; bins; woodworking vise; furniture clamps; moulding planes; corn sheller; office furniture; MGS 8x12 tilt trailer; 5' aluminum loading ramp; Craftsman roll box; misc. plastic and sheet metal sign material; blueprint machine.

'88 Ford F150 Custom 4WD, 5-speed, air, rebuilt front end. '86 T-Bird 5.0 V8.

ALSO to be offered: '78 Ford 8000, 636 Cat. motor, 45' boom truck, 7 1/2 T capacity w/air & hydraulic at bucket, 60,000 miles. '76 Chevy C65, 55' cherry picker, with chipper & dump body.

TERMS: Cash/Certified Funds

NO SALES TAX NO BUYER'S PREMIUM
NO RAIN DATE

John "JG" Green
AUCTIONEER
302-378-4722



AUCTION SALE

57 FUR COATS & JACKETS
CHILDREN'S SWEATERS & JEANS
SWEATSHIRTS, HAIR GOODS, SHOES
WORK GLOVES, LOCKSETS, HARDWARE

TUESDAY, NOVEMBER 8 - 10 AM
ON PREMISES

1825 E. BOSTON AVE., PHILA., PA

SALE FOR ACCOUNT OF UNDERWRITERS & OTHER ACCOUNTS
COMPRISING IN PART

SWEATERS, JEANS, SWEATSHIRTS, WALLPAPER

1600 Children's Sweaters, 3000 Children's Name Brand Jeans & Corduroys, 1500 Children's & Adult Sweatshirts, Children's Wrangler Jackets & Vests, 2000 Printed Tee Shirts, 200 Pns. Men's Dress Shoes, 10,000 Packaged Bows, hair Bands & Ponytail Holders, Tube Socks, 40 Bed Comforters, 1300 Rolls Wallpaper, Arctic Spring Water, Telephones, Elec. Toothbrushes, Artificial Flowers, Shampoo, Paper Plates, Bathroom Tissue, Drawstring Bags, latex Gloves, Decorator Plates, Rowing Exercisers, Wicker Baskets, Wood Wine Racks, Wood Picture Wall Plaques.

57 FUR COATS & JACKETS

Trustee Sale in Bankruptcy Case No 93-10145/JHW, James J. Cain, Trustee; Debtor: New York Fur Factory, Inc., 57 New & Used fur Coats & jackets comprising of Rabbit, Mink, Fox, Beaver, Leather, Seal, Cashmere, Raccoon and Lynx

WORK GLOVES, LOCKSETS, TOOLS, HARDWARE

2500 Pns. Leather & cotton work Gloves, 400 Iron Snaps, 275 Ratchet Screwdrivers, 300 Shelf Brackets, Shelf Supports, 400 Brick Trowels, Abrasive Discs, Levels, Screening, hinges, Rope Clips, Eye Bolts, Screw Hooks, U-Bolts, Utility Knives, Dog Chain, Door Stops, Fasteners, Brass Pulls, Cabinet Hinges, Drill Bits, 500 Kwikset & Schlage Entrance & Privacy Locksets, Double Loop Chain, Adhesive, Tie Guns, Door Handles, Corner Braces, Nails, Screen Door Sets, Strap Hinges, Door Bolts, Sheet Metal Screws, Machine Bolts, Cam Bolts, Door Closures, Street Brooms.

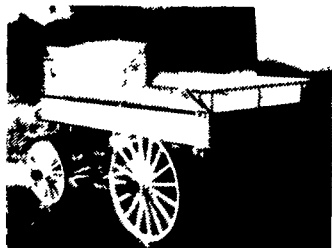
INSPECTION: MONDAY, NOVEMBER 7 - 9AM-4PM
TERMS: Cash or Certified Check - 25% Deposit Required
(Minimum \$100.00)

COMLY Auctioneers
WM F COMLY & SON, INC.

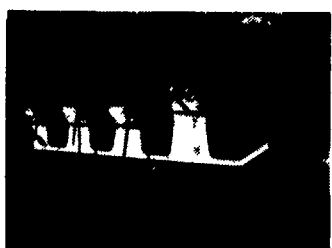
1825 East Boston Avenue
Philadelphia, PA 19125
(215) 634-2500 FAX (215) 634-0496
PA Auctioneers
License No. RY000087-L

LEBANON, PENNSYLVANIA

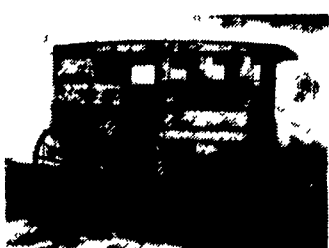
MARTIN'S FALL AUCTION OF CARRIAGES, SLEIGHS & ANTIQUES



One of Sev. Hitch Wagons,
Pony & Horse Sizes



Multi-Pass
Bob Sleigh



Milk Delivery Wagon



Pony Size Trolley



Life Size Budweiser Horse

FRIDAY, NOV. 18TH & SATURDAY, NOV. 19TH
LEBANON AREA FAIRGROUNDS
2 Miles South of Lebanon, PA

NO THURSDAY SALE - FIELD SESSION TO BE HELD ON FRIDAY

TENTATIVE AUCTION SCHEDULE:

FRIDAY - FIELD SESSION - 9:00 AM - Approx. 100 horse drawn carriages, wagons & sleighs, h.d. farm machinery; carriage & wagon parts; riding & driving equipment; all types of misc. horse related items, antiques & collectibles. It will be a large session with at least three auctioneers selling all day.

FRIDAY - UNDER ROOF - 7:00 PM - Coaching & driving accessories; Eng. & Western Saddles & Bridles. Sets of New & Used harness, All Sizes; Harness Parts; Carriage Lamps; & many Other Good Quality items Too Numerous To Mention.

SATURDAY - UNDER ROOF - 9:00 AM - Antique Baby Carriages, Miniature Horse & Pony Sleighs & Wagons, Life-Size Fiberglass Horses; Flatbed & Horse Trailers, Etc.

SATURDAY - ABOUT 10:00 AM - Approx. 190 CATALOGED carriages, Coaches &

Sleighs, including: Hearse, Omnibuses; Delivery Wagons, Medicine Wagon, restored; Other commercial Wagons; Sev. Vis-A-Vis; Village Carts; Road & Jog Carts; Landaus; Competition, Marathon & Cross Country Vehicles; Sleighs of all types and descriptions; Dr's Buggys, Runabouts; Farm Wagons, etc. Lots of Good Merchandise will be sold throughout the two days. *Plan to come early and stay late.*

Receiving times for consignments;

Week of sale only - starting Tues., Nov. 15 from Noon to 6 p.m. Wed., Nov. 16 & Thurs., Nov. 17 from 9 a.m. to 6 p.m., Friday, Nov. 18 - 8 a.m. until start of Auction.

TERMS: CASH, TRAVELERS CHECKS OR CERTIFIED CHECKS, US FUNDS ONLY. PERSONAL OR BUSINESS CHECKS ACCEPTED ONLY WITH A CURRENT BANK LETTER OF GUARANTEED PAYMENT TO MARTIN AUCTIONEERS, INC. and presented at time of registering for a buyer's number. **PREREGISTER BY CALLING OUR OFFICE ANY WEEKDAY (717) 768-8108.** All items must be paid before or immediately following the auction on **SATURDAY, NOVEMBER 19, 1994.** ALL ITEMS MUST BE REMOVED FROM LEBANON AREA FAIRGROUNDS BY 2 P.M. On Sunday, November 20th. **NO EXCEPTIONS!!** Martin's will accommodate storage for items not removed by November 20, 1994 at owner's expense.



MARTIN AUCTIONEERS, INC.
"The Greatest Name In Carriage Auctions"

Larry L. Martin, Paul Z. Martin, Jr.,
Roger Spencer, Patrick Morgan &
Larry L. Martin, Jr.