

**Used Tractor**  
 Case IH 7220 MFD, 530 Hrs -  
 Like New!  
 Case IH 2294 w/Cab and #90  
 Loader  
 IH 986 w/Cab - Good Condition!

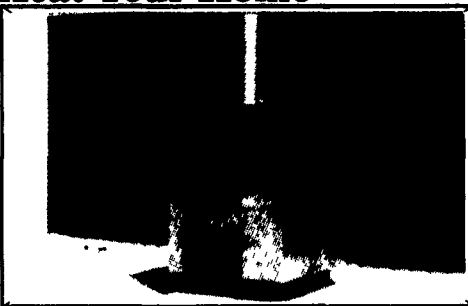
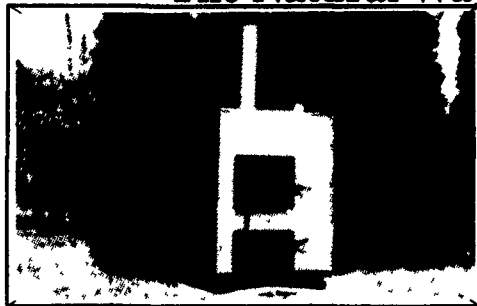
**M.J.  
 SHEFFER, INC.**  
 FARM AND HOME CENTER

121 Railroad St.  
 Hanover, PA 17331  
 (717) 637-3808



**JD 300**  
**3 RN Corn Picker,**  
**Nice**  
**(717) 733-4516**

**MAHONING OUTDOOR FURNACES**  
 "The Natural Way to Heat Your Home"



Efficiency Rating 83% to 85% - Cut Emissions by 90%

Cut Your Heating Costs With Our Outdoor Furnace!

3 Year Warranty Except Electrical Components (1 Year) — 35 Years Heating Experience  
 PROUDLY BUILT IN CLEARFIELD COUNTY, PENNSYLVANIA

**SIX SIZES:**

Model 100S	both supply up to 100,000 BTU's per hour	100MF	24 inch long fire box
Model 200S	both supply up to 200,000 BTU's per hour	200MF	36 inch long fire box
Model 300S	both supply up to 300,000 BTU's per hour	300MF	48 inch long fire box
Model 400S	both supply up to 400,000 BTU's per hour	400MF	60 inch long fire box
Model 500S	both supply up to 500,000 BTU's per hour	500MF	60 inch long fire box
Model 1-millionS	both supply up to 1,000,000 BTU's per hour	1-millionMF	60 inch long fire boxes

Models and specifications subject to change without notice.

FUEL USED IN  
 STANDARD UNIT:  
 WOOD & COAL &  
 WOOD BY-PRODUCTS  
 (SAWDUST, PAPER, ETC.)  
 FUEL USED IN  
 MULTI-FUEL MODEL:  
 SAME AS ABOVE  
 INCLUDING OIL, PROPANE,  
 NATURAL GAS

**TODAY'S MAHONING OUTDOOR FURNACE WILL HEAT YOUR HOME, BARN,  
 POOL, BUSINESS, GREENHOUSE, & DOMESTIC DRINKING WATER TOO!**  
**WE CAN CUSTOMIZE A UNIT TO FIT YOUR PERSONAL NEEDS!**

Safe • Efficient • Durable

Look at what makes the Mahoning Outdoor Furnace a great purchase...

**CLEAN.** All dirt, dust, fuel and fire is outside. No chance of chimney fire or flue fire.

**ELIMINATES AIR POLLUTION IN THE HOME.** Smoke, fuel odors and other causes of allergies are outside the home.

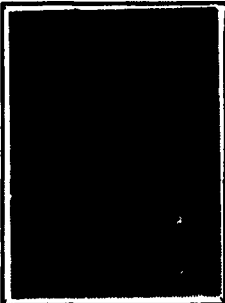
**SAFE FOR MOBILE HOMES.** Eliminates danger that other furnaces contained in a mobile home can cause.

**NO DANGER OR EXPLOSION.** This is a zero pressure furnace.

**ENCLOSED COMPONENTS.** The circulation pumps and electrical connections are enclosed in an insulated cabinet on the back of the Mahoning Outdoor Furnace.

**ADAPTABLE.** Install our furnace in any forced air heating or hot water system.

All Mahoning  
 Units Come  
 Installed with  
 Grates  
 Including An  
 External  
 Shaker Handle



★ The only outdoor furnace made with a Catalytic Combustor. ★

Mahoning Catalytic Combustor Will Help in the Following Ways:

1. Burn one cord of wood which equals 166 gallons of oil.
2. Your fuel source becomes enormous inexhaustible and poses few risks to public safety.
3. Over all efficiency of 85%, which means the heat no longer goes up the chimney!
4. You get more heat from a log compared to the non-cat furnace.
5. More burn time - less reloading time!
6. Zap 90% of pollutants, made from fire source.
7. Saves you a lot of money!
8. User friendly, emits no smoke!



All Mahoning  
 Multi-Fuels  
 Can Burn  
 Coal,  
 Wood, Oil,  
 Propane,  
 Natural Gas

Proudly Built in Clearfield County, Pennsylvania

**MAHONING MANUFACTURING**

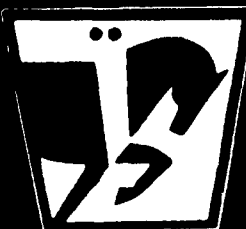
**Mahoning Outdoor Furnace Co.**

RD 1, Box 250, Mahaffey, PA 15757

**(814) 277-6675 - (814) 277-6675 Dealer Inquiries Welcome**

- Call Your Local Dealer Today and Find Out How Mahoning Can Save You Dollars.-

- |   |  |   |  |
|---|--|---|--|
| Signor Bros<br>Arnot, PA<br>717-638-2985  | Douglas Fishel, Jr.<br>Gettysburg, PA<br>717-334-2475                      | Clarks Heating Service<br>Ligonier, PA 15658<br>412-238-5122    | Dave Scott<br>Orbisonia, PA 17243<br>814-447-5459  |
| Stan Wenzel<br>Barre, PA 16615<br>814-888-4558  | Dave Saunders<br>Gillett, PA 16925<br>717-598-2383<br>New York Distributor | William Stehl<br>Loyville, PA 17047<br>717-789-3244             | Tim Stairs<br>Somerset, PA 15501<br>814-443-4195   |
| Gary Schoenly<br>Birdsboro, PA<br>610-888-5230  | GLENSIDE LAWN & GARDEN<br>Glenside, PA 19038<br>215-888-6430               | Whitney Plumbing & Heating<br>Lucinda, PA 16235<br>814-226-4389 | Merrill Stains<br>Three Springs, PA 17264<br>814-448-3647  |
| Sleepyhead Power Equipment<br>Brookville, PA 15825<br>814-849-3200                          | Roger Hartle<br>Grove City, PA 16127<br>412-458-6645                       | McNamara Heating<br>Meadowville, PA 16238<br>814-724-6718       | Tony Liller<br>Cumberland, MD 21502<br>301-777-9696  |
| James Deltch<br>Carlisle, PA<br>714-488-3805  | Kevin Hoffman<br>Hadley, PA 16130<br>814-786-8362                          | George Duncan<br>Millville, PA 17046<br>717-458-4837            | Bill Lantz<br>Aurora, West Virginia 26705<br>304-735-6835  |
| Charles Heating<br>Clearfield, PA 16830<br>814-766-8833                                     | Vince Salvato<br>Jeffersonville, NY<br>914-887-8377                        | Clyde Alderfer<br>Mt. Pleasant Mills<br>717-539-8485            | Walter Simmons<br>Brandywine, WV 26802<br>304-248-5206   |
| Clarks Plumbing & Heating<br>Clearfield, PA 16835<br>814-784-5716                           | Snow Garden Shop (Dean Snow)<br>Karns City, PA 16041<br>412-448-2786       | Mike Hollenshead<br>Needmore, PA 17238<br>717-485-4939          | B&B Mowers & Mahoning<br>Outdoor Furnaces<br>Virginia & Northern<br>W Virginia Distributor<br>800-982-7603 |
| Odin Tree Farm (Harry Fox)<br>Coudersport, PA 16915<br>814-847-8764<br>New York Distributor | Charles Bowman<br>Lebanon, PA 17046<br>717-273-8332                        | Henry Kinsinger<br>Oakland, Maryland 21550<br>301-334-8810      | Frank Kurcias<br>Ohio Distributor<br>1-800-518-HEAT  |



**WISCONSIN  
 HEAVY DUTY  
 ENGINES**

Serving The Community Since 1971

Wis.-Robin, Kawasaki, Kohler, Briggs & Stratton, Tecumseh, Honda

Rockford and Twin Disc Clutch Parts & Accessories

**WISCONSIN REPLACEMENT ENGINES** New & Rebuilt Short Blocks

Special Purchase V465D 65  
 HP Wisconsin, Electric  
 Start w/Alternator, Ideal for  
 Grinders, Large power Units,  
 Reg. List \$4,836  
**ONLY \$2,885 (While They  
 Last)**  
 • W2-1250, 30HP,  
 electric start.....\$1595  
 • Special Prices on  
 30HP VH4 crank start  
 engines No Tank.....\$1,945

Authorized  
 Service  
 Center

• Complete Rebuilding  
 • Large Parts Inventory

**F I S H E R  
 E N G I N E  
 S E R V I C E**

3141 Old Philadelphia Pk. • Bird-In-Hand, PA 17505  
 For Service Calls, Call Nelson Martin  
 717-768-3729

**J&L EQUIPMENT HAS SOLD THE BUSINESS OF  
 GATES • FREESTALLS • HEADLOCKS TO:  
 MARTIN'S FARM SUPPLY**



**HEADLOCKS**  
 1 1/4 OD Pipe  
 Sched 40 Pipe  
 3 Sizes  
 Adjustable  
 Quick Release

**FREESTALLS**  
 2 1/4 OD Pipe  
 Sched 40 Pipe  
 Several Styles  
 4 Bolt 1/4" Clamp  
 Painted & Galvanized  
 Brisket Board Bracket

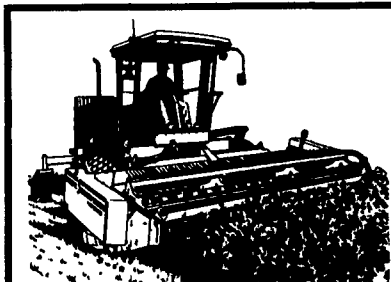
**GATES**  
 5 & 6 Bars  
 48" High  
 1 1/2" & 1" Pipe  
 1 1/2" & 3/4" Pipe  
 Sched. 40 Pipe  
 Strap Hinges  
 Spring Latches

**Fence Panels • Slanted Bar Panels  
 All Headlocks, Gates & Panels made  
 to fit your measurements**

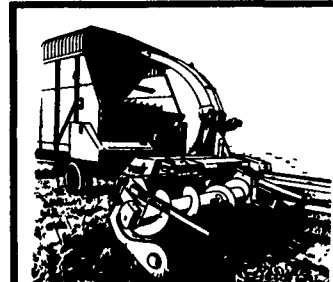
**Martin's Farm Supply**

Call: St. Thomas, Pa. 717-369-5702  
 7 Miles West of Chamberburg, Pa.

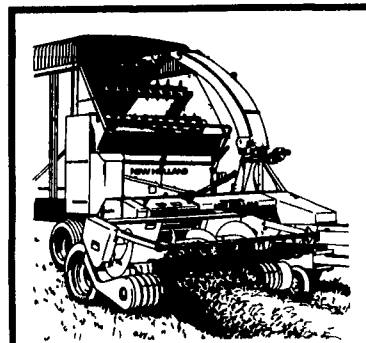
**Baseball may be done for '94, but  
 We're Still Ready To Play Ball!**



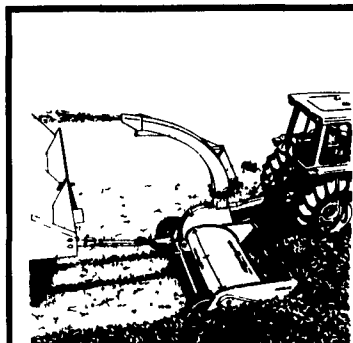
**NH 2450 S.P. WINDROWER**  
 14 Ft. Header  
**WOW! \$40,500**



**NH 790 HARVESTER**  
 w/Metalert II  
**LOOK! \$14,600** Base Unit



**NH 900 HARVESTER**  
 w/Metalert  
**Base Unit \$19,000**



**NH 38 CROP CHOPPER**  
**ONLY \$6,450**

**Tractors and Many More Items In Stock!**



FOR YOUR CONVENIENCE,  
 NOW CALL TOLL-FREE  
**1-800-869-9029**

**S.G. LEWIS & SONS, INC.**

N. Jennersville Rd.,  
 West Grove, PA 19390  
**(610) 869-2214**  
**(610) 869-9440**

