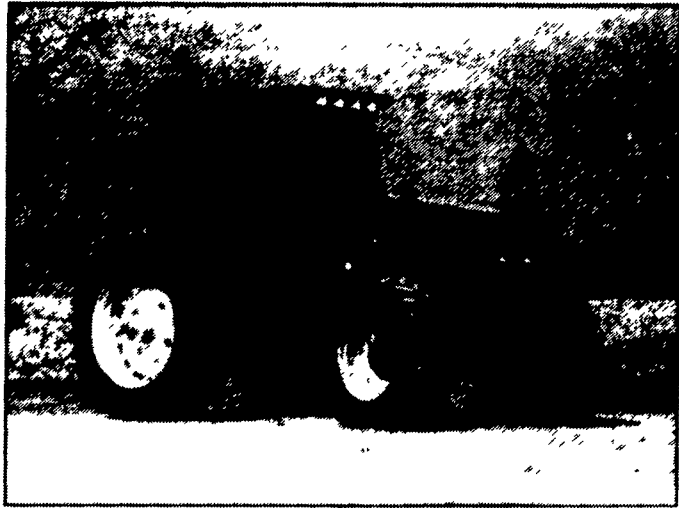


For The Way You Farm Today

Fingertip Powershift Control, Improved Field Visibility and The Most Comfortable Cab Ever



Model 9650
147 PTO HP (109.7 kW)
In Stock Ready For Delivery

With their new 18x9 speed full powershift transmissions that electronically control the engagement of massive gears with just the tap of a hand... their cab-forward design that permits a clear, unobstructed view of the field in all directions... and their roomy, comfortable cabs, that feature a unique swivel, air-ride seat and an exclusive seat-mounted control console, the new 9600 Series tractors are clearly ahead of the time.

Every component — from the sleek, sloping hood, to the rugged, cast-iron mainframe to the world-proven air-cooled diesel engines, that require less maintenance — has been designed to match the way you farm today. The result is greater comfort, better performance and improved productivity.

Compare the features and specifications for yourself. Better yet, stop by BHM Farm Equipment soon and try out the 9650 model for yourself. You have to drive it to believe it.

BHM FARM & LAWN EQUIP.

SALES - PARTS - SERVICE
 Route 984 - 2 Miles North of Allentown, PA
 Telephone 717-867-2211

LAWN & GARDEN



RECONDITIONED COMBINES

JD Financing Available - Interest Free Till Sept. 1, 1995

NEW JD 9500.....	In Stock
JD 9500, like new, low hrs.	
'85 JD 6620 Sidehill Titan II, excellent.....	\$46,500
'84 JD 6620 Sidehill, excellent.....	\$38,000
'75 JD 7700, 2,900 hrs., good.....	\$15,000
'78 JD 6600 Sidehill, good.....	\$18,500
'79 JD 4400, dsl., 2,163 hrs., allr, good.....	\$16,500 \$15,500
'74 JD 4400, dsl., 2,025 hrs., good.....	\$12,500
'73 JD 4400, gas, good.....	\$ 7,500
Gleaner L, good w/platform.....	\$ 8,000 \$ 7,000
Gleaner K, good w/platform.....	\$ 4,500 \$ 4,000
NI 329 Sheller SOLD	\$ 2,500
NI 324 2 row picker.....	\$ 2,800

COMBINE HEADS

JD 920 flex platform, excellent.....	\$ 8,800
JD 915 flex platform, excellent.....	\$ 7,800
JD 643 corn head.....	\$11,000
JD 244 corn head.....	\$ 1,500
MF & AC corn heads, 4R & 6R	

JD 7020, 145 hp.....	\$14,500
JD 5020, 145 hp.....	\$10,500
JD 2355 w/loader.....	\$17,500
JD 2520, good.....	\$ 7,500
JD 520, very good.....	\$ 3,900
JD 90 skid steer.....	\$ 4,500
JD 1018 rotary cutter, 1 yr. old.....	\$ 4,900
Gehl 1540 blower	
NI 486 round baler	

NI 868 Harvester, grass head, 774N corn head, excellent condition for Uni System..... ~~\$12,000~~ \$10,500

1-800-241-2161

LOST CREEK IMPLEMENT

Rt. 35 Oakland Mills, PA 17076
 Between Mifflintown & McAlisterville
 717-463-2161



Best Buys in Used Equipment

USED EQUIPMENT

- | | |
|---|---|
| MF 1155 tractor w/cab, 18.4x34 tires, 2,400 hrs. | Taylor-Way 3 pt. 13' chisel plow |
| Farmall Super C w/fast hitch | Taylor-Way 13' offset disc w/cushion gangs, very good |
| 500 gallon tow type sprayer, 26' boom, roller pump | IH 183 4 row cultivator |
| Demco 200 gallon 3 pt. sprayer w/26' boom, nice | NH 68 baler w/50 thrower, good condition |
| 6 ton running gear | Glenco 12' pull-type field cultivator |
| (1) NH 489 mower conditioner | IH 456 4R Cornplanter, dry fertilizer w/insecticide |
| Brillion 16' transport harrow | 18.4x34 snap on duals |
| Woods M5 Dixie 5' rotary cutter | Unverferth Model 230, 190 bu. gravity box |
| JD 3 btm. pull type plow w/coulters, coverboard & cylinders | |

Unverferth gravity boxes in stock

We Ship Parts UPS Daily

BANGOR IMPLEMENT

6 Flicksville Rd., Bangor, PA 18013
 610-588-5922 or 610-588-5924



USED TRACTORS

TAG#	DESCRIPTION	HOURS
	Ford 3000 w/Loader	
	Ford 5030 2WD 8x2 Trans.	
8898	Ford 5000 diesel dual power	2067
8866	Ford 4000 Gas SOS	231
8833	Ford 7600 8x6 Trans w/Dunham-Lehr Loader	
8825	Ford 801 Diesel 5 Speed	2012
8822	Ford 8N	
8820	Ford 4630 2WD AP Cab	396
8805	Ford 6610 2WD w/Sun Roof 2 Remotes	3174
8803	Fordson Major Diesel	
8802	Ford Jubilee Gas	
8758	Ford 3930 2WD 8x2	69.7
8735	Ford 5030 2WD	110
8636	IH-H Tricycle	
8593	Ford 8240 SLE 4WD Cab, Exc	1021
8550	Ford 9N	
8517	Ford 6610 w/Tiger Boom Mower	
8464	AC 6080 4 Cyl 2WD Turbo w/Cab	3412
8450	Ford 9600 w/Canopy & ROPS Dual Power	7989
8423	IH 656 w/Wide Front T/A	
8269	Ford NAA w/5' Sickle Bar Mower	
8237	Ford 3000 Gas 8 Speed 1969 Model	3482
8212	Ford 8N	
7924	Ford 4630 2WD w/Cab 16x8 Trans, Exc. 60	

HAYBINES

8840	NH 469 Haybine	
8817	JD 1209 Haybine	
8808	NH 489 Haybine	
8752	NH 1495 SP Haybine Gas Stick	
8747	NH 489 Haybine w/Hyd. Lift Cyl. (Ex. Cond.)	
8733	NH 489 Haybine	
8723	NH 489 Haybine	
8712	NH 477 Haybine	
8709	NH 469 Haybine	
8697	NH 1496T SP Haybine Diesel w/10' Head	
8677	NH 479 Haybine	
8626	NH 499 Haybine Pivot Tongue	
8616	NI 290 Haybine 9'	
8159	NH 489 Haybine	

COMPACT DIESELS

8921	Ford 1910 4WD w/ROPS, exc cond	317
8909	Satoh Gas w/Master 60" Deck	1710
8834	Ford 1920 4WD Ag w/Loader & Backhoe	507
8502	Ford 1300 2WD	363

BALERS & RAKES & WAGONS

8853	Massey Harris NH 26 Hay Rake	
8893	NH 630 Round Baler	
8813	H&S 8'x18' Hay Body w/Running Gear	
8799	Ford 532 Baler w/Chute	
8749	NH 316 Baler w/75 Kicker	
8744	NH 254 3 Pt. Tedder	
8743	Ford 530 Baler w/Thrower	
8718	NH 258 Hay Rake w/Rubber Teeth	
8711	NH 320 Baler w/Kicker	
8707	Deutz-Fahr KH300 2 Star Tedder	
8704	Fahr FH40 Hay Tedder 4 Star Pull Type	
8691	NH 256 Hay Rake	
8689	JD Running Gear	
8648	Ferguson 3 Pt. Hay Rake	
8594	IH 35 Rake w/Rubber Teeth	
8560	MF 25 3 Pt. Hay Rake PTO Drive	
8556	IH 35 Rake w/Rubber Teeth	
8533	NH 275 Baler w/Thrower, Nice	
7579	Ford 532 Baler w/Thrower	

INDUSTRIAL & SKID LOADERS

8969	Ford 555A 2WD ROPS, TLB	3500
8053	Ford 555B 2WD w/Cab TLB	1961
8838	Ford 555B TLB 2WD w/Cab, Nice	2164
8837	NH L555 Skid Loader	2910
8815	Toyota SDK-7 Skid Loader w/Backhoe Att.	311
8798	Ford 550 TLB Cab 2WD	
8595	JD 675 Skid Loader w/Yanmar Engine	2244

HARVESTER & FORAGE

8900	Badger Harvester Box w/Tandem Gear	
8881	Calhoun 620 Harvester box w/gear	
8859	NH 782 Harvester 1000 RPM w/2 Row Corn Head	
8845	Fox Direct Cut Grass Head	
8844	IH 315 Mulcher Pack 14' w/Transport Wheels	
8832	NH 770W Grass Head	
8824	Unverferth McCurdy Gravity Box	
8821	Fox IF 546 Harvester w/2 Row Corn Head	
8819	Papec Silage Blower	
8812	NH 14 running gear w/gravity box	
8810	Papec Forage wagon w/Papec gear	
8789	Badger TA54 Silage Blower	
8782	NH 770 Harvester, 540 PTO	
8775	NH 717R2 2 Row Corn Head Wide	
8770	NH 717S Direct Cut Grass Head	
8706	Gehl 95 Gnrder Mixer	
8688	NH 770 Harvester, 540 RPM	
8686	Killbros Gravity Box Hyd. Drive Auger Att	
8675	NH 770W Grass Head F/770	
8670	NH 770R2 Corn Head	
8667	NH 770W Grass Head	
8664	NH 770 Harvester	
8440	New Idea 323 1 Row Corn Picker	

CHARLES S. SNYDER, INC.

RR 3, BOX 109
 1 MILE EAST OF RT. 309 ON RT. 443
 TAMAQUA, PA. 18252 PHONE: 717-386-5945

MON. THRU FRI. 8:00 A.M. TO 5:00 P.M.;

FAX 717-386-4080

SAT. 8:00 A.M. TO 12:00

EVENING HOURS BY APPOINTMENT



NEW HOLLAND



NEW HOLLAND

SHIP PARTS UPS DAILY