

York County Cattle Feeder Elected Beef Council Chairman

HARRISBURG (Dauphin Co.) — Wayne "Mike" Hoffman, a cattle feeder from Dover, York County, was recently elected chairman of the Pennsylvania Beef Council at the board's recent reorganization meeting. Hoffman had previously served as the Beef Council's vice chairman and trea-

sure, and replaces J. Elrose Glick, whose term as chairman expired. Dennis Snyder, a veal producer from Westfield, Tioga County, was elected vice chairman. Snyder had previously served as second vice chairman of the board, Bill McCoy, a representative from Lancaster Stockyards, Lancaster

County, was elected council secretary. McCoy previously served as treasurer of the board. Bob Gabel, a dairy farmer from Newport, Perry County, was elected treasurer of the board.

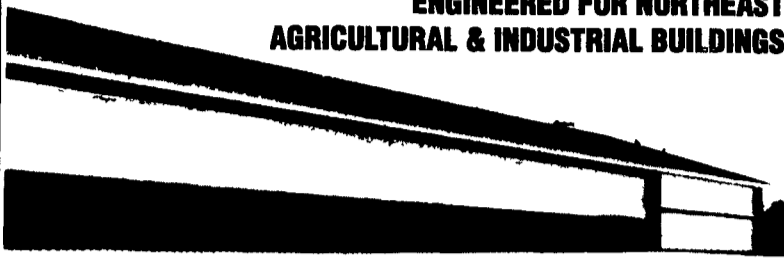
Also at the board's reorganization meeting, six new directors were elected to the board to

replace producers whose terms had expired. From the western region, Jerome Carl, a beef producer from Somerset County and Randy Meabon, a dairy producer from Erie County were newly elected to the board. Additionally, Sidney Troutman, a beef producer and processor from Snyder Coun-

ty, and Diana Hoopes, a dairy producer from Chester County were elected as new board member representatives from the central and eastern regions, respectfully, Bill Weist, of Leesport Farmers Auction in Berks County, was elected as a new auction market representative, and Ollie Weiss.

"Quality Curtain Systems"

ENGINEERED FOR NORTHEAST AGRICULTURAL & INDUSTRIAL BUILDINGS



Featuring...



Automatic Curtain Controllers

Our quality components offer benefits and value unmatched by other systems.

- * Suspension systems are heavy duty, yet economically priced. All primary & secondary pulleys have lifetime warranty. Galvanized aircraft cable 7x19 used on all suspension lines.
- * Fabric materials are proven to withstand extreme weather conditions of the northeast. Choices include insulated R3 or R4, un-insulated 13 oz. vinyl or un-insulated transparent polyethylene with 10x10 nylon scrim.
- * Double hem pipe is thick wall EMT 1.02 O.D. (No coupler req.)
- * Lift line anchors are made of 11 ga. galvanized steel.
- * Framed high grade polygrid or galvanized welded wire provides a smooth surface for system to operate with less fabric wear.
- * Conventional System openings available from 3' to 8' height.
- * Roll up divider system openings available up to 16' heights.
- * Fully Automatic electric winch thermostat controlled or top quality two speed manual winch.



"CALL TODAY FOR THE DEALER NEAREST YOU"

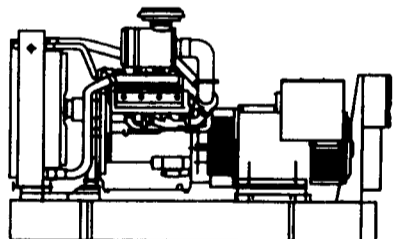
All components available separately and are stocked in our Auburn, N.Y. warehouse

EMPIRE AGRI-SYSTEMS, INC.

315-253-3256 • Grant Ave., Auburn, N.Y. • FAX 315-252-2108

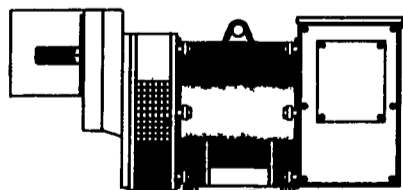
GENERATOR SYSTEMS

1-800-779-8809



New & Used 5 to 2500 KW Diesel • Propane • Natural Gas

24 Hour Emergency Service
Sales - Installation
Maintenance Contracts • Rentals



10 To 150 KW 1800 RPM Brushless Tractor Driven Generators



DYNA-TECH INDUSTRIES

602 E. Evergreen Rd., Lebanon, PA 17042

717-274-8899 Fax 274-5334

Ask About Our Lightning & Surge Protection Units
Panel Mount • Plug-In • Electric Fence Protection

BUY, SELL, TRADE OR RENT THROUGH THE CLASSIFIED ADS

PHONE: 717-626-1164 or 717-394-3047

FAX 717-733-6058

Mon., Tues., Wed., Fri. 8 AM to 5 PM; Thurs. 7 AM to 5 PM

1 FARM EQUIPMENT

11hp Lombardini diesel w/ starter, good condition, \$1500. Sam F Stoltzfus, 903A Vintage Road, Christiana, PA 17509.

1, 2, 3 & 4R Flail Choppers, NEW; also choppers for rent. Summit Hill Welding, 94 Summit Hill Dr., Strasburg, PA 17579, 717/687-8266 8-8:15am.

12' Farmhand Flail Stalk Chopper, good condition, \$295. 717/733-6333.

(1)3000 & (1)9000 Gal. SS nitrogen storage tanks. 703/639-2262, after 8pm 703/382-0570.

1665 Martin Scavenger spreader, \$5000, 14.9x26 duals for UniSystem, \$400; 73 F100 pickup, \$500 717/272-0041

18x60 silo \$2,500 w/Patz loader \$2,500. 150' belt feeder, \$2,500. 150' of concrete "H" bunks. Call (304)538-7294

1936 JD B, parting out, various good parts for sale. Brand new 11.2-38 tires w/ wheels; good block, etc. Al 610-847-2638

1947 John Deere A, Ford 8N 717-336-2497 after 4PM

1948 Farmall M, Good Shape, \$1400 OBO New Castle Co, DE (302)653-9065

1954 Farmall Super M w/ live hyd., real nice, \$2795; NI #323 1R corn picker, like new, \$3000; Athens 10-tooth 3pt chisel plow w/ wheels, \$1075 610/562-4464.

1958 Chev. Viking 60 12' Stake Body Dump 21,000 GVW, 6 Cyl. Engine, 4 Spd Trans, 2 Spd. Axle, Recent Inspection \$1500. (215)256-1128.

1977 7700 hydro, about 2,700 hrs., kept inside, thru our shop. Trade, Finance. \$10,800. Larry Stalter "The Combine Man" 1-800-248-2151

1980 Cat 518 Cable Log Skidder, 23.1.26 rubber, runs good, asking \$19,000. 717/768-8647.

1981 Deere 443, oil drive, corn header, only 400 hrs. use. \$5,950 Call Stephen 717-249-2317

1982 1460 combine w/820 15' flex, reverser, 2600 hours, excellent condition, \$28,500; 943 4RN corn head, \$3900. 717/627-7381.

1985 Kubota, 4x4, 430 hrs., excellent condition, 48" angle blade, 48" mower deck, \$6500. 717-274-5619.

1992 Gehl 4610 skid loader, 1200 hrs., good condition, \$9000 OBO. Will deliver 100 miles. 717-942-6933.

(1) set steel tractor wheels, 56"hx16"wx32" center open centers, rebar style, front wheels, 10"Wx30"H, excellent condition. Union County. (717)523-6261.

(1) set steel tractor wheels, 70"Hx34" center, 16"W, open centers, good condition Union County (717)523-6261

2100 Better Bilt Vacuum Manure Spreader, Tandem Axle w/Plow Down, \$2900; Rollover 4 Bottom JD Plow, \$1000 (717)665-6226.

25KW PTO generator on wheels, \$2000 410/398-8766.

(2) Adj. rims, 4 front wheel hubs, 4 hoods, 30 Ferg., 1 grille, 4 sides for grille, 1 crankshaft, 1 cylinder head, 4 connecting rods, 4 fenders, 2 compl. steering boxes, 2 wheels 6:00-16, 2 wheels 4:00-19, 1 compl steering box, 1 distributor TE-20, 1 starter, 1 generator, 2 flywheels, 1 pressure plate, 1 camshaft, 1 timing gear, 1 oil pan, 2 rear axles TE20, 1 carburetor MS, 1 rear TE20, 4 front spindles, 2 complete transmissions, 6 drag links, 1 radion, MF12V, 1 tractor jack, 3 front axles, HL \$800 703-854-6542

(2) gravity wagons w/JD gears, \$950 and \$1,200 Dillsburg (717)432-8587

(2) MM combines MM 4296, 2 heads wide corn, 13' grain \$1500, MM 3496 w/12' grain head \$1000 Machines have always been housed and are in good shape. Roger Lamb 717-596-3248 Ulster, PA

350 Utility Loader Backhoe, 4-cyl. gas, power steering, 5 speed, runs & works very good, \$4900 717/836-2609

(3) Wagon running gears, VG to excellent condition, 2 6-ton Dunham Lehr, Grove 8-ton w/adj hitch, 11L15 8-ply tires. 717/776-6540.

5', 3pt rotary mower, \$250, JD transport disc, \$300; NH 461 haybine, \$250. 717-484-2254.

55 hp. White diesel, completely rebuilt, w/clutch reduction, guaranteed to work, \$2700 OBO. KIRKWOOD REPAIR 717-529-3299 8-8:30AM

6' 40' transport PTO auger; 8' electric portable auger. 717/677-7282

701 Uni system w/727 husker, 725 end, 3RN, field ready 717-355-9620.

705 NI Uni power unit, 710 combine, 725 3R corn-head, 713 grainhead. Very good field ready condition, \$6000. 717/463-3216.

'78 7700, turbo, hydro, hydraulic latch auger, wide spread chopper, big tires, E H C, clean, \$12,900. Trade & Finance. Call Stephen 717-249-2317

7' Fox forage head, \$2,450. 7' Deere, \$2,450. Adapter to put picker head on Deere, \$1,250. Call Stephen 717-249-2317

843 Bobcat skid loader, good condition, \$8700 Cumberland Co 717-776-7725.

AC A430 corn head fits F-2 Gleaner, very good condition. (717)789-4433.

AC plow 416, semi-mounted, \$350. (301)898-7426

Adapter plate for ear corn on JD choppers, \$1,250 Call Stephen 717-249-2317

Agway Bedding Chopper. Very Good Condition. \$500, JD 420 Crawler Loader, \$3000 (717)733-1302

Allis Chalmers HD5, crawler loader, diesel, good condition, \$4,800 OBO (410)287-9030

BACKHOE BUCKETS, ONLY 4 LEFT, new, fits Ford/Bradco hoes & NH Generals, \$225 410-833-9091

BACKHOE FORD 650, cab, E-hoe, municipality owned, jaw bucket, nice, \$9,500. 410-833-9091

BACKHOE JD 401A, gas, 1 owner, very nice, \$6,850. 410-833-9091

BATWING MOWER TERRAIN KING, 10' fold-up, solid tires, good condition, \$1,000 410-833-9091

Backhoe attachment, 3pt hitch, Howard (Woods) powerarm, \$2500, 3pt hitch posthole digger, like new, \$600, towbehind grass seeder w/3hp B&S engine \$250 201-893-9053

Badger 14' silo unloader, \$1200, NI 325 2R sheller, needs 1 roller, \$700, 15'x15' round corn crib, dismantled, like new, \$700 716-593-1658 N.Y.

BELTING We specialize in flat belting, cut to order, baler throwers, self unloading wagons, long table blower belts Franklin Co 717-263-0573 NO Sunday calls

Brillion 12' cultimulcher. NH 717-770-900 pickup attachments. 717-665-4743.

Brillion 12' transport culti-packer, 4" axle, \$800 (301)898-7426

Bush Hog 10' pull-type rotary mowers, \$3695. Taneystown Farm Equipment 410/751-1500.

CARTNER Industrial Flail Mowers, 88" 3Pt. Hitch, 74" Side Mounted, All Hyd. Driven. Excellent Condition (410)836-1924

CASE SC, new rubber, LPTO, outlet, tri-cycle, runs excellent, \$1,000 410-833-9091

CASE TRACTORS: 500 diesel (industrial) 2 model LS \$1100 each both run. RC in parts, nice or will part out \$550; CC rough \$450; IH 660, 560, 650, 600, WD9, all diesels. Farmall M, runs nice \$1250; McCormick 15-30 runs, nice \$1000 Tractor repairs. Sales and Service. Reasonable Rates KING'S TRACTORS, 1426 Noble Rd., Kirkwood, PA 17536.

CAT 963, EROPS, narrow gauge, needs UC, \$29,000 410-833-9091

Cardinal Sprayer w/35' Booms, New \$2495. Taneystown Farm Equipment. (410)751-1500.

Case tractor, VAO 5256922, belt pulley drive, wheel weights, PTO, hydraulic lift, plus utility trailer w/lights (717)755-6391

CIH 550 spreader, 220 bushel, single beater, tailgate, excellent condition, \$4300. 717-328-2336.

Combine 510 MF diesel, 12' grain head, hyd lift hume reel, used for small grain only, always in shed, \$3000 717/445-4090

Combine Head, White 704 Wide, 13' Soybean, Kwick Cut, Nice (717)569-8925

Combine, John Deere 45 with cab, grain head, 2 row corn head, good operating condition, \$2500 Hunterton County 609-397-3571

Combine JD 3300, 12' Grain Head, Field Ready \$4950, JD 4400 Diesel, Air, Monitors, Nice, \$8900, AC F430 Black Corn Head, \$5500 (717)630-2736

Corn Planter, 494A JD, 4R, like new fertilizer boxes, \$500 610-374-7772

Cornplanters 2 and 3 row with John Deere Max-Emerge II units Plateless or vacuum 3-Point or pull type JD 7000 corn planters, parts, & overhauled Liquid and dry fertilizer attachment custom installed on planters, cultivators, etc Pequea Planter, 561 White Horse Rd., Gap, PA 17527 Lancaster Co 1 1/2 miles north of Gap on Rt 897

CRAWLER DOZER CASE 450, 6 way w/new chain, \$8,250 410-833-9091

DEUTZ 5506, 55 h.p., new rubber, runs well, needs paint, \$3,500 410-833-9091

Deere 6600, gas, very good, 15' Hinniker bar, chopper, shedded, \$6,375 Call Stephen 717-249-2317

Diller Manure Tankers. Pull type or truck mounted We buy, sell, trade, and rebuild at a fraction of new cost. Call (800)523-8002 or (717)369-2691 today Franklin County

Dismantling for Parts Hundreds of farm tractors new and old several JD 2 cylinders also dozers and track loaders. Call for any part you might need. Atkins Tractor Salvage. Union WV 24983 Phone 304-772-3741

DISMANTLING FOR PARTS 4-108 Perkins and Ford 3 Cyl. 201 Cid. Diesel Engines, S650G Satoh and 155 Yanmar Tractor; L553 New Holland and 342, 330, 440, Mustang Skidloaders; New and Used Parts for Kubota and Wisconsin Engines, Complete Repairs on Skidloaders Including Hydrostatic GD Equipment (717)859-3533.

Dunham bin wagon, \$975, Farmec bin wagon, \$725; Farmall 200 w/fast hitch, \$1675, MC 8' drag disc, \$350. 610/562-4464.

Elevator 30' good, \$300; power unit Ford industrial engine, good shape, runs nice & quiet, good for rotor beater or hammer mill. 717/626-0177.